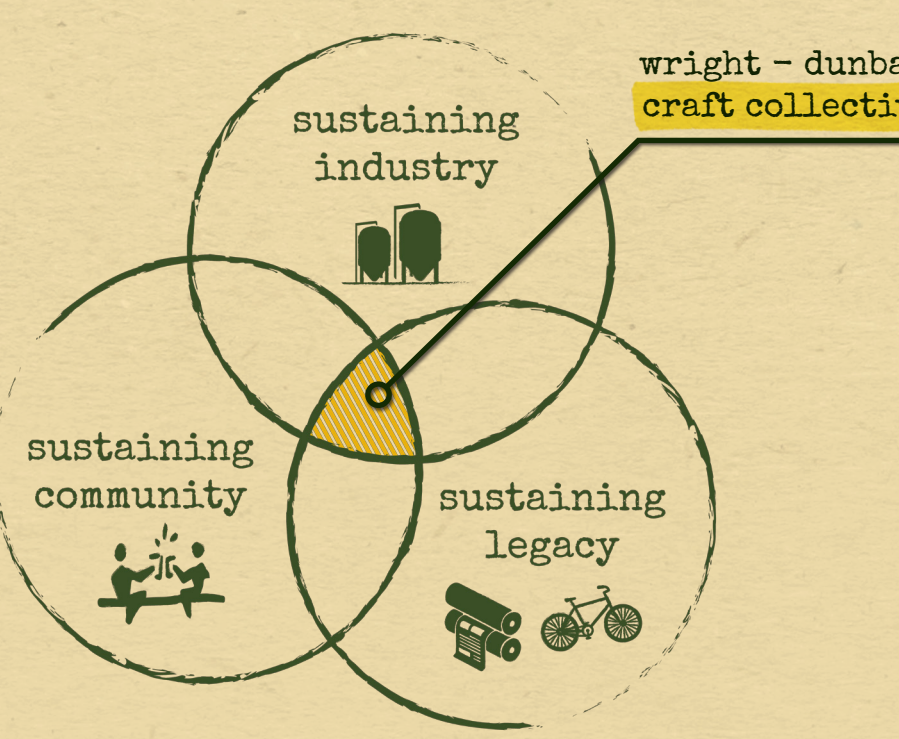


CREATIVE REHABILITATION CAN SUPPORT HISTORIC DISTRICTS BY:



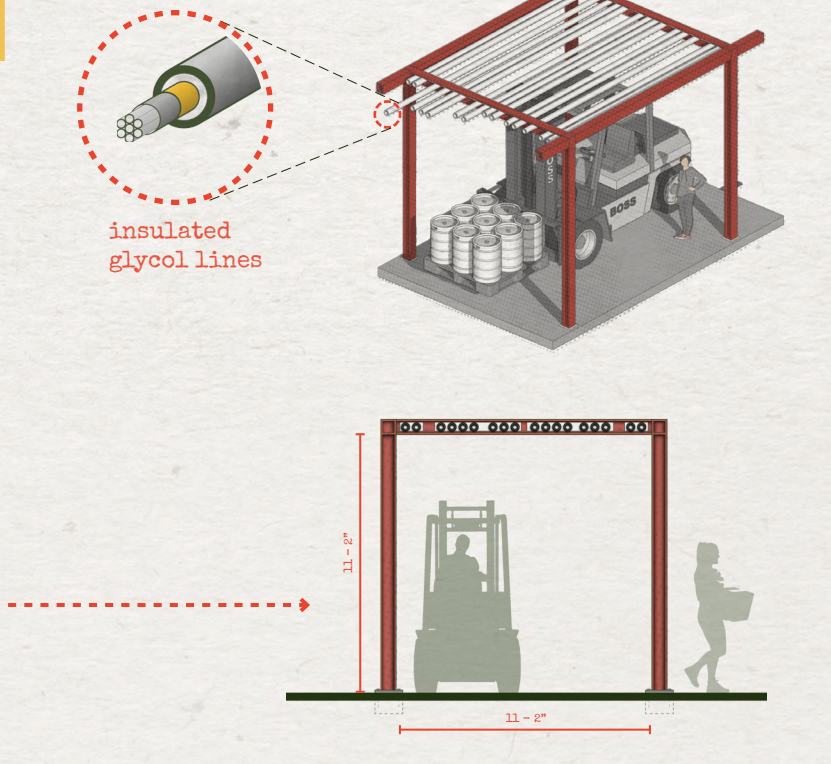
WRIGHT-DUNBAR VILLAGE DAYTON, OHIO



south elevation @ third street scale 1/4" = 1'-0"

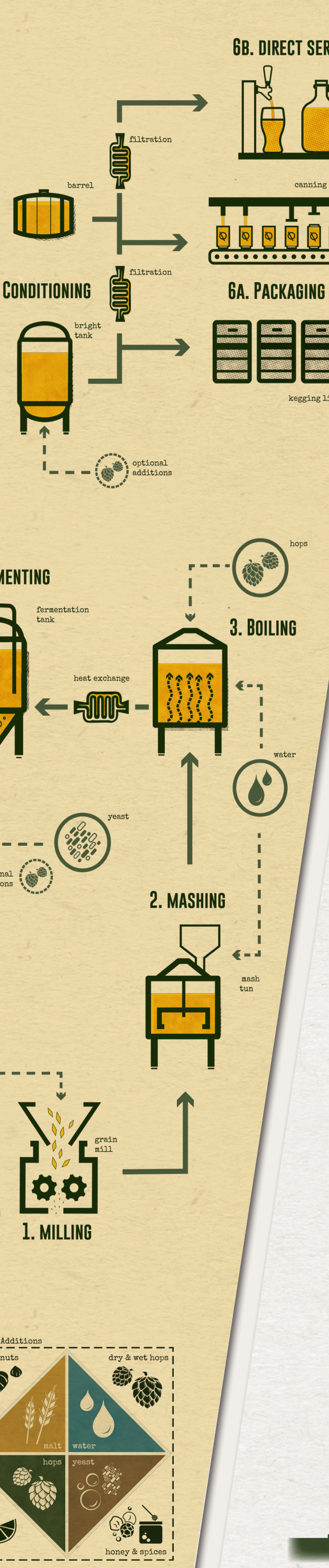


spine pergola detail water / ground / fire suppression data

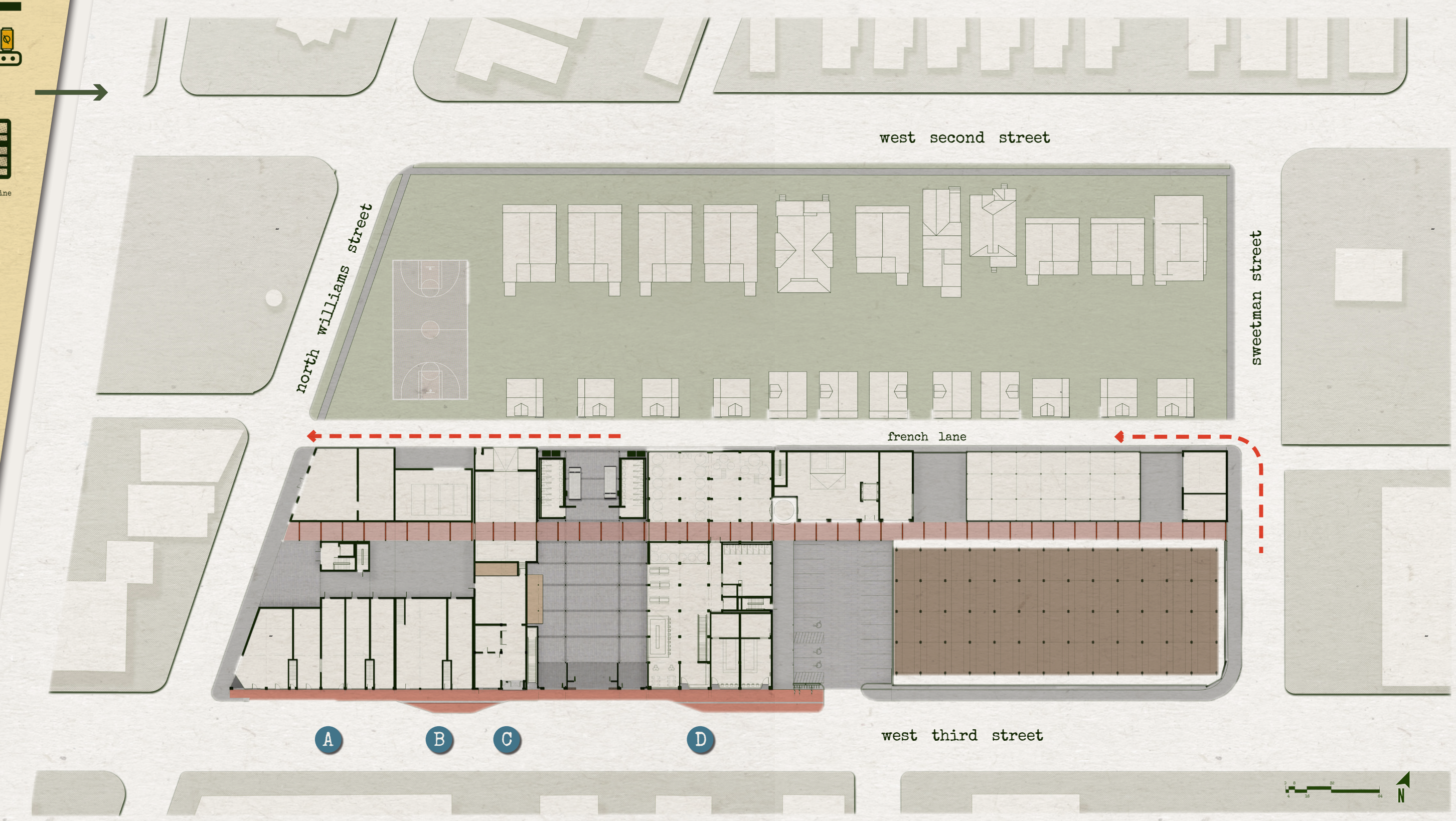


GREEN BEER | preserving dayton's industrial legacy through sustainable brewing practices

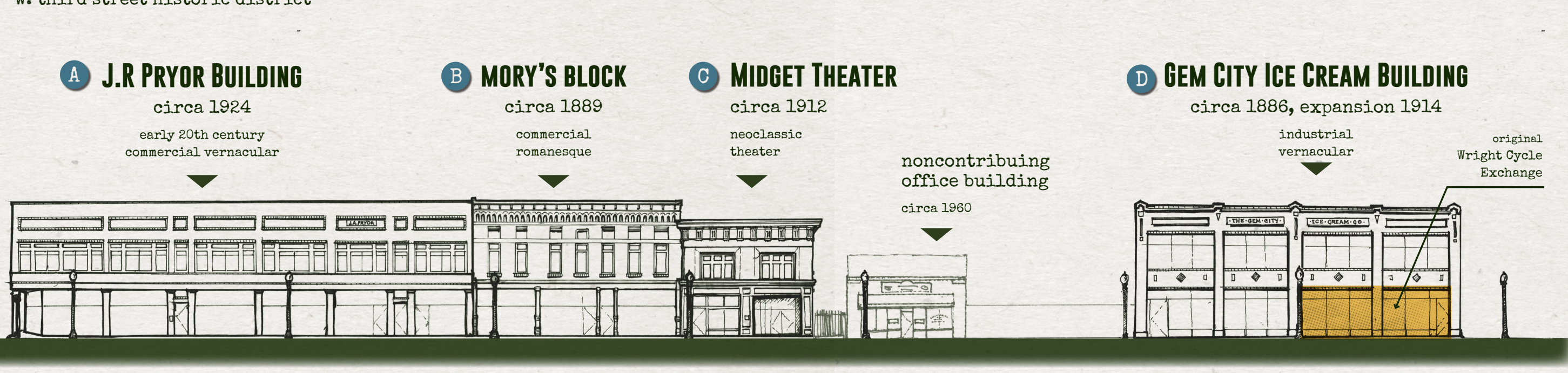
THE BREWING PROCESS



WRIGHT - DUNBAR CRAFT COLLECTIVE



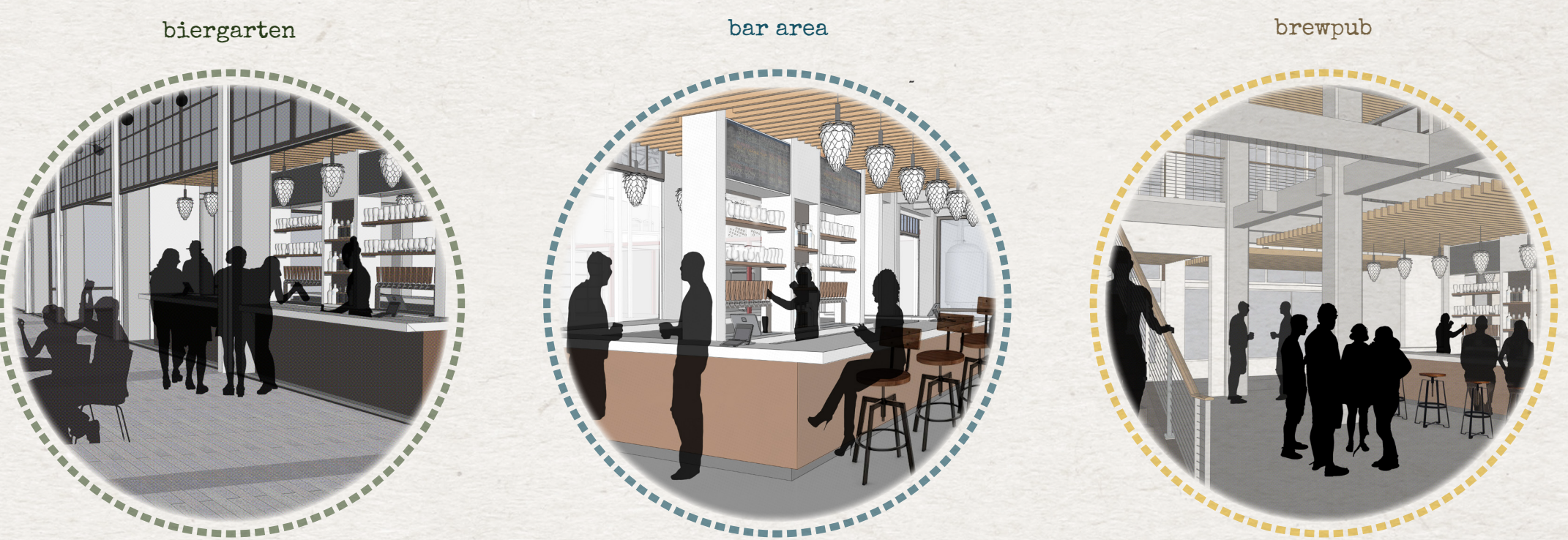
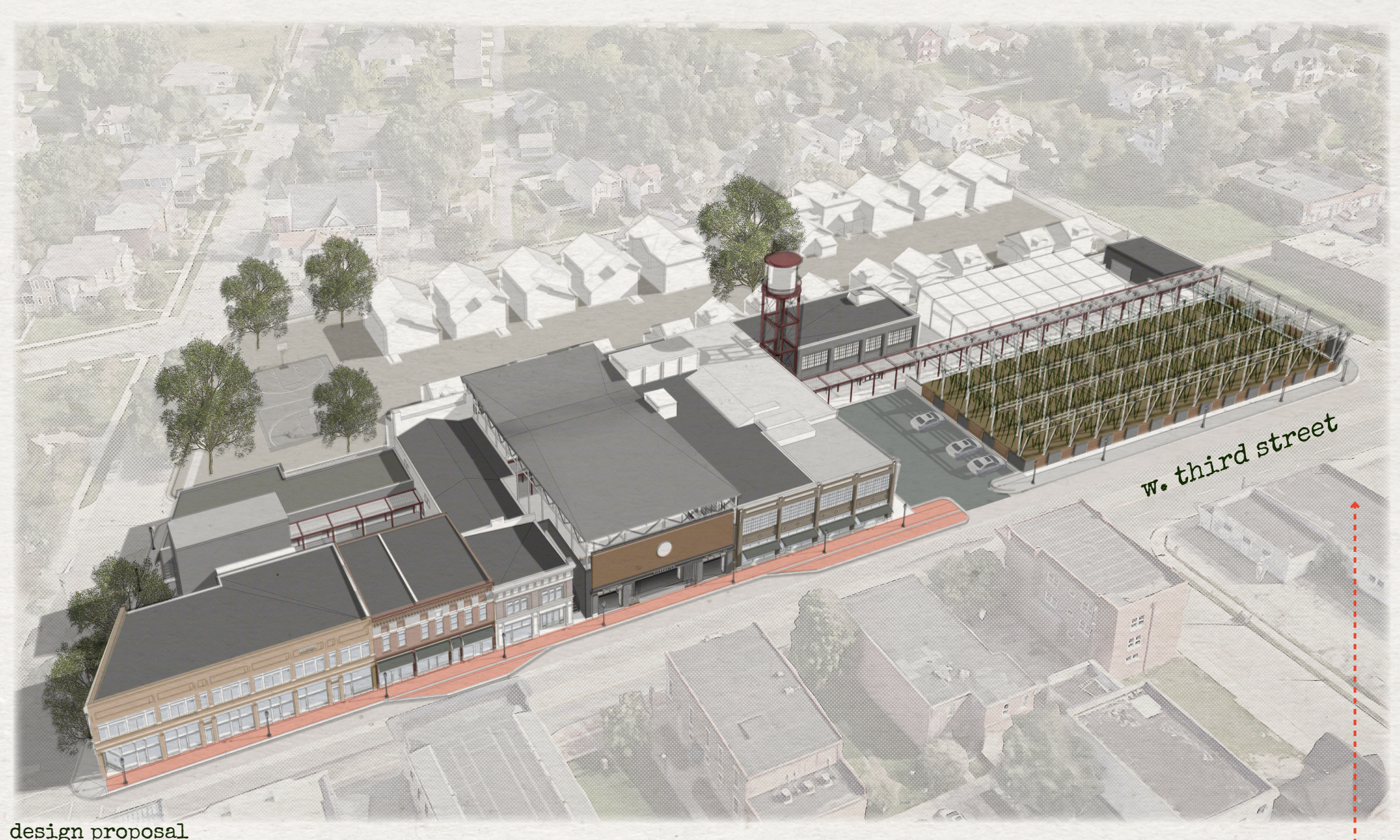
historic properties w. third street historic district



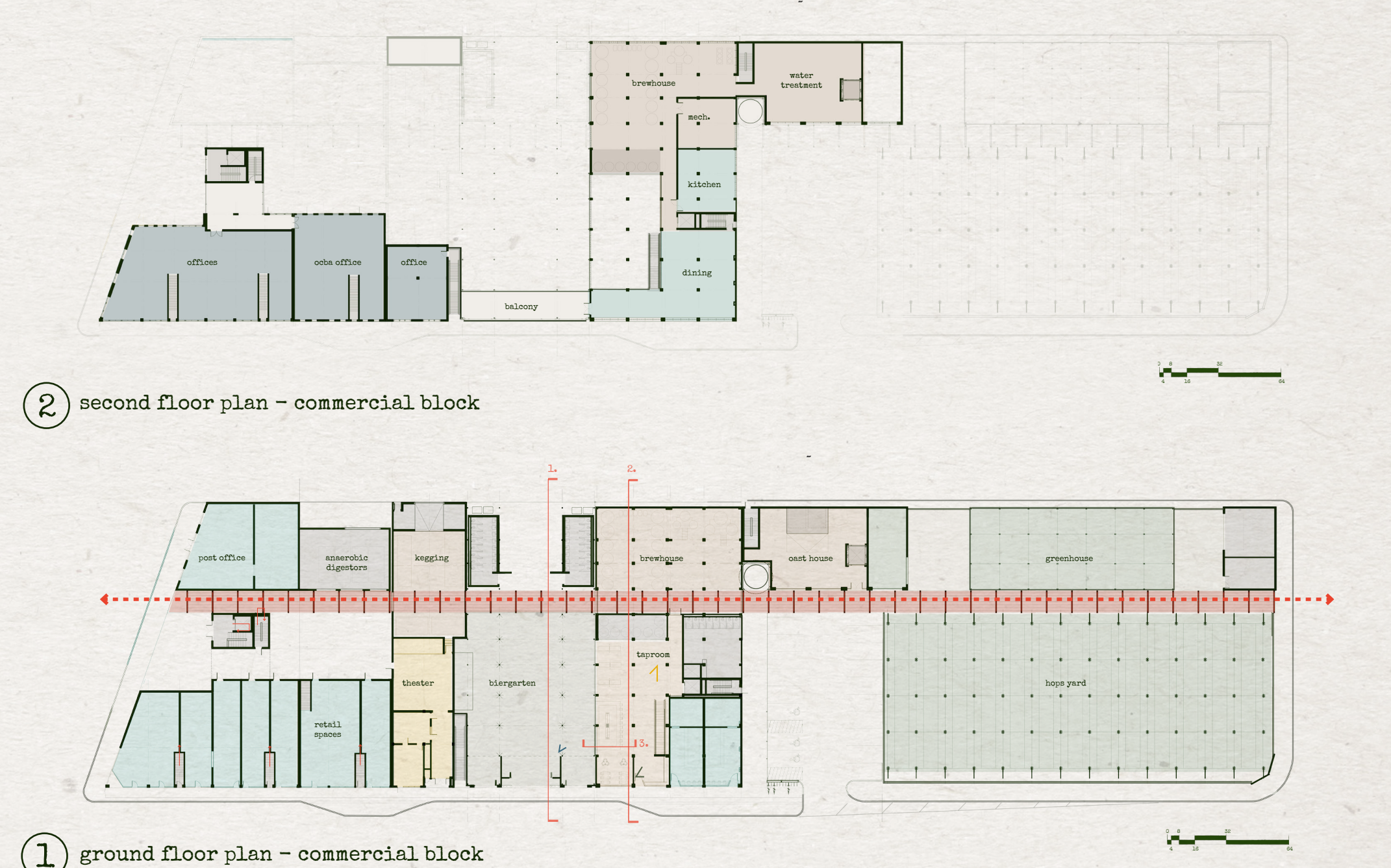
REHABILITATION STRATEGIES



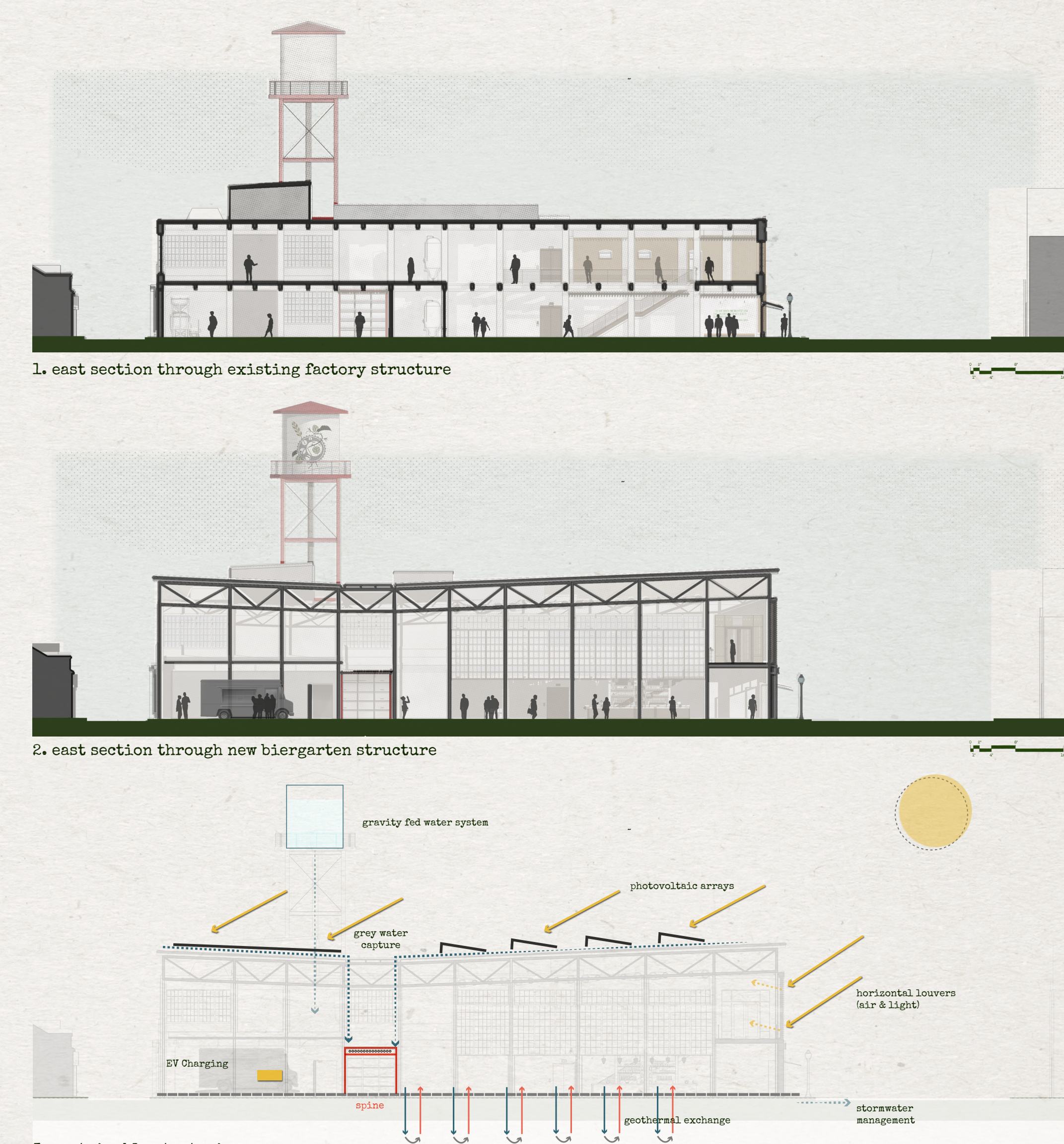
site perspective scale 1/16" = 1'-0"



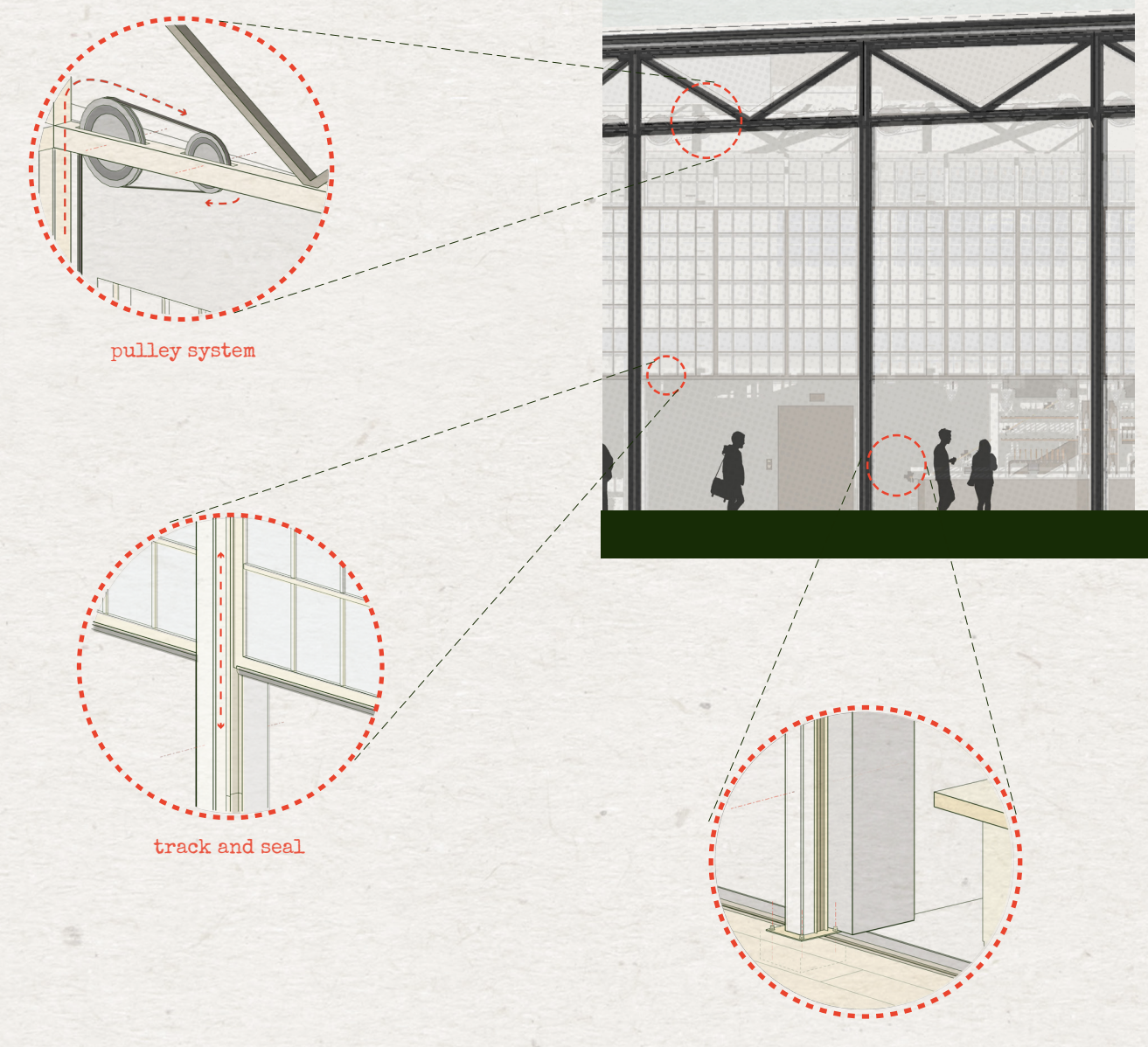
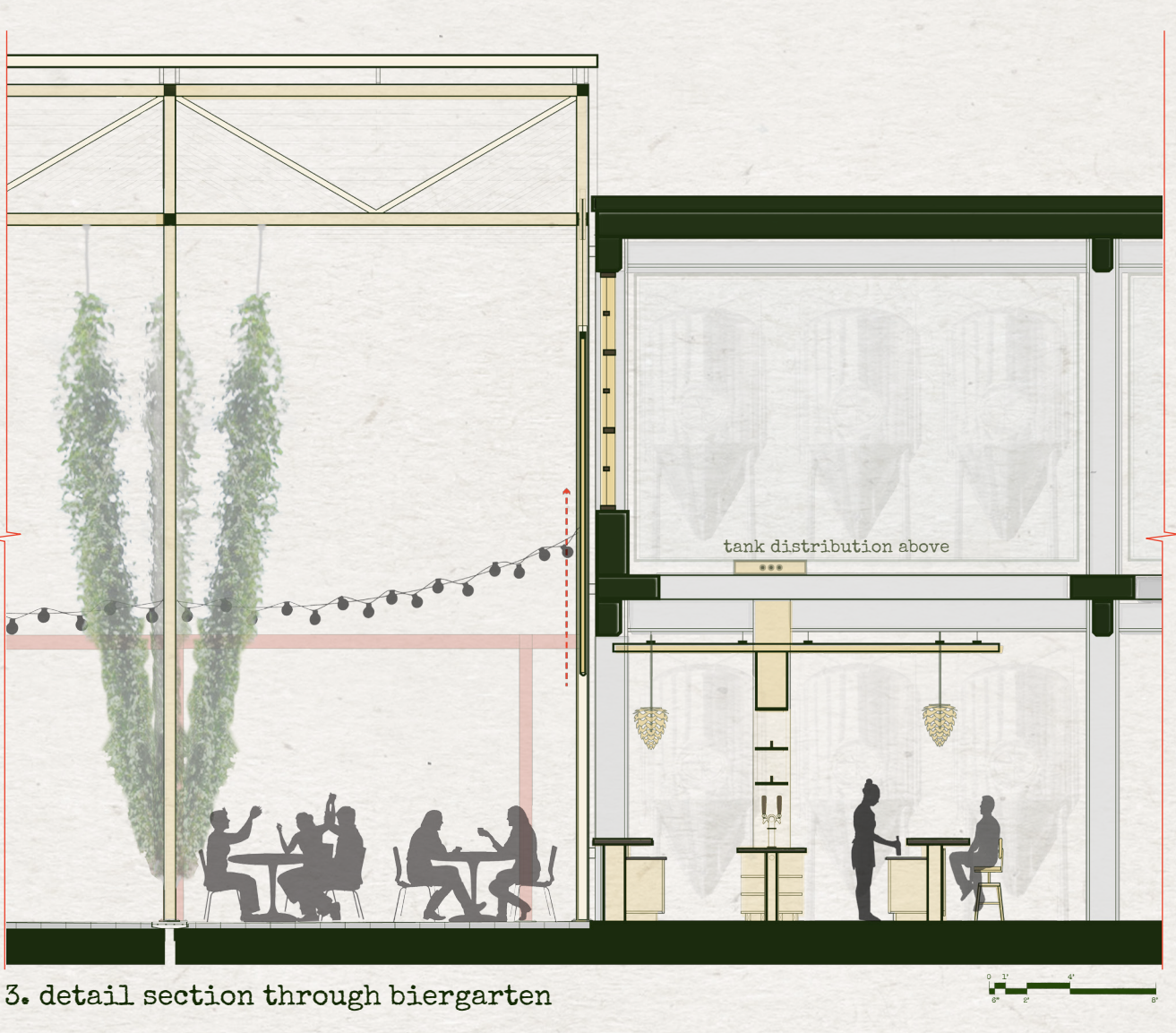
commercial floor plans scale 1/16" = 1'-0"



brewery sections scale 1/4" = 1'-0"



biergarten details scale 1/2" = 1'-0"



STRUCTURAL INTERVENTIONS @ gem city ice cream building (back to main)

