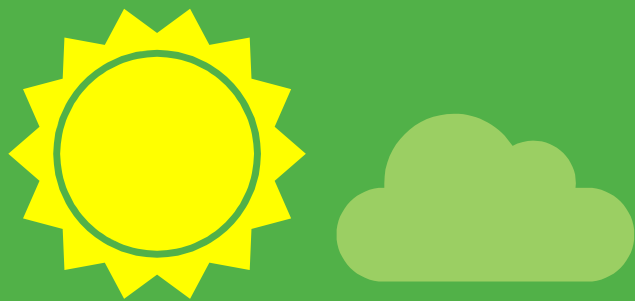
A decorative graphic on the left side of the slide features a central, large, teardrop-shaped leaf filled with an aerial photograph of a green agricultural field with distinct rows of crops. This central leaf is surrounded by four other elements: a large light green circle at the top left, a smaller solid green circle at the top center, a smaller leaf-shaped segment with a photograph of a field at the bottom left, and another smaller leaf-shaped segment with a photograph of a field at the bottom center. The entire graphic is set against a plain white background.

Farming and Folk Art in Prince George's County



The Folk Art and Agricultural Relationship in Maryland and Prince George's County



The **Ujamaa Cooperative Farmers Alliance** is a network of farmers and other constituents to **pool resources**.

However, it **lacks connections to local artists** who may need access to local products.

The Folk Art and Agricultural Relationship in Maryland and Prince George's Counties

Gateway Arts District is a directory of **500+** artists in the DMV area. It lists their media, contact information, and inspirations.

It's more of a **directory** than a connection platform. They still **lack contact with farmers** and anyone who they could obtain resources from.





347

of farms in Prince George's County

Nursery, Grains, and Vegetables

Top items produced in Prince George's
County

43,310

Acres of farmland in Prince George's
County



How can we connect local farmers and artists?

Preliminary research on agricultural technology, local products, and a list of farmers and artists to interview helped us learn more about needs



Current Agricultural Technology

- Temperature sensors
- Moisture sensors
- GPS technologies
- Robots for fruit picking, harvesting, or soil maintenance
- Carding and spinning machines for wool

Benefits

- Higher crop productivity
- Decreased use of water, fertilizer, and pesticides
 - Keeps food prices down
- Reduced impact on ecosystems
- Reduced chemical runoff





Preliminary Research on Local Fibers



Plant Fibers

Cotton

Used in clothing and other textiles



Hemp

Anyone can apply to be a hemp farmer! Used to make clothing



Animal Fibers

Mohair

Used in scarves, winter hats, suits, sweaters, coats



Wool

Versatile fiber used in yarn and other textiles





Farmer Contacts

Paul Lovelace

Oak'stead Farm
Products: sorghum,
corn, beans,
tomatoes, chickens
(eggs)

paullovelace@gmail.com
606-356-2539

Ergibe Boyd

Theresam Farm
Group
Products: kale,
sorghum, jama jama,
huckleberry, Swiss
chard
ergibeboyd@gmail.com
240-383-0668

Colin Dunphy

Wyoming Farm
Products: guinea
fowl, chestnuts, other
products

colin@wyoming.farm
202-957-0067

Linda Jones

Elements of Nature
Botanical and
Farmaceutical Urban
Farm
Products: flowers, herbs
for tea and other uses,
workshops for urban
farmers and gardeners
lindaajones20735@gmail.com
301-875-2481

Joseph Haamid

George Washington
Carver Urban/Small
Farmer's Coalition
Services: coalition that
does market research for
small farms; manages
programs for small farms
info@gwc-usfc.org;
Joseph.Haamid@md.nacdn.net
202-528-0389

The background features several stylized elements: a large light blue circle at the top left, a green teardrop-shaped leaf with a blue and red floral pattern on the left, a solid green leaf below it, and several other light blue circles of varying sizes scattered across the page.

Artist Contacts

Kibibi Ajanku

Products: dolls, stain glass, cards, and indigo clothing

kibibi.ajanku@gmail.com
443-398-6628

Cynthia Sands

Products: Textiles

cynthiasands@hotmail.com

Diane N'Diaye

Products: jewelry, quilts, sculptures, installation, and performance

703-597-3984 (M);
202-633-6472 (W)

Camila Bryce-Laporte

Products: dolls, fabric, sculpture, and artwork

Camila.bryce.laporte@gmail.com
301-452-1865

Sehar Peerzada

Products: clothing and textiles

seharpeerzada@gmail.com
301-768-2669

Kibibi Ajanku



Diane N'diaye



Sehar Peerzada

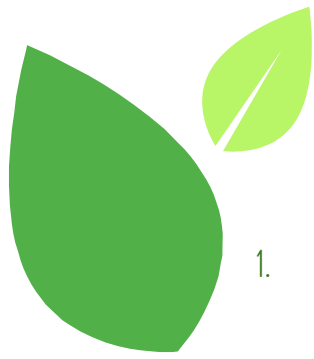


Cynthia Sands



Camila Bryce-Laporte

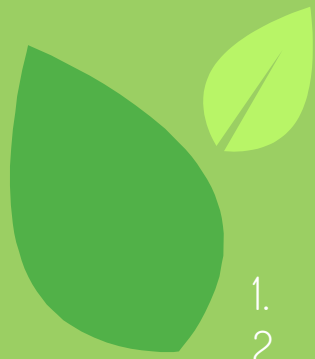




Interview Questions: Farmers

1. What do you currently grow on your farm that are used in art, such as fibers and dyes?
 - a. Would you happen to know what crops are grown by other local farmers? Do they also raise animals?
2. Would you be interested in trying new crops or varieties, if there is a market for them?
 - a. Do you have access to any open land/space to grow new crops?
3. Through what networks/ communities do you share information about harvests or sell crops/ products?
4. Are you aware of different methods of production and processing that you would like to learn about?
5. Are you aware of any technologies that you are interested in incorporating into your farming?
 - a. How accessible are the new technologies for you?
6. What are your thoughts towards Genetically Modified Organisms? Especially in food production?
 - a. Would you avoid such crops on your field or would they serve a temporary purpose in terms of a poor harvest season?
7. Are you aware of the proportion of customers, such as artists, who utilize your products?
8. Do you currently have any relationships with artists? If so, how did it start and what has/ hasn't worked well with partnering with them?
9. Do you have any questions while we're here?





Interview Questions: Artists

1. What materials do you currently use for your art and where do you obtain them?
2. How processed do these products need to be?
3. Would you prefer quality products over quantity, or quantity over quality?
 - a. When looking for a certain product, what are its characteristics?
4. What technologies do you use to make your art? (machines for processing dyes, etc.)
5. Are you aware of any technologies that you are interested in incorporating into your art?
 - a. How accessible are the new technologies for you?
6. Where do you get your products? How can farmers reach more artists like yourself?
7. Do you currently have any professional relationships with farmers? If so, how did it start and what has/has not worked well with partnering with them?
8. Do you have any questions while we are here?





Plans for Analysis and Presentation

- Conduct further research on technology based on interviewee production needs versus capability
- Create a database for products produced/needed
- Continue research on best technological practices and best communication practices between farmers and artists
- Present findings to farmers and artists in a final presentation, summary report, and a 500-700-word findings blog post

Thanks!

QUESTIONS?

