



Food Equity in Prince George's County

Professor Spivy; Darcy Drewyer, Eva Macek,
Jared Williams, Katherine Rush, Laura Exar,
Liana Torres, and Adam Scheckman



UNIVERSITY OF
MARYLAND

ENVIRONMENTAL SCIENCE AND POLICY PROGRAM

Outline

- Background Information
- Project Goals
- Methods
- Tasks/Objectives Progress
- Preliminary Findings
- Obstacles/Difficulties
- Timeline Updates
- Questions





Background Information

- Food injustice is a global phenomenon with communities having limited access to healthy, affordable, and safe food options
- Prince George's County, our area of interest, is heavily impacted by food injustice with 44% of the residents having limited access to healthy food (Kavi, 2019)
 - A correlation exists between living in a low-income, minority neighborhood and having poor access to healthy, affordable, sustainable, safe, and culturally appropriate food (Segal, 2010)





Background Information Continued

- Food Swamps - Communities where access to fast food or other unhealthy options substantially exceeds access to healthier options
 - Contrast to “Food deserts” a.k.a Areas of Limited Access
- Public Health - Food injustice is linked to higher rates of nutritionally-based diseases, such as type II diabetes, heart disease, and certain cancers (Kavi, 2019)
- Minority Impact - Prince George’s County is the highest income, black-majority county in the US, yet experiences a disproportionate degree of food injustice (Healthy Food Policy Project, 2018)





Project Goals

- Identify challenges and opportunities, as well as provide recommendations for creating a healthy, equitable, and sustainable food system that ensures every Prince Georgian has access to nutritious, affordable, sustainably grown, safe, and culturally appropriate food.
- Goals:
 - Provide the The Maryland-National Capital Park and Planning Commission (M-NCPPC) with an updated interactive map showing priority areas of access
 - Identify food trends in the data and report on the associated demographic patterns
 - Give recommendations for future food endeavors and plan for the next capstone group to continue our work





Methods

1. Literature review to determine appropriate definitions
2. Create a geospatial map using data to identify low-income and low-access areas in Prince George's County
 - a. PALS - map of restaurants and food stores
 - b. Data layers from EPA's EJScreen and Johns Hopkins University Center for Liveable Future
 - c. Buffers, cluster analyses





Tasks and Objective Progress

Research Team:

- Completed initial background research and defined key definitions.

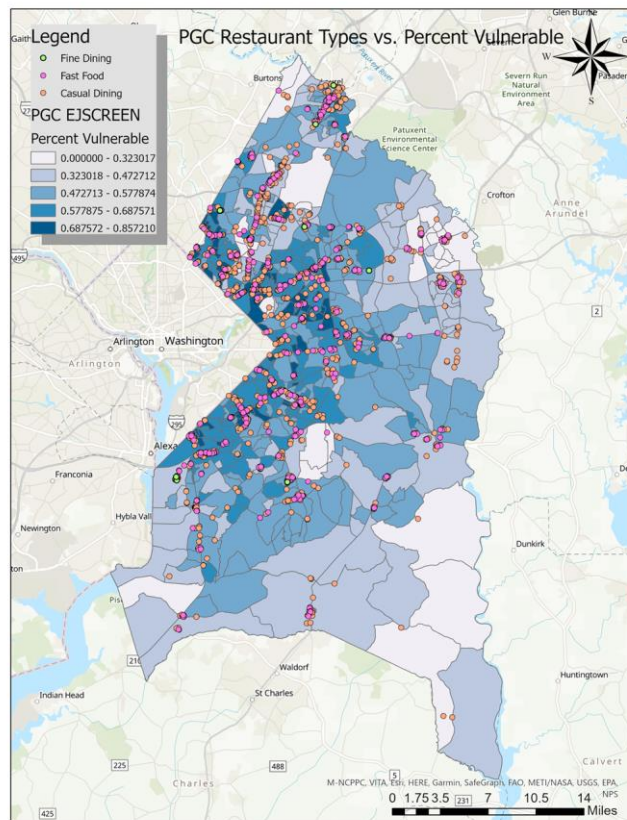
GIS Team:

- Completed preliminary data cleaning/visualization on restaurants, SNAP and WIC, and food stores.



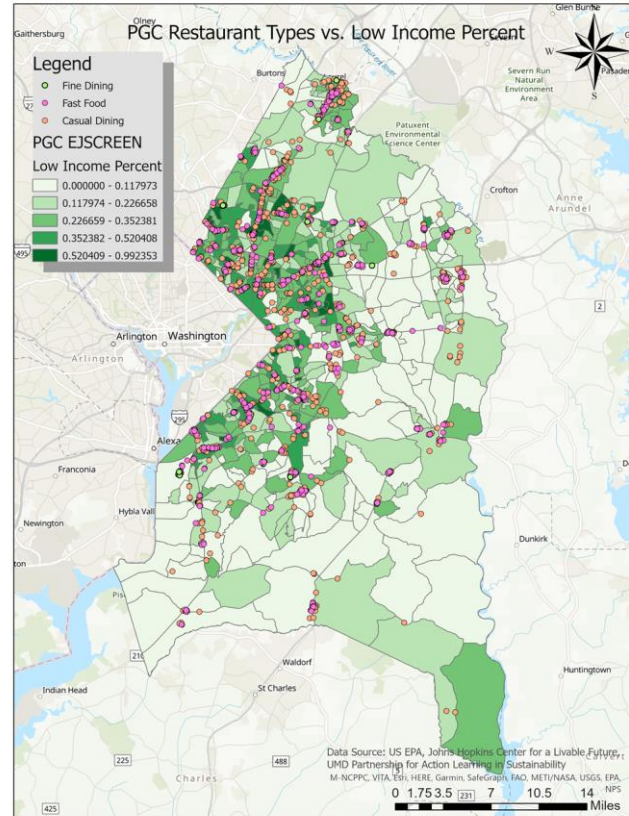


Preliminary Findings: Restaurants & Vulnerable %



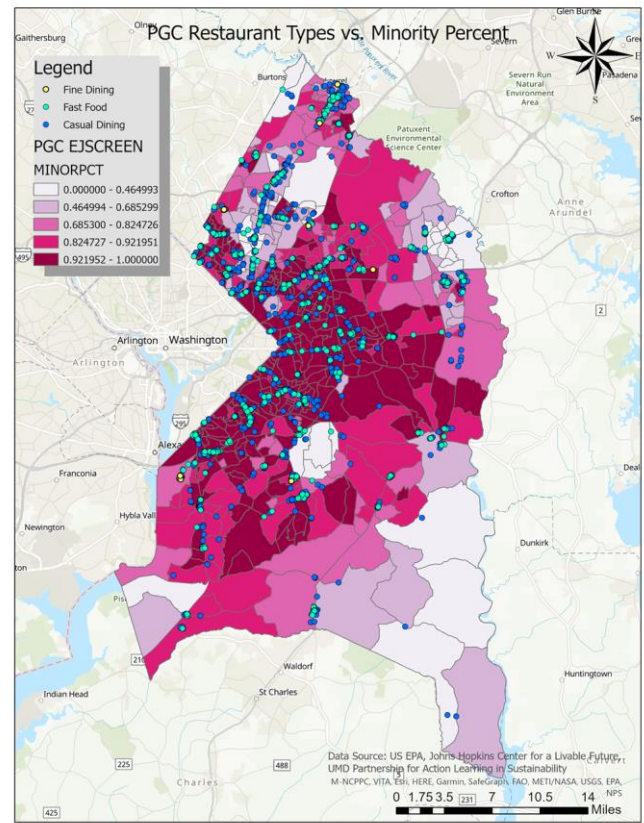


Preliminary Findings: Restaurants & Low Income %



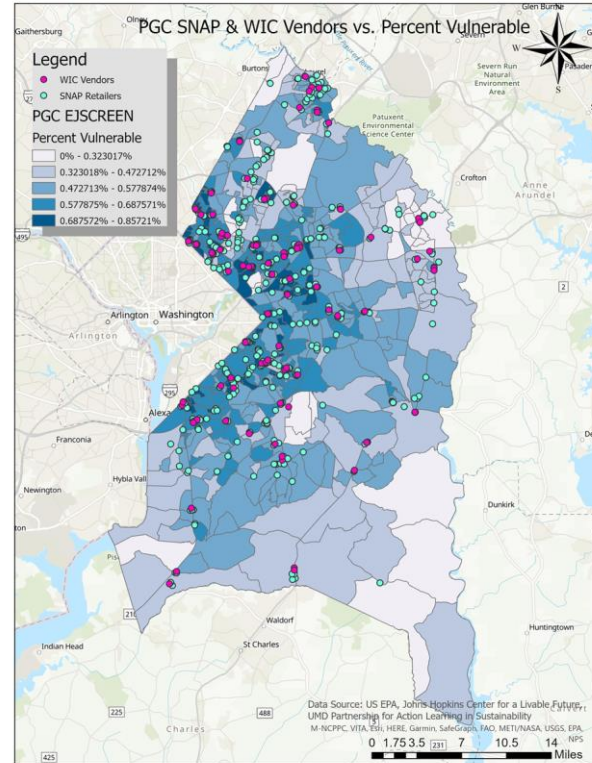


Preliminary Findings: Restaurants & Minority %



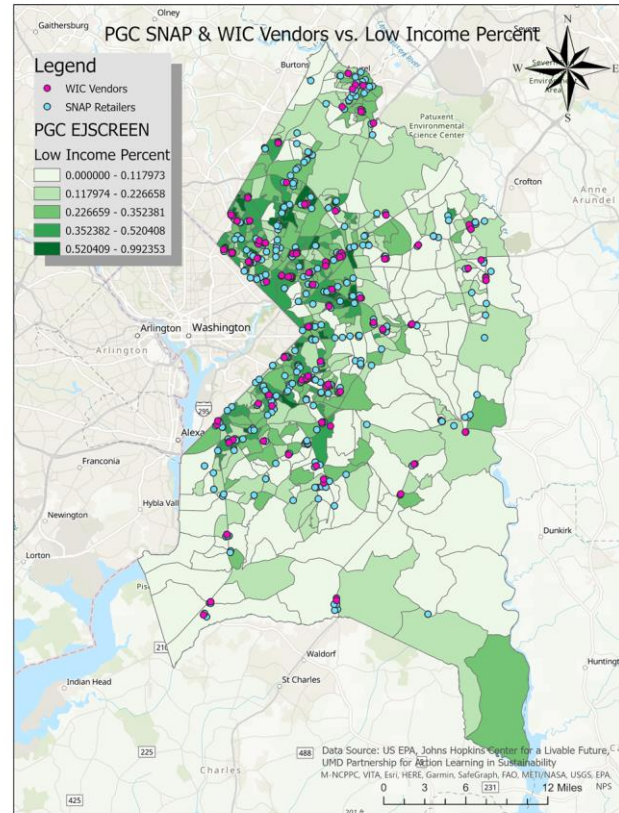


Preliminary Findings: SNAP and WIC & Vulnerable %



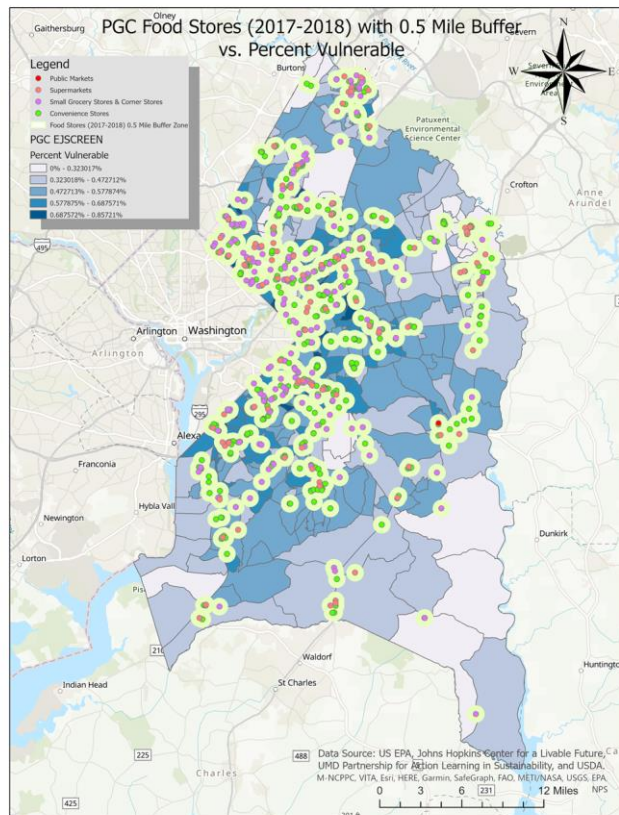


Preliminary Findings: SNAP and WIC & Low Income %





Preliminary Findings: Food Stores & Vulnerable %





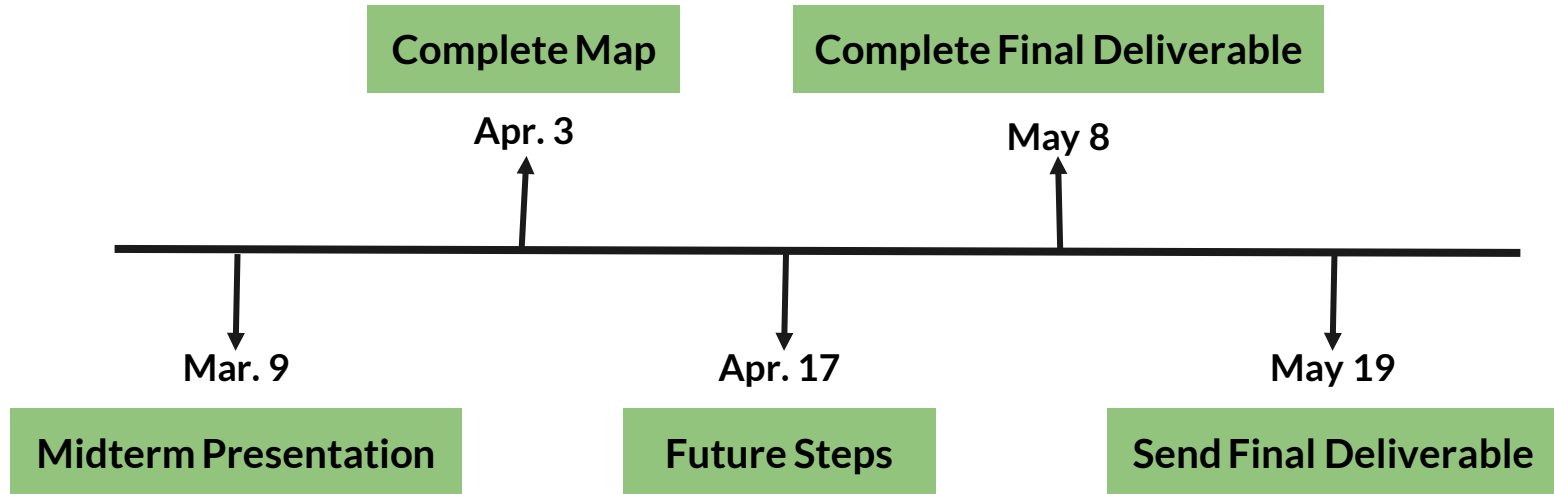
Obstacles or Difficulties

- The GIS Team does not have a shared folder or account, so we have had difficulties working on maps separately and sharing our work





Timeline Updates





Questions?



Works Cited



Segal, Adi. “Food deserts: A global crisis in New York City causes, impacts and solutions.”

Consilience: The Journal of Sustainable Development, Vol. 3, 2010

“Food Equity.” Food Equity - COE: Community for Global Health Equity - University at Buffalo,
September 29, 2020. <http://www.buffalo.edu/globalhealthequity/global-projects/foodequity.html>.

U.S. Department of Agriculture .“Documentation.” October 31, 2019.

<https://www.ers.usda.gov/data-products/food-access-research-atlas/documentation/>

Healthy Food Policy Project. “Prince George’s County Food Equity Council: Taking on Food

Swamps through Policy Change.” Prince George’s County, 2018. <https://healthyfoodpolicyproject.org/case-studies/prince-georges-county-md>

“U.S. Census Bureau QuickFacts: Prince George's County, Maryland.” Census Bureau QuickFacts, July
1, 2019. <http://www.census.gov/quickfacts/fact/table/princegeorgescountymaryland/PST045219>.

Kavi, Lucy, Jair Sinisterra, Coline Bodenreider, Meslech Bellay, Kamran Ayub, Vivek Ravichandran,
Jan-Michael Archer, and Sacoby Wilson. “Environmental Justice and the Food Environment in Prince George's County,
Maryland: Assessment of Three Communities.” Frontiers. Frontiers, October 1, 2019.
<https://www.frontiersin.org/articles/10.3389/fbuil.2019.00121/full>.

“Healthy Food for All Prince Georgians: An Assessment of Access to Healthy Food in Prince
George’s County, Maryland.” The Maryland-National Park and Planning Commission,
November, 2015.