



LISTENING TO THE LAND

History and Interpretation of Montpelier's Cultural Landscape

HISP 711: Final Project Presentation by Carissa Demore



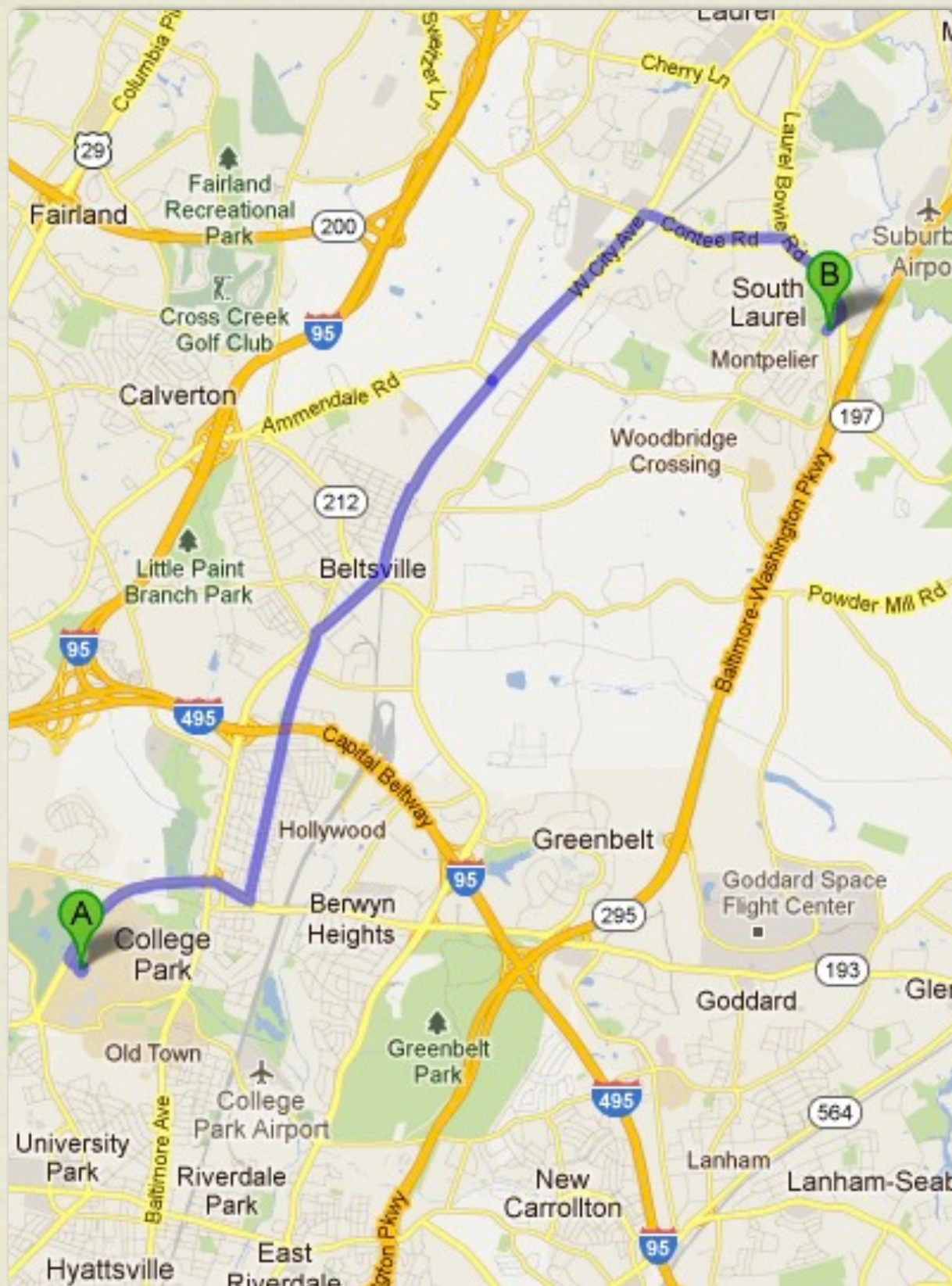
This Presentation
is NOT about:

James Madison's
Montpelier

OR

Montpelier, Vermont







RESEARCH PROBLEM:

Since the mid-20th century, Montpelier has offered interpretation to visitors based almost entirely on the lifestyle of the original family who owned the property and within the limited context of the mansion.

While this interpretive approach has been successful in attracting a particular audience with specific interests in the mansion's architecture or original owners, it is less appealing to a contemporary group of potential supporters, who are diverse in age, ethnicity, and socio-economic status. This broader group is critically important to the development of successful and sustainable preservation efforts.

Understanding and incorporating the physical and cultural landscape into Montpelier's interpretive strategy will enhance the relevance of the site's history to a contemporary audience, aligning the preservation of the site with twenty-first century values and asserting its importance in the ongoing dialogue about the relevance of historic fabric to contemporary life.

TONIGHT'S PRESENTATION

- Approach/Methodology
- Periods of Development
- Brief Summary of Research
- Interpretation



RESEARCH QUESTIONS

Historical

→ What are the boundaries and characteristics of this period of development?

Cultural

→ Whose story is being told? How are people relating to the landscape?

Environmental

→ How do humans influence biodiversity and ecological processes?

Regional

→ What is the surrounding context? How does Montpelier relate?

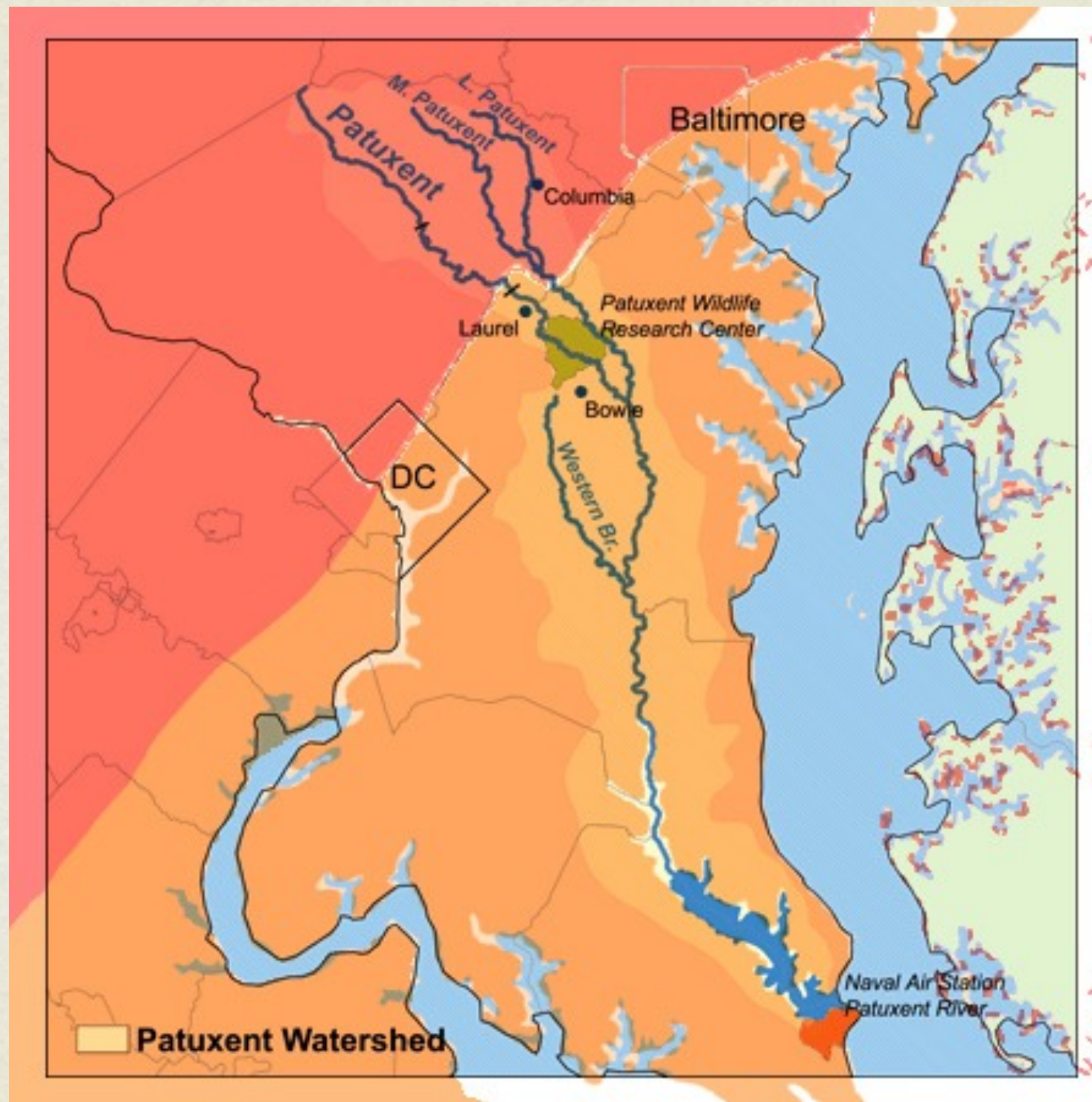
PERIODS OF DEVELOPMENT

- Wilderness
 - 12,000BP-1658
- Plantation
 - 1658-1888
- Country Manor
 - 1888-1961
- House Museum
 - 1961-Present



PERIOD I: WILDERNESS
(12,000BP-1658)

PERIOD I: WILDERNESS (12,000BP-1658)



PERIOD I: WILDERNESS (12,000BP-1658)

Stage	Period	Years BP	Subsistence	Organization
Paleoindian		12,000BP	Hunting and Gathering	Dispersed Bands
Archaic	Early Archaic	10,000BP		Bands
	Middle Archaic	8,500 BP		
	Late Archaic	5,000BP	Intensified Hunting and Gathering	Bands/Tribes
Woodland	Early Woodland	3,200BP		
	Middle Woodland	2,500BP	Hunting and Gathering with Incipient Horticulture	Tribes
	Late Woodland	1,100BP	Horticulture with Hunting and Gathering	Tribes/Chiefdoms
Historic		400BP-0	European Contact and Colonization	



PERIOD II: PLANTATION (1658-1888)

PERIOD II: PLANTATION (1658-1888)

- 1669, Richard Snowden I purchases 500 acres called “Iron Mine”
- Builds Birmingham Manor
- Develops Snowden Ironworks

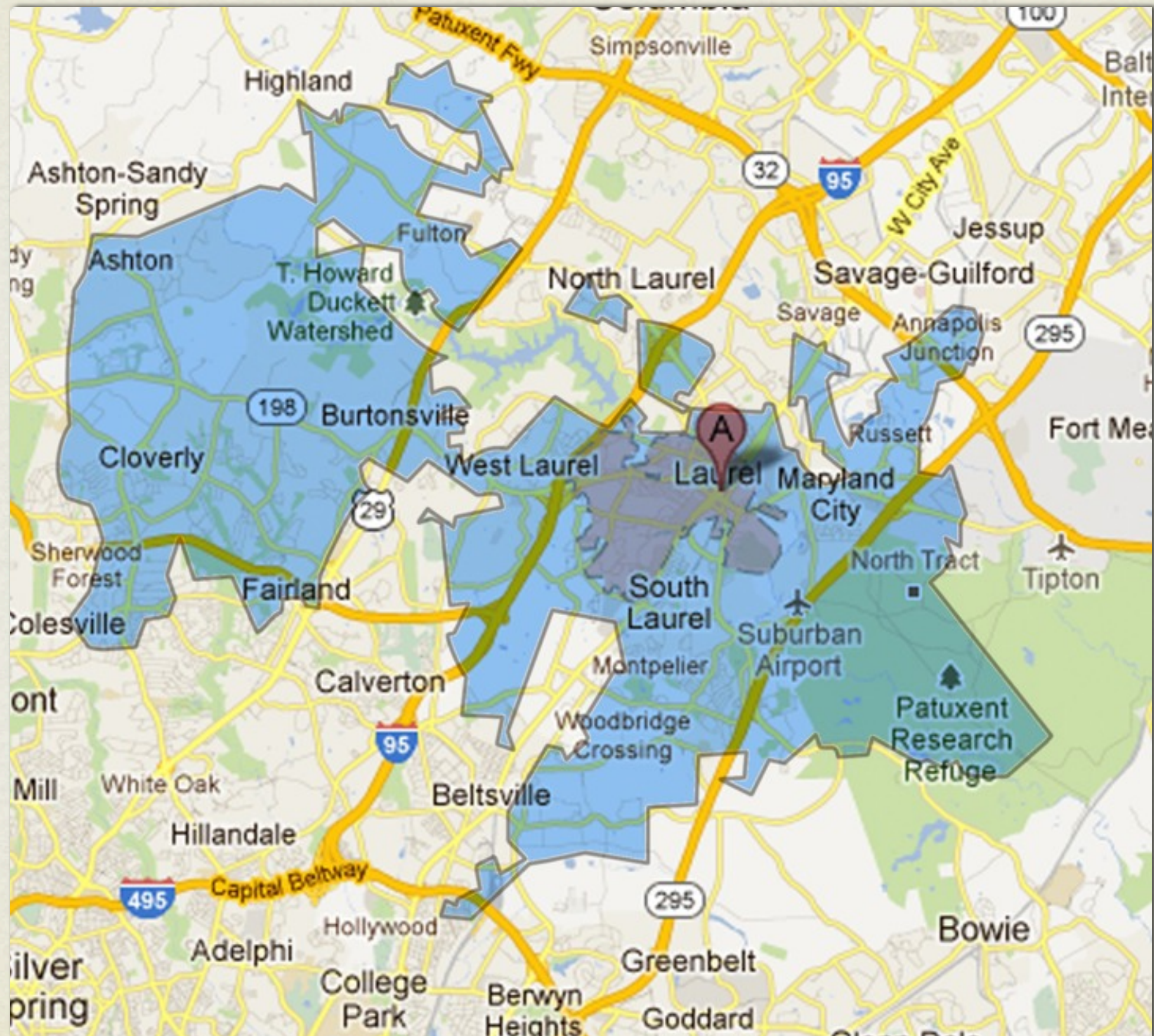


Snowden Ironworks
(current condition)

PERIOD II: PLANTATION (1658-1888)



PERIOD II: PLANTATION (1658-1888)



PERIOD II: PLANTATION (1658-1888)



PERIOD II: PLANTATION (1658-1888)



PERIOD II: PLANTATION (1658-1888)



PERIOD II: PLANTATION (1658-1888)



PERIOD II: PLANTATION (1658-1888)



PERIOD III: COUNTRY MANOR
(1888-1961)

PERIOD III: COUNTRY MANOR (1888-1961)

“like a pearl in a pigsty”

-Eleanor Fitzgibbon, 1916

PERIOD III: COUNTRY MANOR (1888-1961)



Montpelier Manor Farms

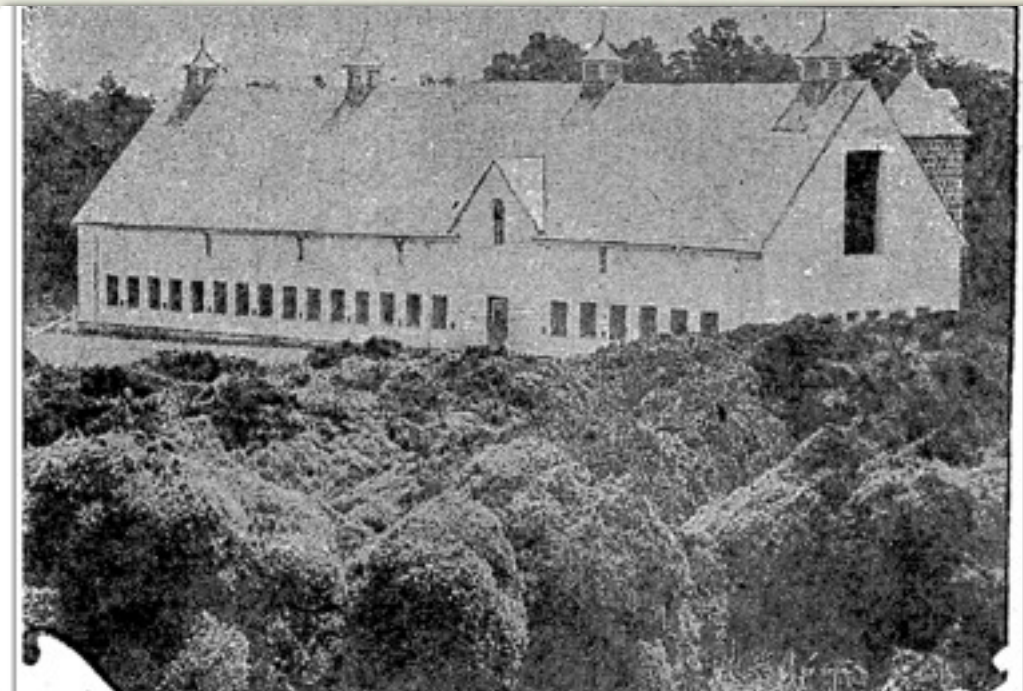
LAUREL, MD.

ELEANOR FITZGIBBON, Owner

Purebred
STOCK

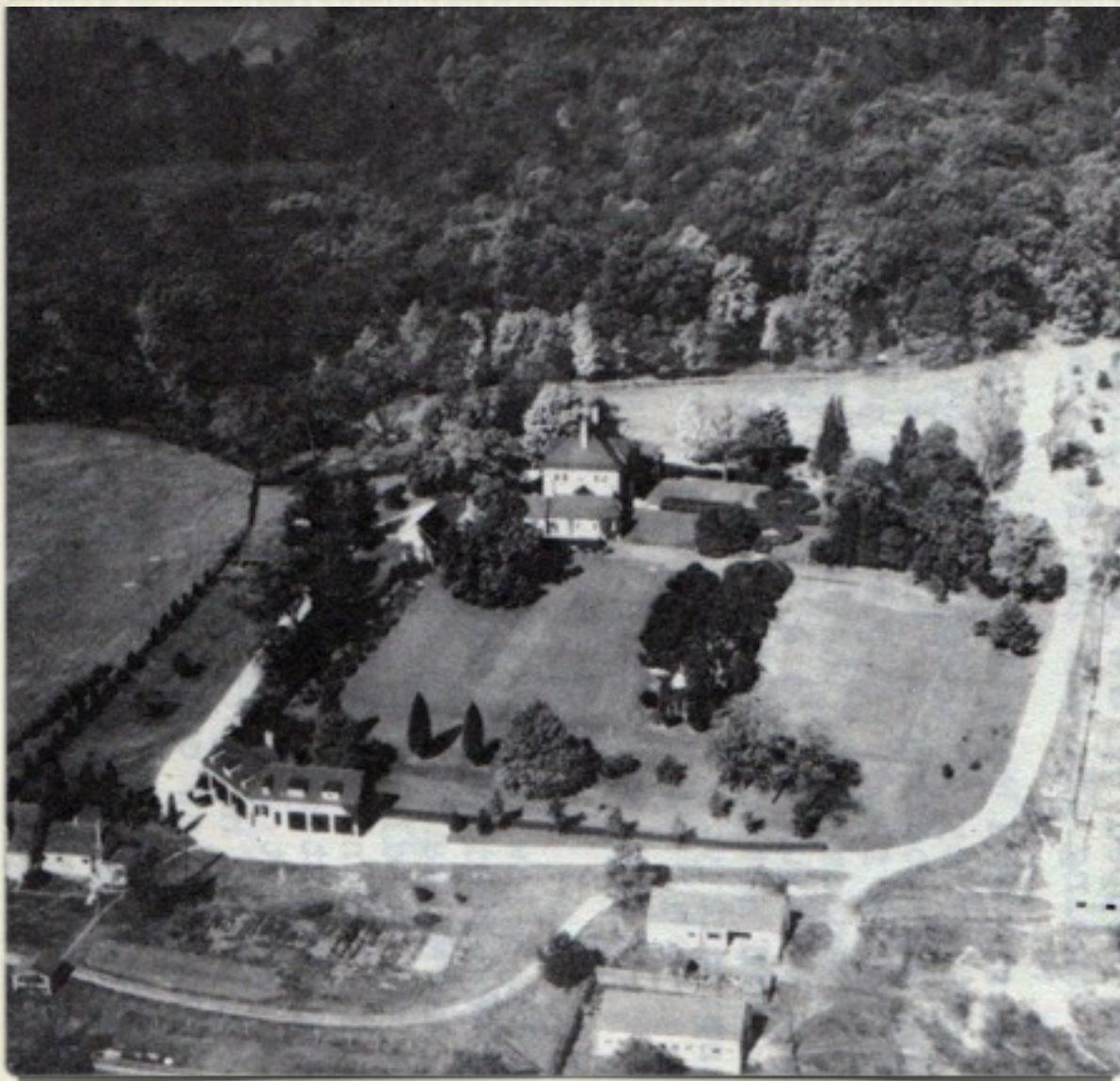
REGISTERED WITH THE AMERICAN SOCIETY OF ANIMAL BREEDERS

Montpelier Jerseys
Snow Hill Berkshires
White Leghorns



PERIOD III: COUNTRY MANOR (1888-1961)





PERIOD IV: HOUSE MUSEUM (1961-TODAY)

INTERPRETING FOR THE PUBLIC

