

# Howard County GIS Analysis: Thefts and Assaults

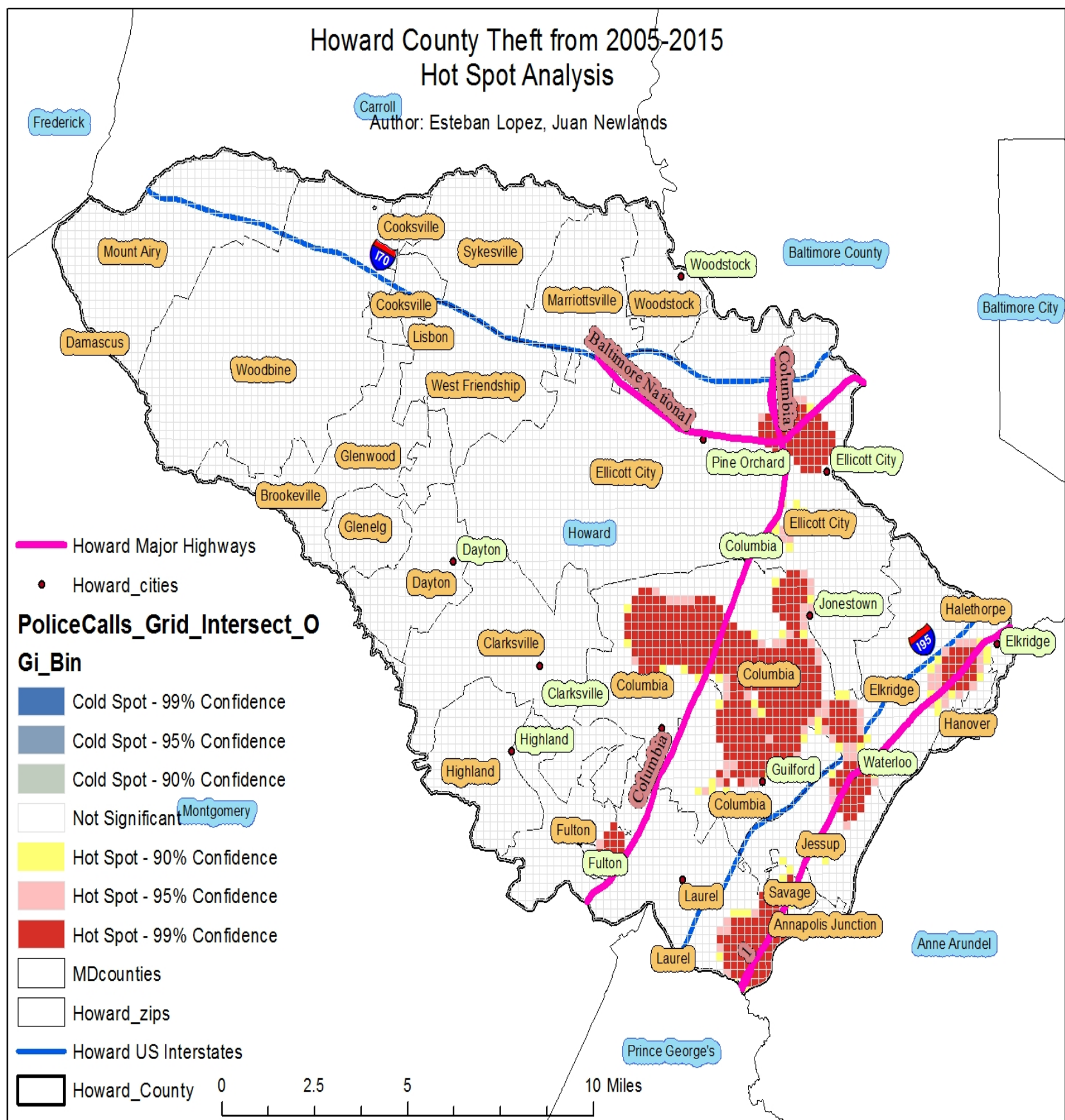
**Research Questions:**

Are thefts and assaults more likely to occur in specific areas in Howard County?

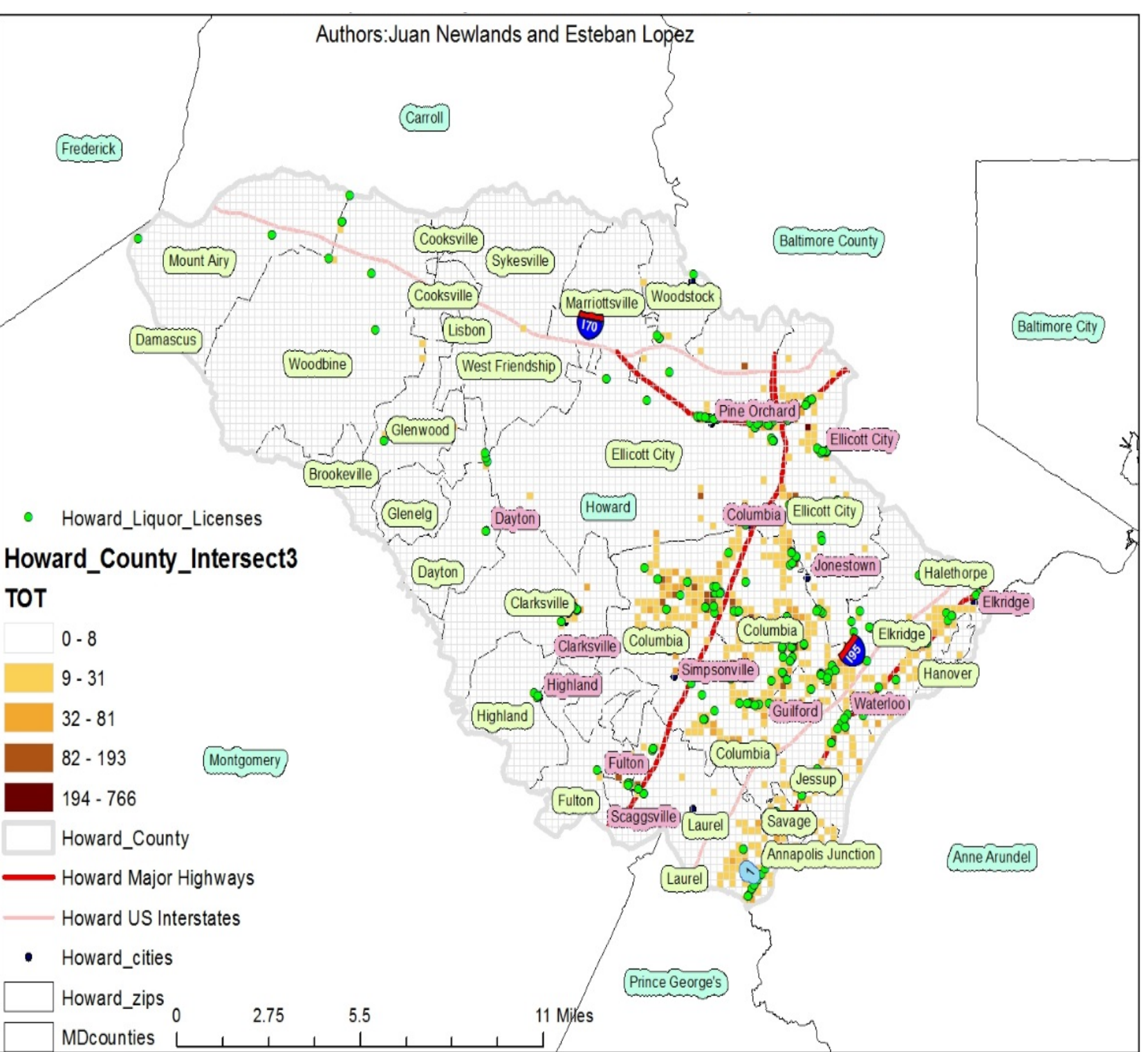
**Conclusion:** For both assaults and thefts we see a few things

Almost all reported incidents of each crime is found in cities and on the route 1. Hotspot analyses reveal that those incidents are clustered in Columbia Town Center and cities along the route 1. Future research should be conducted to identify factors that explain the clusters of high number of assaults and thefts.

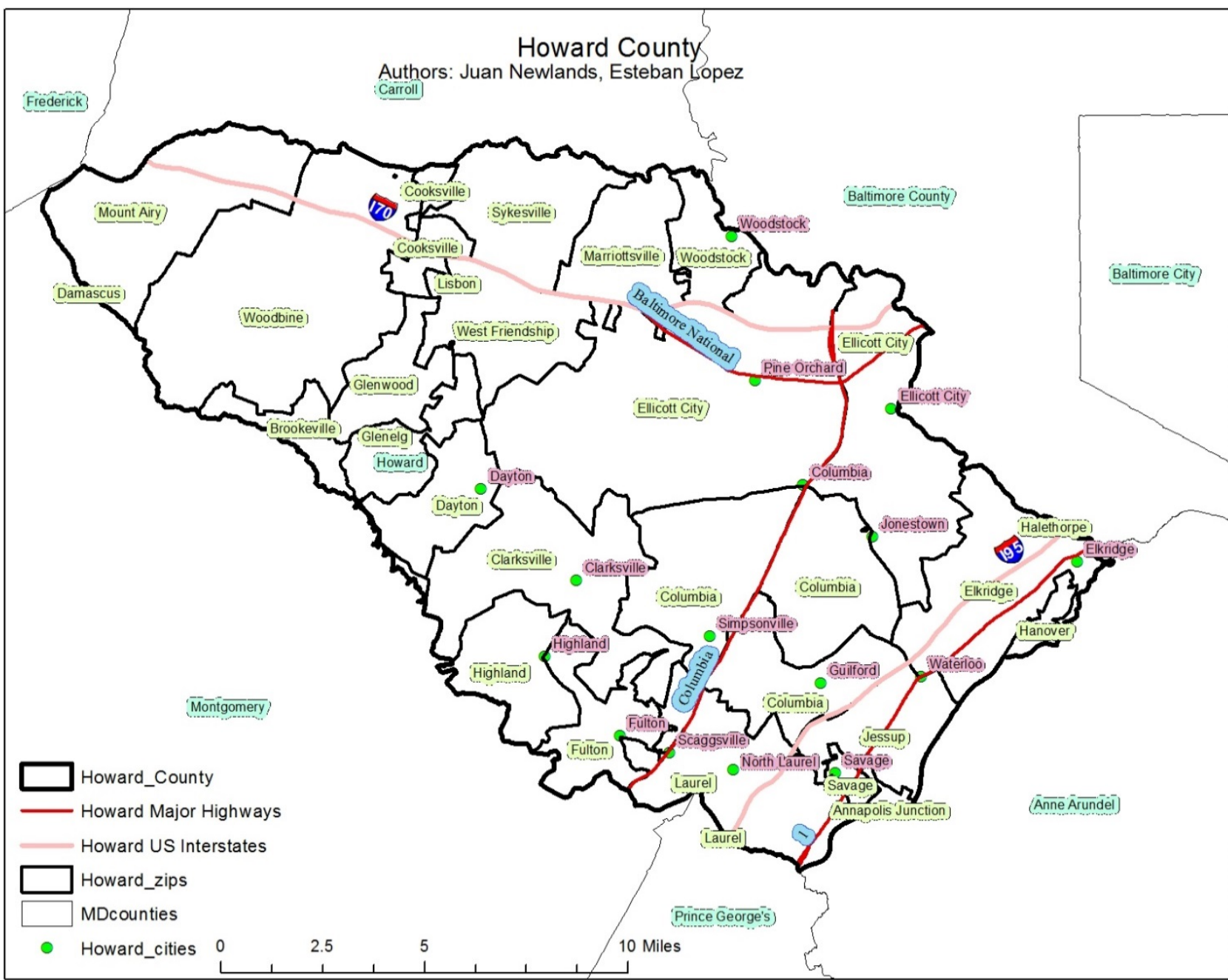
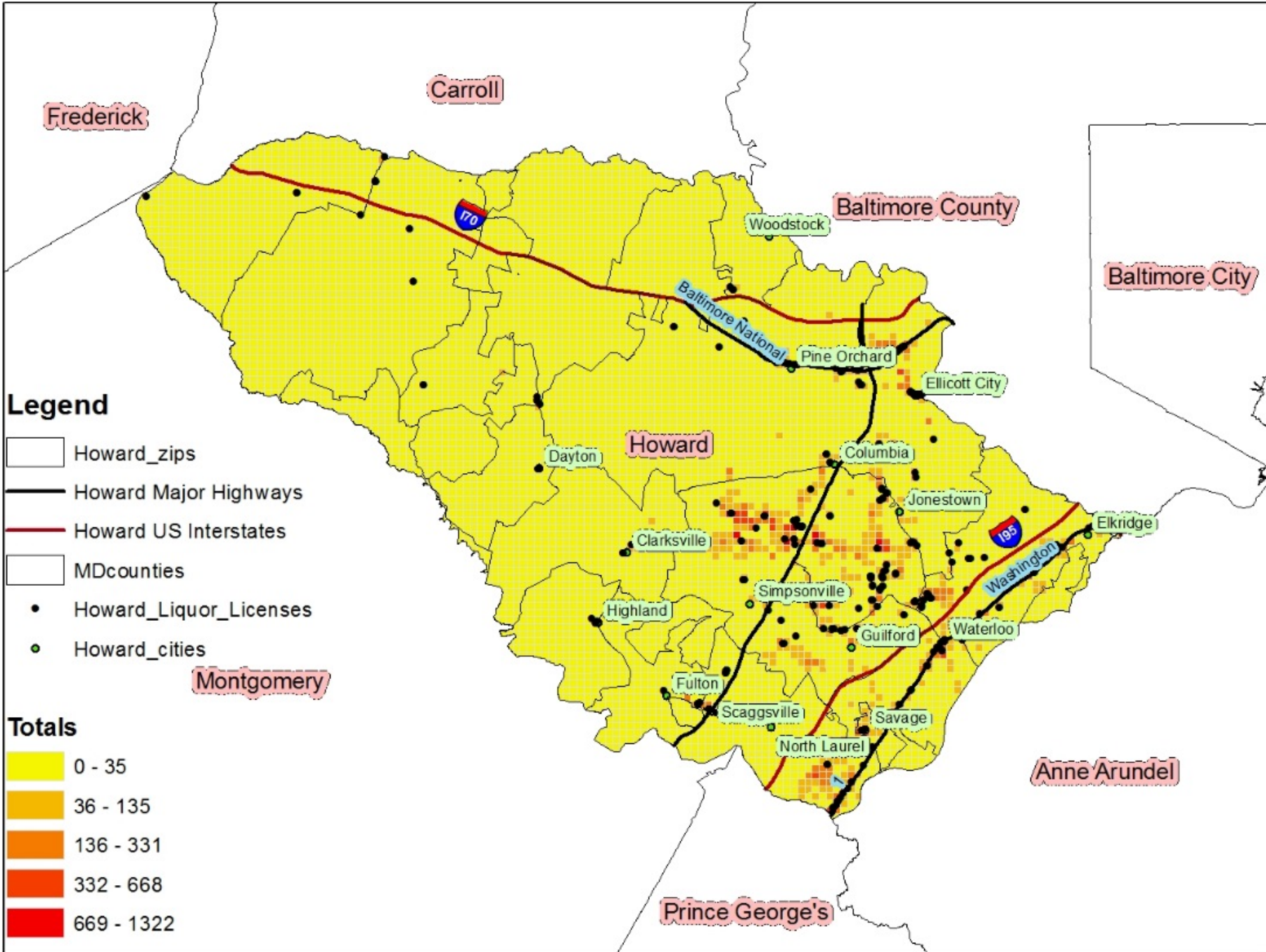
**HOT SPOT ANALYSIS: THEFTS, 2005-2015**



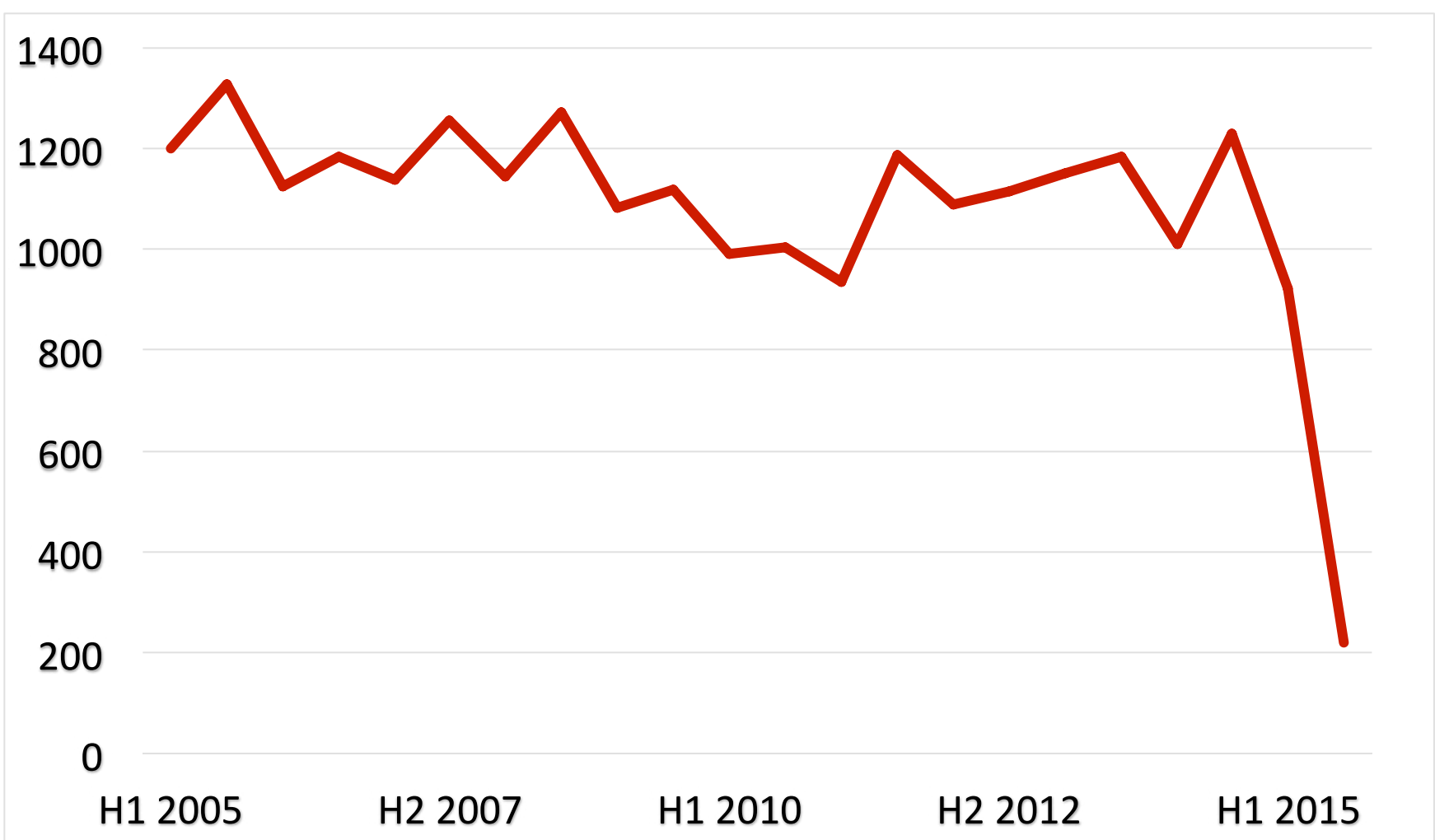
**CHOROPLETH MAP: THEFTS, 2005-2015**



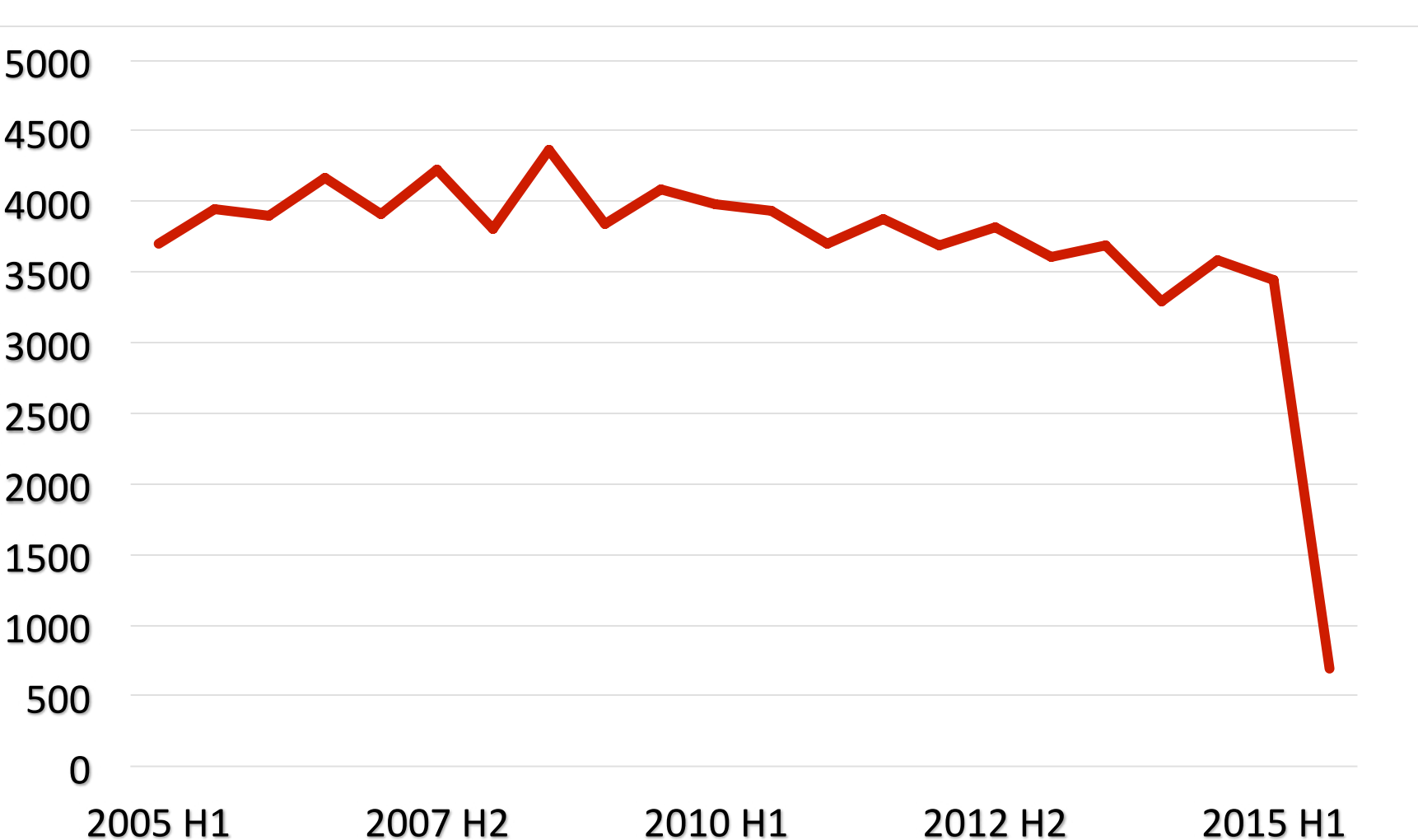
**CHOROPLETH MAP: ASSAULTS, 2005-2015**



**LINE CHART: THEFTS, 2005-2015**



**LINE CHART: ASSAULTS, 2005-2015**



**HOT SPOT ANALYSIS: ASSAULTS, 2005-2015**

