

# PROCESS-DRIVEN & SITE-RESPONSIVE

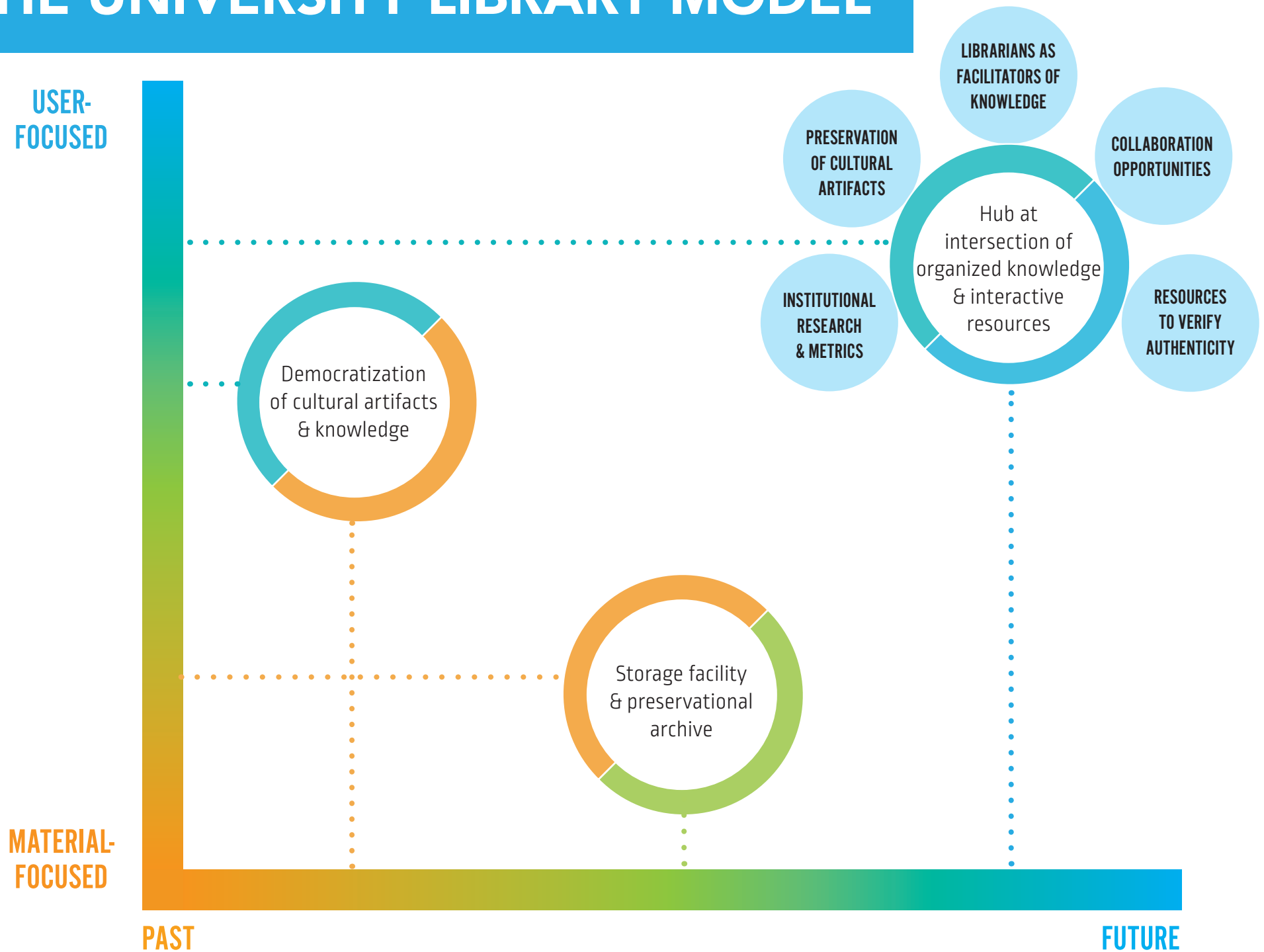
*Designing the Library Service Center of Emory and Georgia Tech*



## KSS

**Scot Murdoch, AIA**  
Partner, KSS Architects

# THE UNIVERSITY LIBRARY MODEL



# COLLABORATION HISTORY & POTENTIAL



**17%**  
overlap between collections



**COMMON INTEREST**  
in the sciences



## **LIBRARY COLLABORATIONS**

- GALILEO, ASERL, ARCHE, GOLD, GETSM and GETS
- Discussions between the library leaders 2010-2012  
(looking at 2CUL as a model)

# WHY A SHARED REPOSITORY? DIVERGENT MOTIVATIONS

## EMORY

CRITICAL NEED:  
**SPACE FOR COLLECTIONS**

- Collections growing at 5000 LF per year
- Continued growth of special collections

## GA. TECH

CRITICAL NEED:  
**BETTER FACILITIES**

- Campus library complex in need of renewal
- Redefining 21st Century Research Library

# OPERATIONS & FACILITIES

## EMORY

- Building
- Technology Support
- Facilities & Security

## GEORGIA TECH

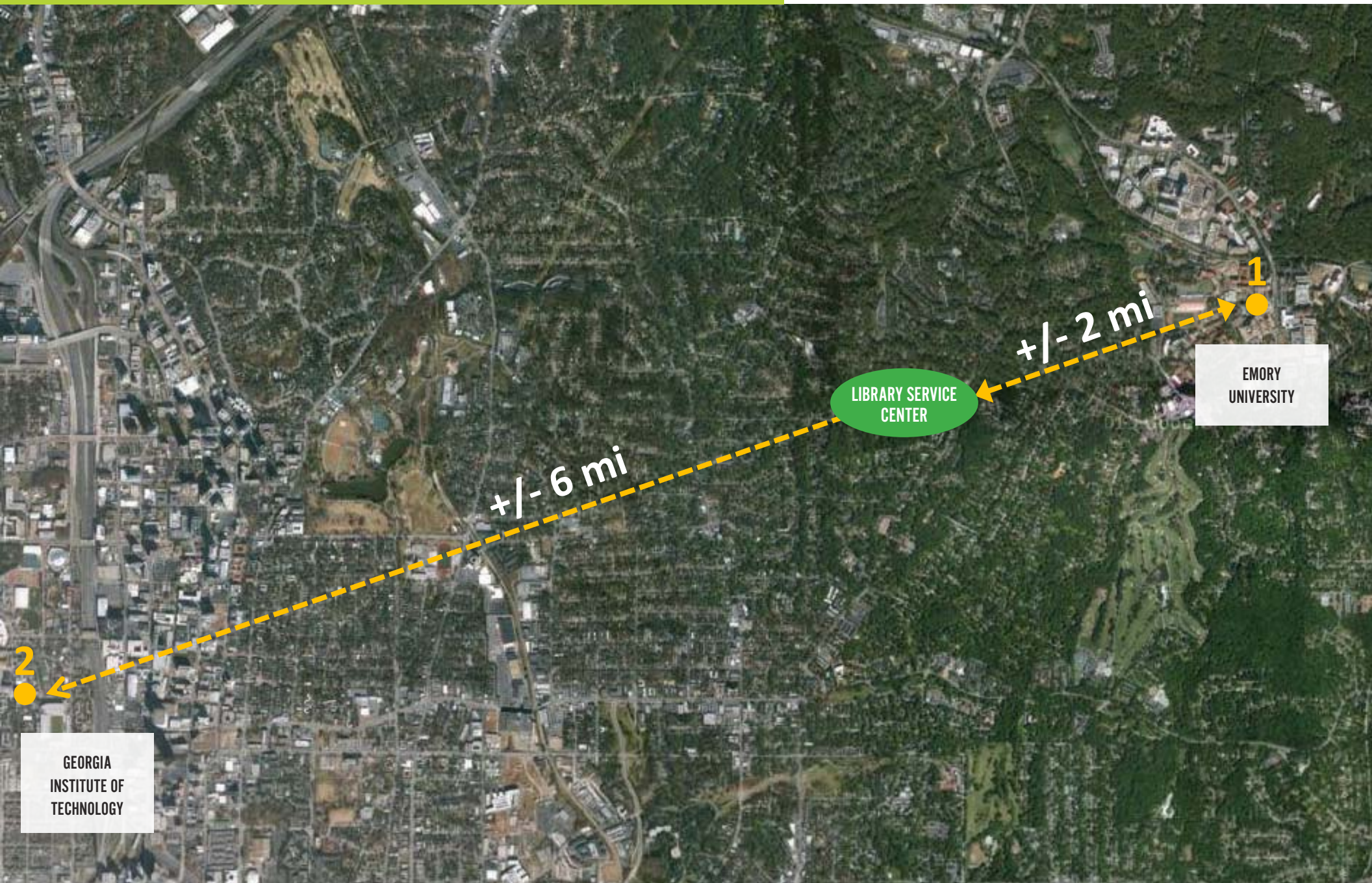
- Staffing
- Daily Operations  
& Services

# VISION & OBJECTIVES

## LIBRARY SERVICE CENTER



# SITE LOCATION



LIBRARY SERVICE CENTER

+/- 2 mi

+/- 6 mi

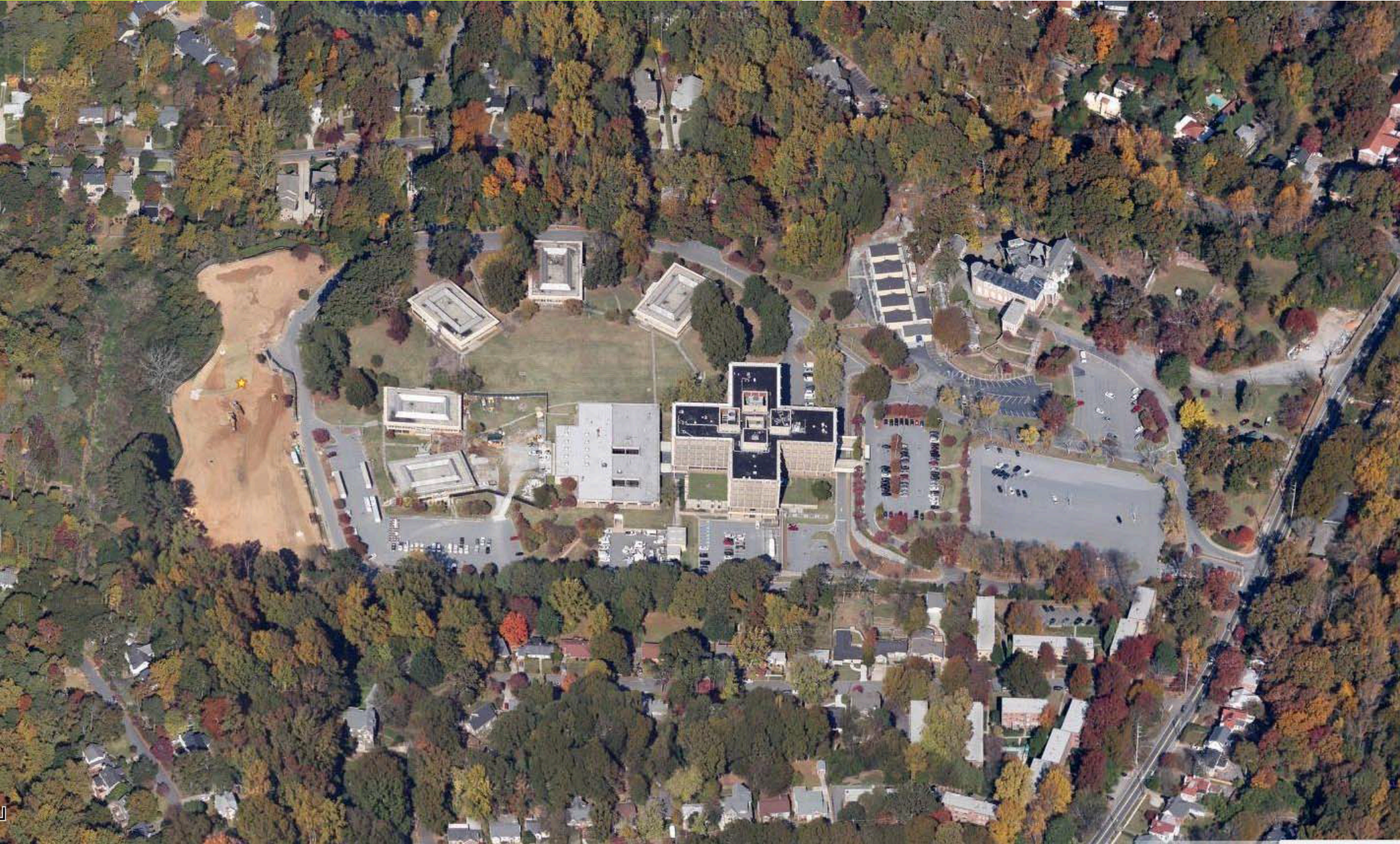
EMORY UNIVERSITY

GEORGIA INSTITUTE OF TECHNOLOGY

1

2

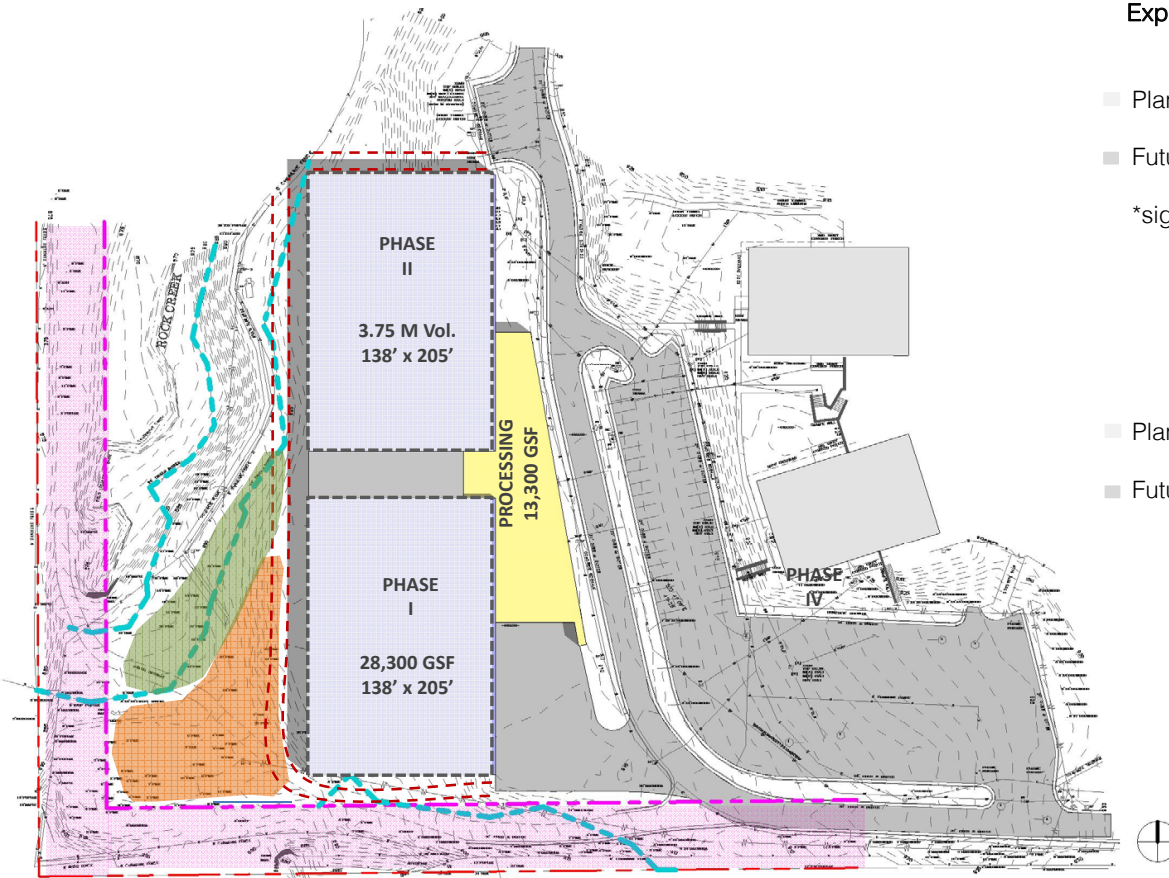
# SITE LOCATION



# SITE PLAN

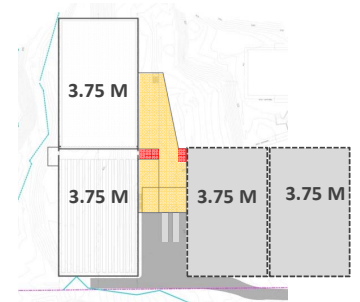


# SITE MASTERPLAN

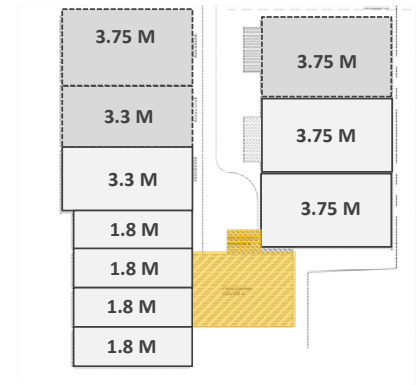


## Expansion Capacity (in volumes)

- Planned 7.5 Million
  - Future Up to 15 Million\*
- \*significant cut required

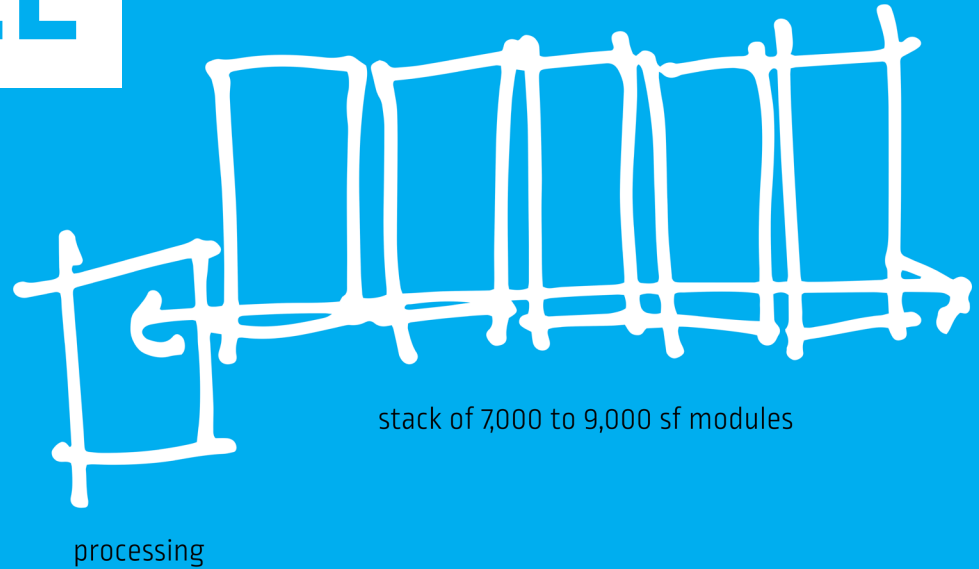


- Planned 18 Million
- Future 28.8 Million

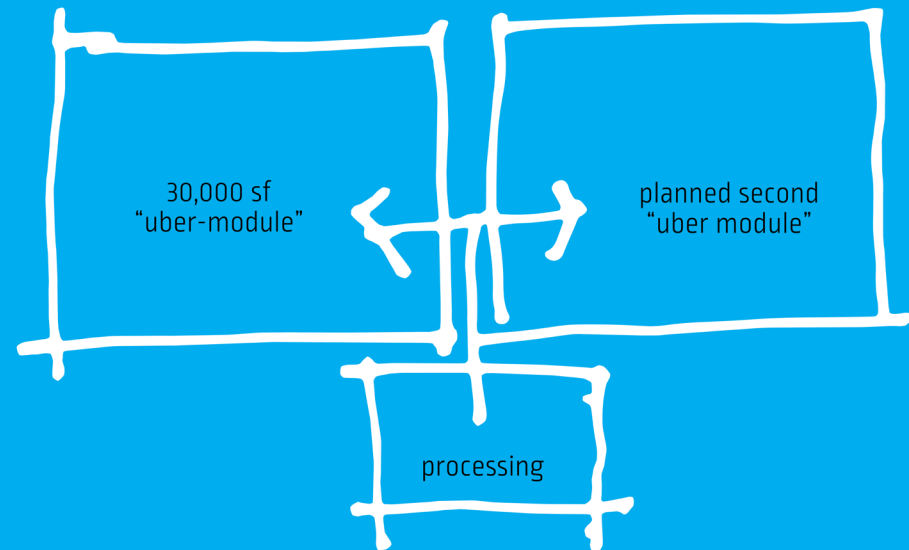


# A NEW MODEL

## The Harvard Model



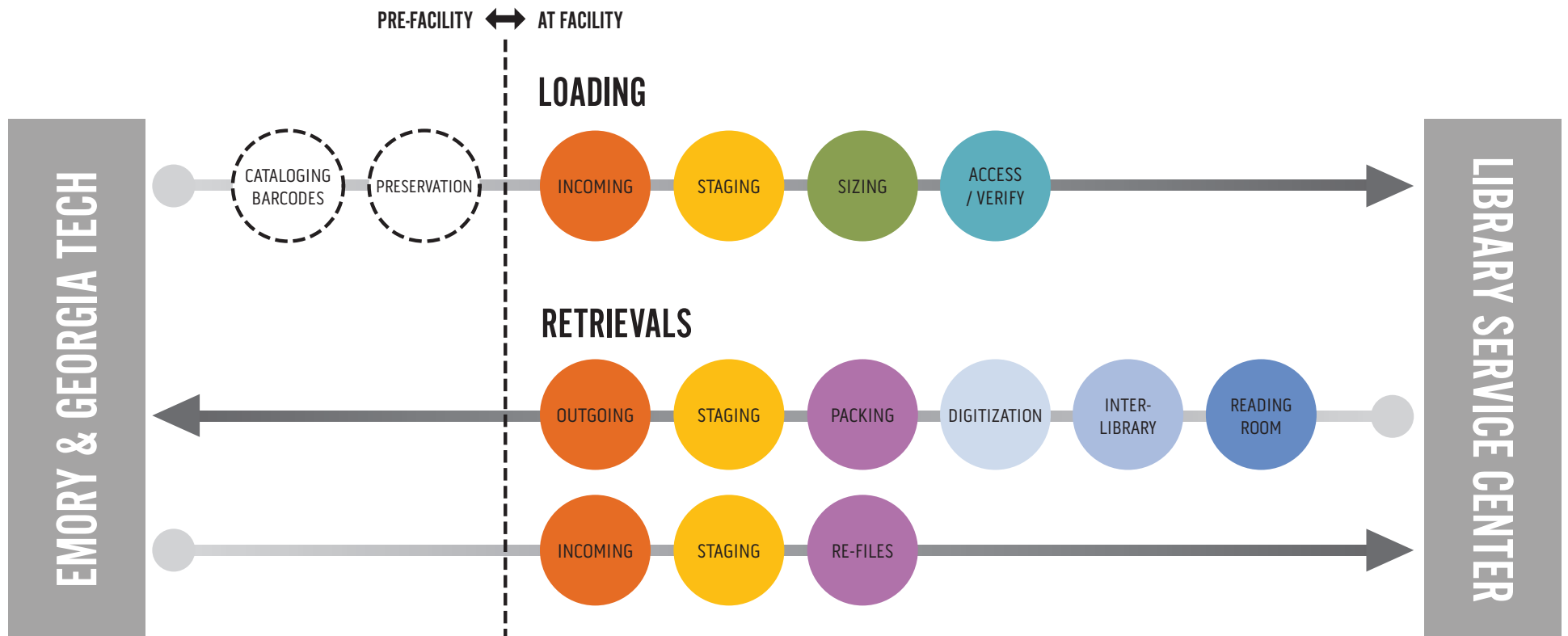
## The EmTech Model



# VIDEO: Process-Driven Design



# PROCESS





# VIDEO: Valuable Place



# DIRECT COSTS

<b>SITE</b>	<b>\$3M</b>
<b>STRUCTURE</b>	<b>\$4M</b>
<b>SKIN</b>	<b>\$1.5M</b>
<b>INTERIORS</b>	<b>\$1.6M</b>
<b>MEP</b>	<b>\$6.3M</b>
<b>TOTAL</b>	<b>\$16.4M</b>

Note: These do not include design, equipment, shelving, and other soft costs.

# Q&A

