



# Biking in the Port Towns

# Team

Andrew Friel, Paige Goldscher, Cristian  
Ortiz, Jen Solan, Jacob Sorensen



A large red chevron graphic pointing to the right, located on the left side of the slide.

# Agenda

Background

Research Questions

Methodologies

Findings

- Interviews with Bikers

- Focus Group with Residents

- Supplemental Interviews

Recommendations

# Background

In partnership with the The Maryland-National Capital  
Park and Planning Commission

to engage women and people of color in biking as  
transportation

to examine the association between biking and  
gentrification in the Port Towns



UNIVERSITY OF  
MARYLAND

**FEARLESSLY  
FORWARD**

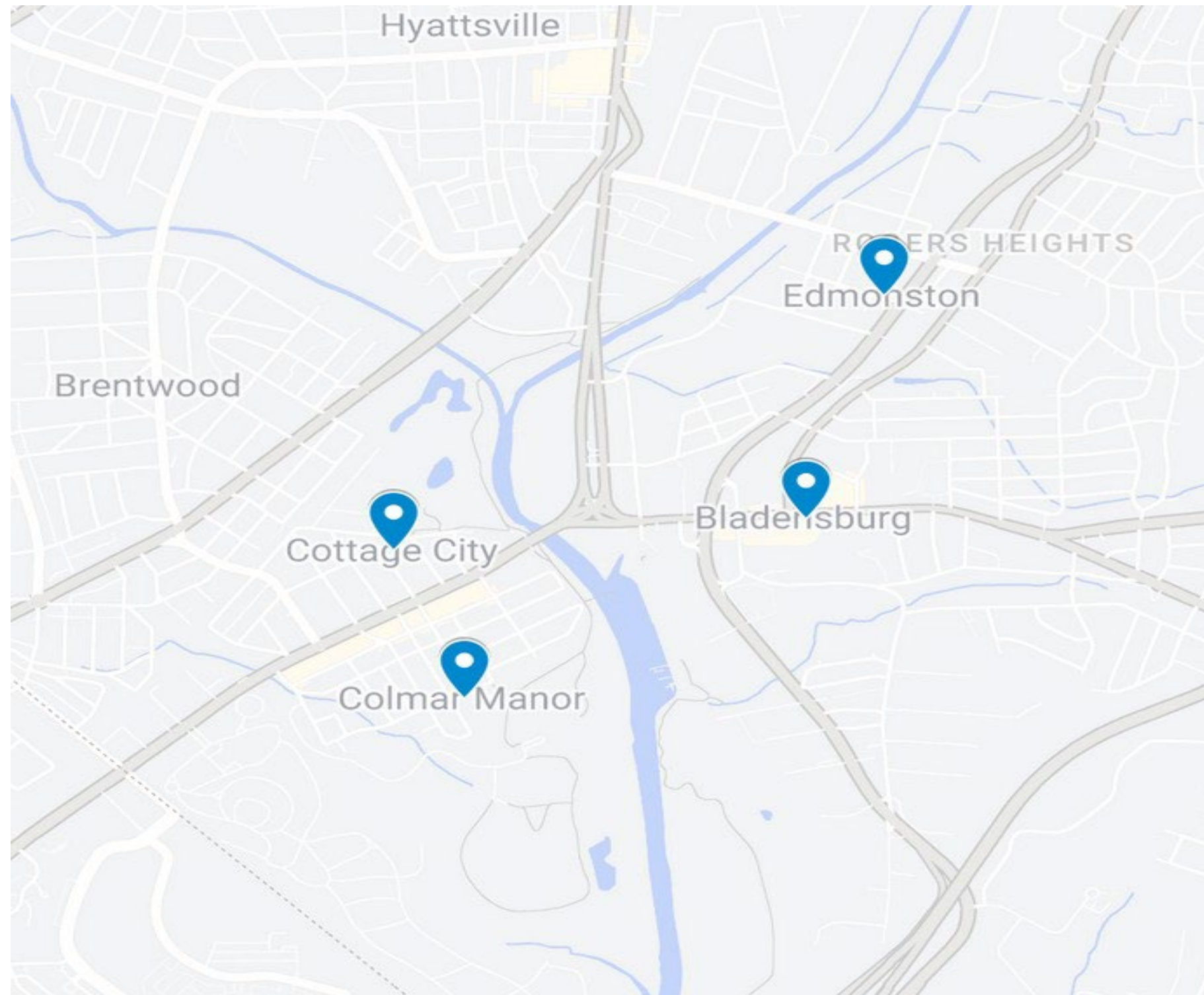


*live more, play more*  
pgparks.com

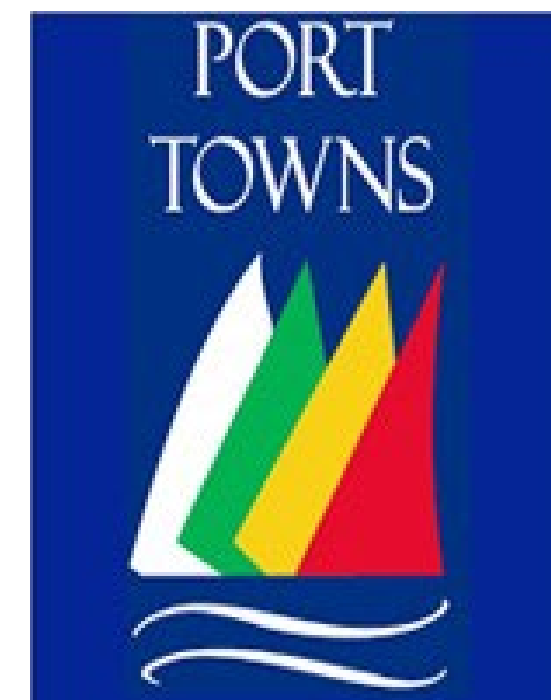




# The Port Towns



Bladensburg  
Colmar Manor  
Cottage City  
Edmonston



A large red chevron graphic pointing to the right, located on the left side of the slide.

# Research Questions

What barriers limit the accessibility of biking in the Port Towns?

How are development, gentrification, and biking perceived by residents in the Port Towns?

# Problem Definition

Barriers to equitable access to biking include

Lack of adequate bike infrastructure

Biking culture focused on intense cyclists

Missing connection between existing bike paths

Affordability



UNIVERSITY OF  
MARYLAND

**FEARLESSLY  
FORWARD**



# Methodologies

## Secondary Research

Current biking infrastructure

Connectivity

Safety

Bikeways and gentrification

Significance of community outreach





# Methodologies

## Primary Research

Interview with biking group member

Focus group with Port Towns residents

Interviews with elected officials

Interviews at the Bladensburg Waterfront Park



# Bikers' Perceptions

Want more  
connections to new  
development around  
them

Biking is a great  
way of  
disconnecting from  
normal life &  
getting exercise

Current  
infrastructure fails  
to connect  
communities & is  
not welcoming or  
safe



UNIVERSITY OF  
MARYLAND

**FEARLESSLY  
FORWARD**

Photo: M-NCPPC



# Residents' Perceptions



Increased  
vehicle  
traffic



Displacement  
from cost of  
housing



Diverse racial  
demographics



Unsafe biking  
conditions



UNIVERSITY OF  
MARYLAND

**FEARLESSLY  
FORWARD**



# Supplemental Interviews

**Hyattsville  
Resident**

Focus on Seniors &  
Biking culture

**Bladensburg  
Council Member**  
Feasibility

**Upper Marlboro  
Resident**

Gentrification &  
Socioeconomic  
change



UNIVERSITY OF  
MARYLAND

**FEARLESSLY  
FORWARD**



# Discussion



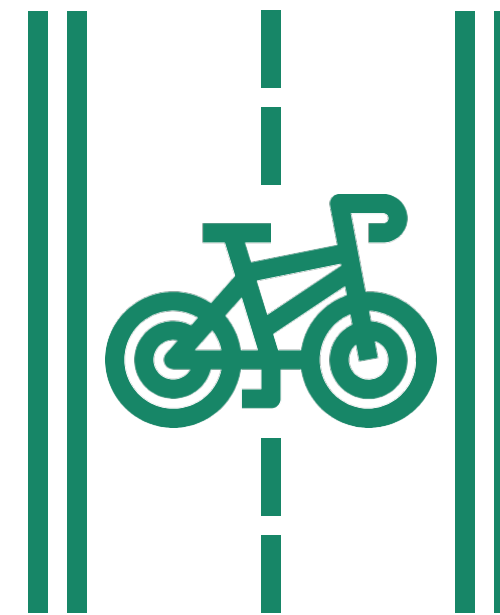
**Safety** is a  
major concern



Concern about  
**housing costs**  
impacting  
neighborhood  
demographics



Developments and  
neighborhoods are  
**disconnected**



Residents want more  
**bikeways & bike-  
conscious  
development**



UNIVERSITY OF  
MARYLAND

**FEARLESSLY  
FORWARD**





# Recommendations

Require Mixed-Use  
Developments



UNIVERSITY OF  
MARYLAND

**FEARLESSLY  
FORWARD**

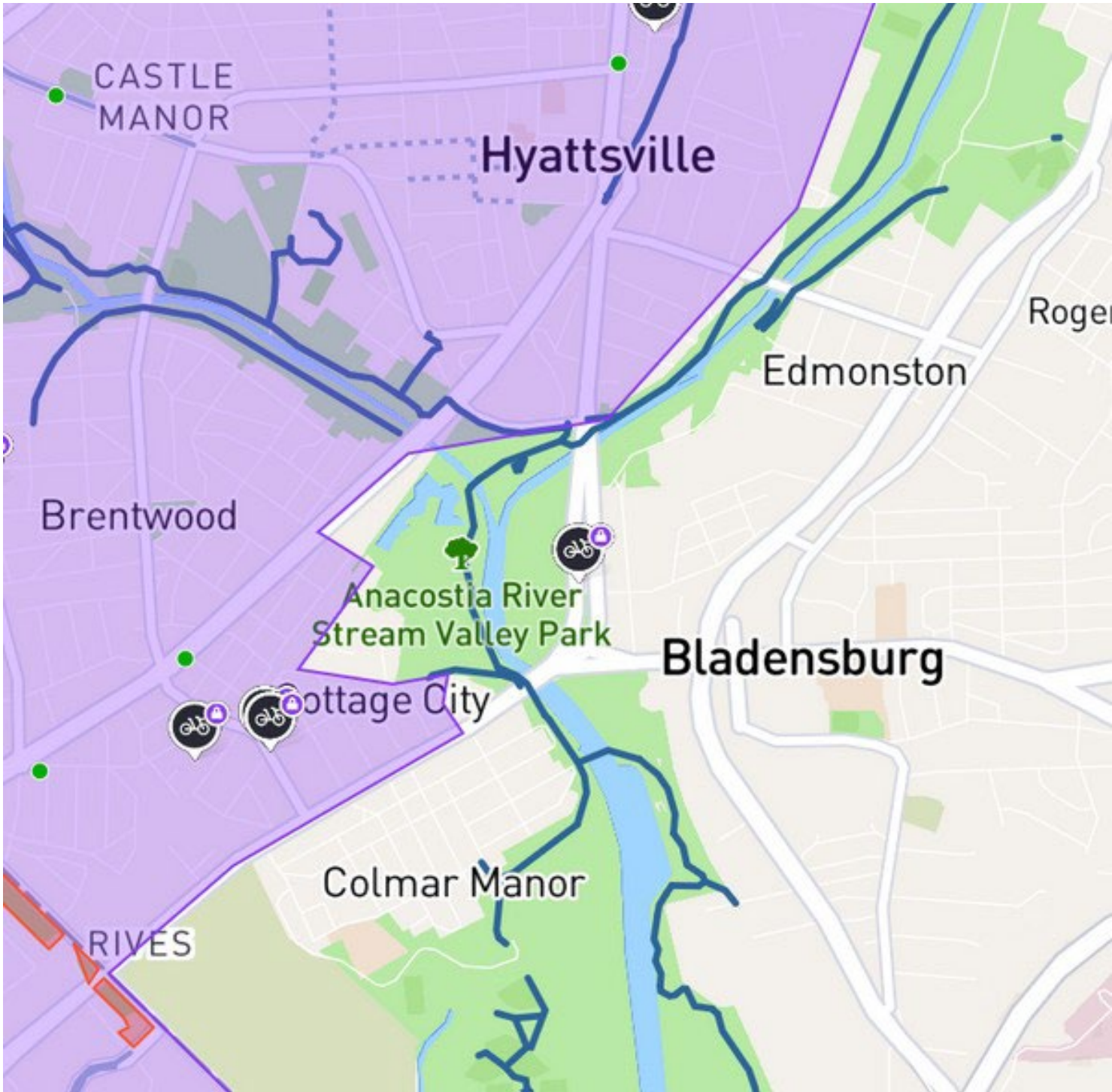
Photo: Prince George's County Economic Development Council





# Recommendations

Expand  
Capital Bikeshare



# Recommendations

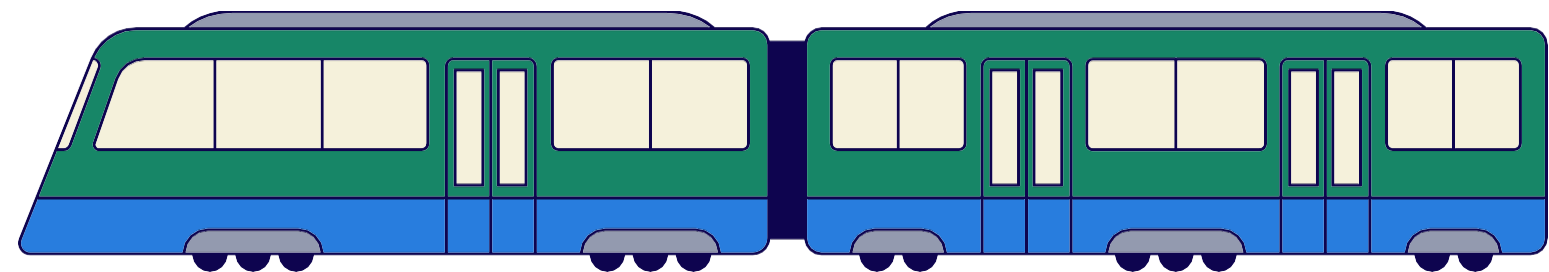
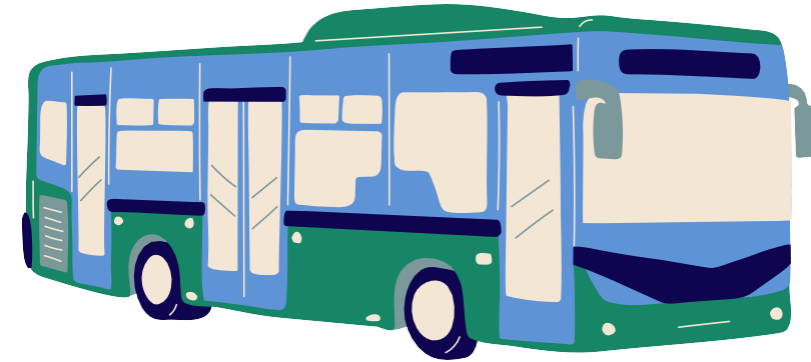
Implement Bike Safety  
courses  
at Prince George's County  
Public Schools





# Recommendations

Require Green Travel Plans  
for Major Employers



UNIVERSITY OF  
MARYLAND

**FEARLESSLY  
FORWARD**



# Recommendations

Pursue  
Safe Streets for All  
Grant

S | S  
— —  
4 | A



UNIVERSITY OF  
MARYLAND

**FEARLESSLY  
FORWARD**





# Questions?



UNIVERSITY OF  
MARYLAND

**FEARLESSLY  
FORWARD**

# References

Fowler, S. L, Berrigan, D., Pollack, K. M. (2017). Perceived barriers to bicycling in an urban U.S. environment, *Journal of Transport & Health*, Volume 6, 2017, Pages 474–480, ISSN 2214-1405. Retrieved from: <https://bit.ly/3Sihrul>

Geraghty, Anne B., et al. "Partnership Moves Community Toward Complete Streets." *American Journal of Preventive Medicine*, vol. 37, Dec. 2009, pp. S420–27. EBSCOhost, <https://doi-org.proxy-um.researchport.umd.edu/10.1016/j.amepre.2009.09.009>.

Gibson, T., A. (2015). The rise and fall of Adrian Fenty, Mayor-Triathlete: cycling, gentrification and class politics in Washington DC, *Leisure Studies*, 34:2, 230–249, DOI: 10.1080/02614367.2013.855940, Retrieved from: <https://www-tandfonline-com.proxy-um.researchport.umd.edu/action/showCitFormats?doi=10.1080%2F02614367.2013.855940>

Hoffmann, Melody, L.. (2016). *Bike Lanes Are White Lanes : Bicycle Advocacy and Urban Planning*. University of Nebraska Press, Retrieved from: <https://web-s-ebscohost-com.proxy-um.researchport.umd.edu/ehost/ebookviewer/ebook/bmxlYmtfXzEyMzk1NTBfX0FO0?sid=5fdb7a68-4aad-4386-9c13-8665e0e6b512@redis&vid=0&format=EB&rid=1>

Inclusive Biking. (2022). PeopleForBikes. <https://www.peopleforbikes.org/topics/inclusive-biking>

J. Ivey, personal communication, September 28, 2022

Lubitow, Amy, et al. "Sustainable Cycling For All? Race and Gender-Based Bicycling Inequalities in Portland, Oregon." *City & Community*, vol. 18, no. 4, Dec. 2019, pp. 1181–202. EBSCOhost, <https://doi-org.proxy-um.researchport.umd.edu/10.1111/cico.12470>.

Malmo-Laycock, Julia. "Bypassing the Bikelash: Strategies for addressing opposition to bicycle infrastructure projects in Washington, DC." (2017).



UNIVERSITY OF  
MARYLAND

**FEARLESSLY  
FORWARD**



The Maryland-National Capital Park and Planning Committee. (2009). Approved Port Towns Sector Plan and Sectional Map Amendment.

The Maryland-National Capital Park and Planning Committee. (2022). Trails. Prince George's County Department of Parks and Recreation.  
<https://www.pgpparks.com/3168/Trails>

Prince George's County Memorial Library System. (n.d.). Bladensburg Branch. Prince George's Memorial Library System Builds.  
<https://www.pgcmlls.info/Bladensburg>

Roberts, J. D., Tehrani, S. O., Isom Jr, R., Stone, E. A., Brachman, M. L., & Garcia, V. N. (2020). Case-comparison study protocol for gauging effects of neighborhood trends and sickness: examining the perceptions of transit-Induced gentrification in Prince George's County. *BMJ open*, 10(10), e039733.  
Retrieved from: <https://bmjopen.bmj.com/content/10/10/e039733.abstract>

Setterfield, Brett. "Bike Share Equity Strategies: Successes AND Failures." Planning, Public Policy and Management Department, University of Oregon, June 2016.  
Retrieved from: <http://hdl.handle.net/1794/19947>

Shinault, C. (2018). Brother's Keeper or Only Child? Black Middle-Class Responses to Residential Mobility Initiatives in Prince George's County, MD. Preprints 2018, 2018110118 (DOI: 10.20944/preprints201811.0118.v1). Retrieved from: <https://www.preprints.org/manuscript/201811.0118/v1>.

U.S. Census Bureau. (2022). Bladensburg town, Maryland. Retrieved from [https://data.census.gov/cedsci/profile/Bladensburg\\_town,\\_Maryland?g=16000000US2407850](https://data.census.gov/cedsci/profile/Bladensburg_town,_Maryland?g=16000000US2407850)

U.S. Census Bureau. (2022). Colmar Manor town, Maryland. Retrieved from [https://data.census.gov/cedsci/profile/Colmar\\_Manor\\_town,\\_Maryland?g=16000000US2418850](https://data.census.gov/cedsci/profile/Colmar_Manor_town,_Maryland?g=16000000US2418850)

U.S. Census Bureau. (2022). Cottage City town, Maryland. Retrieved from [https://data.census.gov/cedsci/profile/Cottage\\_City\\_town,\\_Maryland?g=16000000US2420050](https://data.census.gov/cedsci/profile/Cottage_City_town,_Maryland?g=16000000US2420050)

U.S. Census Bureau (2020). American Community Survey 5-year estimates. Retrieved from Census Reporter Profile page for Edmonston, MD  
<http://censusreporter.org/profiles/16000US2425425-edmonston-md/>

