

Pivoting Towards People & Puppets During the Pandemic

Drew Barker
Performing Arts Librarian



UNIVERSITY
LIBRARIES

Spatial Context:

We're a Performing Arts Library located within the Clarice Smith Performing Arts Center, which also contains the School of Music and the School of Theatre, Dance, & Performance Studies.



Edward MacDowell

(1860-1908)

American composer & pianist

But when we re-opened in August 2021...



Photo from the Special Collections in Performing Arts, UMD.

We wanted to re-open our library with our community in mind.

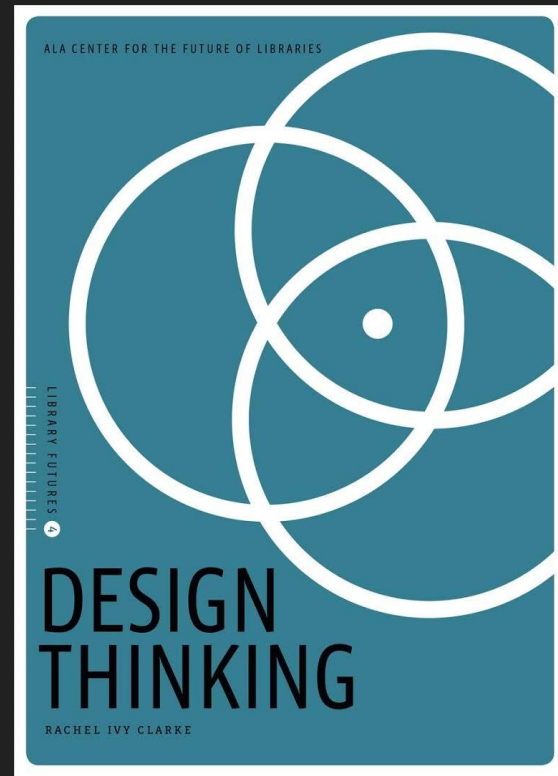
We were guided by the following questions:

- How can we reconnect with our community while acknowledging not only *what* we missed, but also *who* we missed?
- How can we engage our community & give them an opportunity to reflect on 2020 & 2021?
- How can we re-imagine our exhibit gallery to address these questions?

Shout-out to Rachel Ivy Clarke & Design Thinking

Design Thinking:

- Addresses problems that need a creative solution
- Takes a human-centered approach
- Consists of empathetic discovery, idea generation, & creation (p. 13)

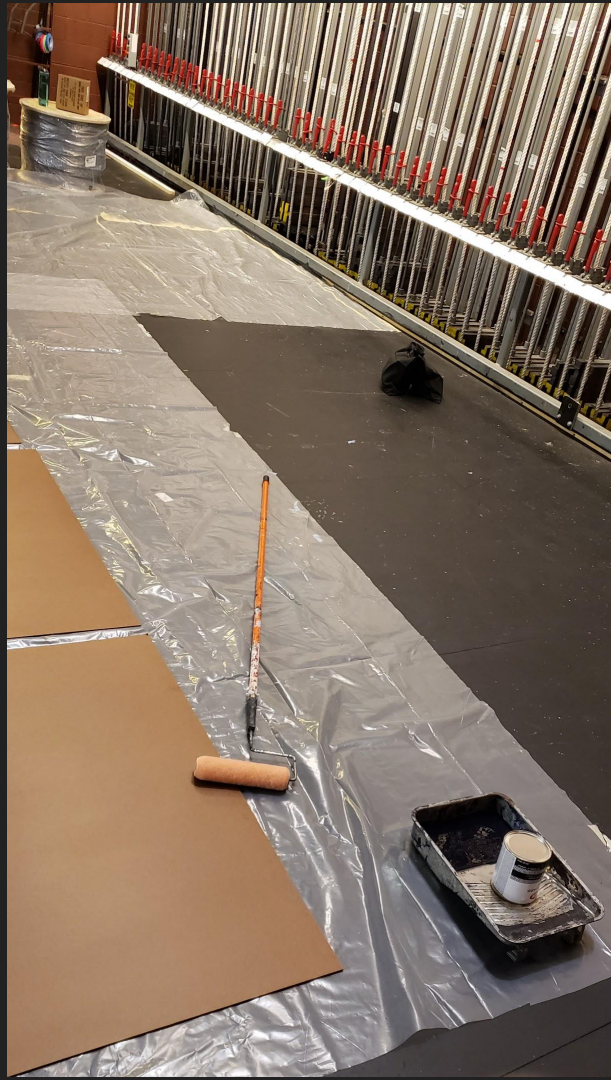


Fall 2021 Exhibit: “Remembrance & Resilience”

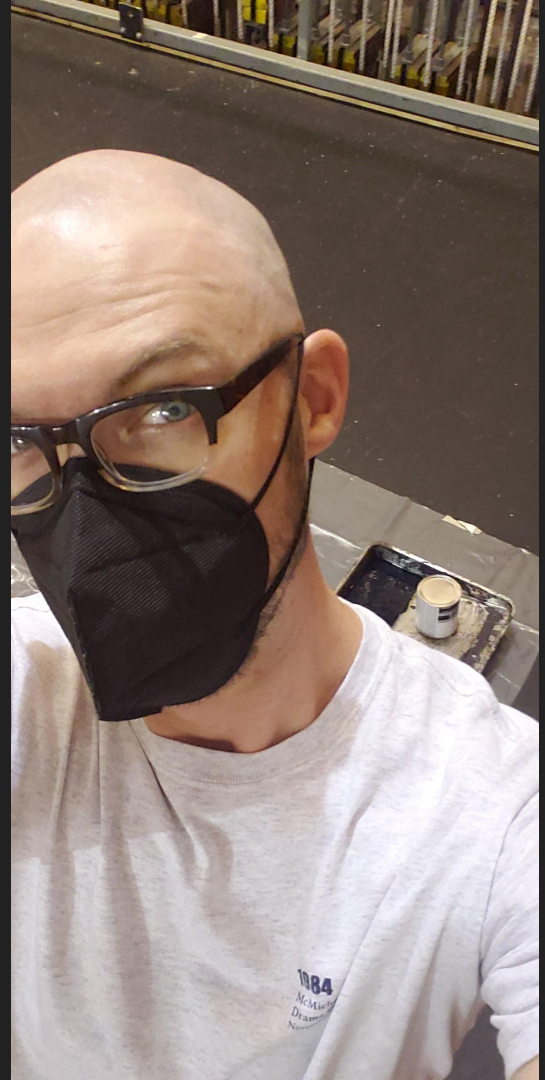
3 Main Components of the Exhibit:

- 2 paintings
- Blackboard wall with colored chalk
- Images of work submitted by performing arts students, faculty, & staff

**Black Art: In the Absence of Light (HBO, 2021)*



As a liaison that enjoys robust relationships as an embedded librarian, I took advantage of theatre facilities in the late summer of 2021 to paint and install the blackboard panels with assistance from staff.



What did you miss while away?

Playing
Music
Friends

school
feeling truly energized

Hugs

human
interaction

@erasableinc



Travel

Chalk

SMILES



Yall
Erasable
Inc

TENDIES

Change
togetherness

LIVE MUSIC

purpose!

having
a purpose

Friends

card games

friends

community

VIVO!

in-person
theater!

MY MOM
LIVE + dad
PERFORMANCE

LIDL

YUMMY

food +
OTHER PEOPLE

Music

I SECOND
THIS

TERP

Prof. Ray
Nitzberg

Music

Performance

Dancing

finding
outmates

CAMPUS

Brunch
w/ FRIENDS

the music
longue

Friends from
Proximity

Freedom

Philly

card games

friends

community

VIVO!

in-person
theater!

Performing
independence

Testudo



armor

WORK

hugs

Working

in

MDPA

Spontaneity!

concerts

Stamp
McDonalds

Working

in

MDPA

Spontaneity!

concerts

my friends



my friends

my friends

my friends

with
ENDS!!



Stamp
McDonalds

Working

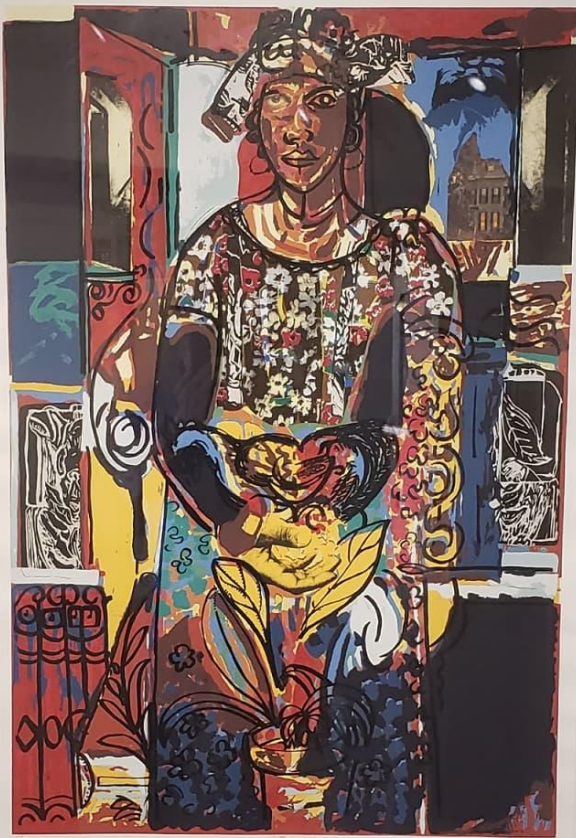
in

MDPA

Spontaneity!

concerts

my friends



**Woman in
Interior**

(2008)

David Driskell



Photo by Frank Stewart, www.portlandmuseum.org/driskell



What did you miss while away?

[illegible]

seeing friends ♡ Senior year

(in person)

In person Clarinet Lessons 😊

Face-to-face Interaction

Remembrance & Resilience

This exhibit memorializes those we lost & shows the creative work done by performing arts students, faculty, & staff while most of us were away from campus during the first year and a half of the pandemic (March 2020 - August 2021).

Curator:	Drew Barker Performing Arts Librarian
Driskell Center Collaborators:	Dorit Yaron & Ty Boland-Reeves (intern)
Concept Execution:	Bill Brandwein
Special Thanks:	Steve Henry, John Davis, Dorit Yaron, & the Driskell Center

Funding for the fabrication of this exhibit was made possible with the support from the Michelle Smith Performing Arts Library Endowment.

University of Maryland
University Libraries





Re/LIVING
 choreographer: Gabriel Mata
 Costume Design: Stephanie Parks
 Lighting Design: Michael Winston
 Photography: Jacob Hughes



Members of Pressez Take On 2021

Top Left: Pressez photo booth behind the Clinica courtyard.
 0, 1, 2, 3, 4, 5, 6, 7, 8, 9, 10, 11, 12, 13, 14, 15, 16, 17, 18, 19, 20, 21, 22, 23, 24, 25, 26, 27, 28, 29, 30, 31, 32, 33, 34, 35, 36, 37, 38, 39, 40, 41, 42, 43, 44, 45, 46, 47, 48, 49, 50, 51, 52, 53, 54, 55, 56, 57, 58, 59, 60, 61, 62, 63, 64, 65, 66, 67, 68, 69, 70, 71, 72, 73, 74, 75, 76, 77, 78, 79, 80, 81, 82, 83, 84, 85, 86, 87, 88, 89, 90, 91, 92, 93, 94, 95, 96, 97, 98, 99, 100, 101, 102, 103, 104, 105, 106, 107, 108, 109, 110, 111, 112, 113, 114, 115, 116, 117, 118, 119, 120, 121, 122, 123, 124, 125, 126, 127, 128, 129, 130, 131, 132, 133, 134, 135, 136, 137, 138, 139, 140, 141, 142, 143, 144, 145, 146, 147, 148, 149, 150, 151, 152, 153, 154, 155, 156, 157, 158, 159, 160, 161, 162, 163, 164, 165, 166, 167, 168, 169, 170, 171, 172, 173, 174, 175, 176, 177, 178, 179, 180, 181, 182, 183, 184, 185, 186, 187, 188, 189, 190, 191, 192, 193, 194, 195, 196, 197, 198, 199, 200, 201, 202, 203, 204, 205, 206, 207, 208, 209, 210, 211, 212, 213, 214, 215, 216, 217, 218, 219, 220, 221, 222, 223, 224, 225, 226, 227, 228, 229, 230, 231, 232, 233, 234, 235, 236, 237, 238, 239, 240, 241, 242, 243, 244, 245, 246, 247, 248, 249, 250, 251, 252, 253, 254, 255, 256, 257, 258, 259, 260, 261, 262, 263, 264, 265, 266, 267, 268, 269, 270, 271, 272, 273, 274, 275, 276, 277, 278, 279, 280, 281, 282, 283, 284, 285, 286, 287, 288, 289, 290, 291, 292, 293, 294, 295, 296, 297, 298, 299, 300, 301, 302, 303, 304, 305, 306, 307, 308, 309, 310, 311, 312, 313, 314, 315, 316, 317, 318, 319, 320, 321, 322, 323, 324, 325, 326, 327, 328, 329, 330, 331, 332, 333, 334, 335, 336, 337, 338, 339, 340, 341, 342, 343, 344, 345, 346, 347, 348, 349, 350, 351, 352, 353, 354, 355, 356, 357, 358, 359, 360, 361, 362, 363, 364, 365, 366, 367, 368, 369, 370, 371, 372, 373, 374, 375, 376, 377, 378, 379, 380, 381, 382, 383, 384, 385, 386, 387, 388, 389, 390, 391, 392, 393, 394, 395, 396, 397, 398, 399, 400, 401, 402, 403, 404, 405, 406, 407, 408, 409, 410, 411, 412, 413, 414, 415, 416, 417, 418, 419, 420, 421, 422, 423, 424, 425, 426, 427, 428, 429, 430, 431, 432, 433, 434, 435, 436, 437, 438, 439, 440, 441, 442, 443, 444, 445, 446, 447, 448, 449, 450, 451, 452, 453, 454, 455, 456, 457, 458, 459, 460, 461, 462, 463, 464, 465, 466, 467, 468, 469, 470, 471, 472, 473, 474, 475, 476, 477, 478, 479, 480, 481, 482, 483, 484, 485, 486, 487, 488, 489, 490, 491, 492, 493, 494, 495, 496, 497, 498, 499, 500, 501, 502, 503, 504, 505, 506, 507, 508, 509, 510, 511, 512, 513, 514, 515, 516, 517, 518, 519, 520, 521, 522, 523, 524, 525, 526, 527, 528, 529, 530, 531, 532, 533, 534, 535, 536, 537, 538, 539, 540, 541, 542, 543, 544, 545, 546, 547, 548, 549, 550, 551, 552, 553, 554, 555, 556, 557, 558, 559, 560, 561, 562, 563, 564, 565, 566, 567, 568, 569, 570, 571, 572, 573, 574, 575, 576, 577, 578, 579, 580, 581, 582, 583, 584, 585, 586, 587, 588, 589, 590, 591, 592, 593, 594, 595, 596, 597, 598, 599, 600, 601, 602, 603, 604, 605, 606, 607, 608, 609, 610, 611, 612, 613, 614, 615, 616, 617, 618, 619, 620, 621, 622, 623, 624, 625, 626, 627, 628, 629, 630, 631, 632, 633, 634, 635, 636, 637, 638, 639, 640, 641, 642, 643, 644, 645, 646, 647, 648, 649, 650, 651, 652, 653, 654, 655, 656, 657, 658, 659, 660, 661, 662, 663, 664, 665, 666, 667, 668, 669, 670, 671, 672, 673, 674, 675, 676, 677, 678, 679, 680, 681, 682, 683, 684, 685, 686, 687, 688, 689, 690, 691, 692, 693, 694, 695, 696, 697, 698, 699, 700, 701, 702, 703, 704, 705, 706, 707, 708, 709, 710, 711, 712, 713, 714, 715, 716, 717, 718, 719, 720, 721, 722, 723, 724, 725, 726, 727, 728, 729, 730, 731, 732, 733, 734, 735, 736, 737, 738, 739, 740, 741, 742, 743, 744, 745, 746, 747, 748, 749, 750, 751, 752, 753, 754, 755, 756, 757, 758, 759, 760, 761, 762, 763, 764, 765, 766, 767, 768, 769, 770, 771, 772, 773, 774, 775, 776, 777, 778, 779, 780, 781, 782, 783, 784, 785, 786, 787, 788, 789, 790, 791, 792, 793, 794, 795, 796, 797, 798, 799, 800, 801, 802, 803, 804, 805, 806, 807, 808, 809, 810, 811, 812, 813, 814, 815, 816, 817, 818, 819, 820, 821, 822, 823, 824, 825, 826, 827, 828, 829, 830, 831, 832, 833, 834, 835, 836, 837, 838, 839, 840, 841, 842, 843, 844, 845, 846, 847, 848, 849, 850, 851, 852, 853, 854, 855, 856, 857, 858, 859, 860, 861, 862, 863, 864, 865, 866, 867, 868, 869, 870, 871, 872, 873, 874, 875, 876, 877, 878, 879, 880, 881, 882, 883, 884, 885, 886, 887, 888, 889, 890, 891, 892, 893, 894, 895, 896, 897, 898, 899, 900, 901, 902, 903, 904, 905, 906, 907, 908, 909, 910, 911, 912, 913, 914, 915, 916, 917, 918, 919, 920, 921, 922, 923, 924, 925, 926, 927, 928, 929, 930, 931, 932, 933, 934, 935, 936, 937, 938, 939, 940, 941, 942, 943, 944, 945, 946, 947, 948, 949, 950, 951, 952, 953, 954, 955, 956, 957, 958, 959, 960, 961, 962, 963, 964, 965, 966, 967, 968, 969, 970, 971, 972, 973, 974, 975, 976, 977, 978, 979, 980, 981, 982, 983, 984, 985, 986, 987, 988, 989, 990, 991, 992, 993, 994, 995, 996, 997, 998, 999, 1000



MOZART'S LA FINTA GIARDINIERA

Directed by: Corinne Hayes
 Costume Design by: Ashlynn Ludwig
 Wig Styling: Austin Blake Conlee and Stephanie Parks
 Photography by: Jacob Hughes
 Special thanks to the Clarice Costume Shop: Lisa Burgess, Susan Chiang,



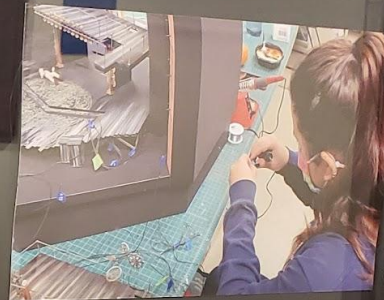
IMAGE: Newscorpnet_LiveRadio @Newscorpnet
 CAPTION: Live Radio broadcast of the show and early with social media and news from around the world of Theatre, Cinema, and Performance Science and Arts Center as part of Newscorpnet
 Feb 2020



8/11 10:00am
 Screen capture of ProTools mix for a multi-track recording of a live concert down to a stereo mix for radio & world-wide internet broadcast
 over www.khazimusic.com/jazz, June 2020



8/11 10:00am
 Screen capture of ProTools mix for a multi-track recording of a live concert down to a stereo mix for radio & world-wide internet broadcast
 over www.khazimusic.com/jazz, June 2020



THE TEMPEST

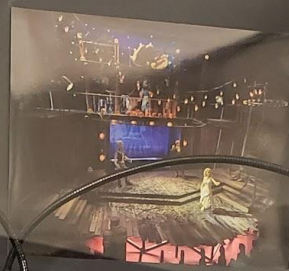
DIRECTED BY
AARON POMER & TELLER

SCENIC DESIGN BY
DANIEL CONWAY

SCALE MODELS BY
JACK HOLLER
SHARON BETTIE BALL
MICHAEL HILL
ALEXANDER HENRIKSEN
MICHAEL HENRIKSEN

LIGHTING CONTROL SOFTWARE BY
MICHAEL HENRIKSEN

In preparation for the upcoming remounting of Aaron Pomer and Teller's 'The Tempest' at Round House Theatre in collaboration with Fudge Theatre, the third year scenic design MFA students worked together to create a hyper detailed 1/2" - 1" scale model of Professor Daniel Conway's design for the show. The model was briefly staged in the winter of 2019, with the production's initial run scheduled for the following year, but it was postponed due to the shut down of University of Mississippi student activities in the global pandemic. Work on the model was resumed by the graduate students and the production is set to be staged in spring 2021.



What dialectical change happened here?

Thesis: Exhibit collections from our archives

Antithesis: Exhibit people from our community (their art/work, their words)

Synthesis: People contributed directly to the collective memory of performing arts in our building and/or from our community

Spring 2022 Exhibit: “The Art & Craft of Puppetry”

4 Components:

- Text panels
- Puppets
- Video
- Puppet Stage

We hoped for a joyful contrast.





LOCAL PUPPETRY COMPANIES

ALEX & OLMSTED

Our core belief as a company is to tell stories of magic and wonder. Our philosophy is rooted in the pursuit of Puppet Theater: the thrilling point at which an inanimate object comes to life (magic), and the greater phenomenon of an audience readily suspending their disbelief (wonder). Through puppetry, illusion, and innovative machines, we make theater that is physically expressive and we design virtuosic mechanical objects.

alexandolmsted.com

POINTLESS THEATRE

Dedicated to creating bold, visceral, and affordable spectacles that gleefully smash the traditional boundaries between puppetry, theatre, dance, music, and the visual arts. Through our work we excite a passion for adventurous art in the nation's capital and nurture a diverse, active, and inspired audience.

pointlesstheatre.com



THE PUPPET CO. AT GLEN ECHO PARK

Presents professionally produced puppet theater reflecting excellence in both performance and visual experience as a means to excite the public about the potential of puppetry while also inspiring a new generation of puppetry enthusiasts.

thepuppetco.org

WIT'S END PUPPETS

An innovative and experimental puppet theater in the national capital region, producing original work for adventurous audiences, collaborating with local partners to bring quality puppetry into contemporary performance and educating both children and adults about the craft of puppetry.

witsendpuppets.com

INTERNATIONAL PROGRAM FOR CREATIVE COLLABORATION & RESEARCH

FESTIVAL

APRIL 8-9, 2022

COLLABORATION THROUGH PUPPETRY
IN THE 21ST CENTURY

In varying degrees, I worked with a total of 10 different entities to make the exhibits happen, and they include the following:

- Students
- Faculty
- Clarice scenic & facilities staff
- The Smithsonian
- The Jim Henson Company

- Freelance graphic designer Kelly Andrews
- The Driskell Center
- The Center for Puppetry Arts
- PCI Graphics
- International Program for Creative Collaboration & Research in the School of Theatre, Dance, & Performance Studies

In Conclusion:

We welcomed the opportunity to re-imagine how we curate our gallery and how we schedule our exhibits.

Those choices created a spirit of innovation that we hope to carry forward as we create future exhibits in our library gallery.

Thanks! What questions do you have?