

PALS - SPD Meal Program

Members: Malik Downey,
Favion David, Lealena
Befikadu, Dylan Bipat, Nick
Bramble

Team Introduction

- Dylan Bipat: Project Lead
- Lealena Befikadu: Survey Maker
- Nick Bramble: Survey Maker
- Favion David: Survey Tester
- Malik Downey: Survey Tester

Client Introduction



live more, play more



- The Special Programs Division (SPD) within the Prince George's County Department of Parks and Recreation.
- This division coordinates programs for families throughout the county.
- Stephen Makle: Lead
- Anthony Nolan: Chief of Special Programs Division

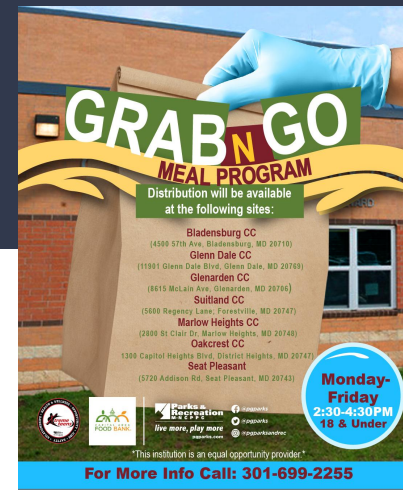
Client Background



- “Grab n Go”: distribute food for the youth M-F at 7 different sites
- Goal: to ensure that their food distribution is making a positive impact
- Have created surveys before, but were unsuccessful
- Want feedback and recommendations

Project Context

- SPD has no data tracking the effectiveness of their project
- Create surveys to collect data on those receiving food from SPD
 - The data collected will be focused on the youth benefitting from the program.
- Objective: provide the SPD with data and a new plan that will allow them to improve the food pickup programs



Project Requirements

- Original: devise an improved plan on the SPD recreational kits program
 - Devise an improved plan on the SPD meal program
- Create surveys
- Requirements changed often due to SPD program adjustments as well as COVID restrictions.

Challenges

- Gathering data from families recipients
 - Created two different surveys (one with incentive)
- COVID prevented the physical deployment of surveys
 - Discuss deployment with client
- Communication
 - Many people involved; made sure to include everyone

Deliverables

- Surveys:
 - [Anonymous Survey \(Youth\)](#)
 - [Email Survey \(Youth\)](#)
- Documentation
 - Background on surveys

Project Status

- Surveys completed
- Deployment of surveys confirmed
 - QR Codes that link to google forum
- Work on documentation
- Compile deliverables

Future Plans

- Collect and analyze data
 - Learn more about preferred food options among the recipients
 - Learn more about the customer service provided at the distribution centers
- Create plan to ensure each recipient of the meals are satisfied and improve distribution

Thank you!