

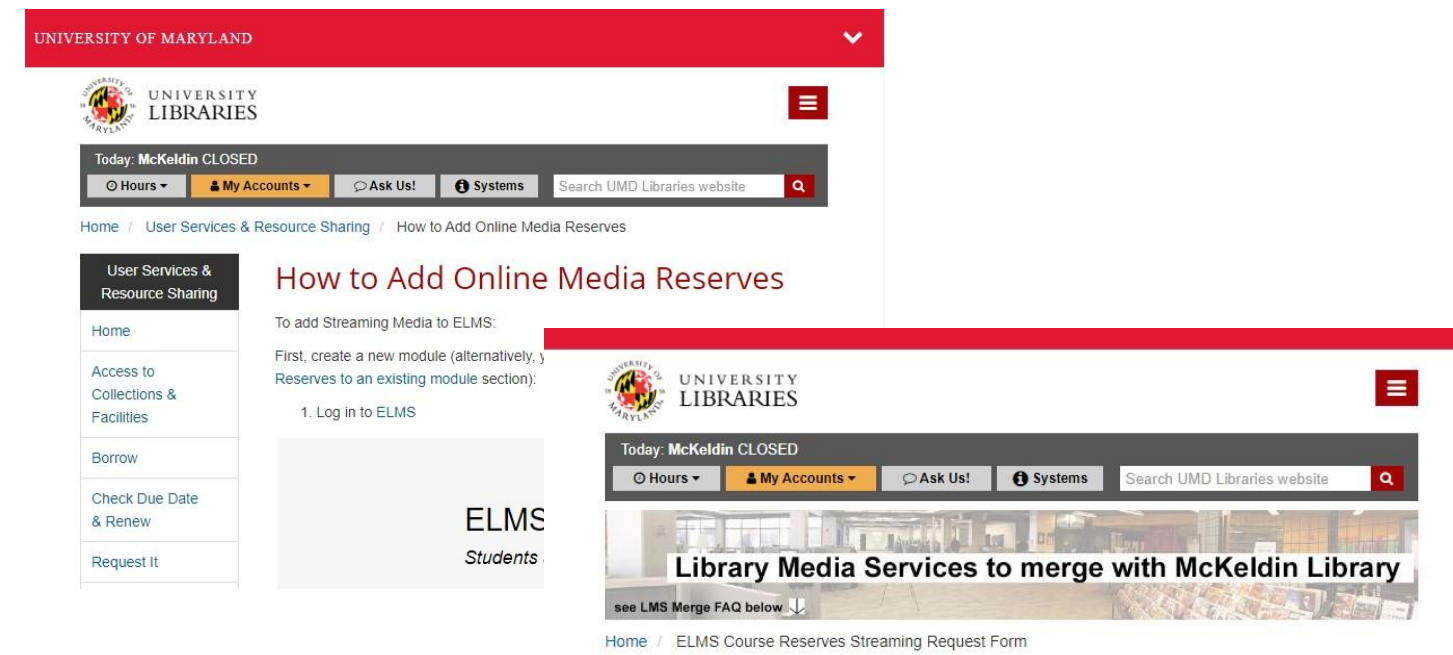
# Library Streaming Reserves: What's Happening Now, and What's Coming Next

Jenny Cotton and Brynne Norton

## Moving the Request Process into Course Reserves (Ares)

## Current User Experience

- Step-by-step instructions for requesting Streaming Media Reserves are available from the Course Reserves: Information for Instructors page on the Libraries' website.
- Instructors must create the Library Streaming Media Reserves module, and then add the Sharestream external tool. This is a 5-9 step process, and it **must** be done before we can provide any Streaming Media Reserves.
- Once instructors have created the module, they must then follow a link from the directions to a Wufoo form where they can place their requests. They can request up to five titles per Wufoo form, though they can also fill out the form as many times as needed.



### ELMS Course Reserves Streaming Request Form

Please use this form to request videos for streaming on your ELMS course site. Films may run for a single two-week period and can take up to ten days to become available after your request is received. You must create the Library Streaming Reserves tool in a module in Canvas before submitting a request. If you have questions please refer to our tutorial.

Your Name \*

## About the Service

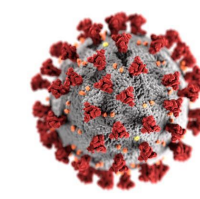
- In the Fall of 2019 the Streaming Media Reserve Service Moved from Library Media Services into the Resource Sharing and Reserves Unit at McKeldin Library.
- The service as a whole remained in tact as it integrated into the unit.
- As the integration steps on the service front have been finalized, there are many guidelines, procedures, and software components that need to be fully integrated.

For Instructors:

- Will allow a more integrated experience (all requesting done in the same place)
- Will allow instructors to track request status on their own
- Native streaming assets will not require a separate module activation

For Staff:

- Will allow a more integrated workflow
- Eliminate the need for a Media Ordering dummy course
- Easier tracking
- Easier statistics collection

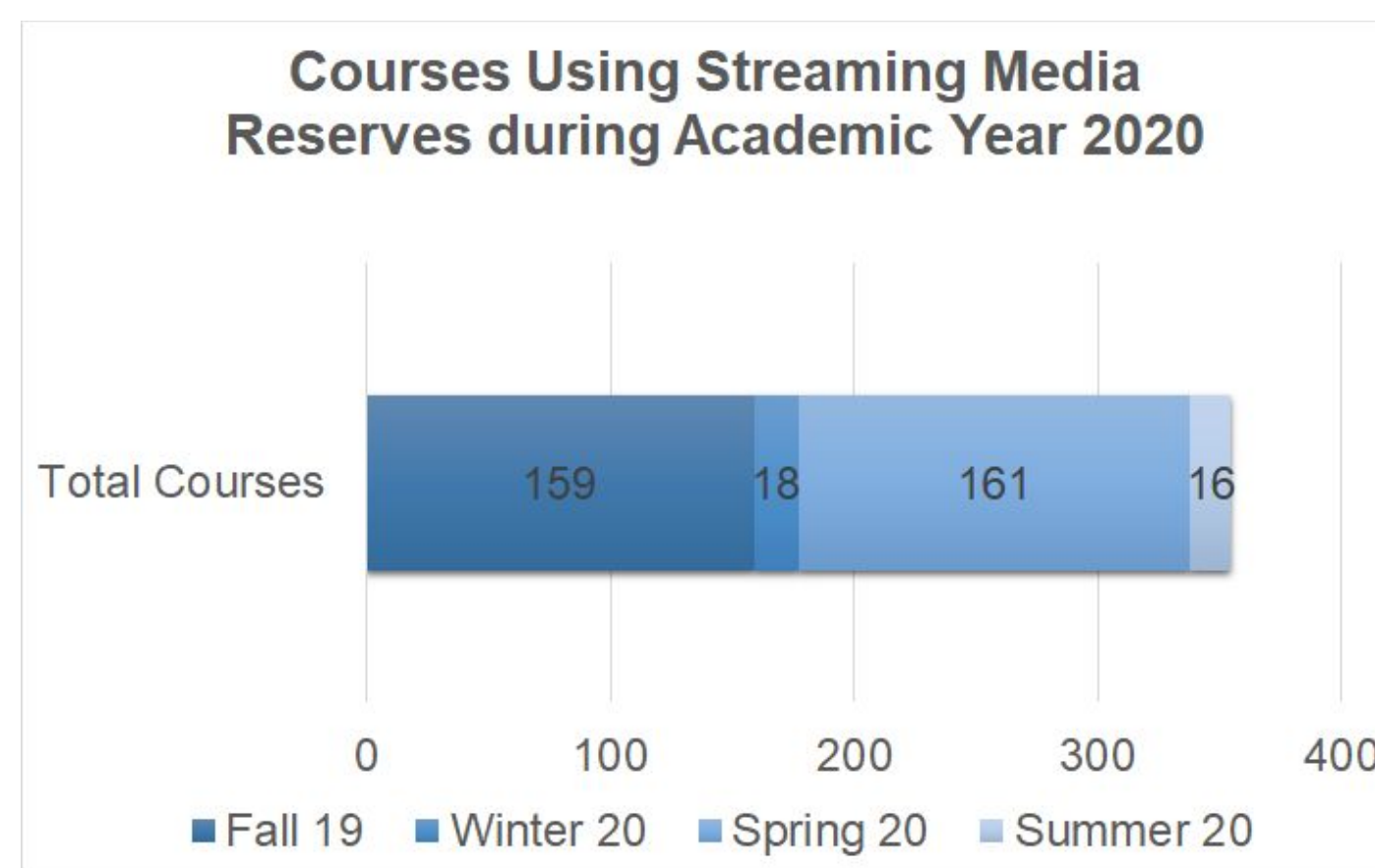


## COVID-19 Update

While the Libraries are closed to staff, we can only provide films that have already streamed in the recent past.

## Native Streaming Assets

In some cases, instructors want to use films that are already or exclusively available as streaming assets through a subscription service (e.g. Kanopy, Films on Demand, etc.). These video assets cannot be shared via Sharestream, and must be provided as a link through the Course Reserves module, not the Library Streaming Reserves module.



## Simplifying the Library Streaming Reserves Module Process?

We know that this is a pain point for a number of instructors, and while it is not something that we have direct control over, we are working with Academic Technology and Sharestream to see what we can do to make this easier.

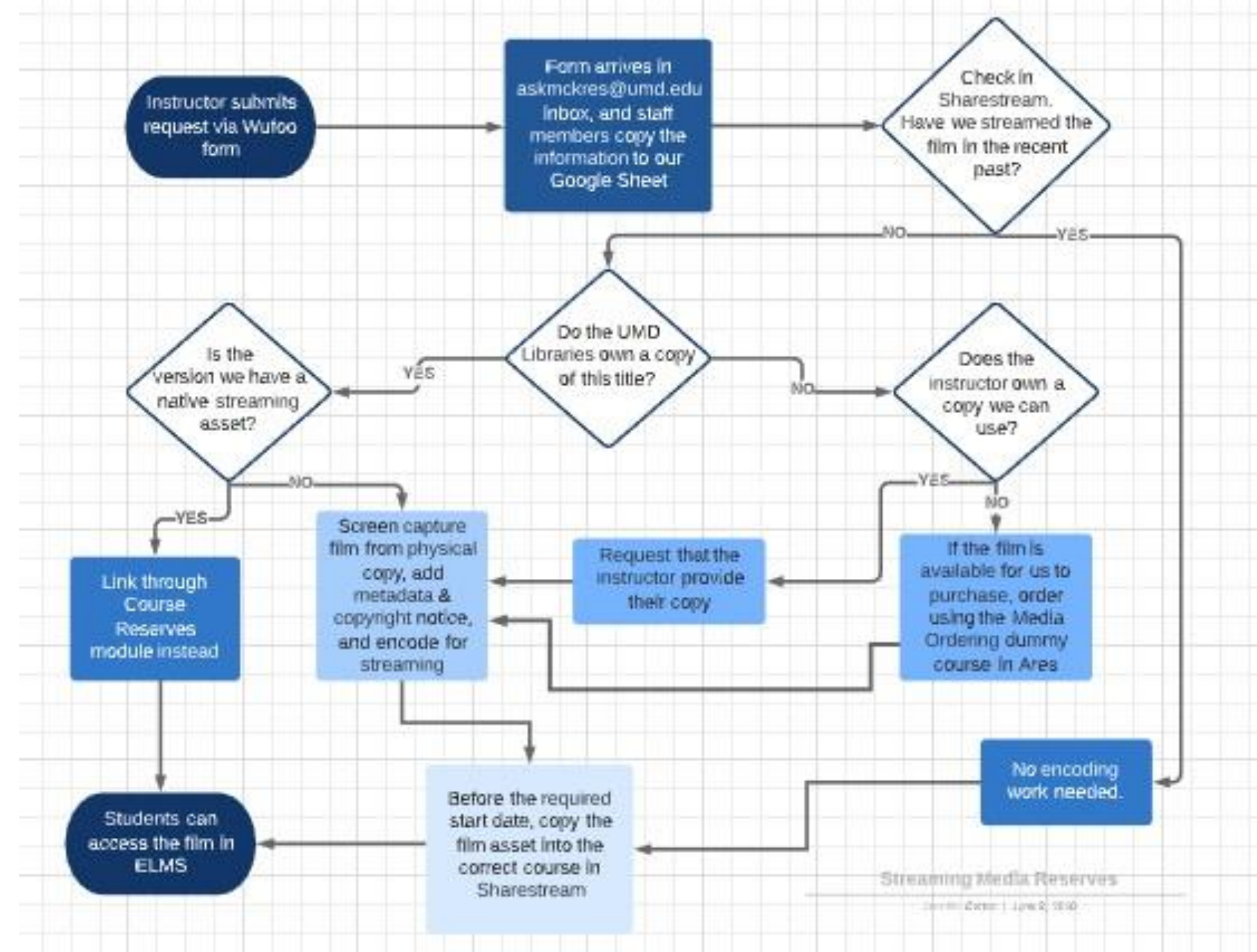
## Copyright Policy Changes

- When the service transitioned to the Resource Sharing & Reserves Unit, no documentation relating to the approved copyright guidelines were available.
- Rather than begin with nothing, the Copyright Guidelines for Course Reserves were redrafted to include streaming media.
- Procedures need to be changed to come in line with Copyright Law and the Digital Millennium Copyright Act including a renewed focus on screencapturing.
- These guidelines were reviewed and approved by the Office of the General Counsel in April, 2020.
- The guidelines can be viewed at: <https://www.lib.umd.edu/access/reserves-copyright>

Academic Year 2020 Course Codes weighted by frequency



## Current Workflow



UNIVERSITY LIBRARIES