

# Making Parks Attractive to New Generations: Montgomery County Scavenger Hunt Website

Tu Shi

Under the supervision of Professor Kathy Weaver

Course #: INFM 737

The University of Maryland – College Park

Spring 2018



PALS - Partnership for Action Learning in Sustainability  
An initiative of the National Center for Smart Growth

Gerrit Knaap, NCSG Executive Director

Uri Avin, PALS Director

## **Executive summary**

There are neglects on the ample park activity resources within Montgomery County, MD. As a result, park visitors are missing out the opportunities to discover and enjoy various points of interest in parks that would optimize their outdoor experiences. It is therefore, essential to examine what needs to take place for exposing the points of interest in parks to park visitors and encourage them to engage with the activities associated with those points of interest. Inspired by Pokémon GO, a game developed by Niantic uses the mobile device GPS to locate, capture, battle, and train virtual creatures; the Montgomery County Department of Parks worked with a graduate student from iSchool at University of Maryland, College Park in developing a GPS enabled mobile first gaming website for park visitors to locate, engage with points of interest and compete each other by score. The website strives to bring all points of interest together to park visitors with a common purpose: to fulfill their right to experience a physically active life.

## **System Introduction**

### **1. Map components**

There are four map components serve for visualization purpose. The four visualization components are 1) the virtual map, 2) the dynamic user's location pin on the map, 3) the points of interest pins on the map, 4) the compass for navigation.

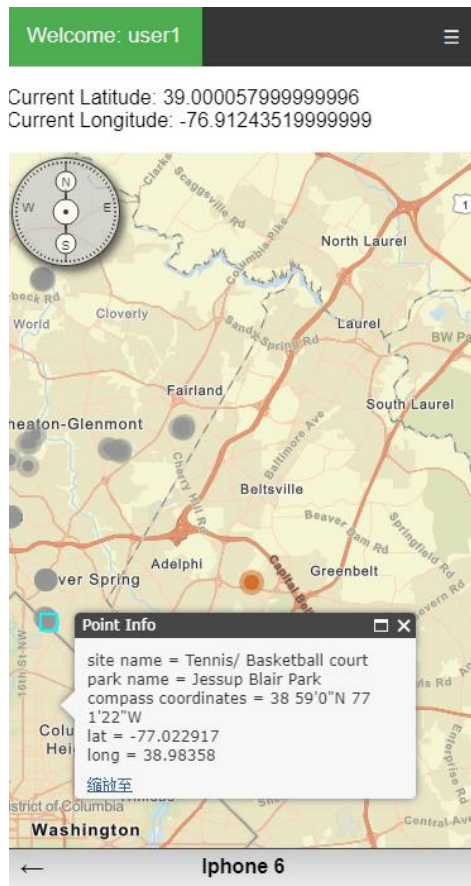
1) The virtual map is provided by Esri, an international supplier of geographic information system software, web GIS and geodatabase management applications. Like Google map, it shows streets, routes, buildings, etc.

2) The user's location pin locates user's updated current location, and it changes along with user's movement.

3) The points of interest pins on the map mark the location of the points of interest in different parks.

4) The compass is attached to the top left side of the map which provides additional navigation for park visitors.

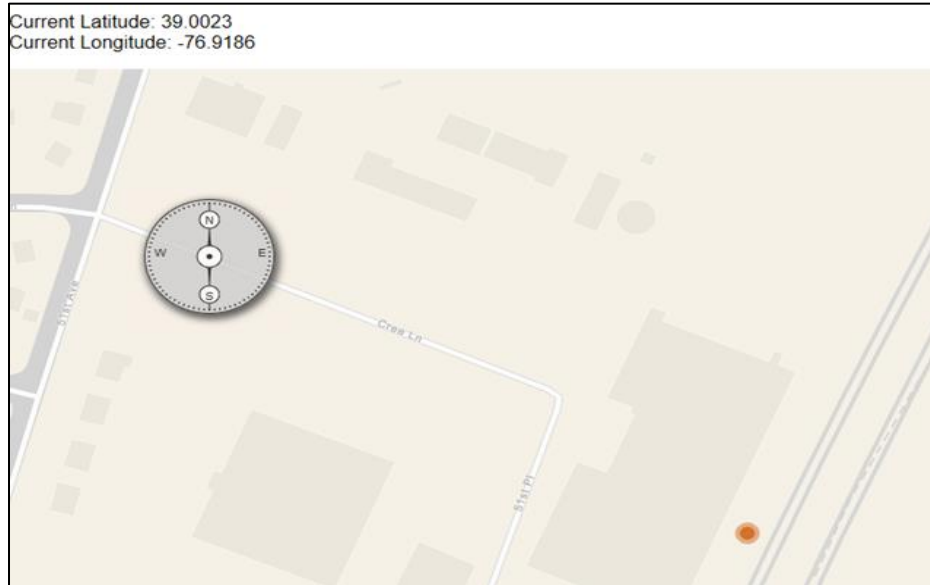
Also, there are two feature components. 1) One feature component is for the color changes of point of interest pins to distinguish the ones that the user has been to (in grey) and has not been to yet (in red). 2) The other feature is for displaying the detailed information of the point of interest when the user clicks on it.



*overall look of the map in mobile device*

## 2. User's geolocation

User's updated current geolocation is displayed on the top of the map. The website compares user's geolocation against to all points of interest's every three seconds. If any two of them match, it means the user has arrived at one of the points of interest. The website will 1) record this instance in the database, 2) display questions about the point of interest for the user to answer, 3) change the color of the point of interest on the map from red to grey and 4) update user's score due to a successful arrival.

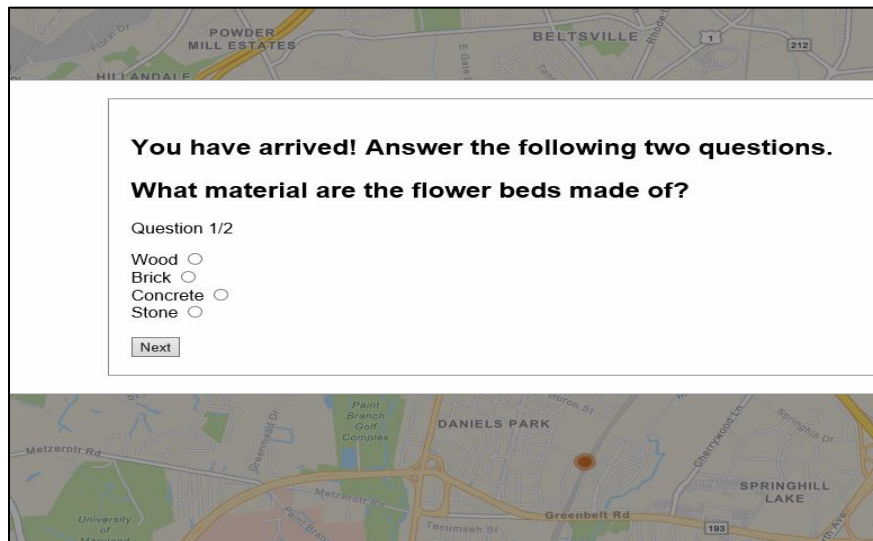


*displaying user's geolocation*

### 3. Questions & Answers

Users will answer two pop-up questions one by one upon arrival. The questions and answers are associated with the physical appearance of the points of interest or additional information gained at the points of interest.

Four answer choices are provided for each question and the user must choose the right answer for the first question to continue answering the second question. The database will record whether the user has successfully answered the two questions about the point of interest. If they do, the questions won't show up again as they revisit the same point of interest in future.



*question example*

#### **4. Score/Leaderboard/Rewards**

Upon each successful visit, the user will receive 1 point. Extra 3 points will be granted when finishing all the points of interest within a park. Extra 25 will be granted when finishing all parks in a division.

In sum, there are 92 points of interest, 19 parks, 2 divisions. Thus, the total score for a user can go up to 199.

The leaderboard will display the top 5 players' score and their username.

The reward system is three-level hierarchical. Completing all points of interest within a park will unlock the first level rewards, completing all the parks in a division will unlock the second level rewards, and completing all the divisions will unlock the final rewards.

#### **5. Log in/Sign up**

Users need to create and activate their account to play the game. Users' email address can be used for password retrieval. The system also records the date of account creation for user administration purposes.

Sign Up Log In

## Sign Up for Free

First Name \* Last Name \*

user1  
Username  
Username already exists!

Email Address \*

.....  
Set A Password

Confirm Password \*

**REGISTER**

- ✓ A lowercase letter
- ✓ A capital (uppercase) letter
- ✓ A number
- ✓ Minimum 8 characters

*log-in/sign-up example*

## 6. Checklist

A three-level hierarchical collapsible list is implemented to help users track their visits. The list contains all the points of interest categorized into their corresponding parks and parks are categorized into their corresponding divisions.

A visited point of interest will have a checked mark, and a not yet visited points of interest will have an unchecked mark. Fraction number is used to indicate how many points of interest in a park the user has visited versus the total number of points of interest in that particular park. The divisions also have a check or a unchecked mark to indicate user's accomplishment.

- North Division
  - 5 / 5 Agricultural History Farm Park
    - "A Dahlia Garden"
    - Shade Garden
    - Habitat garden
    - Antique farm equipment
    - Pig Pen
  - 5 / 5 Black Hill Regional Park
  - 3 / 3 Darnestown Heritage Park
  - 5 / 5 Dowden's Ordinary Special Park
  - 5 / 5 Germantown Town Center Urban Park
  - 5 / 5 Little Bennett Regional Park
  - 6 / 6 Olney Manor Recreational Park
  - 5 / 5 Rock Creek Regional Park
  - 5 / 5 South Germantown Recreational Park
  - 5 / 5 Woodlawn Manor Cultural Park
- South Division

*three-level collapsible list*

## Challenges/ Successes

### 1. Challenges

- Technology Implementation - choosing between MEAN Stack and HTML, CSS, JS, PHP, SQL in building the website.
- Multilevel hierarchical collapsible checklist- Multilevel logic involved.
- User Login/Sign up feature - Email activation & Password retrieval by emailing.

### 2. Successes

- Map Implementation - Choosing the desirable version of Esri map JavaScript API.
- Graphics Implementation - Color change of points of interest on the map.
- Recording players' visits (achievement) - Comparing players' geolocation against all the points of interest's and looping the process. Displaying the question and muting the displaying for a revisit.