

# Indicators of Neighborhood Distress

**Research Questions:**

Is there a geographic pattern of crimes in Howard County?  
Are these crimes clustered? Any hot spot?

**Data in Analysis:**

CDS (controlled dangerous substance) arrests  
Prostitution  
Robbery  
Data Source: Howard County

**Howard County Demographics**

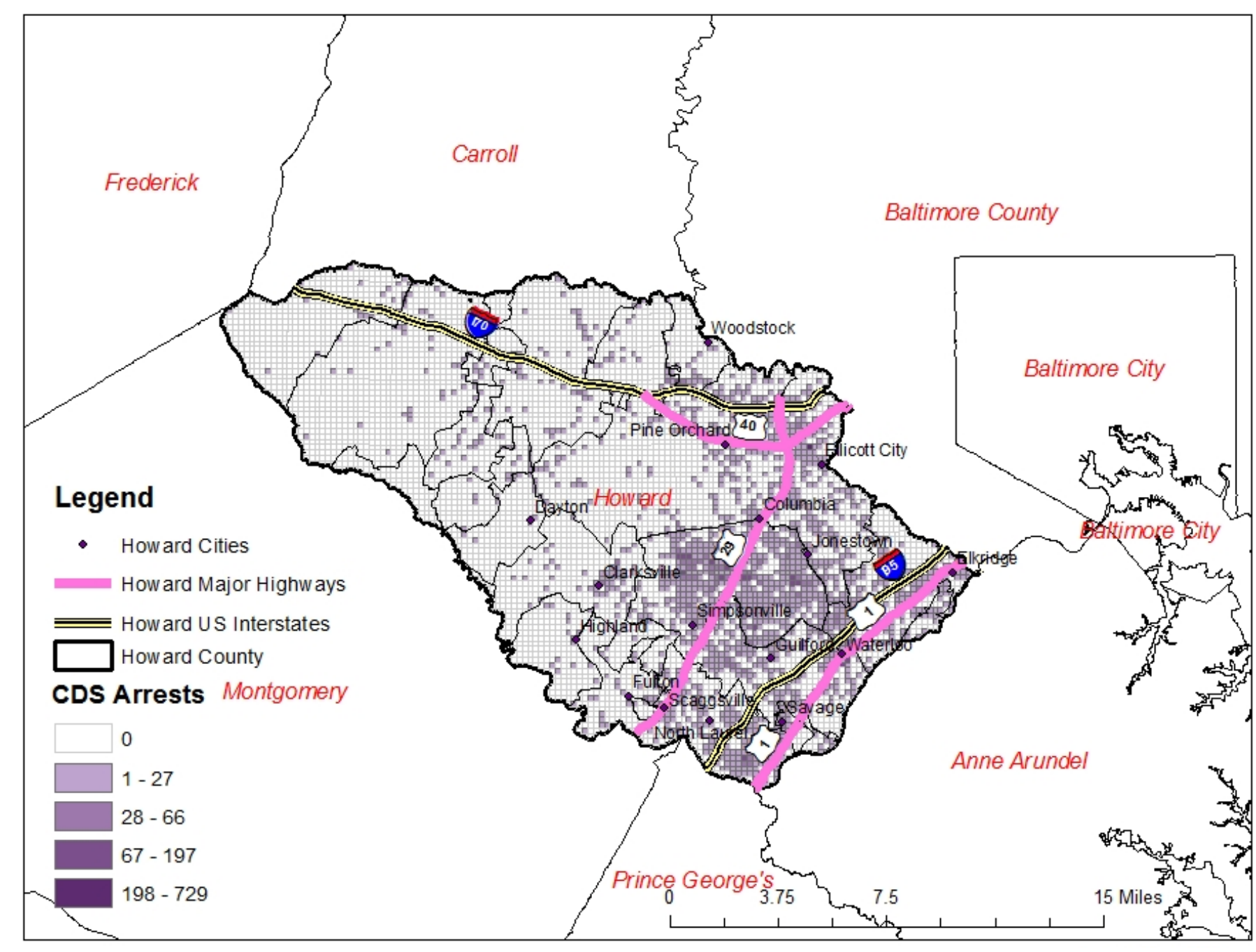
Population Estimate (2015): 313,414  
Owner-occupied housing unit rate (2010-2014): 73.3%  
Median Income: \$110,133  
Persons in Poverty- 6.1%  
Bachelor's Degree or Higher: 60.4%  
Source: Howard County Census Data (2016)

**Conclusion:** Most of CDS arrests and robberies occurred in eastern and southern areas of the Howard County and there is a hotspot of those incidents in cities, particularly around Columbia Town Center. More attentions should be given to Waterloo where there is a hotspot of prostitutions reported.

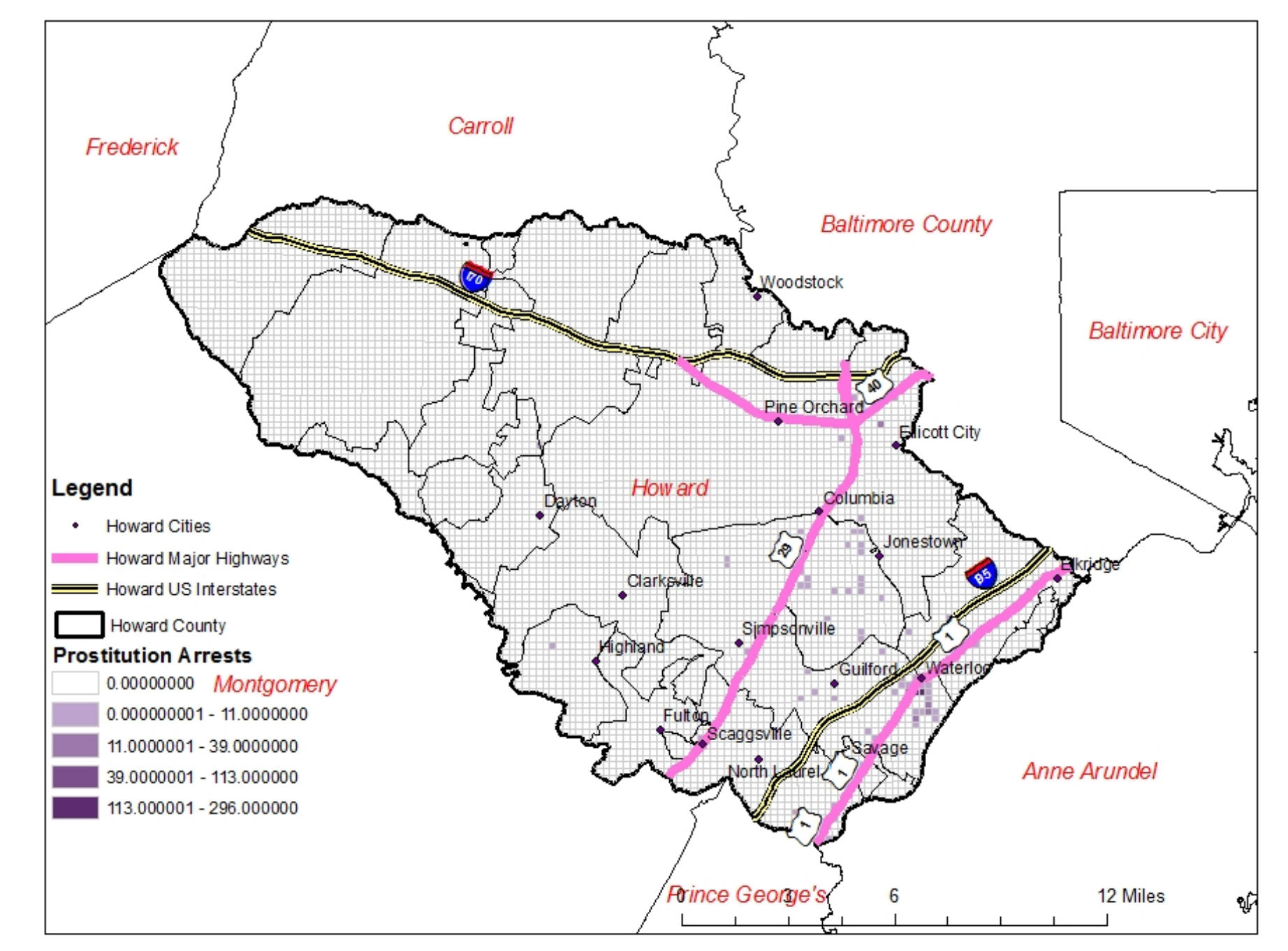
There are factors that affect these crimes, including density of population, low income and % of population needing government assistance. More research is needed to determine the exact causes of the geographic distribution of these crimes in Howard County.

Teh, B. Do Liquor Stores Increase Crime and Urban Decay? Evidence from Los Angeles.  
Wolfe, S. E., & Pyrooz, D. C. (2014). Rolling Back Prices and Raising Crime Rates? The Walmart Effect on Crime in the United States. British Journal of Criminology, 54(2), 199-221. doi:10.1093/bjc/azt071  
Howard County Census Data. (2016). Retrieved April 27, 2016.

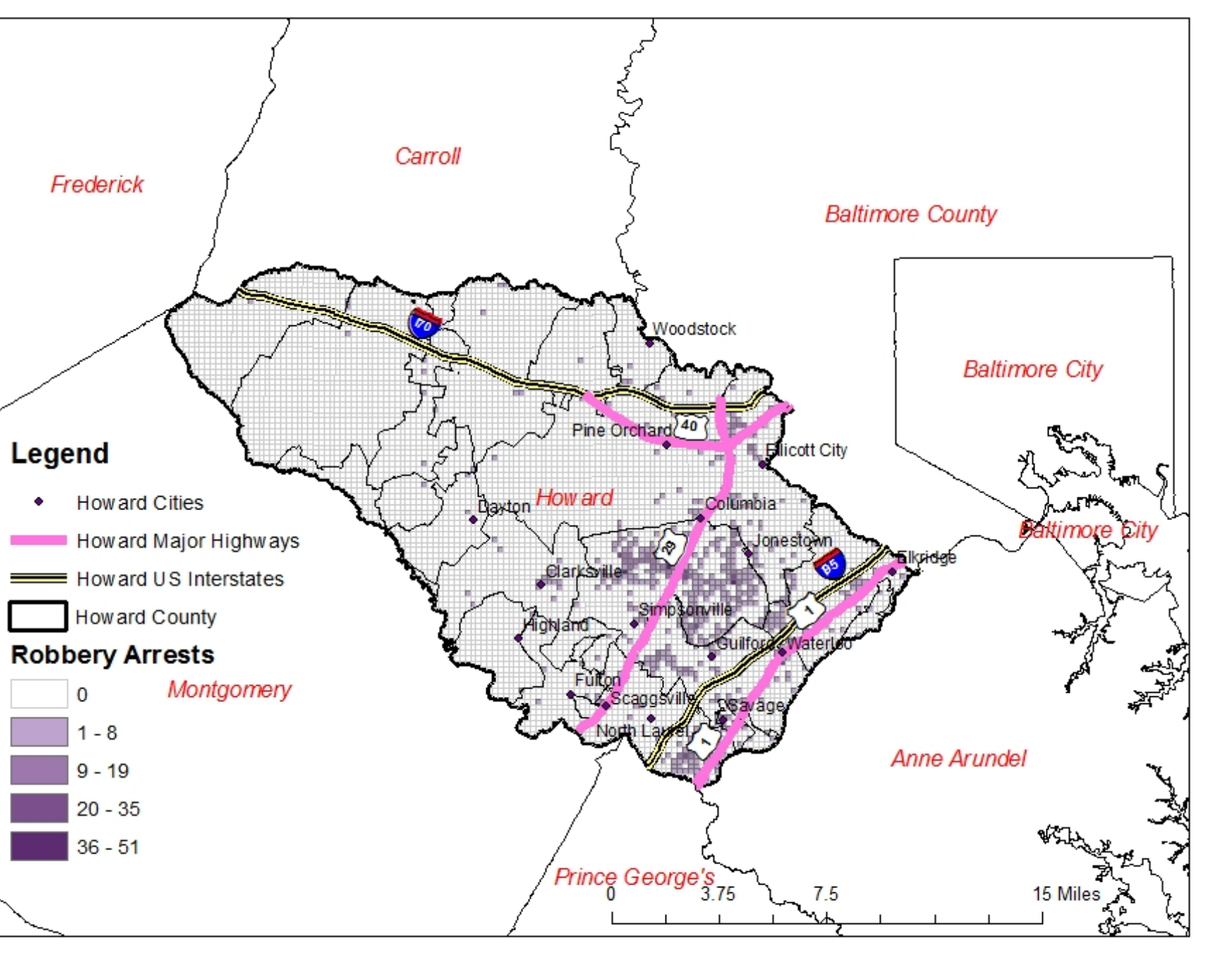
**CHOROPLETH MAP: CDS ARRESTS IN HOWARD COUNTY, 2005-2015**



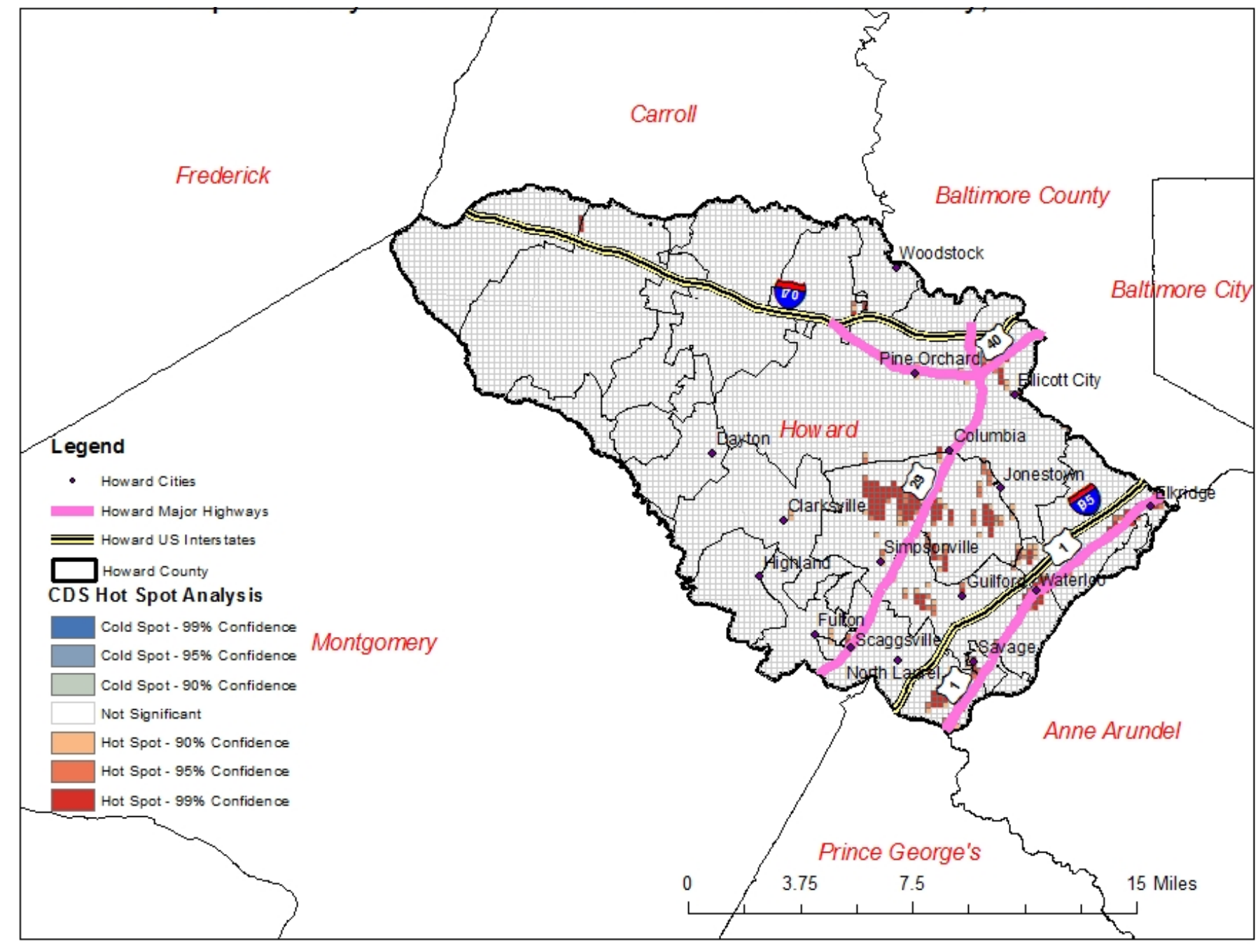
**CHOROPLETH MAP: PROSTITUTION IN HOWARD COUNTY, 2005-2015**



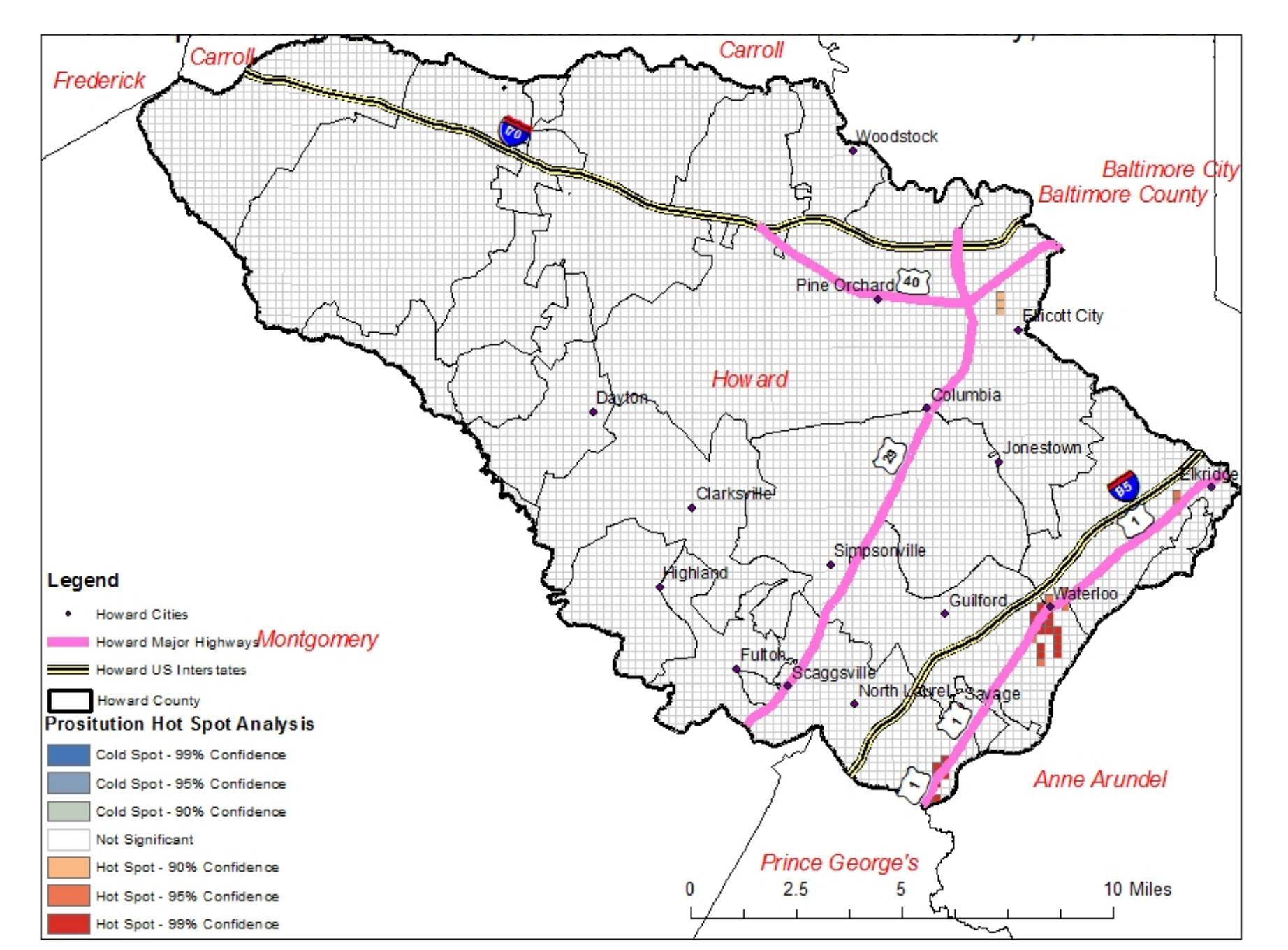
**CHOROPLETH MAP: ROBBERY IN HOWARD COUNTY, 2005-2015**



**HOT SPOT ANALYSIS: CDS ARRESTS IN HOWARD COUNTY, 2005-2015**



**HOT SPOT ANALYSIS: PROSTITUTION IN HOWARD COUNTY, 2005-2015**



**HOT SPOT ANALYSIS: ROBBERY IN HOWARD COUNTY, 2005-2015**

