



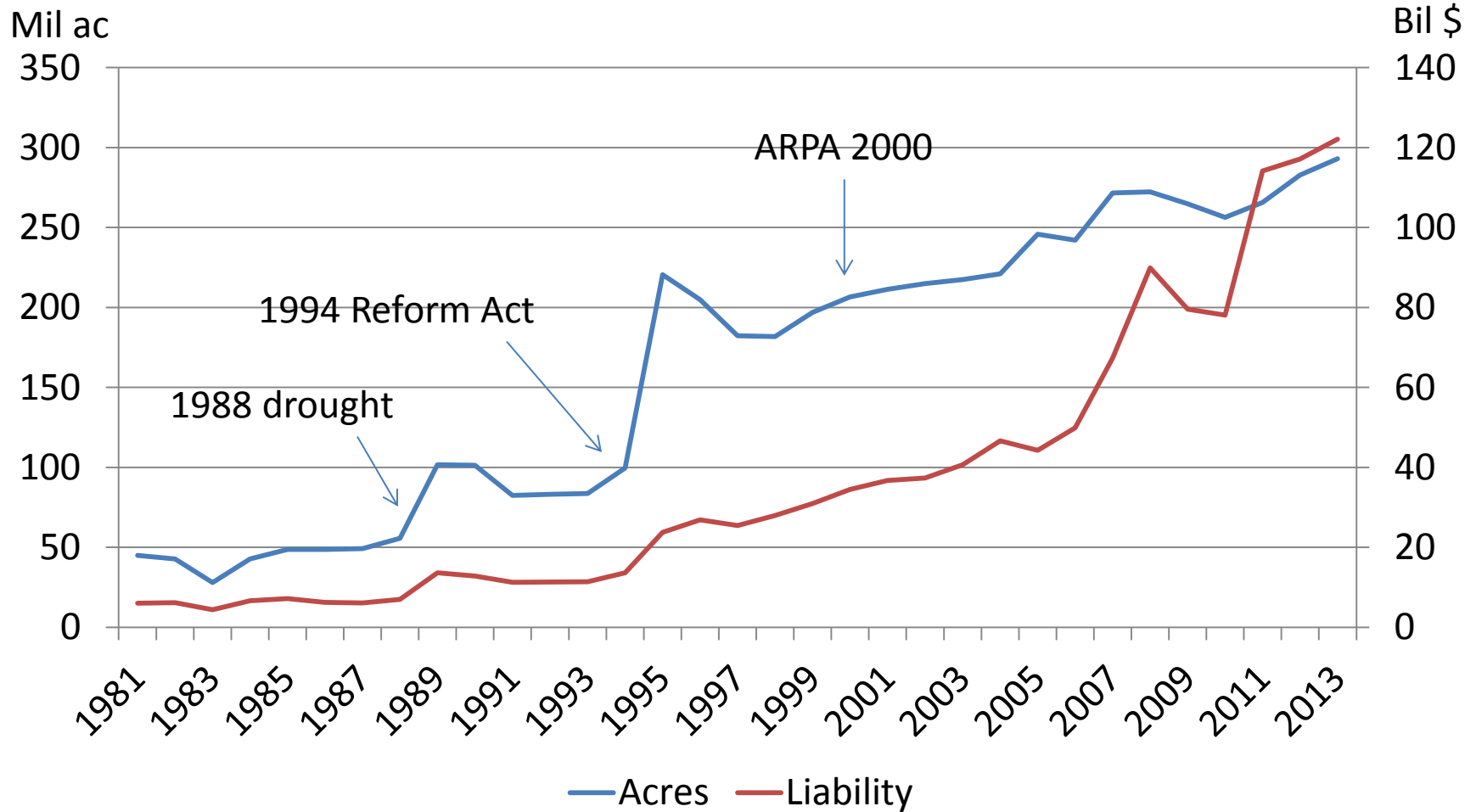
Federal Crop Insurance Update

Joe Glauber

Chief Economist, USDA

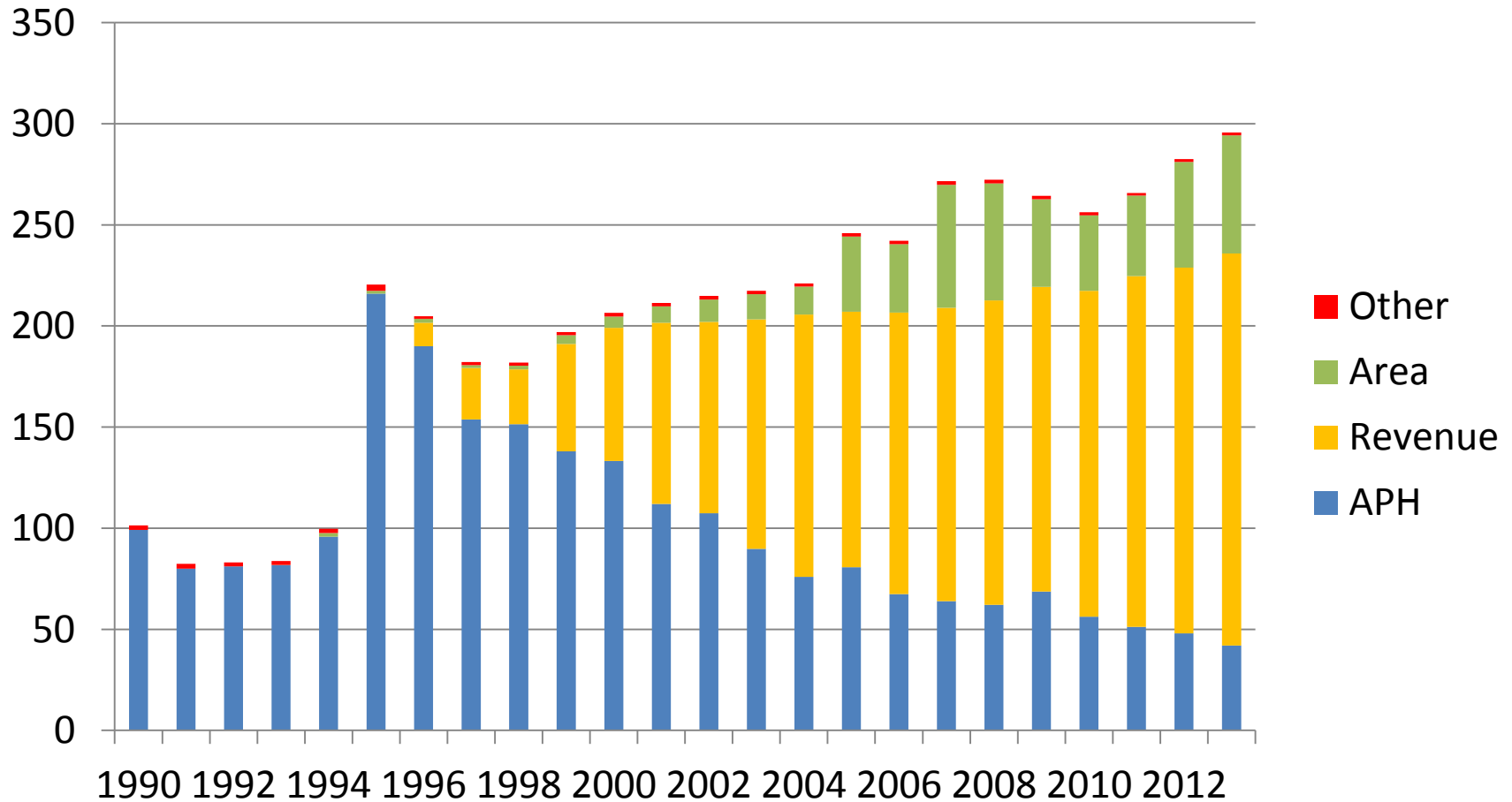
9 September 2014

Growth in the US crop insurance program

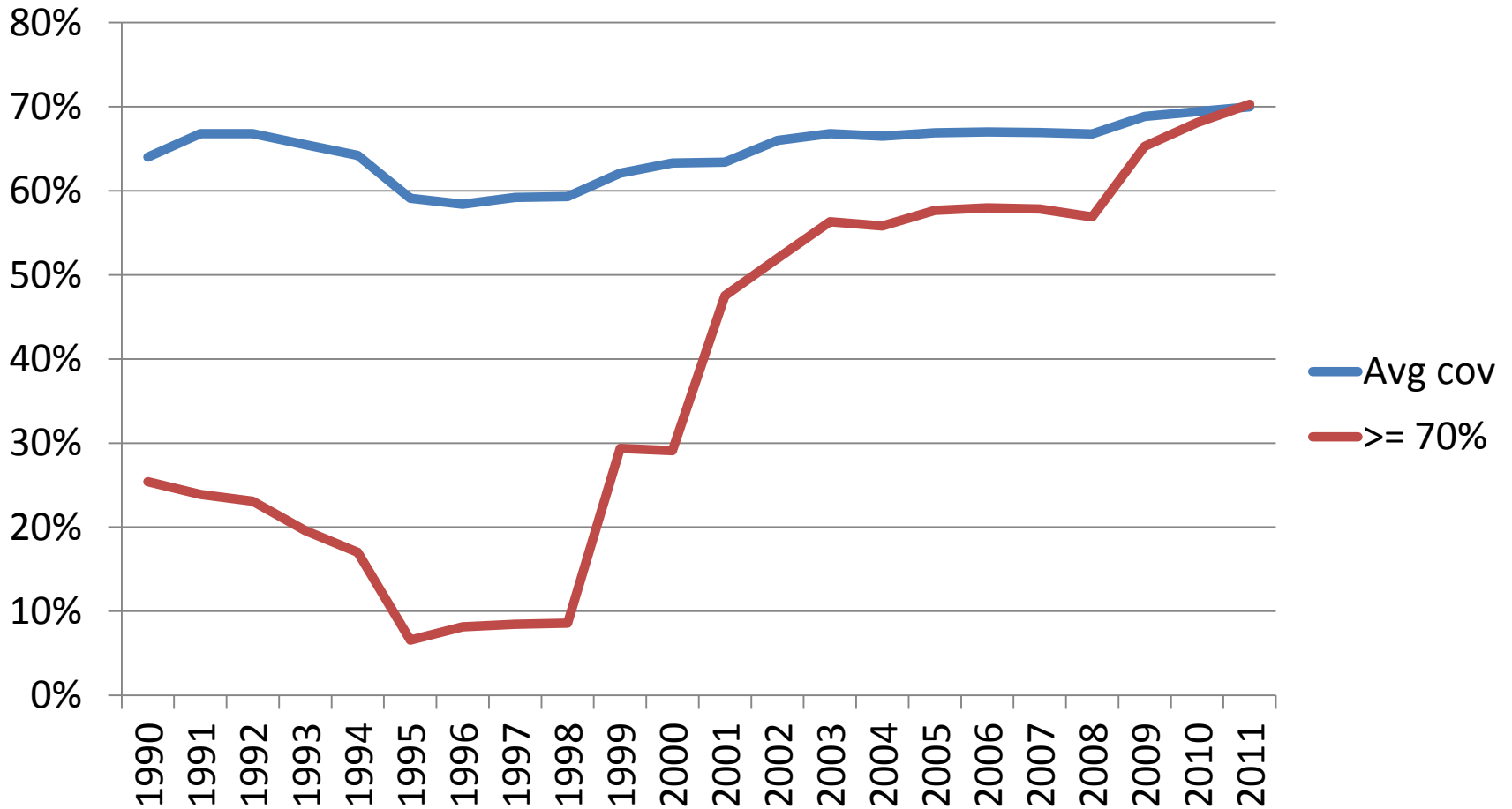


Growth in revenue insurance and area plans

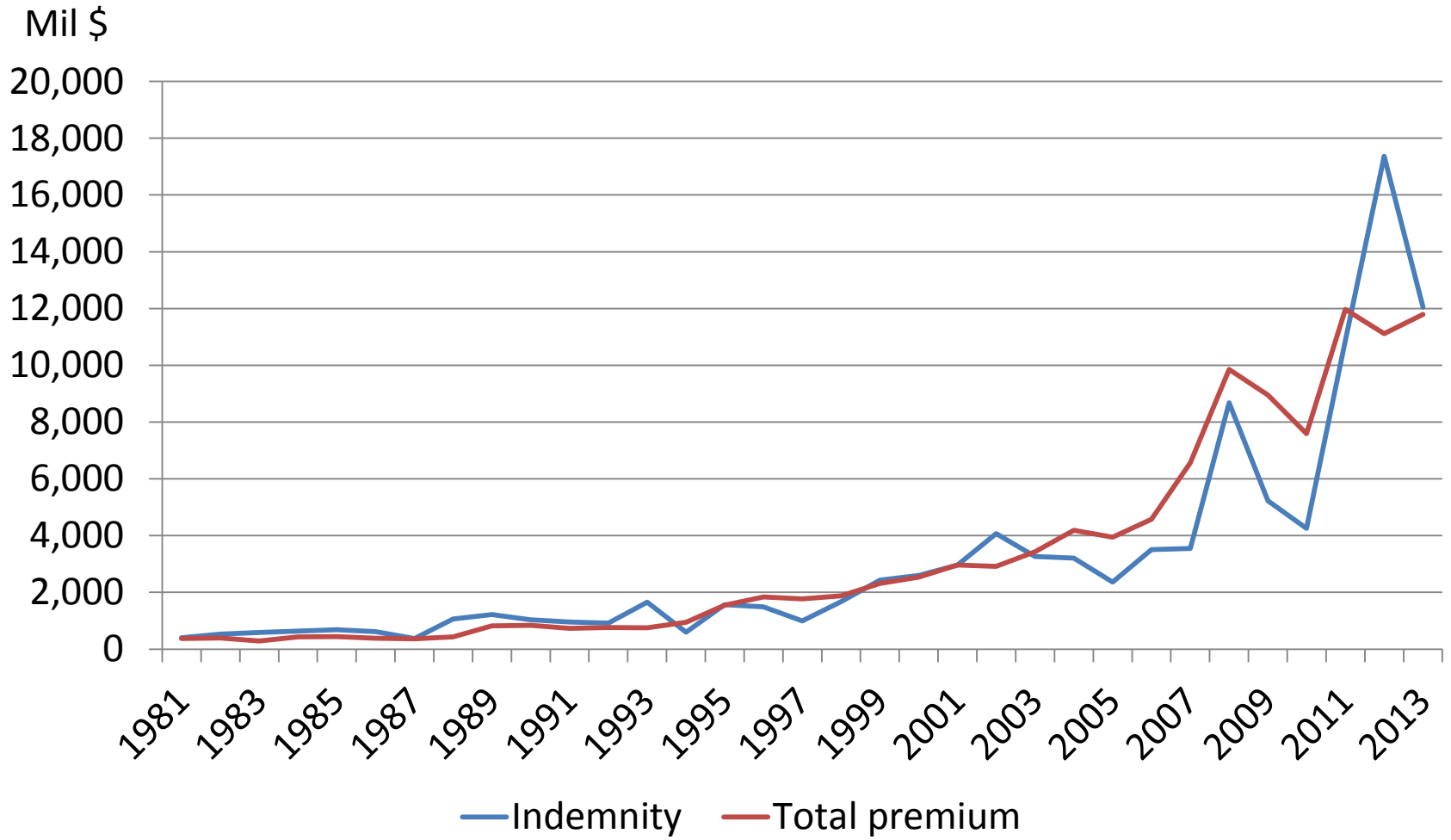
Mil acres



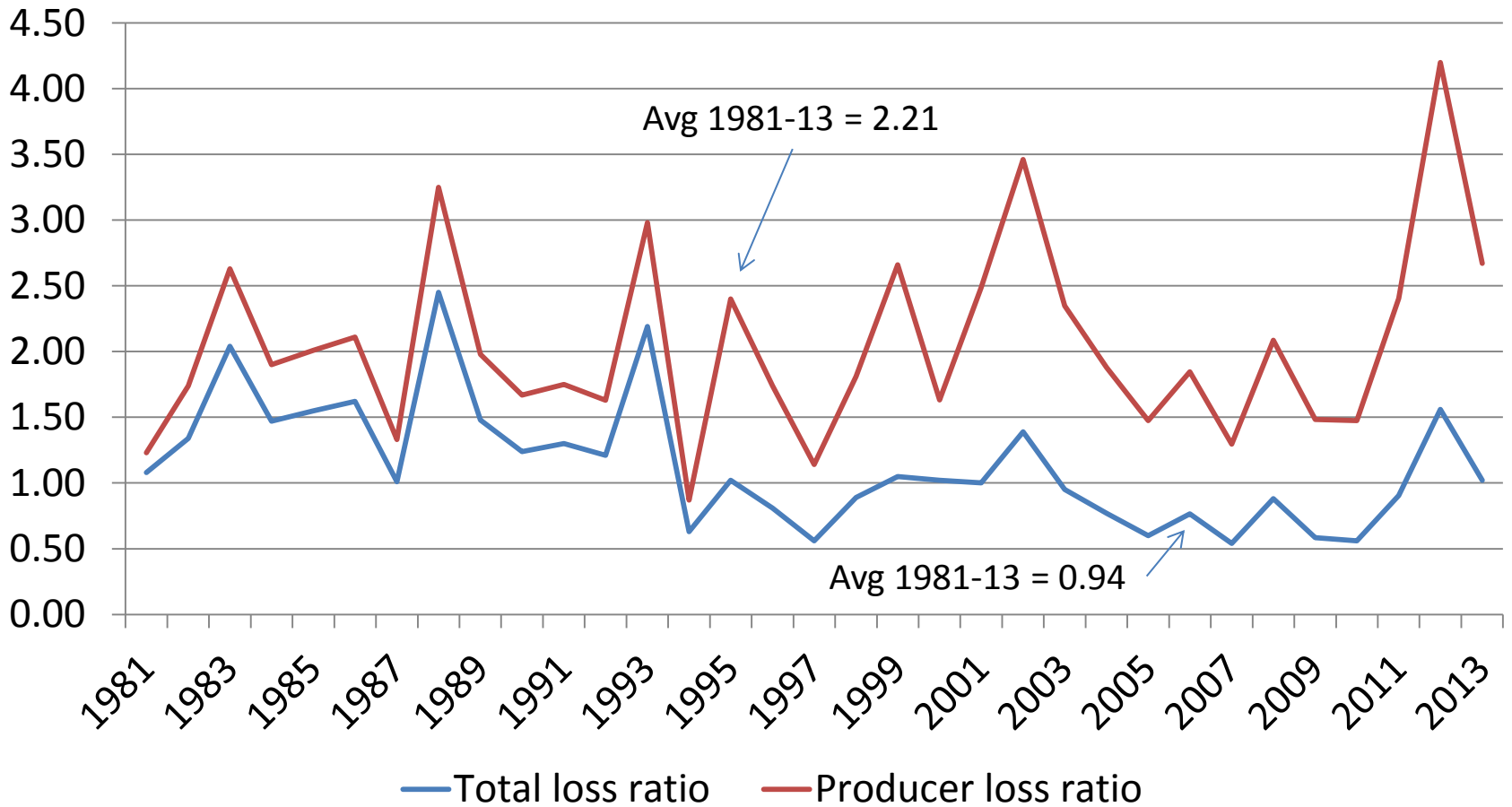
Average coverage levels



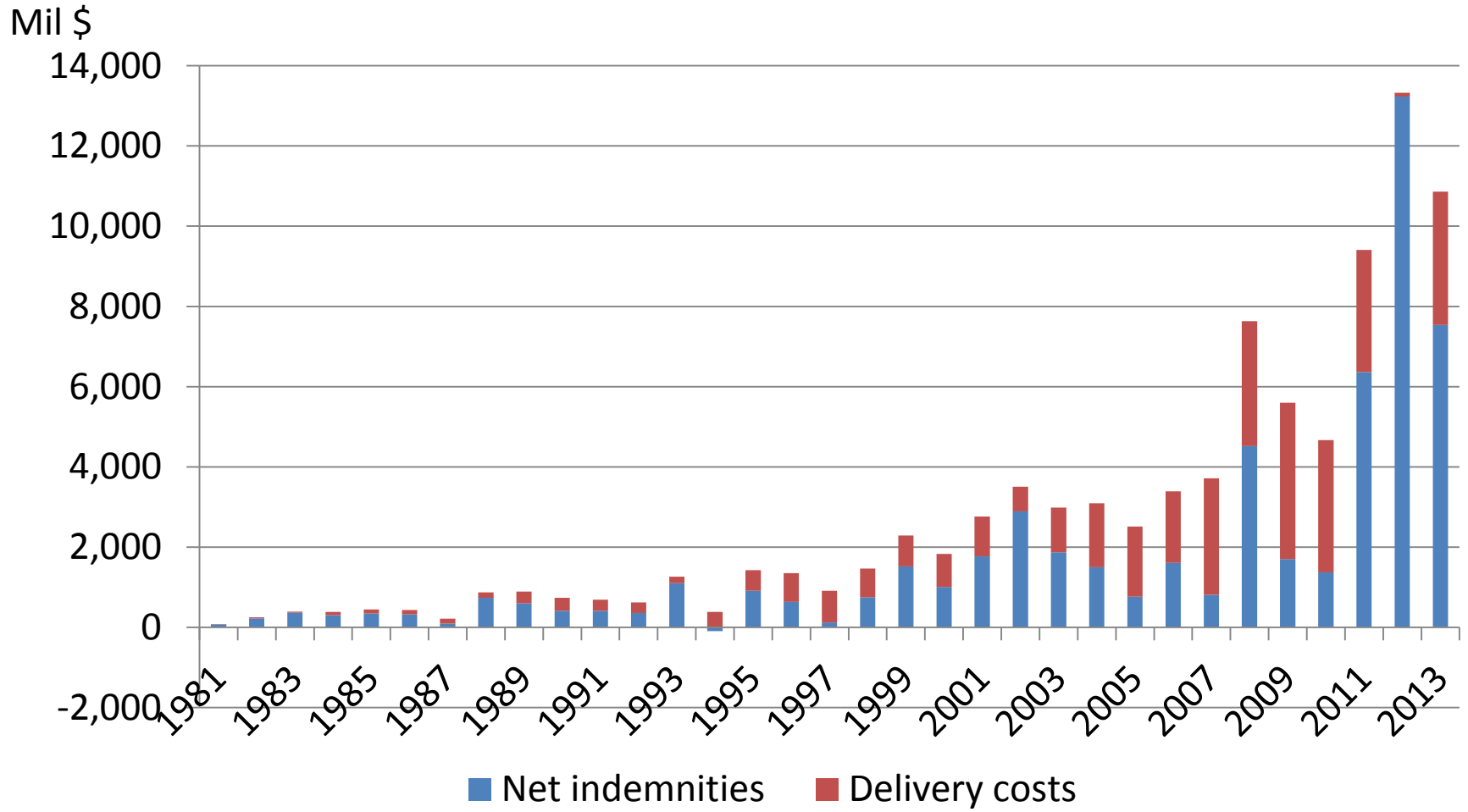
Crop insurance premiums and indemnities



Loss ratios



Crop insurance program costs



Farm bill implementation

- Augmented crop insurance
 - Supplemental Coverage Option
 - Stacked Income Protection (STAX)
- Other
 - Crop margin coverage
 - Peanut revenue
 - APH adjustment
 - Organic crops
- Cross compliance
- NAP
 - 65% coverage w/ 5.25% premium fee
 - Payment limits

Issues

- Budget environment—crop insurance now largest source of expenditures
- Premium subsidies
- Delivery
 - The SRA and “net neutrality”
 - Commission caps
 - Adequate rate of return
- Implications of “Big Data” for crop insurance