

Digitization On Demand

Access Through Collaboration

Laurie Rizzo

Special Collections, University of Delaware Library

Collaboration

- Special Collections
- Interlibrary Loan (ILL)
- Digitization

Previously

Special Collections had worked with ILL

And

Special Collections had worked with Digitization

Project Summary

- Special Collections materials do not circulate.
- ILL request for Special Collections materials was generally canceled.
- ILL reviews incoming requests for Special Collections materials and sees if the item is a candidate for digitization.
- Candidates for digitization are then evaluated.
- The item is brought to the Digitization department to be scanned.
- A digital copy is made available both to the borrowing library and then widely through HathiTrust.
- The project both increases lending access and the permanent digital collections.

How This Came About:

- September 2010: Meeting with ILL & SPEC
 - Learned that between 6/08 - 9/10
 - 1756 requests
 - 840 were eligible
- 9/22/11: OCLC Scan & Deliver Webinar
 - Informal meeting followed
- 10/3/11: Formal meeting between the 3 departments (including dept. heads and assist. directors.
- 10/3-10/24/11: Discussion & review of models

Models and Literature

- University of Wisconsin
<http://www.wils.wisc.edu/lend/digitdemand.html>
- Harvard University
<http://hcl.harvard.edu/info/imaging/>
- University of Michigan
<http://www.lib.umich.edu/interlibrary-loan/digitization-demand>
- Kristine J. Shraugera & Lee Dotsona
Scan by Numbers: Interlibrary Loan Lending Statistics
Shape Digital Initiative. *Journal of Interlibrary
Loan, Document Delivery & Electronic Reserve*
Volume 20, Issue 3, 2010

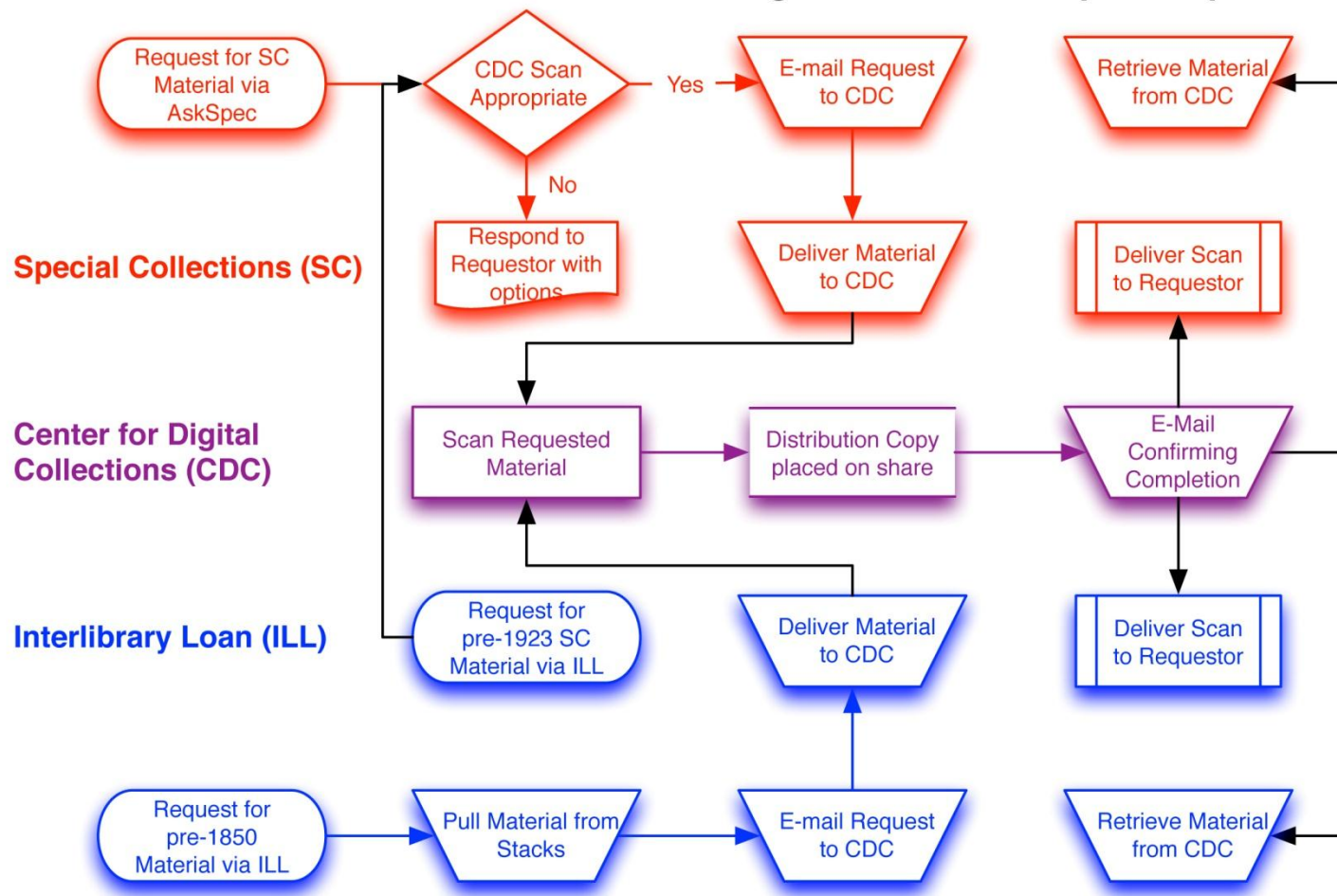
How This Came About (cont):

- 10/24/11: Draft of project workflow
- 10/28/11: Scanned our first book as a test
 - Using a Zeutschel 12000 HQ
- 11/11/11: Pilot project announced to Library



Workflow

Pilot Process - CDC On-Demand Scanning for ILL and AskSpec Requests



Interlibrary Loan Pricing

1-50 pages, 20IFM or \$25

51-100 pages, 30IFM or \$35

101-150 pages, 40IFM or \$45

151-200 pages, 50IFM or \$55

201-250 pages, 60IFM or \$65

251+ pages, by estimate only

Sample Email Request

- Special Collections,

Please bring the following item to the Center for Digital Collections so it can be digitized for ILL:

Call Number: SPEC GEN Trade Catalog / ok to digitization fee

Location: special collections

Title: Illustrated catalogue of hardware / manufactured by the Reading Hardware Company.

Author: Reading Hardware Company

Imprint: Reading, Pa. ; The Company, 1891

ILLiad Transaction Number: 191108

Assessment

- As of 10/23/12:
 - 55 titles digitized
 - 2 items awaiting digitization
 - 110 requests for items that were digitization candidates, but the borrowing library did not pursue a digital copy
 - 27 requests were cancelled because of material condition, existing availability, etc

Recommendations & Lessons Learned

- Can't digitize everything:
 - Binding too fragile, pages too brittle
 - Uncut pages
 - Print too close to the gutter
- Size does matter!
 - Items > 60cm x 43cm cannot scan
 - (because it doesn't fit on the scanner)
- Have backups:
 - Staff (coverage if someone is out)
 - Equipment (don't rely on just one machine)

Recommendations & Lessons Learned (cont.)

- Invest in high quality equipment.
- Monitor turnaround time
 - ILL requests only have four days to be fulfilled before the request is canceled.
- Trust that materials will be handled properly.
- Communication between partners.
- Commitment to the project.

Thank You!

- Megan Gaffney, Coordinator of Interlibrary Loan
- Thomas Pulhamus, Center for Digital Collections
- Mary Durio, Head of Center for Digital Collections
- Tim Murray, Head of Special Collections
- Gregg Silvis, Assistant Director (over Center for Digital Collections)
- Nancy Nelson, Assistant Director (over Interlibrary Loan)
- Justin Wing, Head of Library IT
- Theresa Hessey, Center for Digital Collections
- Alex Johnston, Special Collections
- Sherri Sobocinski, Interlibrary Loan
- Anita Robbins, Interlibrary Loan