



Photo credit: Citizens Planning & Housing Association, www.cphabaltimore.org

Workforce development

Southwest Partnership

Jeanne Choquehuanca, Joe Christo, and Ray Cooper

Focus: Workforce Development

In order to fulfill the Southwest Partnership's vision of a "cohesive community of choice built on mutual respect and shared responsibility", it is crucial to develop and sustain a **training and educational opportunities, a healthy job market, and access to those jobs for local residents.**

Local and Regional Context

- Education and training beyond high school increasingly important
- Baltimore City workers particularly suffer from high unemployment and low wages due to higher rates of low education/skills attainment
- Among those without a high school diploma, more than 25% are unemployed, and many more do not participate in the labor force
(from Job Opportunities Task Force)

Variables Examined in Southwest Baltimore

1. Neighborhood Demographics

- *What is the socioeconomic profile of residents?*

2. Workforce Participation

- *What are the employment and skills gaps?*

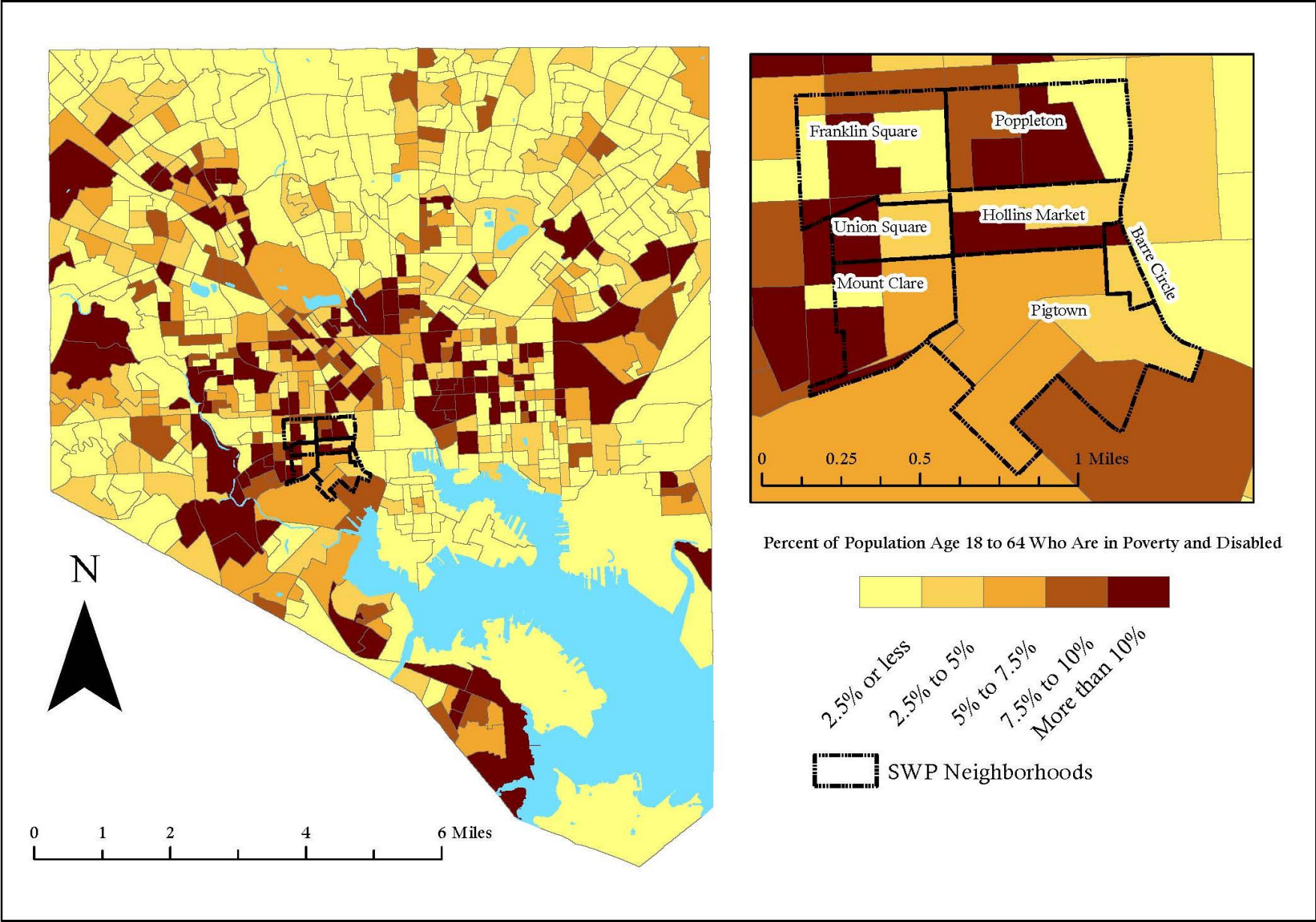
3. Workforce Development Programs

- *What resources and services exist to fill in these gaps?*

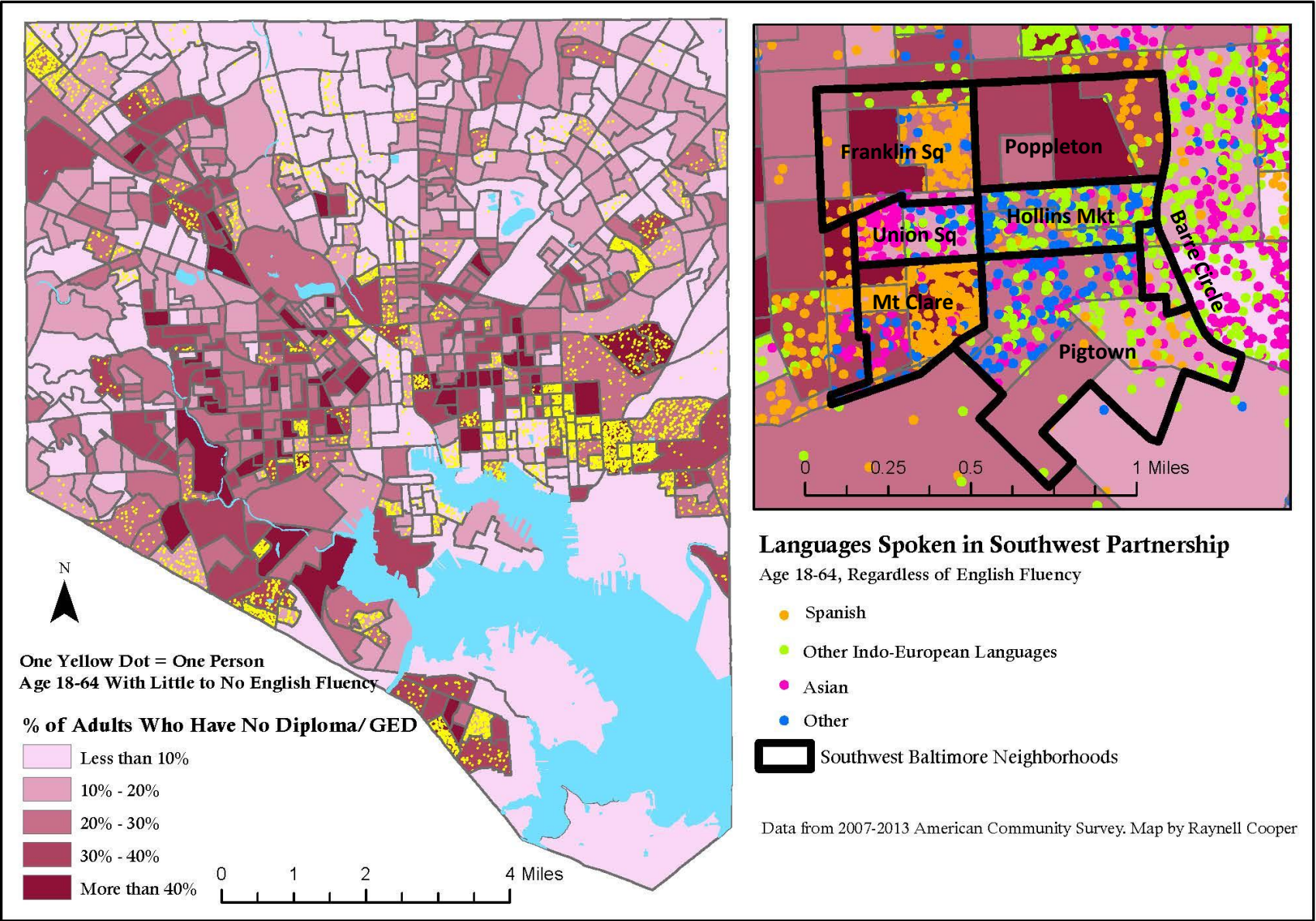
Demographics

- Educational Status
 - Fewer high school and college graduates than the rest of the city
- Disability Status
 - ~5% of adults in poverty and disabled
- Language
 - Diversity of languages spoken
 - Most people speak English relative to some other parts of the city

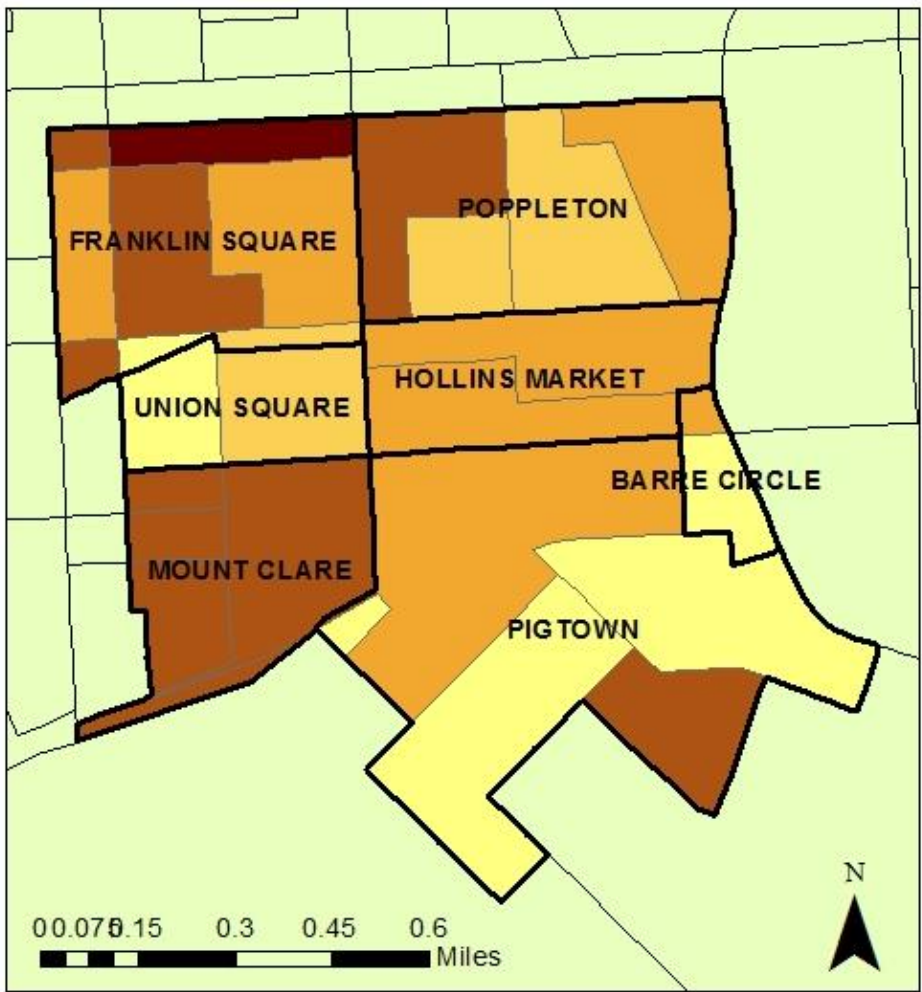
In the Most Need: Poverty and Disability in Baltimore



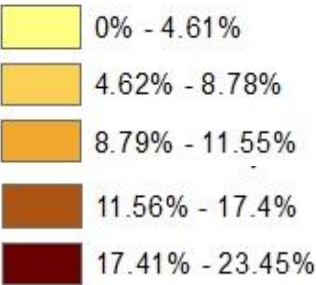
Past Predicts Future: Education and Language Skills in Baltimore



Unemployment in Southwest Baltimore



Unemployed as
Percent of Total
Population



Baltimore City’s unemployment rate was 8.7% in 2014, higher than the state of Maryland’s 5.8% rate of unemployment, and almost double the national average. (<http://msa.maryland.gov/>)

Calculating Jobs-Skills Mismatch

In order to identify jobs/skills mismatches, we performed a ratio calculation, comparing different levels of skilled jobs and different levels of skilled workers.

Skill level was determined by education level:

Low skill = less than high school and high school,

Mid-skill = some college

High-skill = bachelor's or advanced degree

Workplace/job

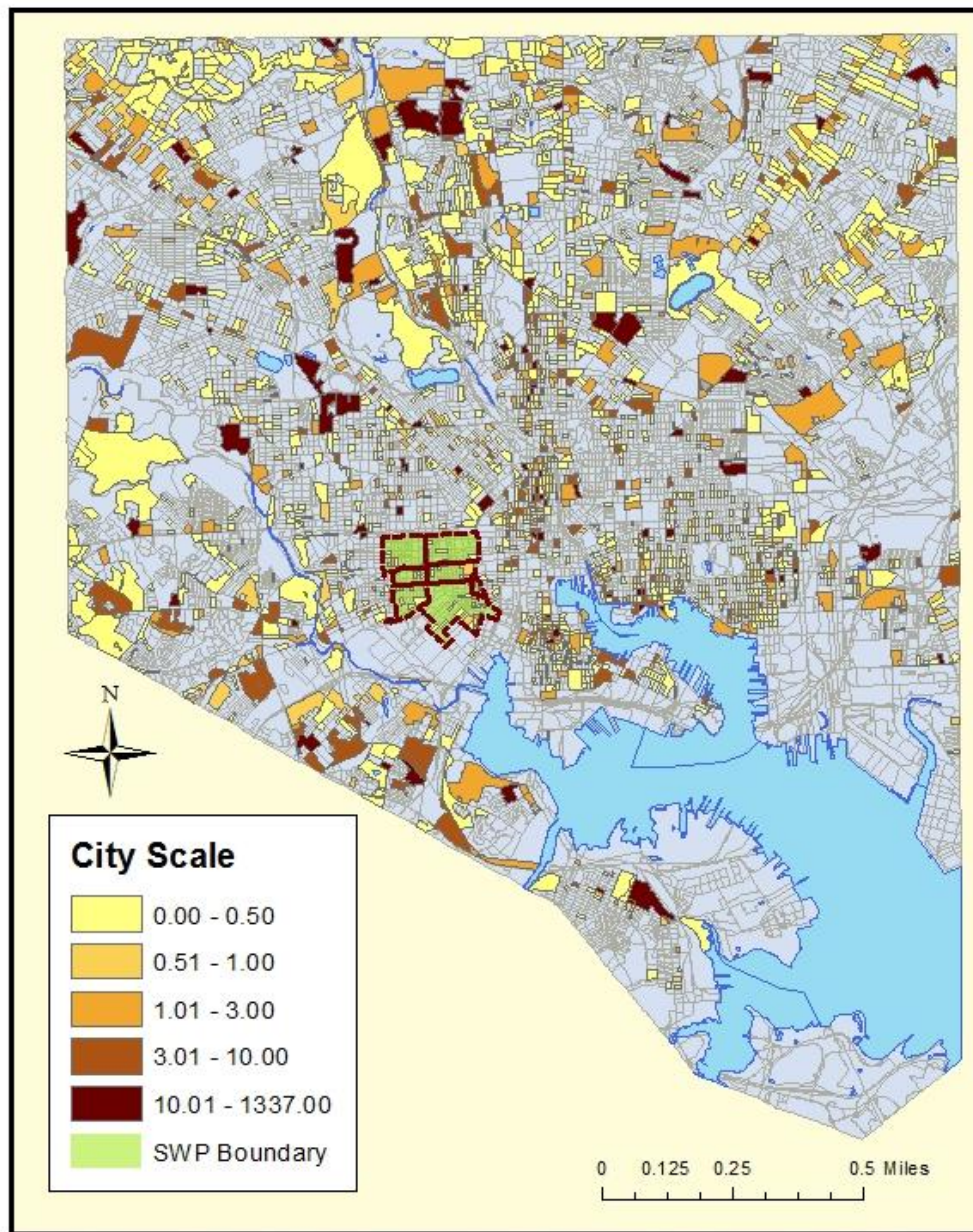
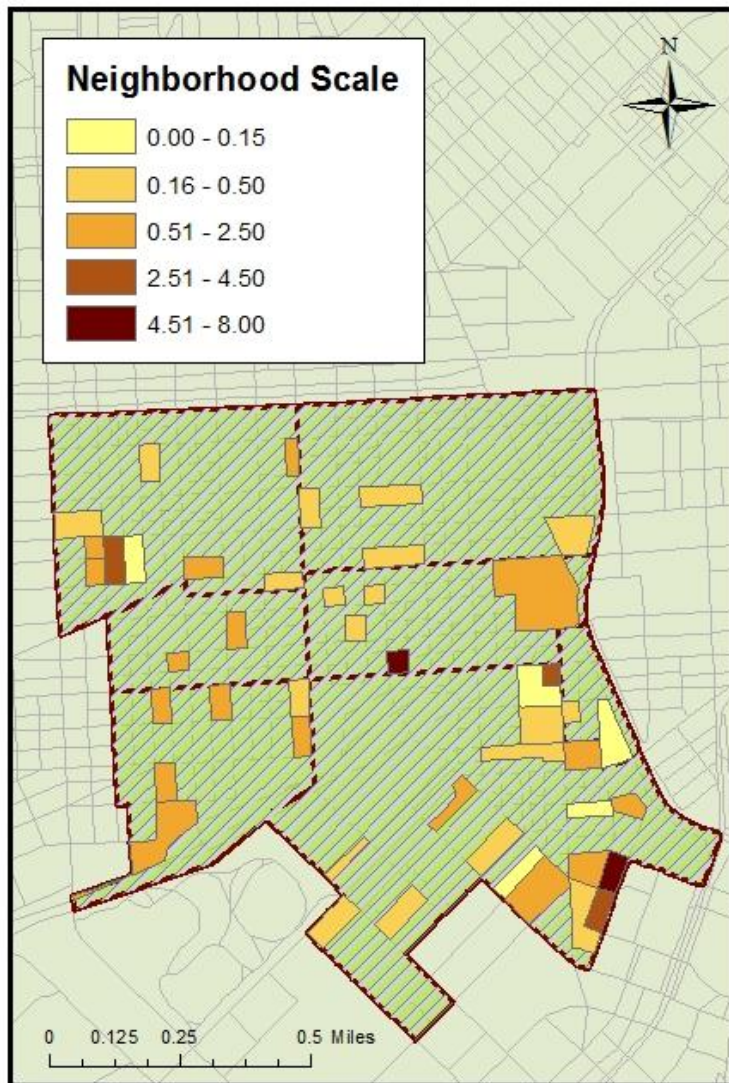
according to skill level

Resident Worker

according to skill level

Southwest Baltimore High Skill Jobs & Workers

*Comparing the number of High-skill workers
to the number of High-skill jobs*



Data provided by U.S. Census Longitudinal Employer-Household
Dynamics (LEHD), LODES v. 7.1



Story Mapping the Opportunities and Programs

Following this context, we have created an interactive map that shows the current education and training opportunities in the neighborhood and throughout the city, and their proximity to public transportation:

<http://arcg.is/1JcJtx5>

Recommendations

1. Maintain updated, accessible database of workforce development programs and resources
2. Better align workforce development programs with key opportunity industries by collaborating with organizations like the Baltimore Metropolitan Council (BMC) and Job Opportunities Task Force (JOTF)
3. Encourage the City of Baltimore to sustain and grow career centers, since these centers provide a crucial gateway and roadmap to career training and placement

Appendix

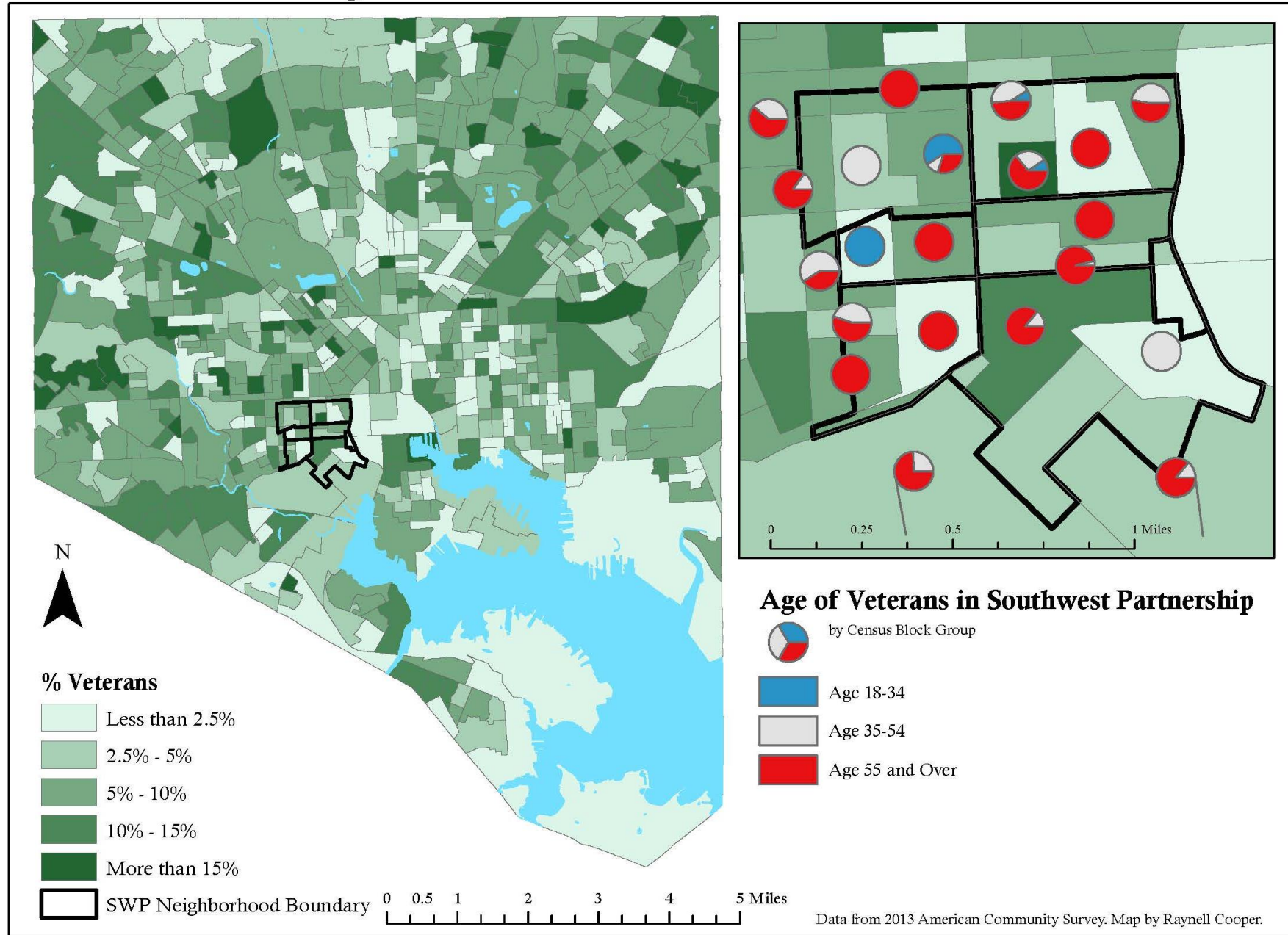
Subject Area: Southwest Baltimore

The Southwest Partnership (SWP) is a group of 13 community and anchor institution partners...Although the neighborhoods range greatly in terms of income, education level and property value, ***they have collectively experienced “decades of disinvestment, failed redevelopment and negative press.”***

Data Sources

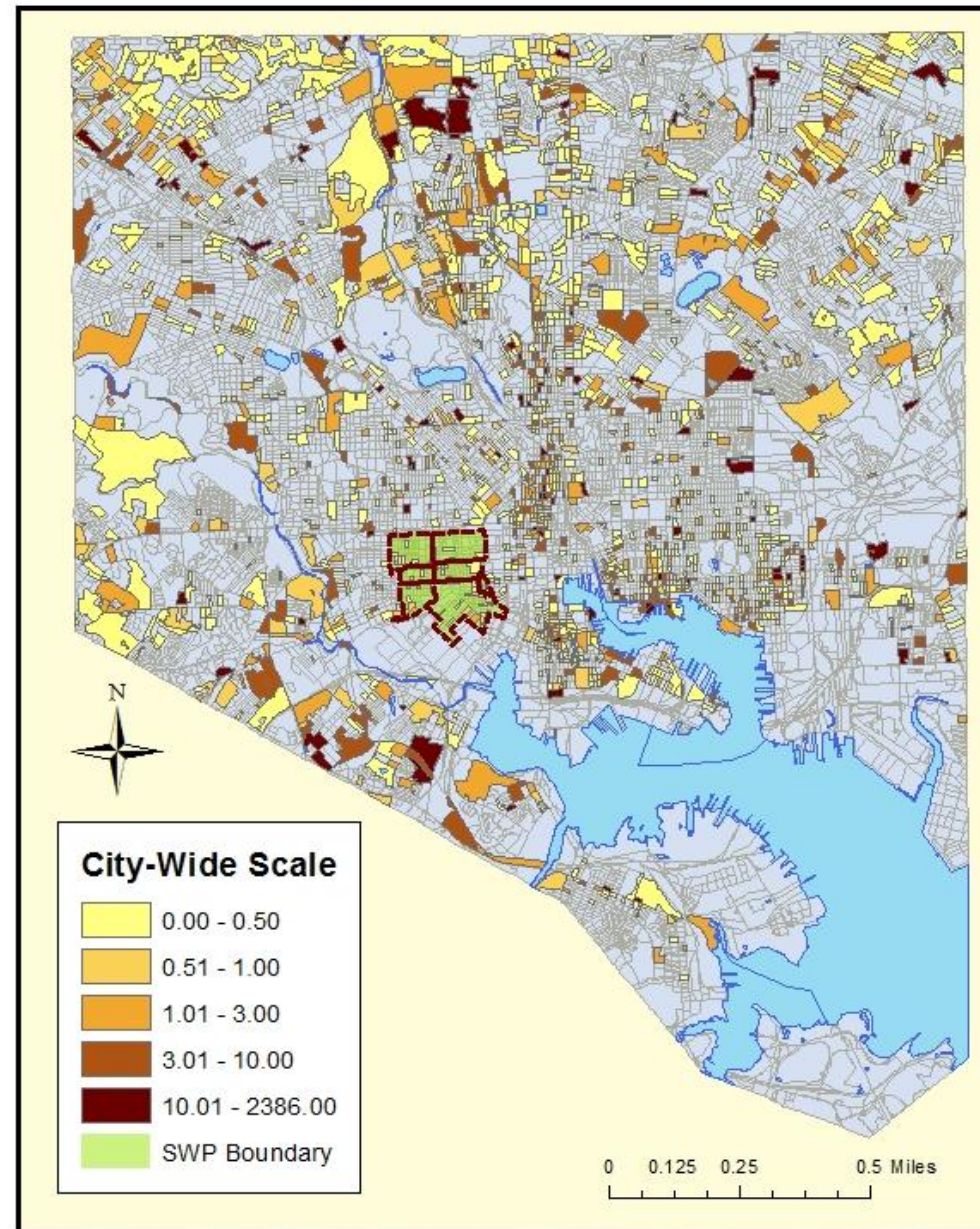
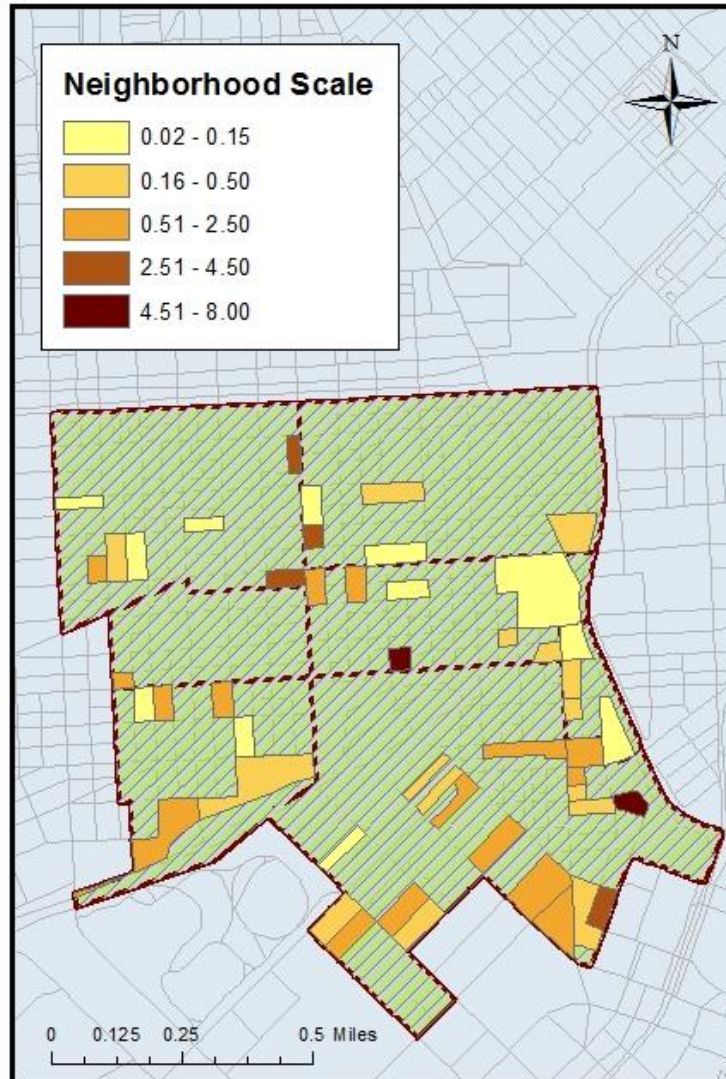
- 2010 American Community Survey (ACS)
- 2013 American Community Survey (ACS)
- U.S. Census Longitudinal Employer-Household Dynamics (LEHD), v. 7.1
- State of Maryland Department of Labor, Licensing, and Regulation's *Maryland Workforce Exchange*
- Enoch Pratt Free Library - The Public Library of Baltimore City
- Open-Source Data via ArcGIS Online

Serving Those Who Served: Veterans in Baltimore



Southwest Baltimore Low Skill Jobs & Workers

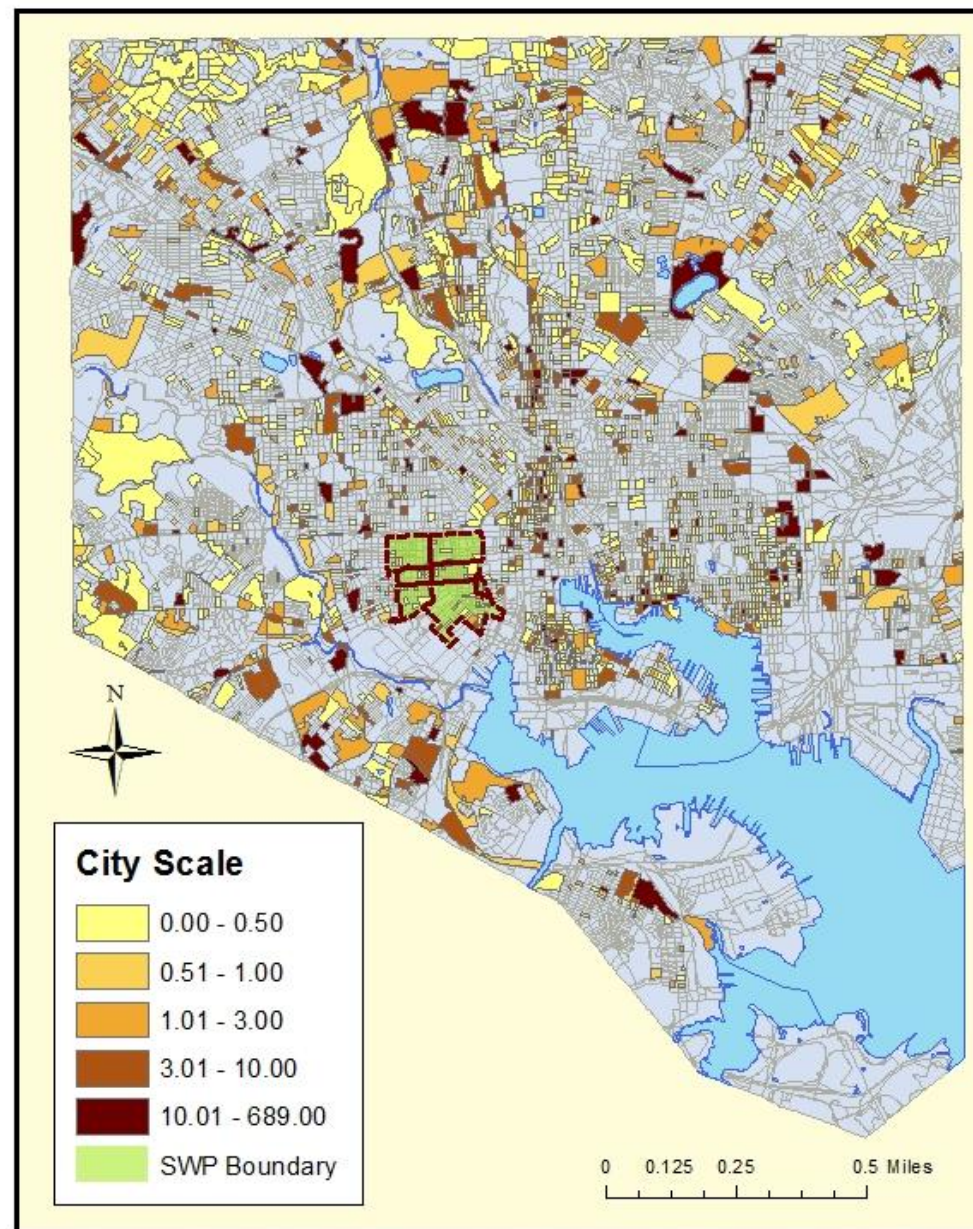
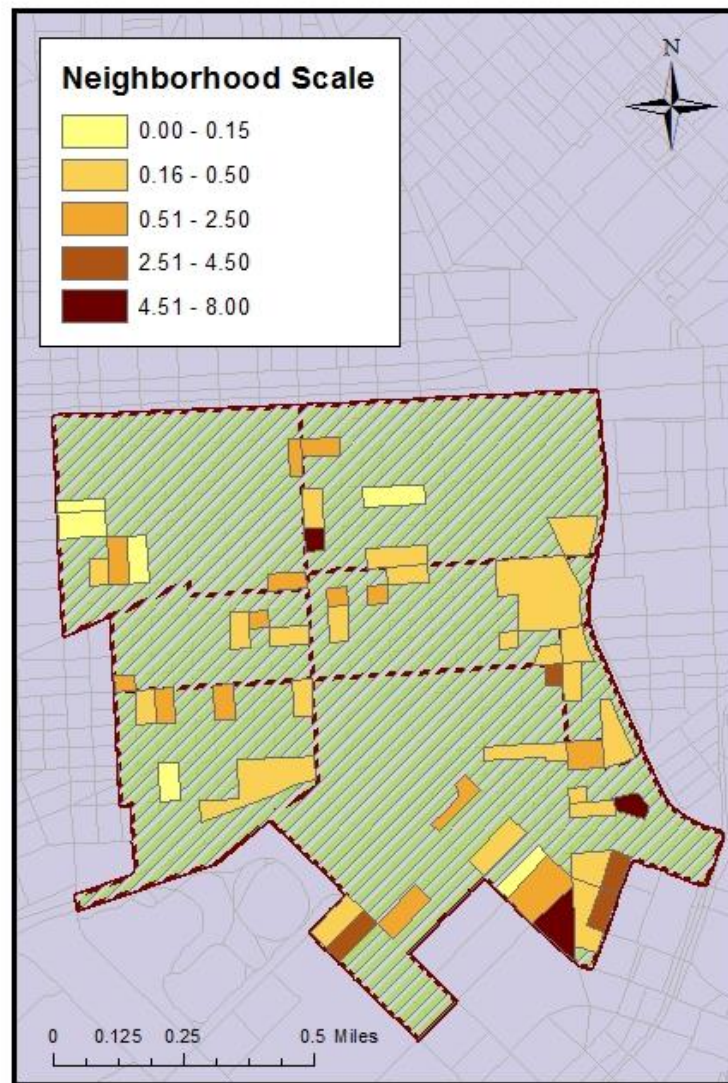
*Comparing the number of Low-skill workers
to the number of Low-skill jobs*



Data provided by U.S. Census Longitudinal Employer-Household
Dynamics (LEHD), LODES v. 7.1

Southwest Baltimore Mid Skill Jobs & Workers

*Comparing the number of Mid-skill workers
to the number of Mid-skill jobs*



Data provided by U.S. Census Longitudinal Employer-Household Dynamics (LEHD), LODES v. 7.1