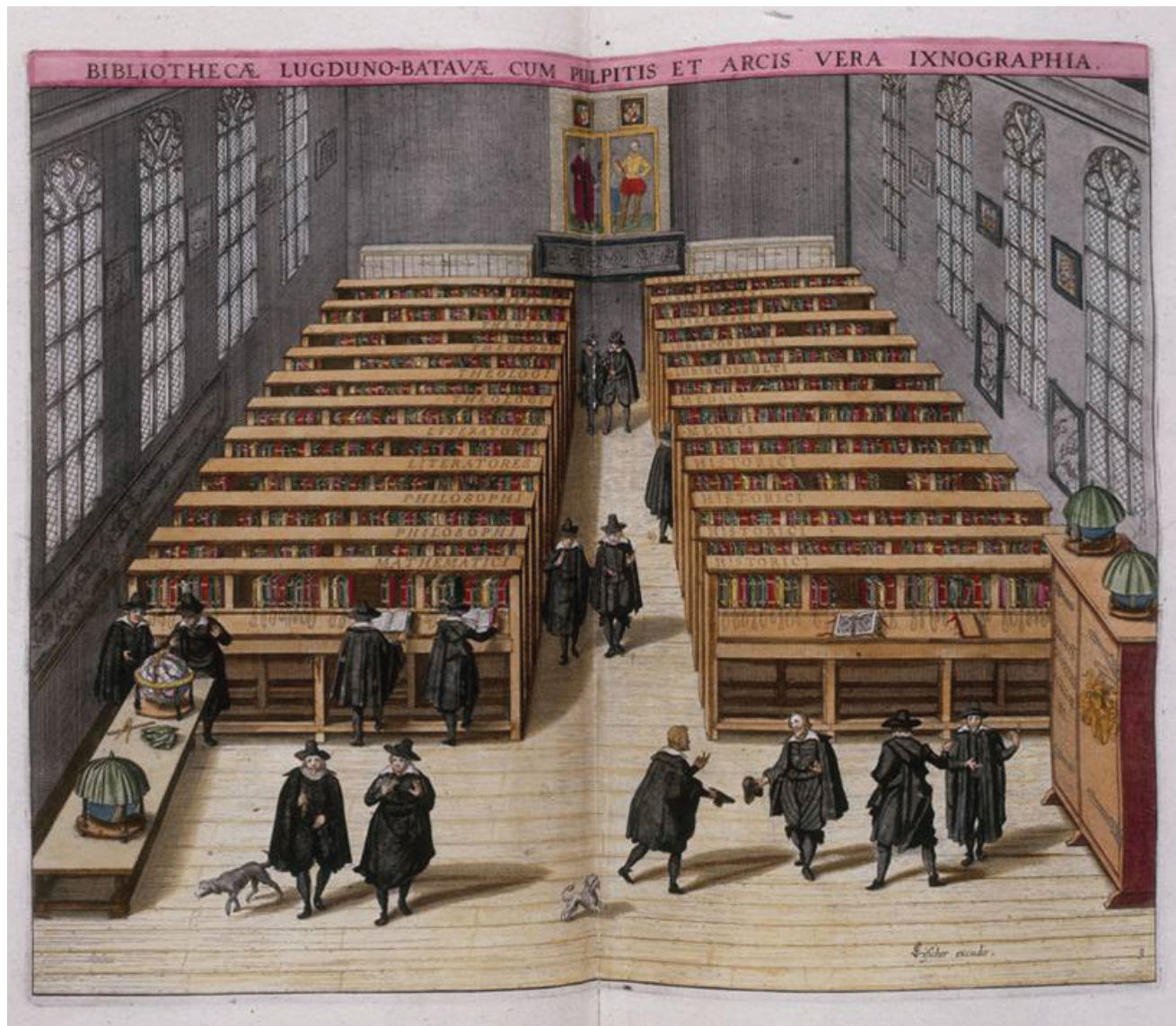


# **CHAPTER 4.** DEFINING THE LIVING LIBRARY **FIGURES**

.....  
**FIGURE 4.1. Stall System Example. Interior of the Library of the University of Leyden from a print by Jan Cornelius Woudanus, dated 1610 (Woudanus, PD-OD)**  
.....





---

**FIGURE 4.2. Laurentian Library by Michelangelo (Sailko GNU Free Documentation License)**

---





.....  
**FIGURE 4.3. Bibliothèque Ste. Geneviève by Henri Labrouste (Pol Creative Commons Attribution-Share Alike 3.0 Unported)**





.....  
**FIGURE 4.4. Bibliothèque Ste. Geneviève by Henri Labrouste (Marie-Lan Nguyen  
Creative Commons Attribution 2.0 France)**

---





.....  
FIGURE 4.5. Section of Entry Sequence of the Bibliothèque Ste. Geneviève

---

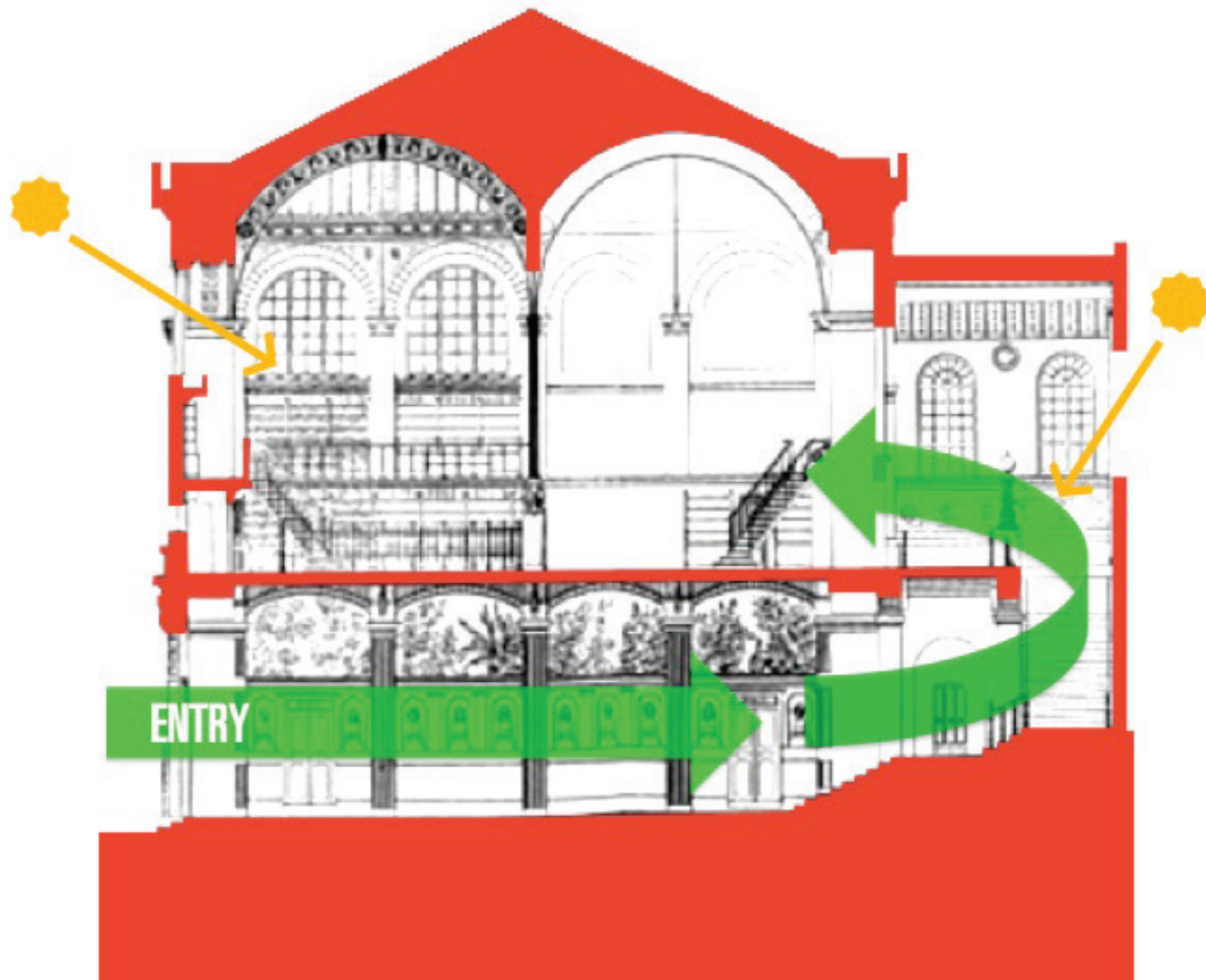




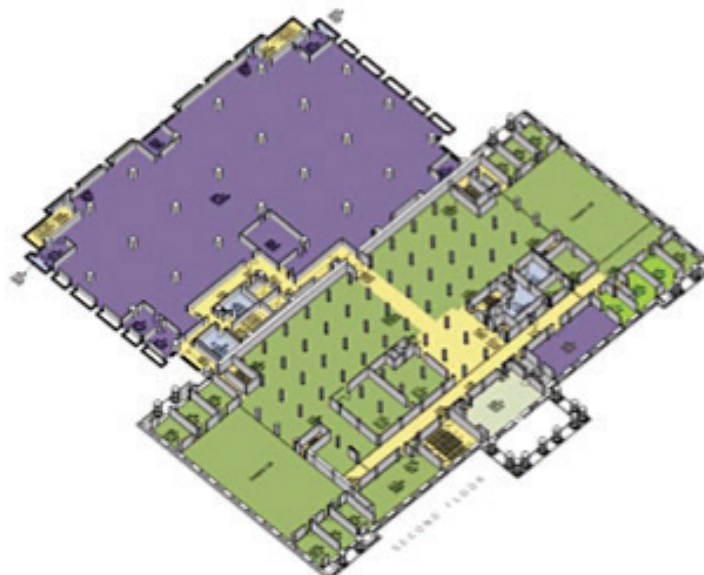
FIGURE 4.6. Use of Space in McKeldin Library, October 2011

Admin/Office	(2,579 sf / 64,458 sf)
Instructional	(0 sf / 5,008 sf)
Stacks	(17,288 sf / 82,092 sf)
Circulation	(9,696 sf / 75,770 sf)
Study	(3,678 sf / 42,019 sf)
Lounge	(495 sf / 6,819 sf)
Study Services	(0 sf / 4,752 sf)
Storage	(59 sf / 11,238 sf)
Utility / Building Services	(1,072 sf / 25,245 sf)



### Third Floor Existing Space Usage

Admin/Office	(16,581 sf / 64,458 sf)
Instructional	(0 sf / 5,008 sf)
Stacks	(0 sf / 82,092 sf)
Circulation	(6,483 sf / 75,770 sf)
Study	(17,608 sf / 42,019 sf)
Lounge	(1,502 sf / 6,819 sf)
Study Services	(388 sf / 4,752 sf)
Storage	(144 sf / 11,238 sf)
Utility / Building Services	(1,063 sf / 25,245 sf)



### Second Floor Existing Space Usage

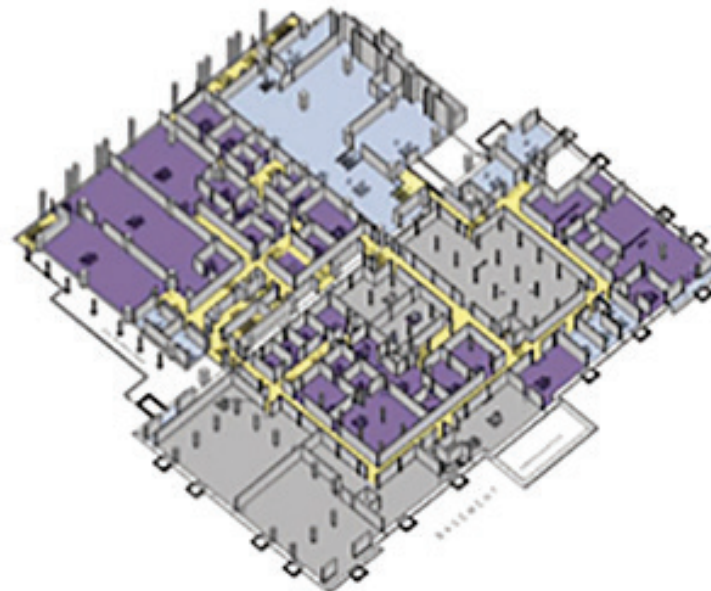
FIGURE 4.6. Use of Space in McKeldin Library, October 2011

Admin/Office	(11,931 sf / 64,458 sf)
Instructional	(0 sf / 5,008 sf)
Stacks	(8,235 sf / 82,092 sf)
Circulation	(11,772 sf / 75,770 sf)
Study	(2,735 sf / 42,019 sf)
Lounge	(3,339 sf / 6,819 sf)
Study Services	(4,064 sf / 4,752 sf)
Storage	(0 sf / 11,238 sf)
Utility / Building Services	(1,416 sf / 25,245 sf)



### First Floor Existing Space Usage

Admin/Office	(15,037 sf / 64,458 sf)
Instructional	(0 sf / 5,008 sf)
Stacks	(0 sf / 82,092 sf)
Circulation	(8,127 sf / 75,770 sf)
Study	(0 sf / 42,019 sf)
Lounge	(0 sf / 6,819 sf)
Study Services	(0 sf / 4,752 sf)
Storage	(10,248 sf / 11,238 sf)
Utility / Building Services	(9,299 sf / 25,245 sf)



### Basement Floor Existing Space Usage



FIGURE 4.7. Way-finding Diagrams of McKeldin Library, February 2012

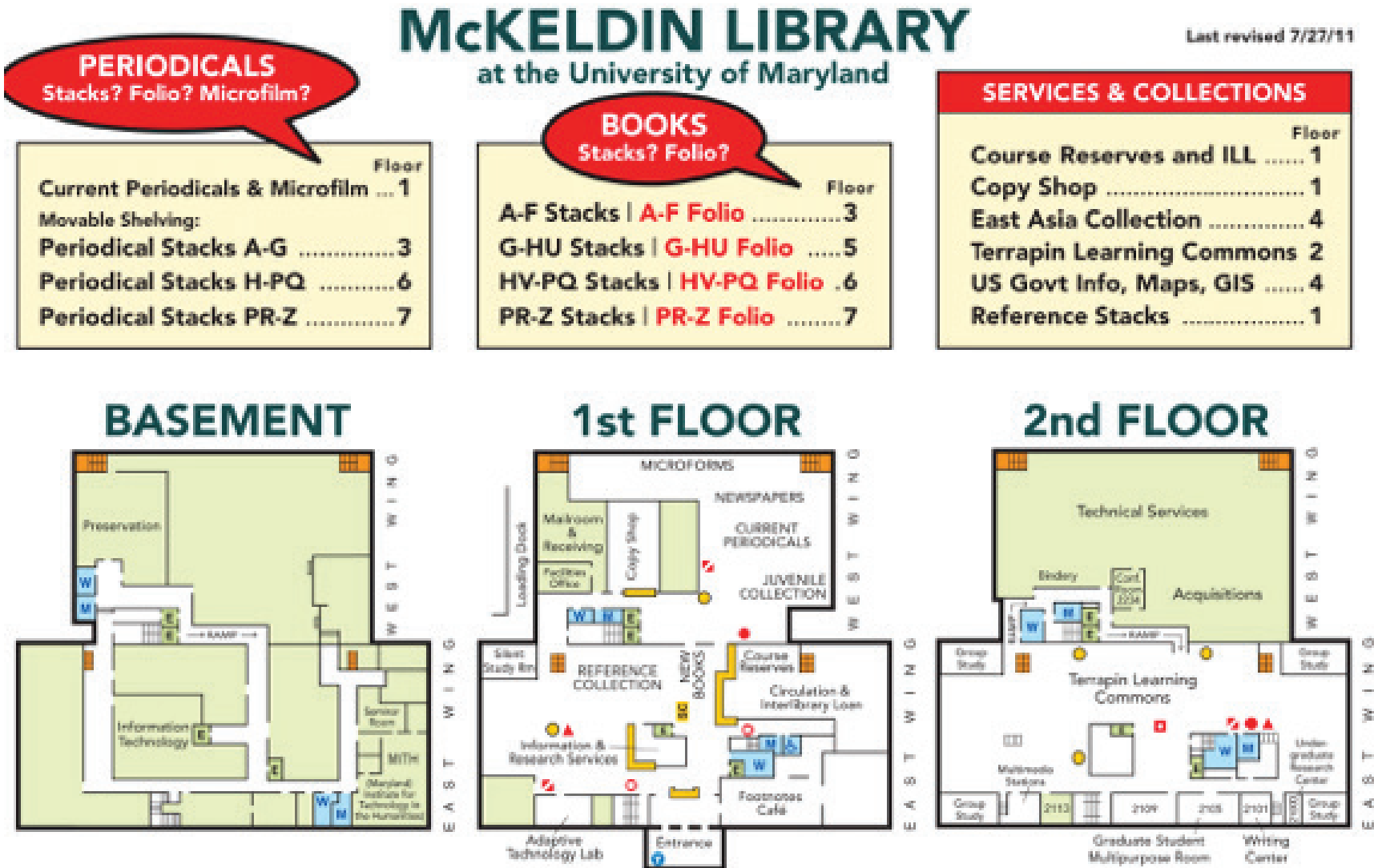
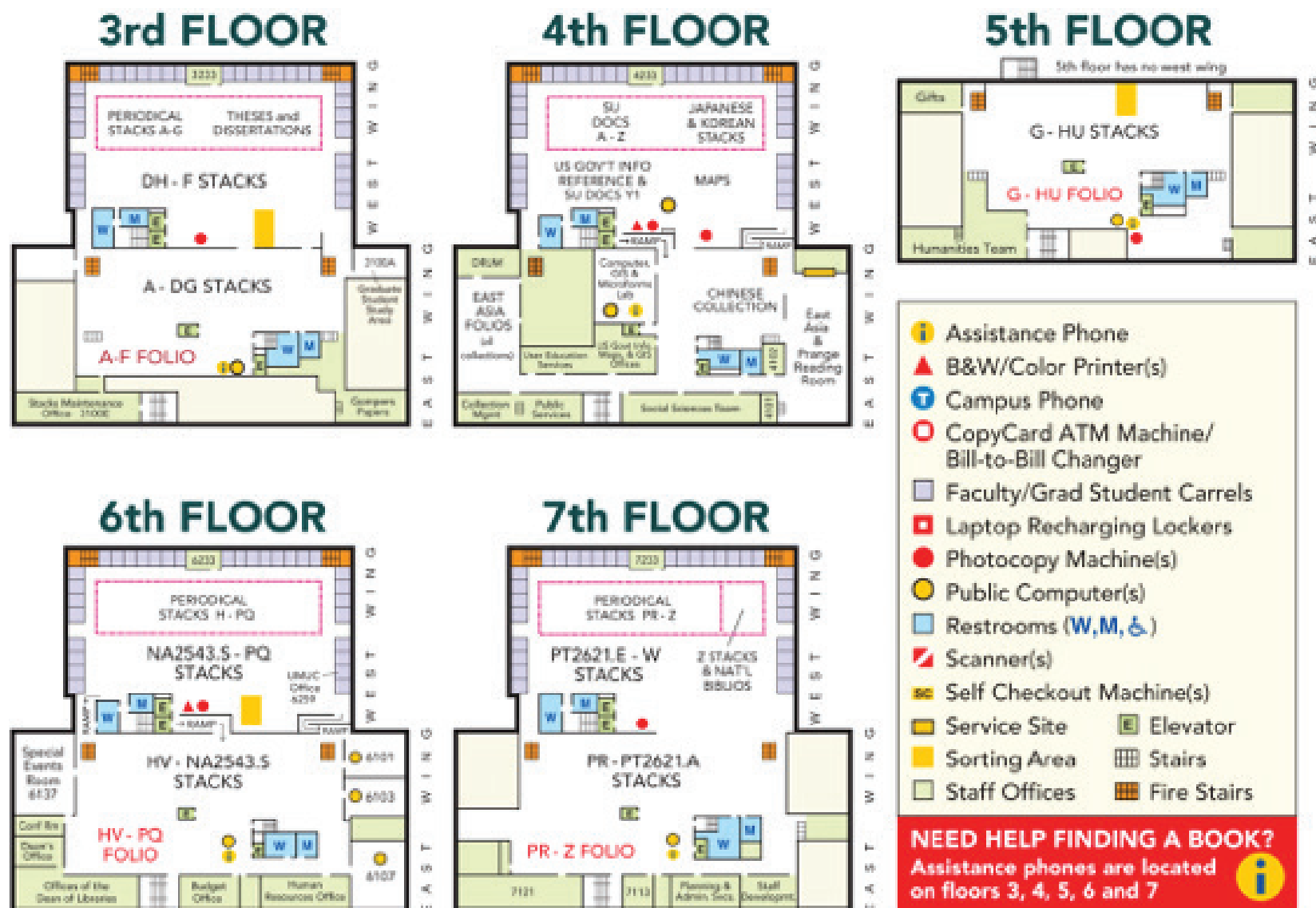


FIGURE 4.7. Way-finding Diagrams of McKeldin Library, February 2012





.....  
**FIGURE 4.8. Architectural Program Summaries, March 2012**

---

## Existing Spaces Usage (sq.ft.)

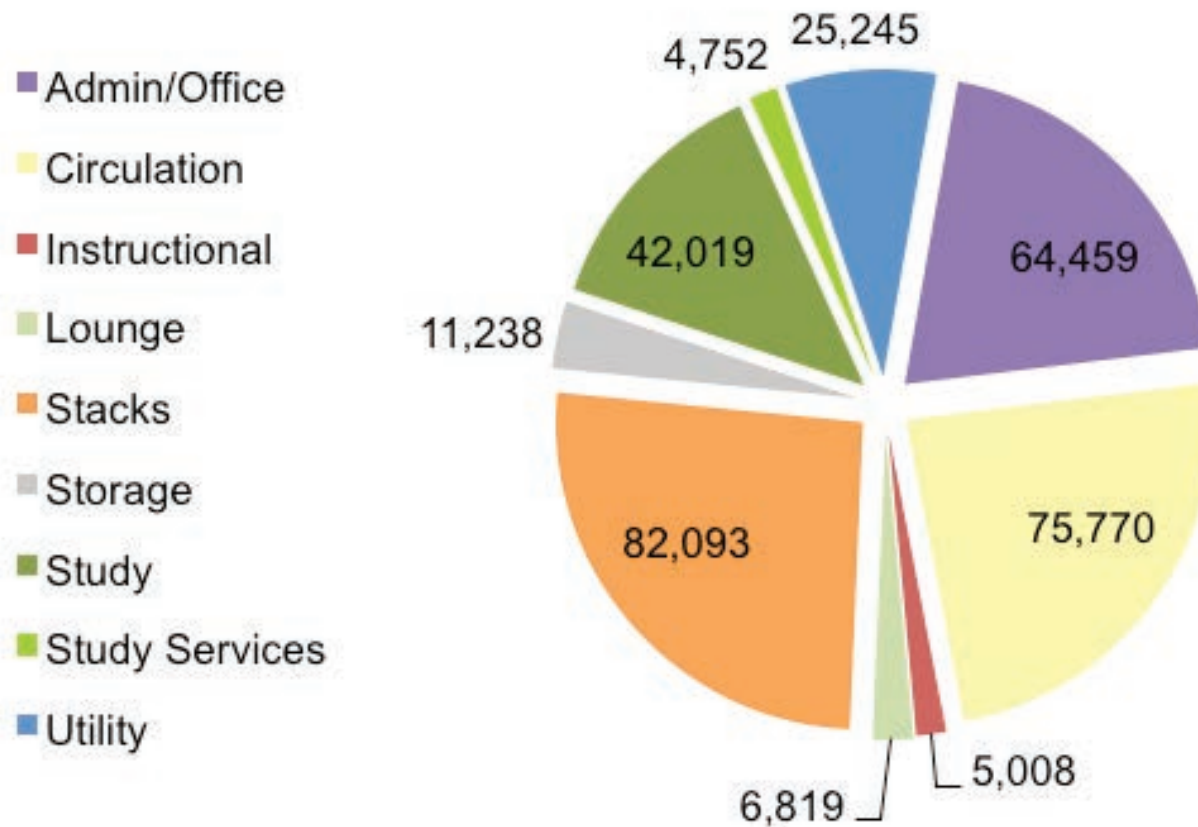
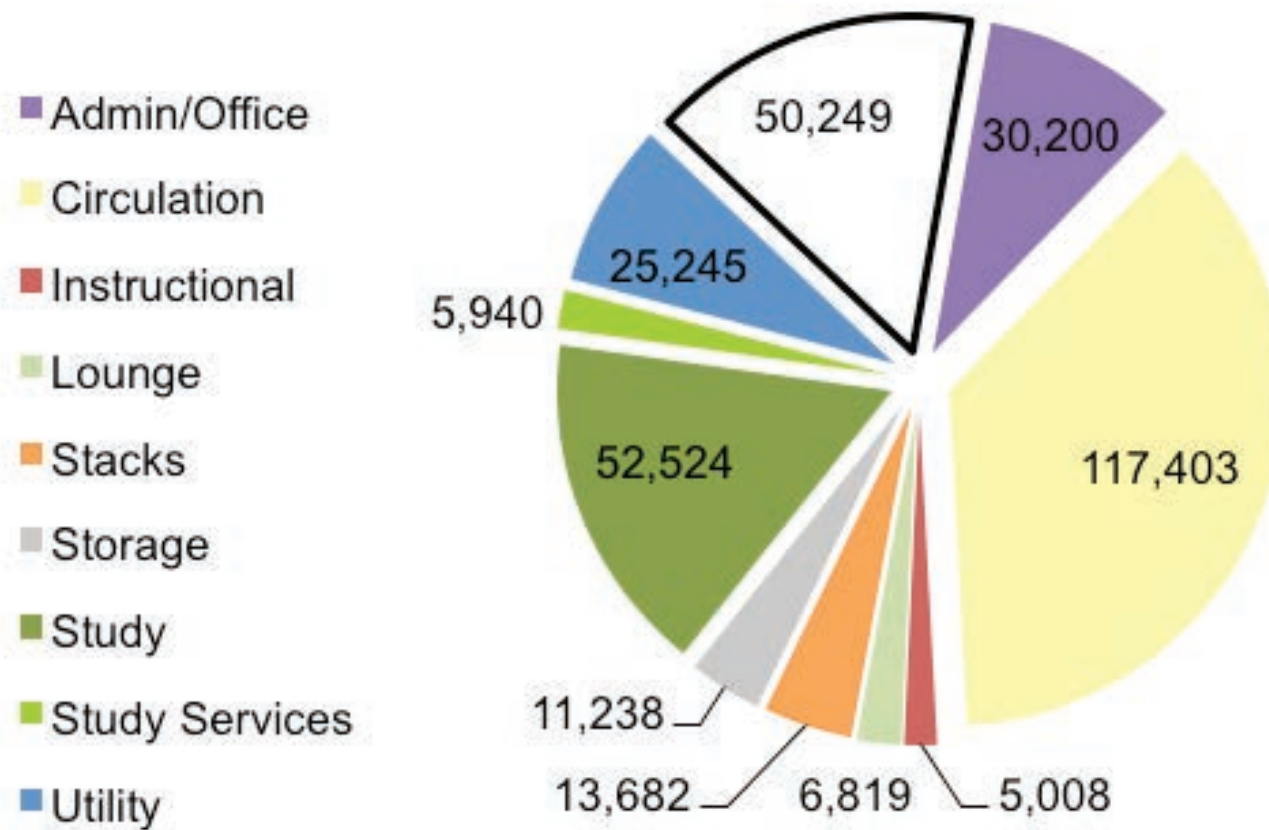


FIGURE 4.8. Architectural Program Summaries (Continued)

## Proposed Space Usage (sq.ft.)



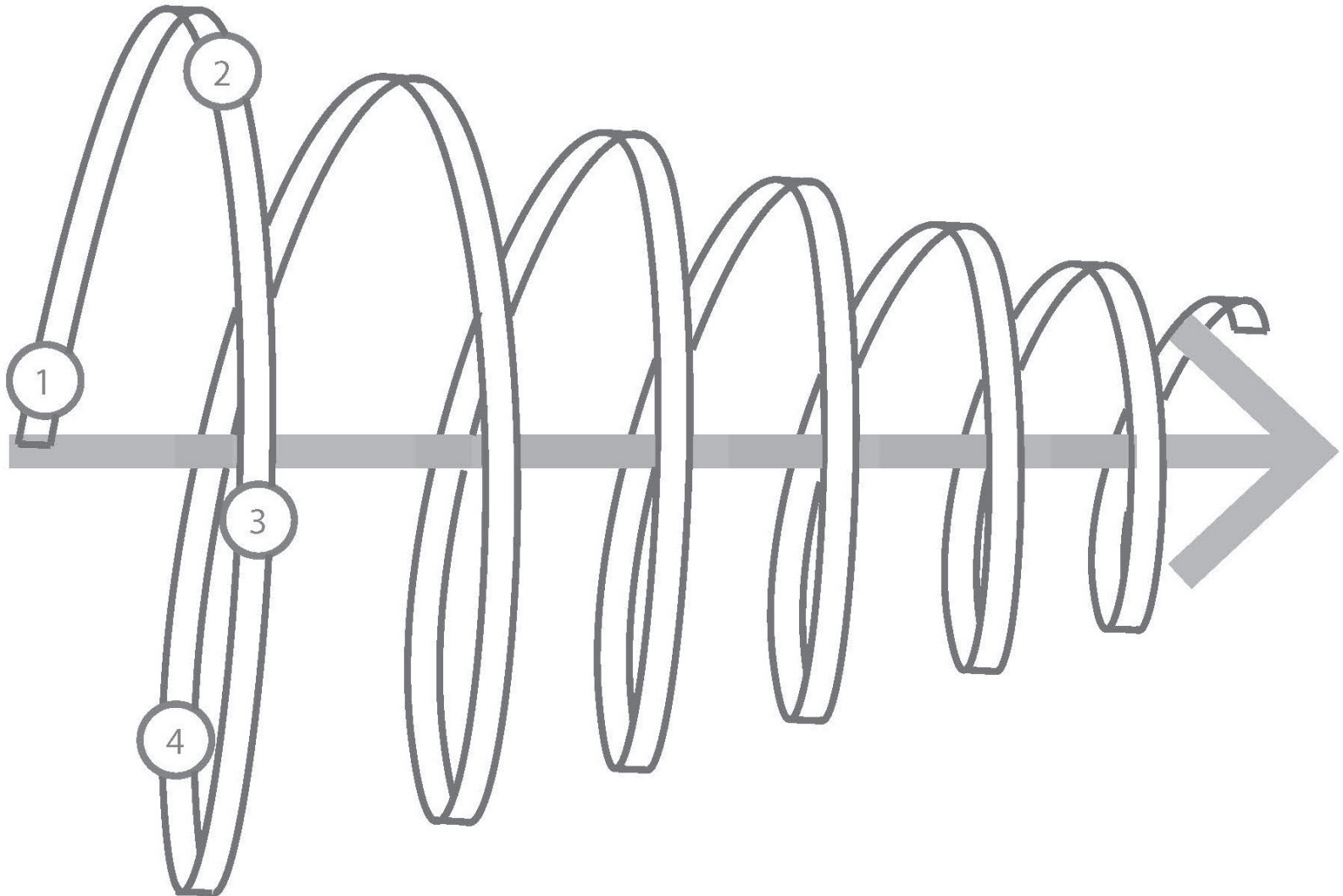


# **CHAPTER 5.** DESIGNING THE LIVING LIBRARY **FIGURES**

.....

**FIGURE 5.1. Design Process Line with Circles and Milestones** by Sandra Vicchio and Nicholas Tomaszewski

---





.....

**FIGURE 5.2. East Front of McKeldin** by Sandra Vicchio

---



.....  
**FIGURE 5.3. West 1990 Elevation of McKeldin** by Sandra Vicchio

---



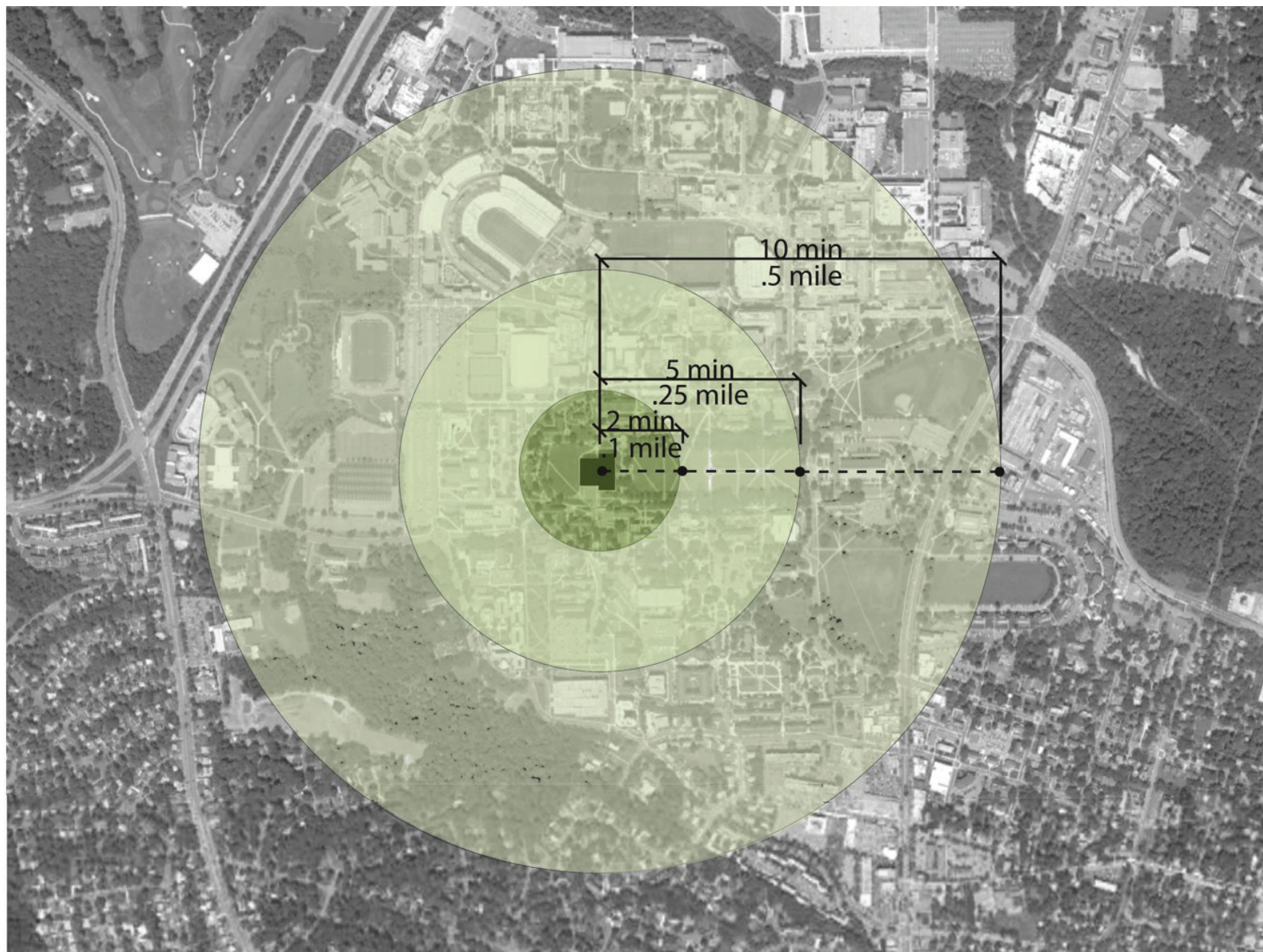


.....  
**FIGURE 5.4. Location of McKeldin Library on Campus** by ARCH 601 Spring 2012





FIGURE 5.5. Walking Distances from McKeldin by ARCH 601 Spring 2012





.....

**FIGURE 5.6. Pedestrian Access to McKeldin** by ARCH 601 Spring 2012

---



.....  
**FIGURE 5.7. Stairs to “Nowhere”** by ARCH 601 Spring 2012

---





FIGURE 5.8. Campus Transportation by ARCH 601 Spring 2012

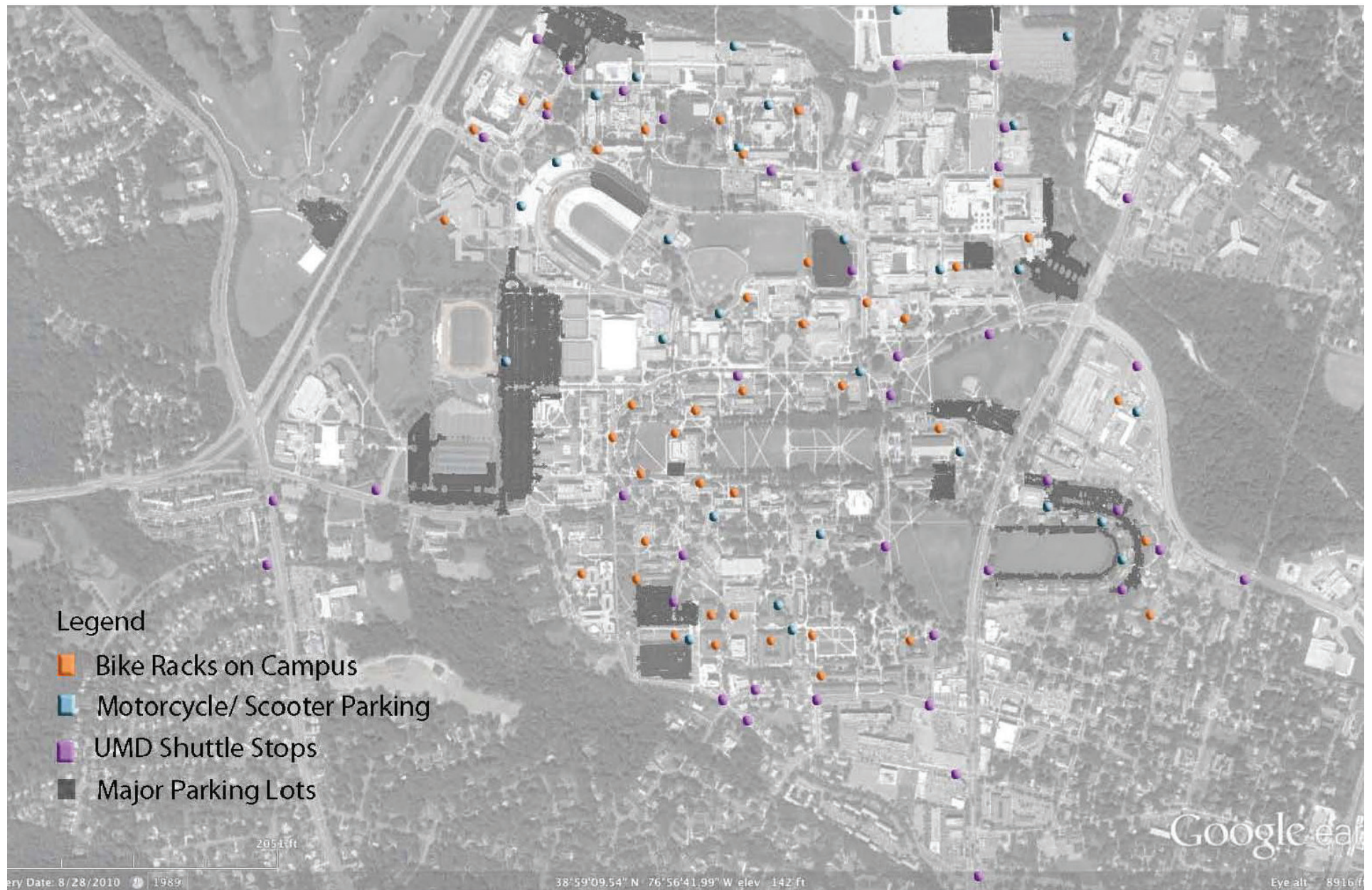




FIGURE 5.9. Building Use Map with Walking Distances by ARCH 601 Spring 2012

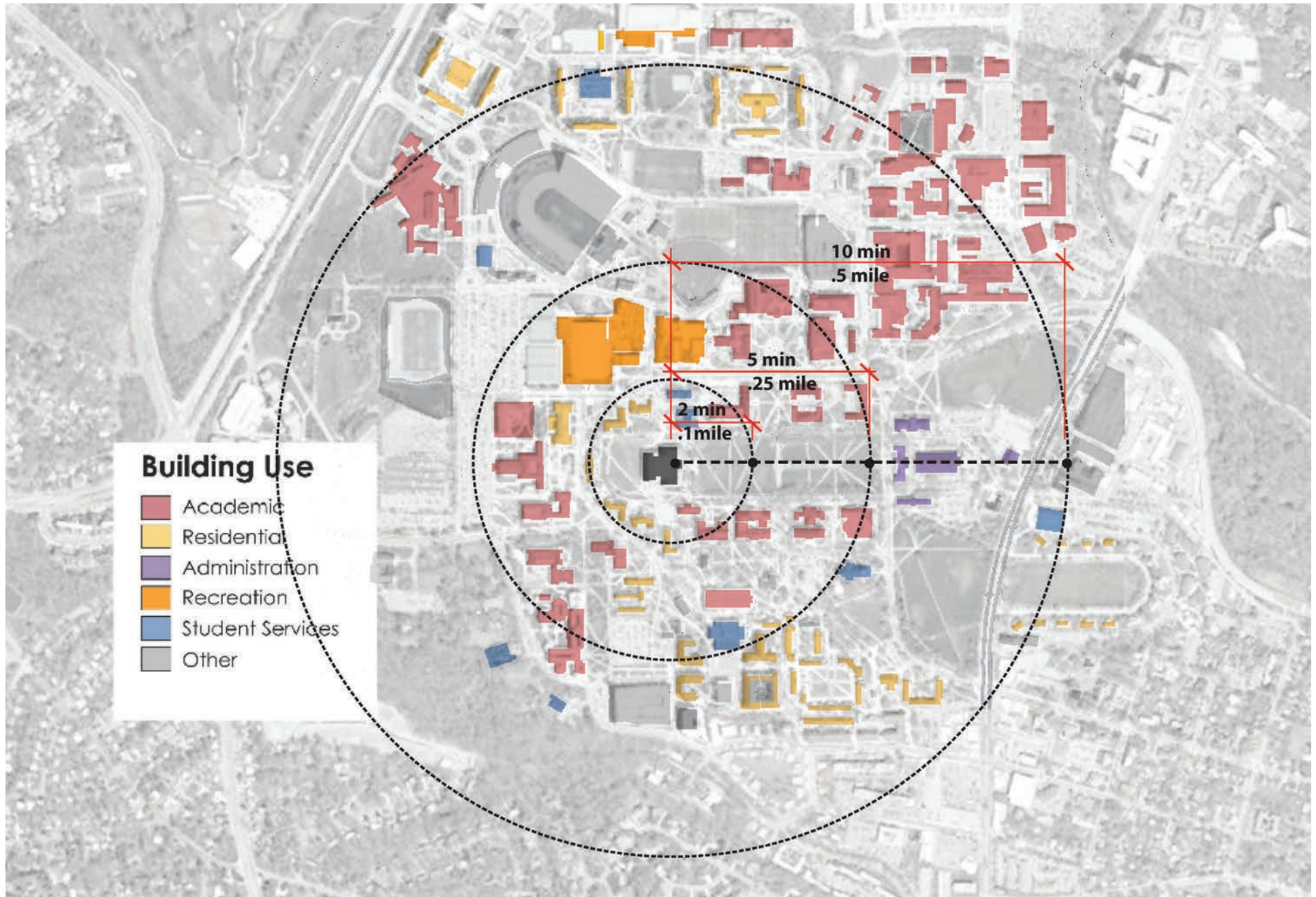
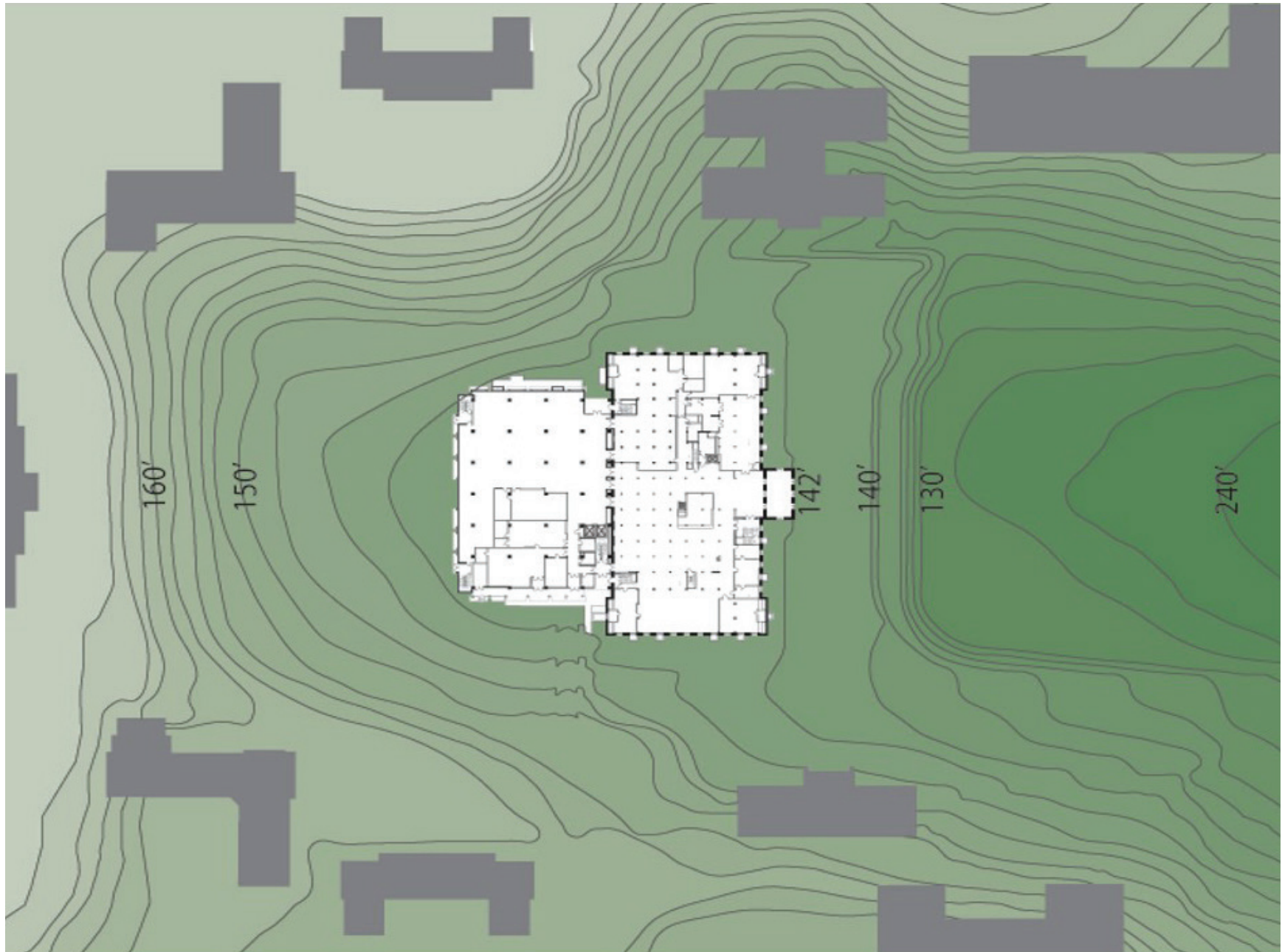




FIGURE 5.10. Site Topography and Site Section by ARCH 601 Spring 2012



.....

**FIGURE 5.11. Front Façade of McKeldin, Which Appeared to Be a Four-story Structure** by Sandra Vicchio

---





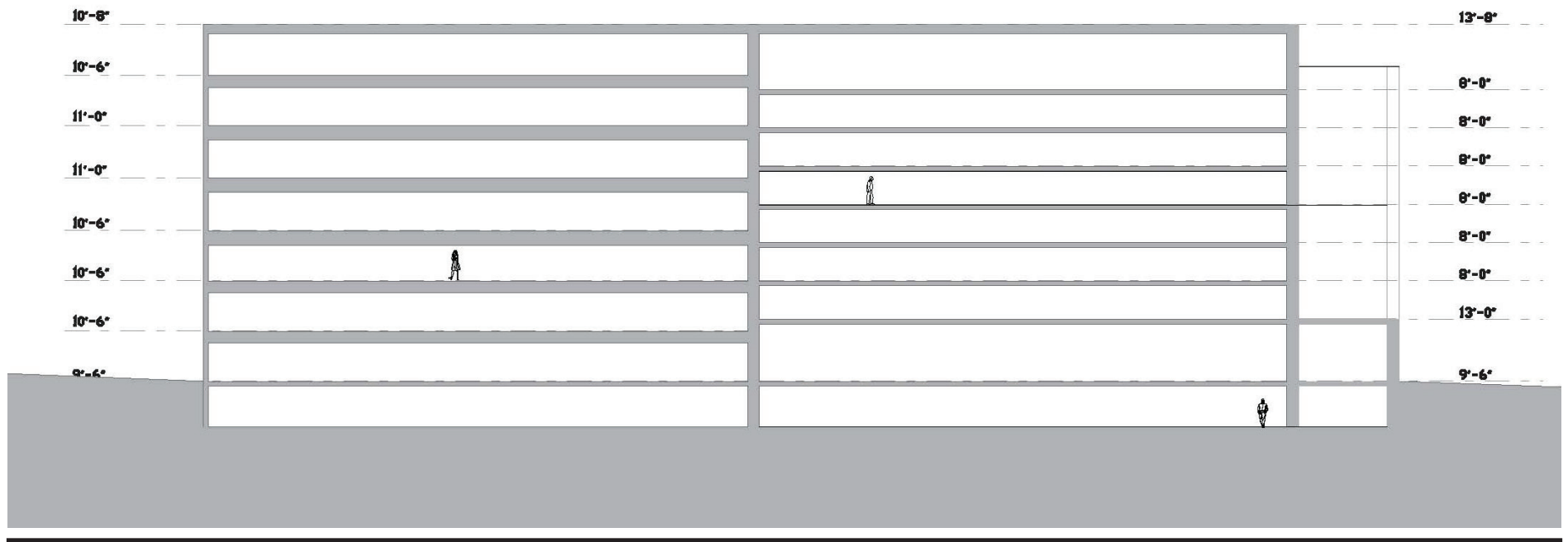
.....

**FIGURE 5.12. Front Façade of McKeldin, with Floor Lines Indicating the Eight-story Structure** by ARCH 601 Spring 2012

---



FIGURE 5.13. Building Section by ARCH 601 Spring 2012



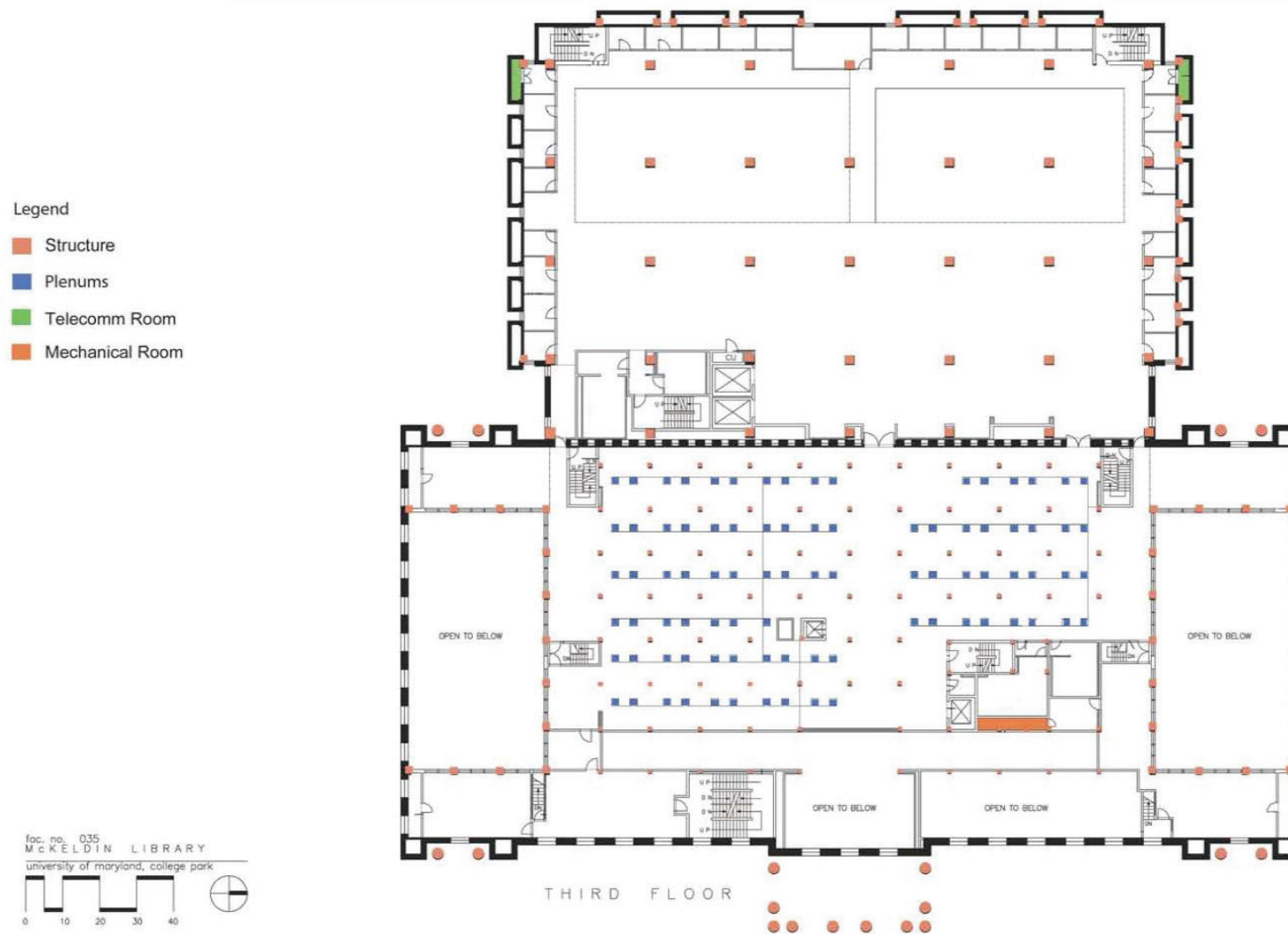
.....  
**FIGURE 5.14. Shelving Detail** by Sandra Vicchio

---





FIGURE 5.15. Mechanical and Structural Plan by ARCH 601 Spring 2012

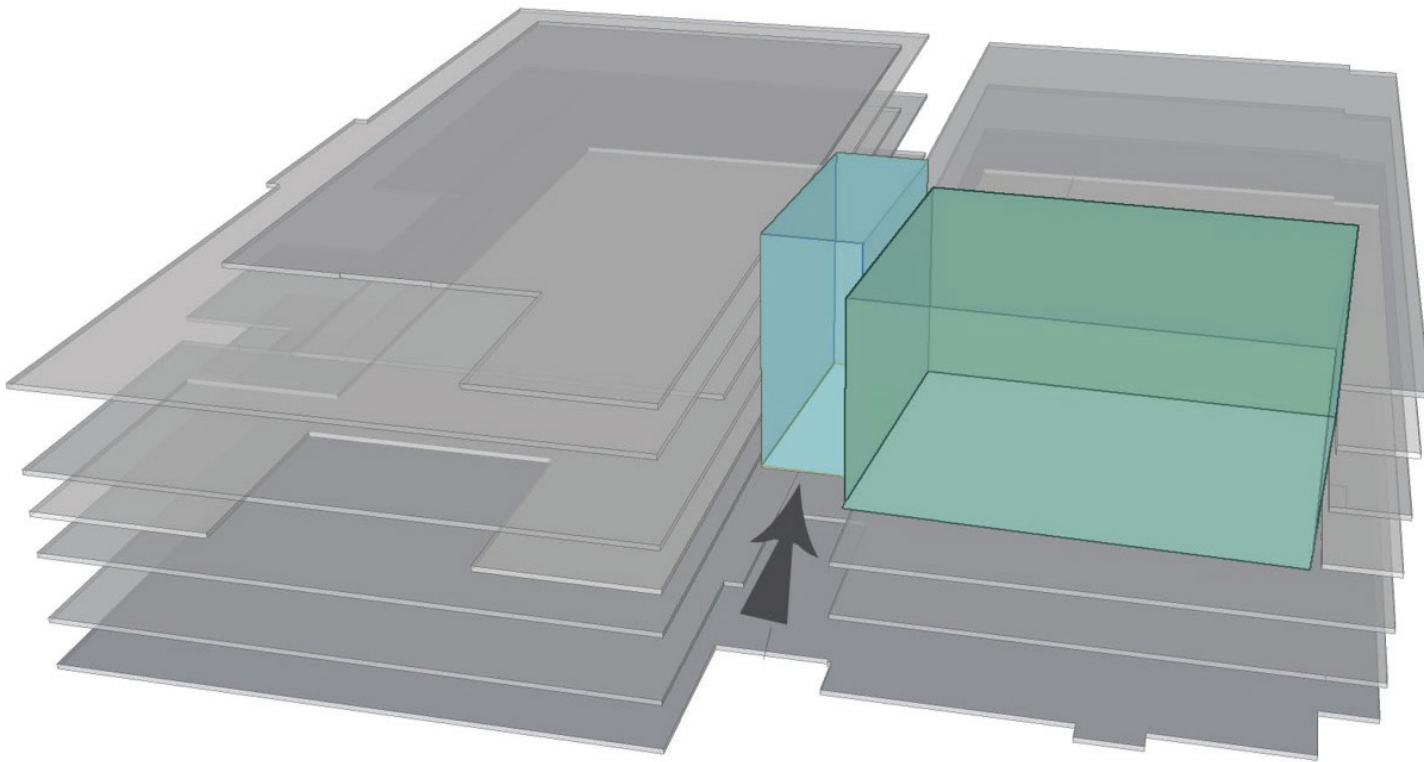


Structure and Mechanical

Floor 3

.....  
**FIGURE 5.16. Information Hub Concept Diagram** by ARCH 601 Spring 2012

---

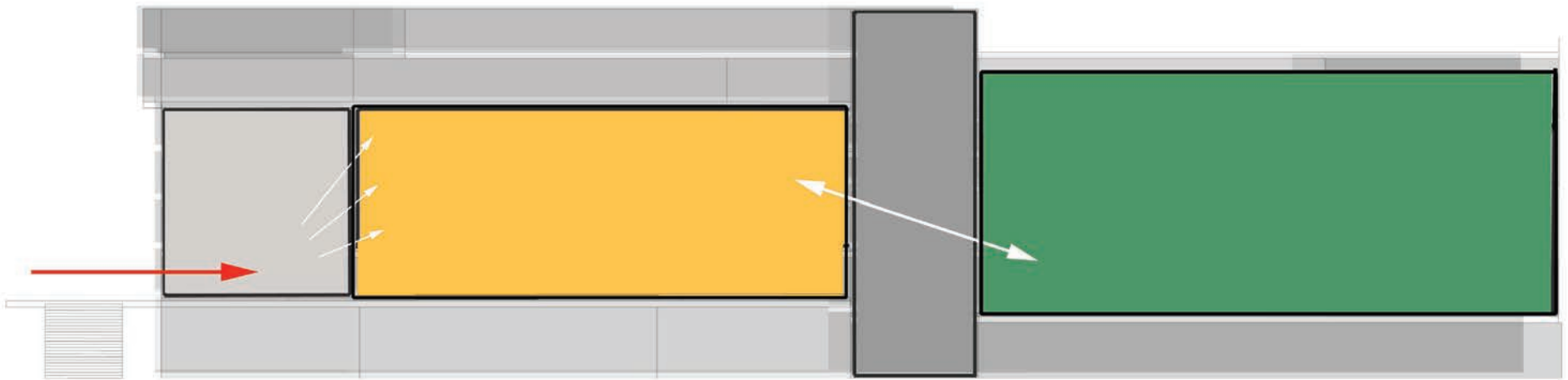




.....

**FIGURE 5.17. Piano Nobile Concept Diagram** by ARCH 601 Spring 2012

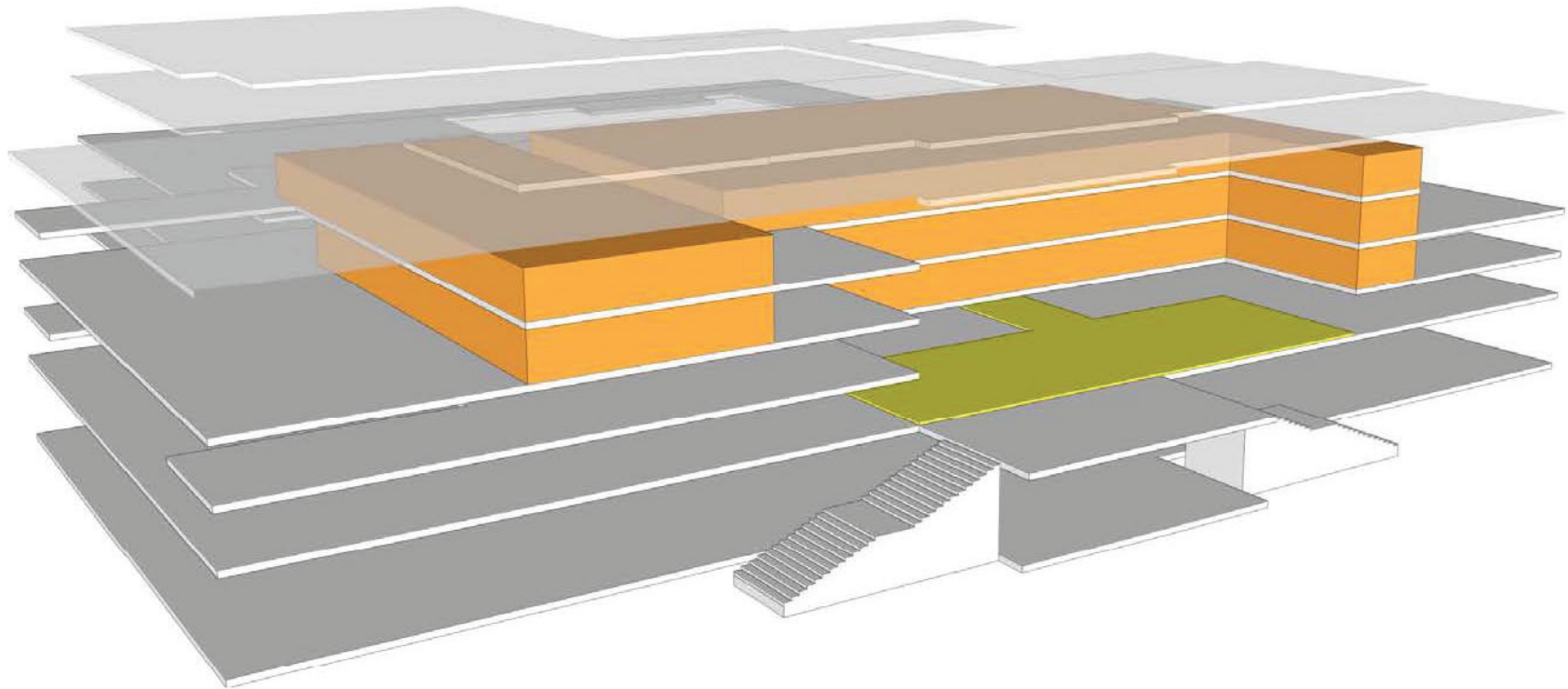
---



.....

**FIGURE 5.18. Books as Heart Concept Diagram** by ARCH 601 Spring 2012

---

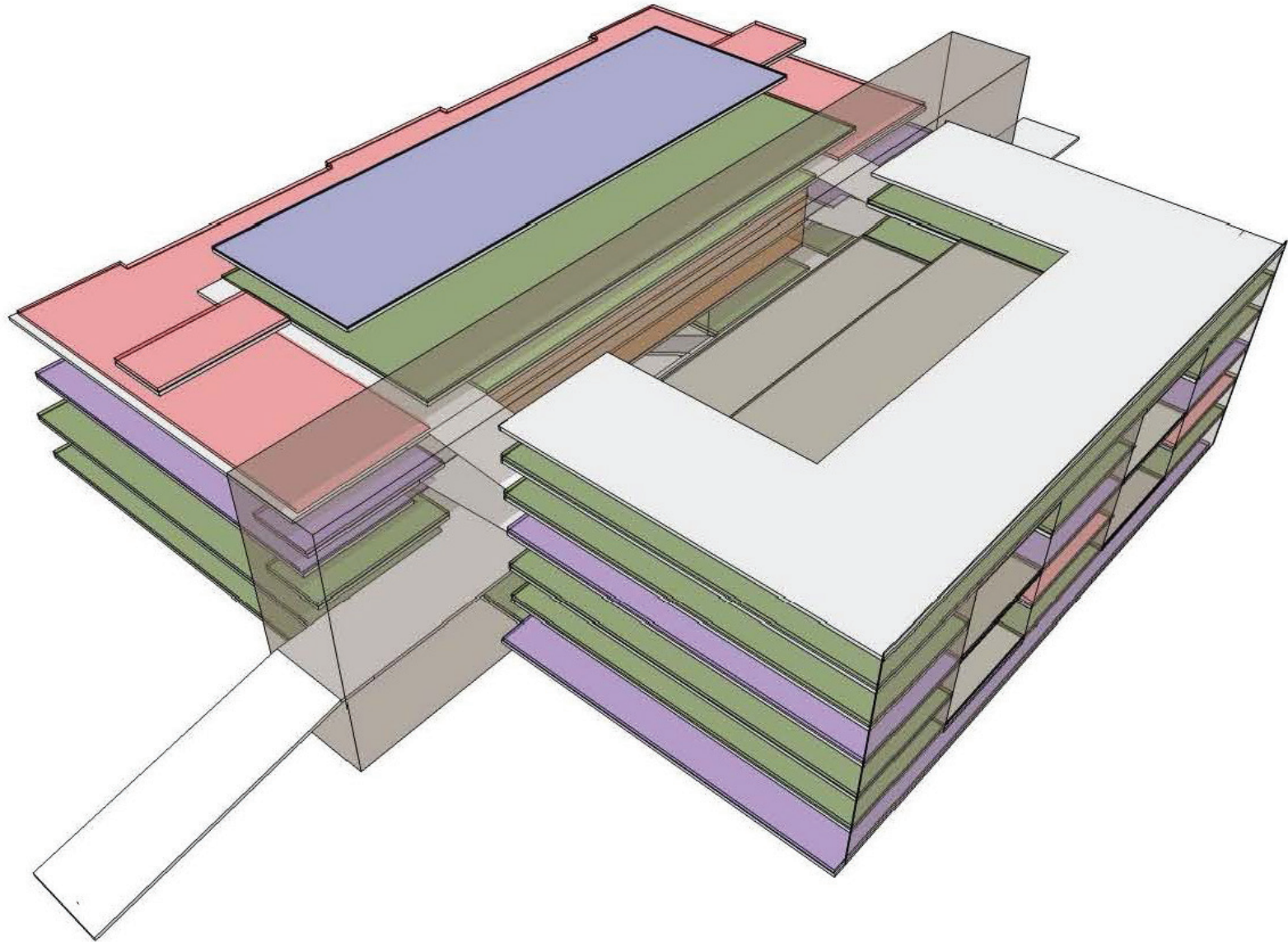




.....

**FIGURE 5.19. Bridging and Connections Concept Diagram** by ARCH 601 Spring 2012

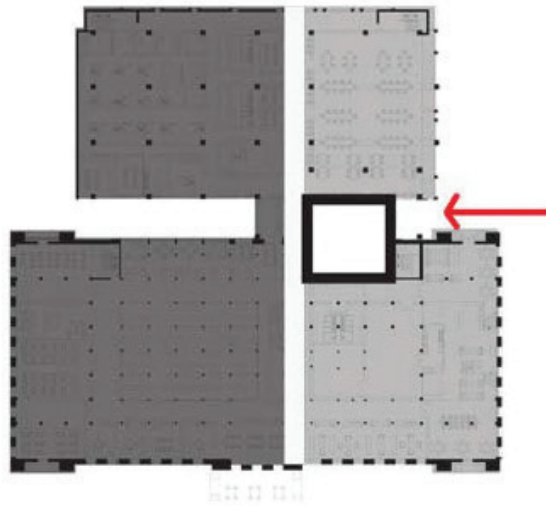
---



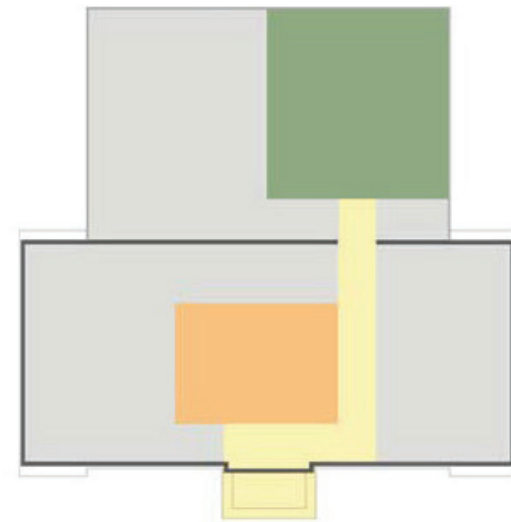
.....

**FIGURE 5.20. Design Concept Diagrams** by ARCH 601 Spring 2012

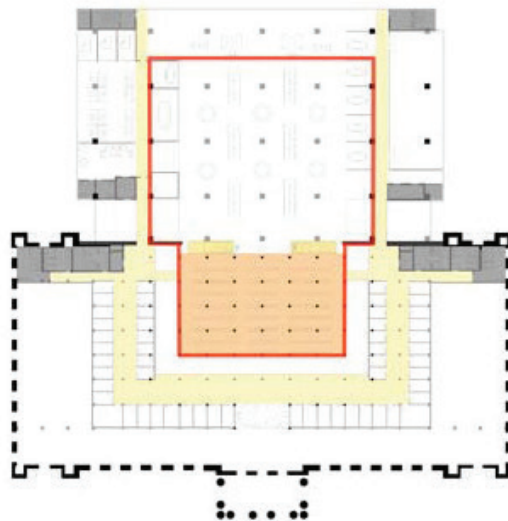
---



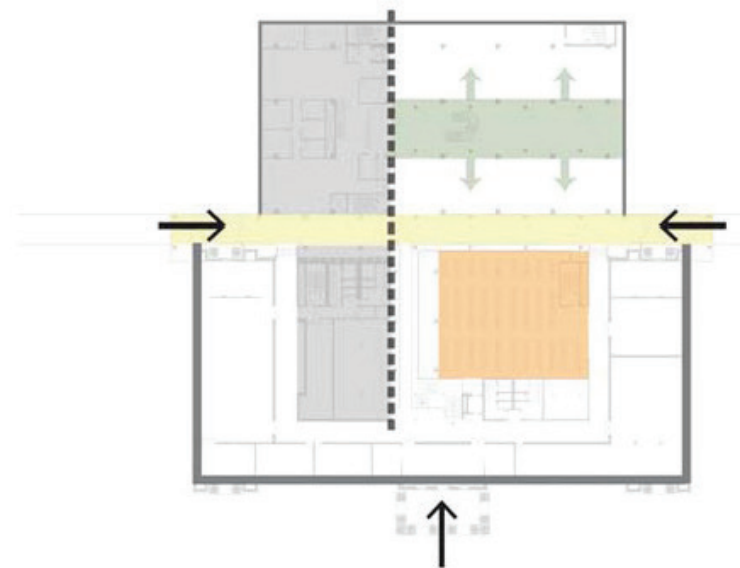
Information Hub



Piano Nobile



Books as Heart



Bridging Connections

---



FIGURE 5.21.A. Building Plans by ARCH 601 Spring 2012



.....  
**FIGURE 5.21.B Building Plans** by ARCH 601 Spring 2012

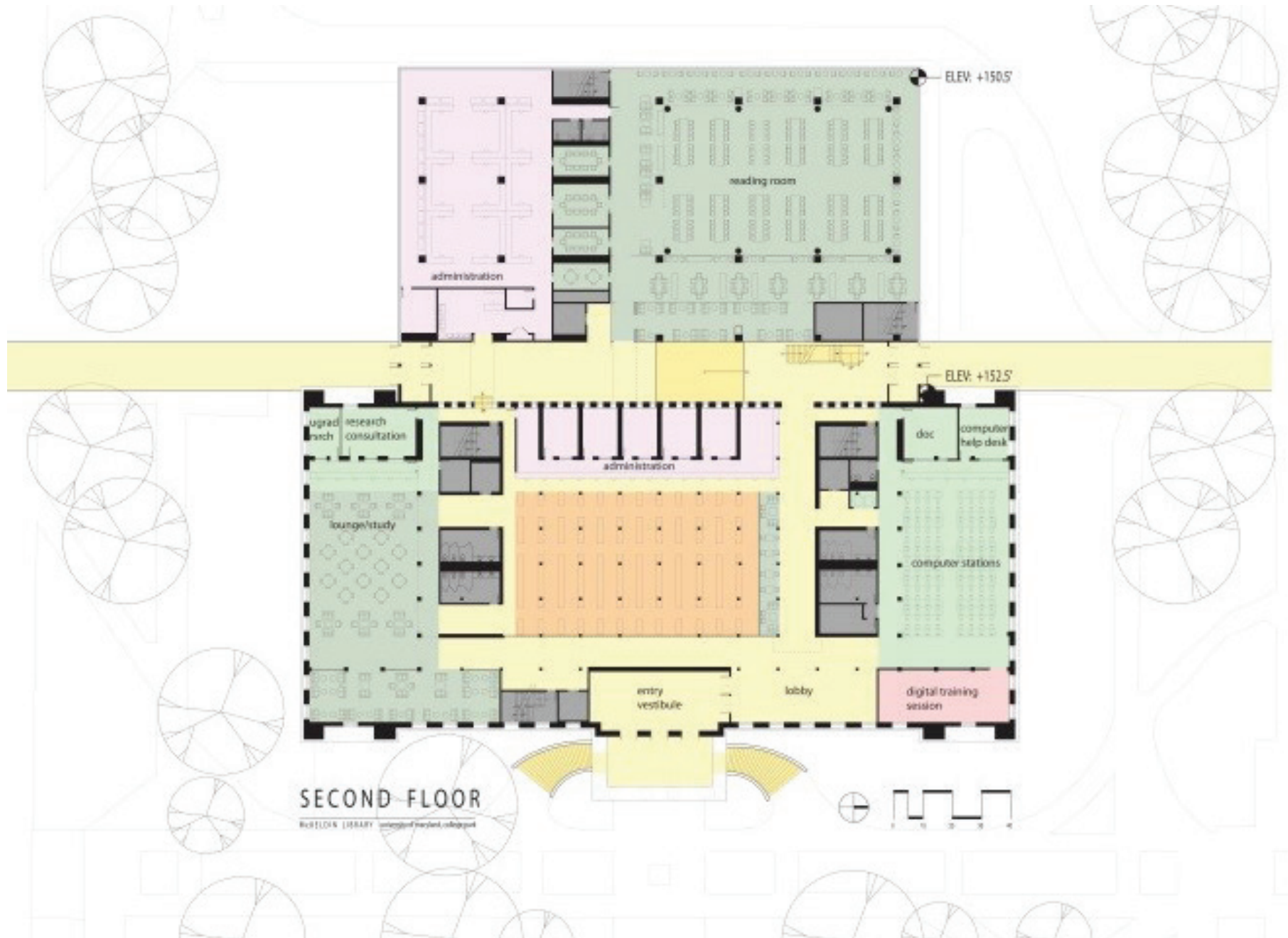




FIGURE 5.22. **Books as Heart** by ARCH 601 Spring 2012

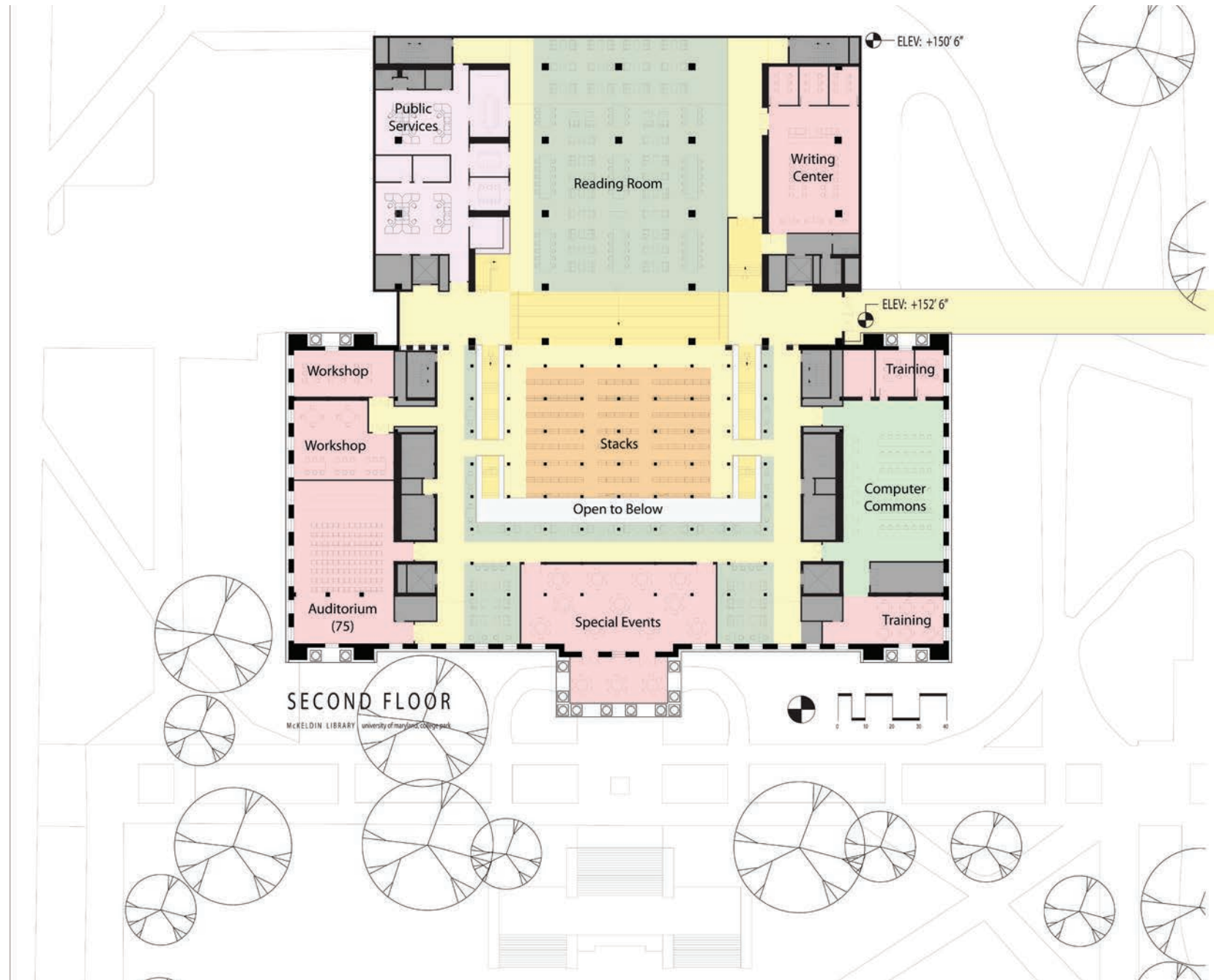


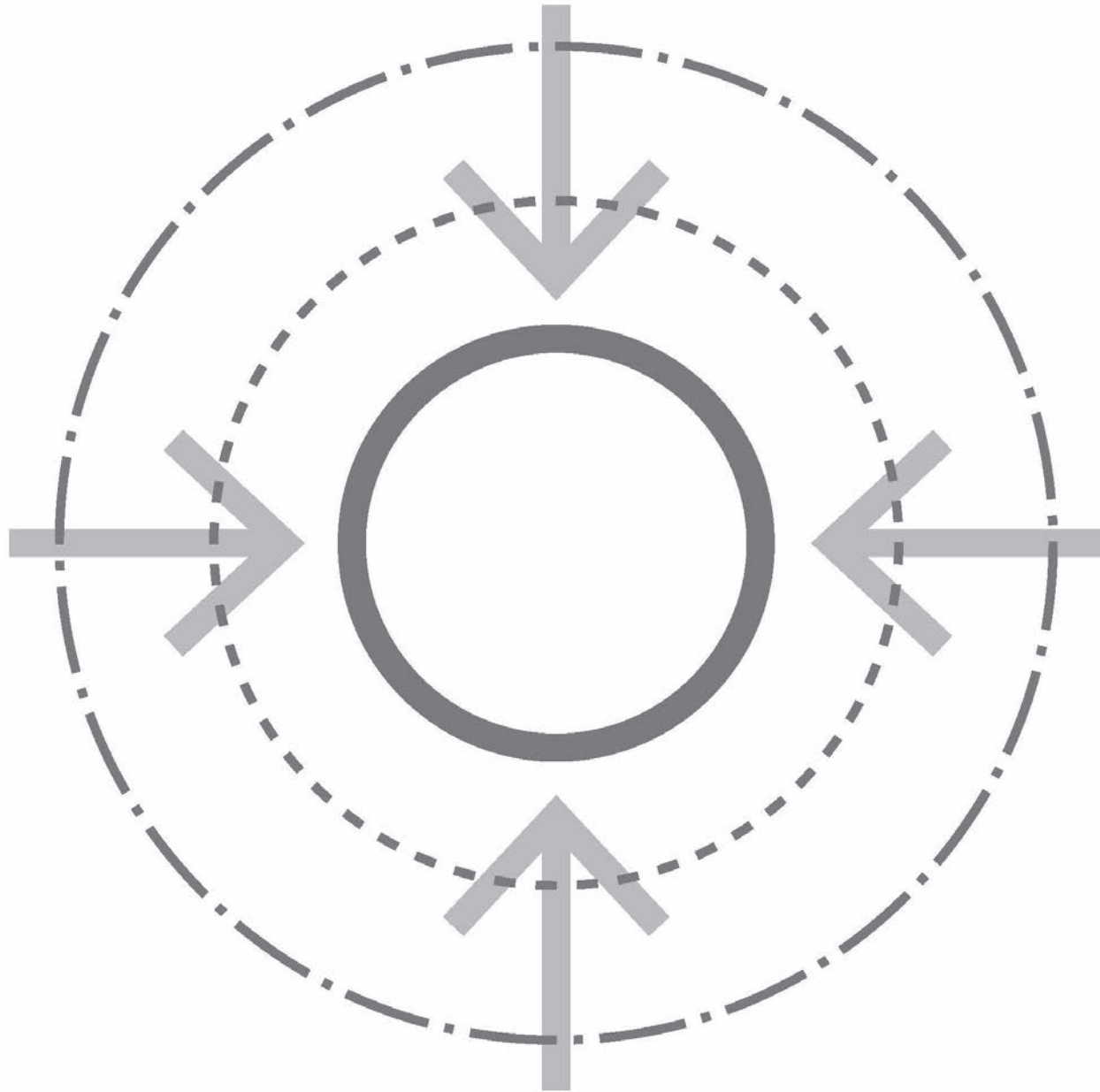
FIGURE 5.22. Books as Heart Bridging and Connections by ARCH 601 Spring 2012





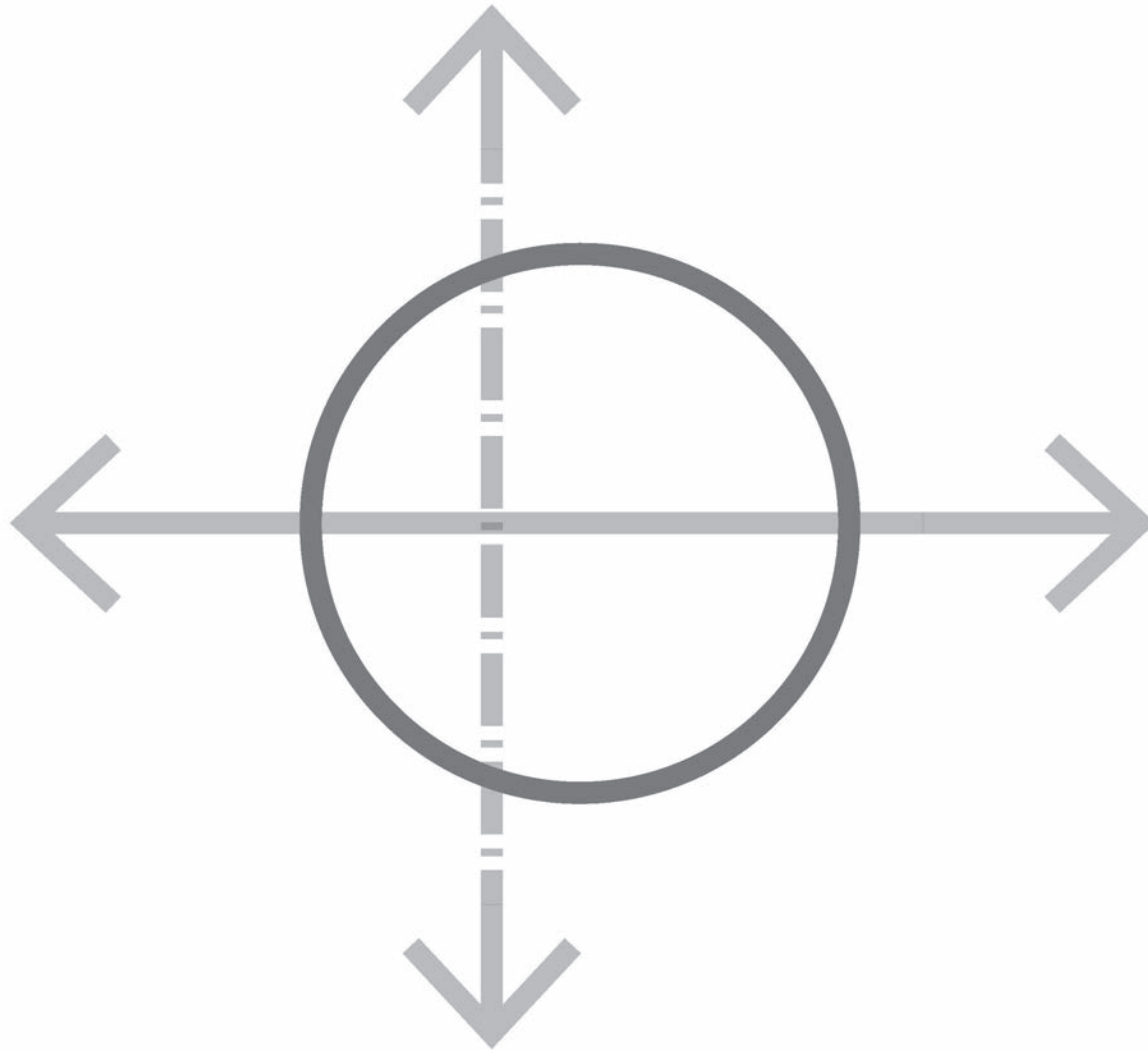
.....  
**FIGURE 5.23. Concept Diagram Books as Heart** by Nicholas Tomaszewski

---



.....  
**FIGURE 5.23. Concept Diagram Bridging and Connections** by Emma Crenshaw

---

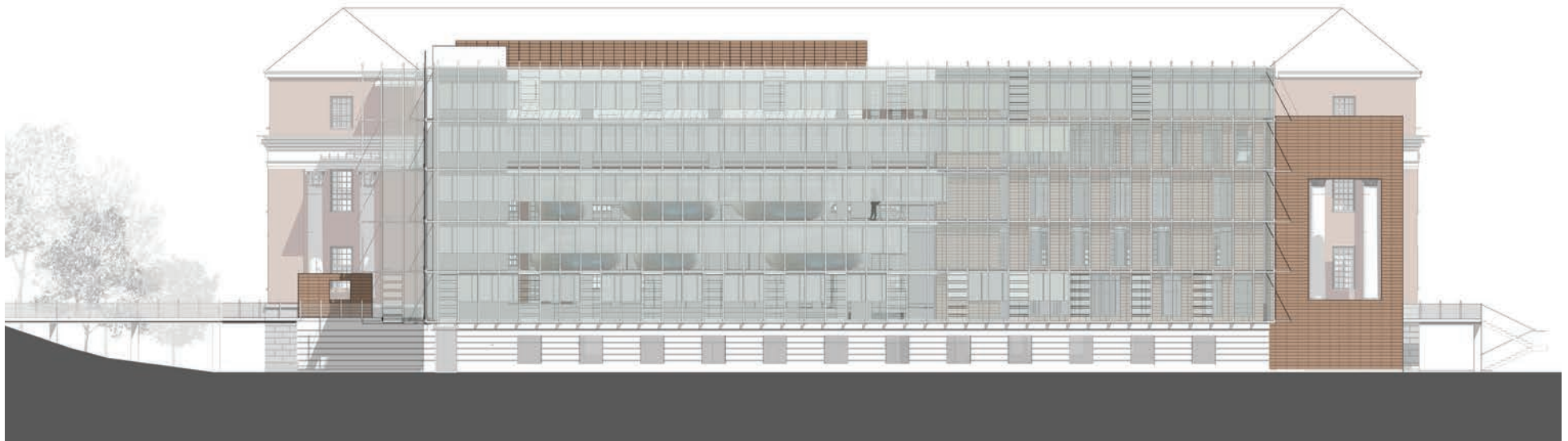




---

**FIGURE 5.24. Bridging and Connections Façade Studies**

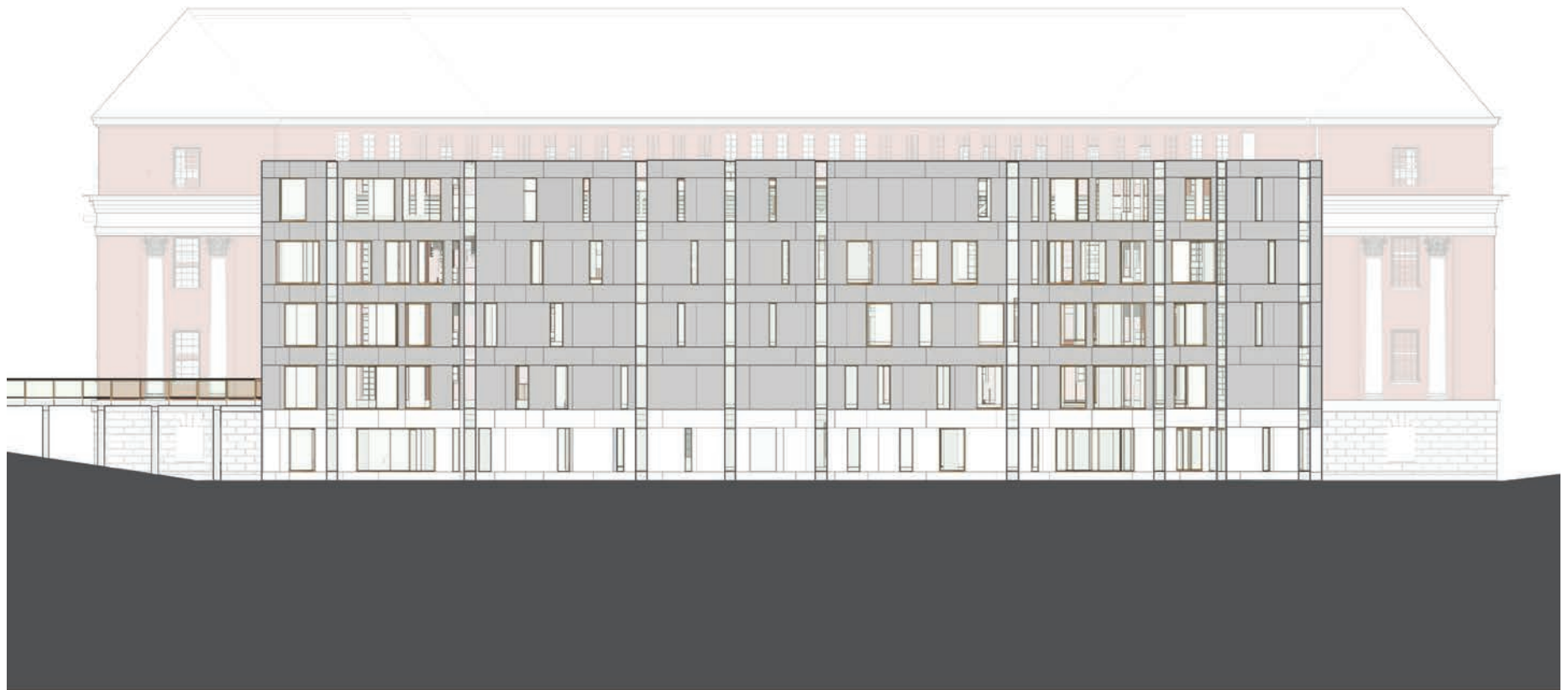
---



Emma Crenshaw. High-performance Façade

---

FIGURE 5.24. Bridging and Connections Façade Studies

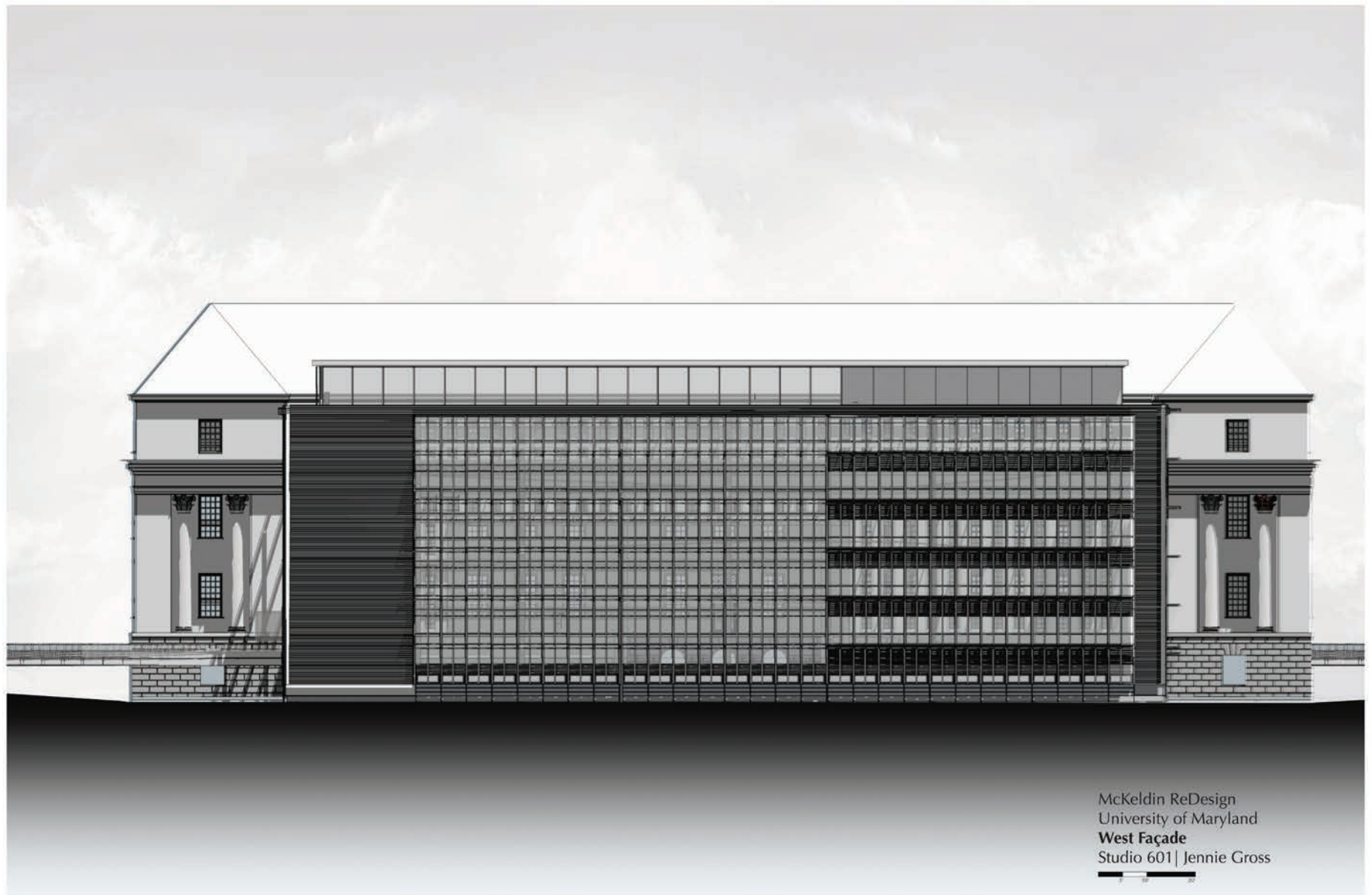


**McKeldin West Elevation**  
M. Friedman | Arch 601



Meredith Friedman. Views Enabled and Concealed

.....  
**FIGURE 5.24. Bridging and Connections Façade Studies**



Jennie Gross. Woven Grids



---

**FIGURE 5.25. Book as Heart Façade Studies**

---



WEST ELEVATION

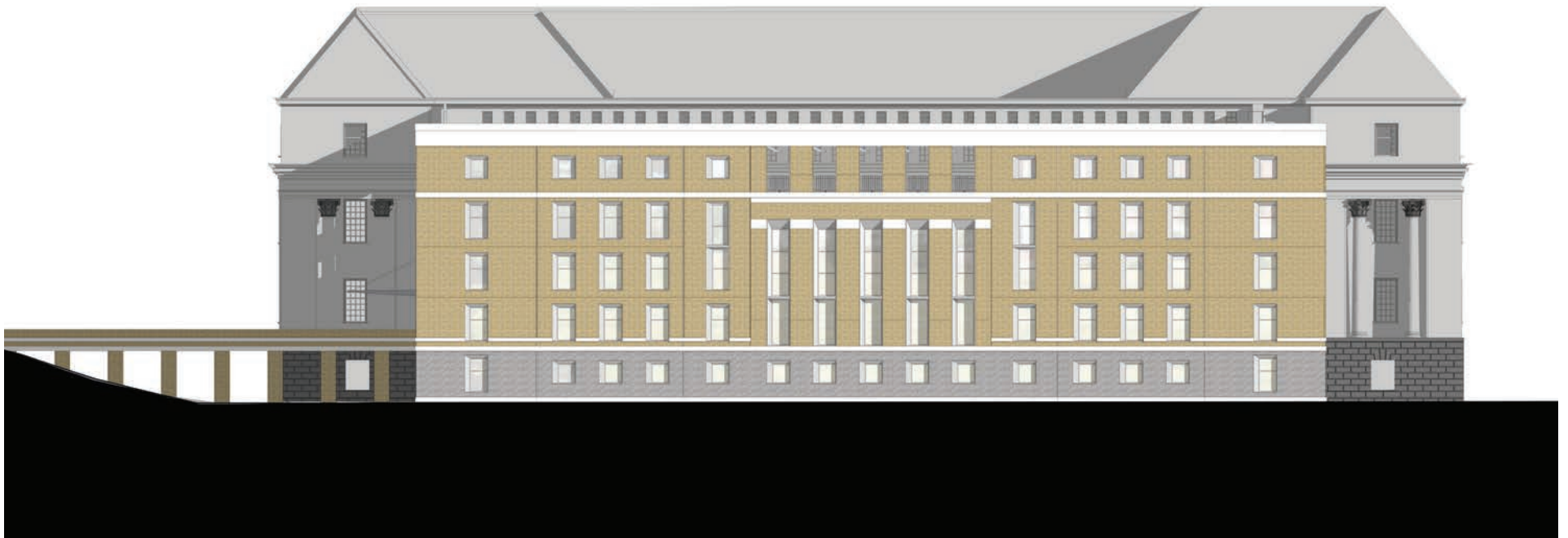
Katlin Pless. Symmetry and Balance

---

---

**FIGURE 5.25. Book as Heart Façade Studies**

---



---

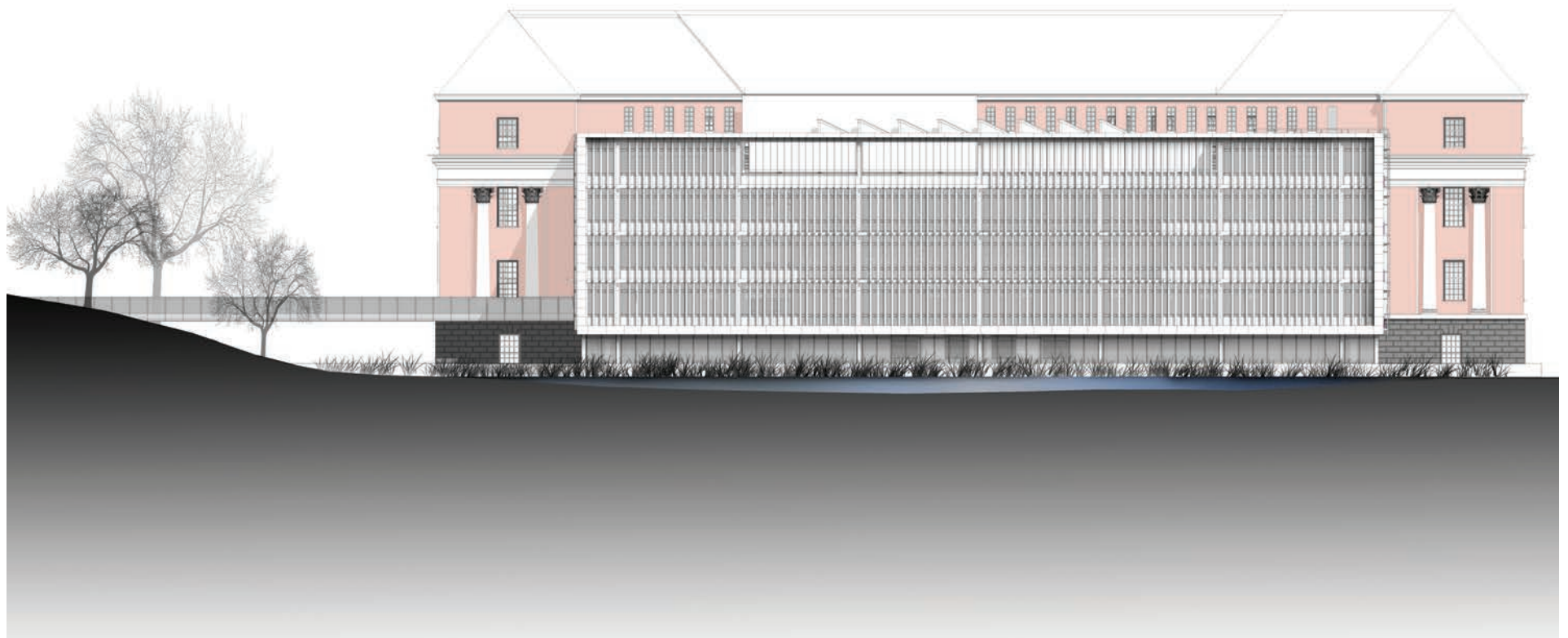
Khara James. Classical Orders and Proportion

---

.....

**FIGURE 5.25. Book as Heart Façade Studies**

---



Nicholas Tomaszewski. Sustainable Façade

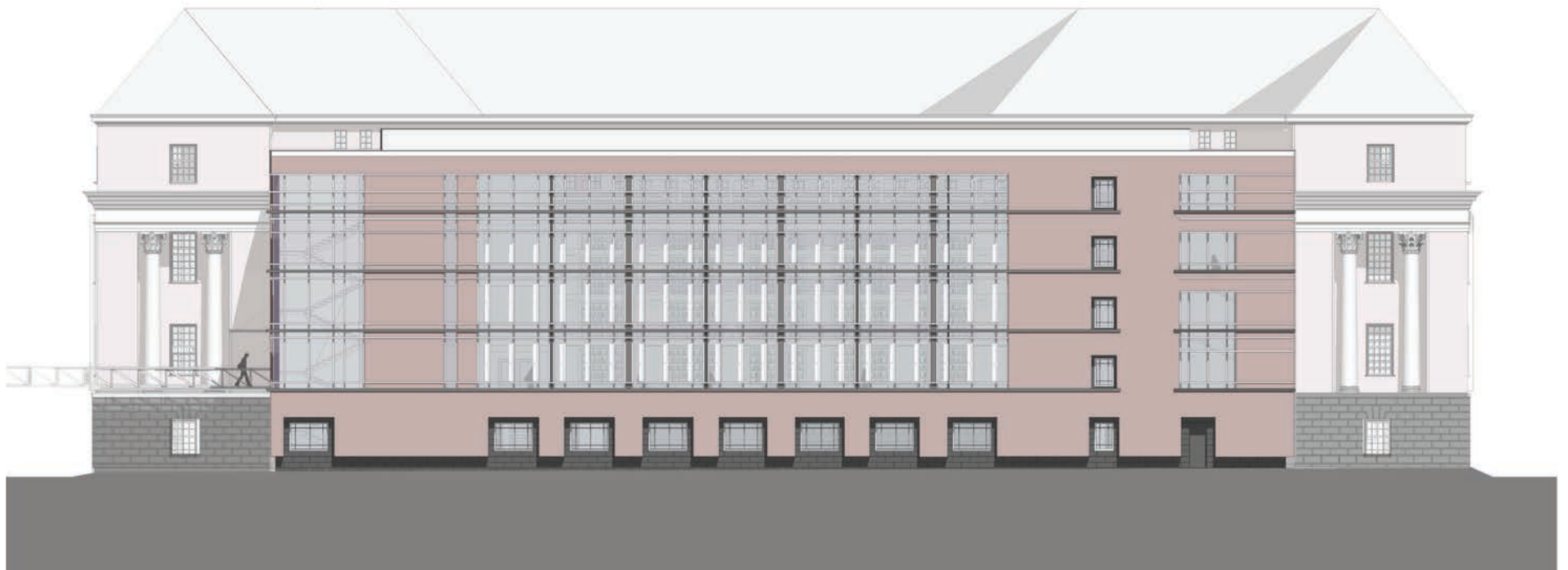
---



---

**FIGURE 5.25. Book as Heart Façade Studies**

---

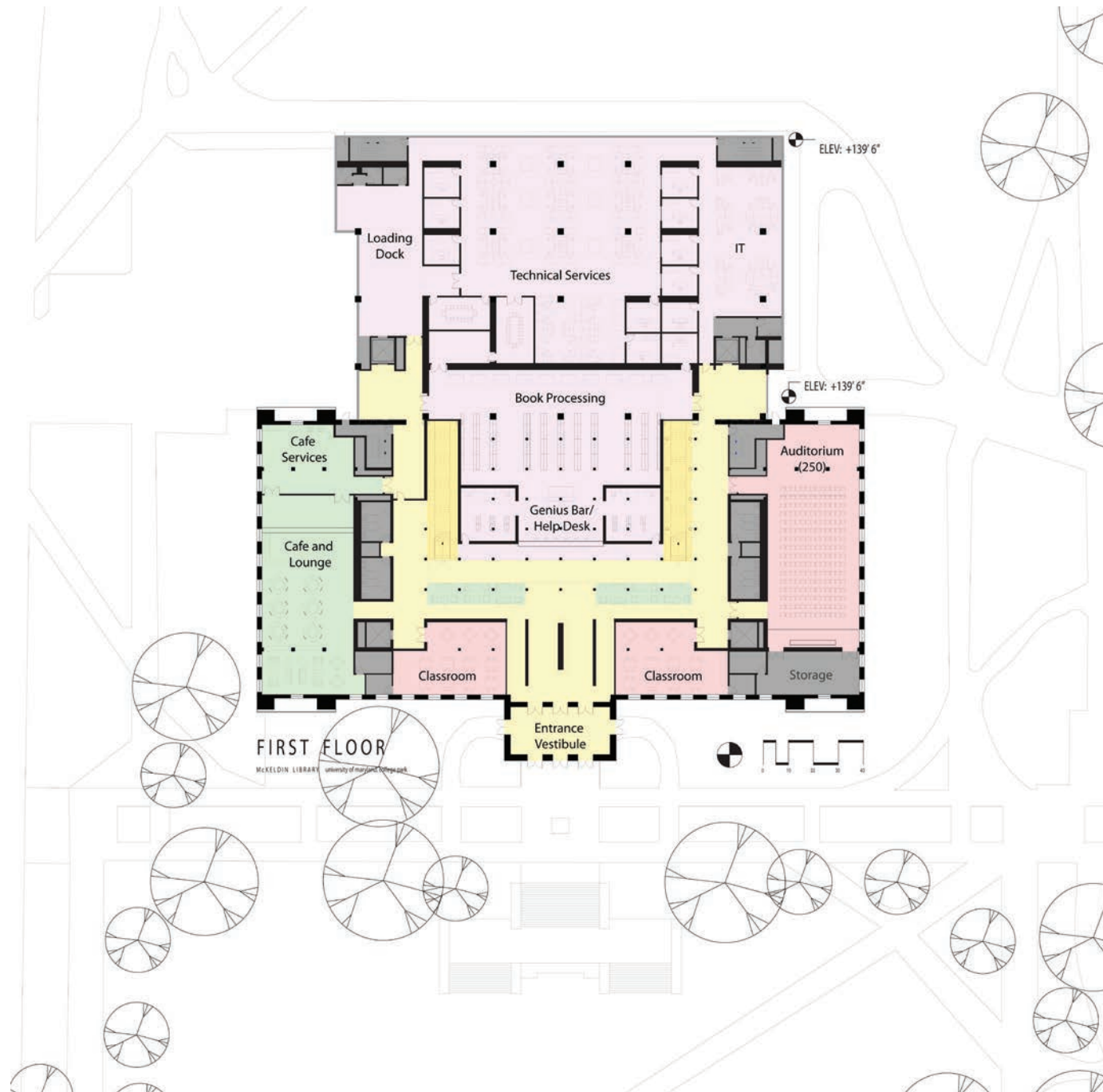


---

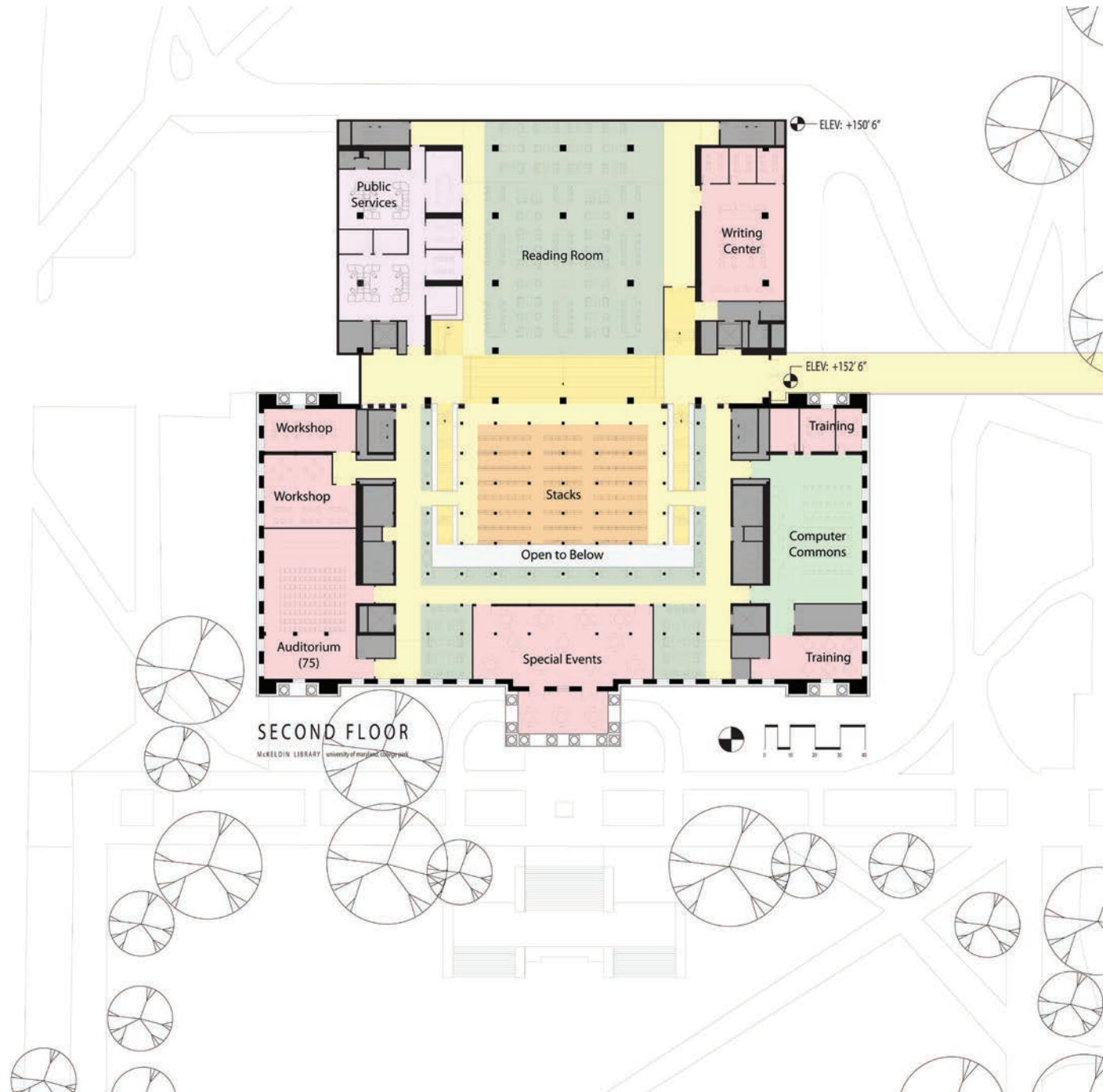
Caitlin Latini. Stretching the Mind

---

## APPENDIX 5.2 **Books as Heart Plans** by Arch 601 Spring 2012

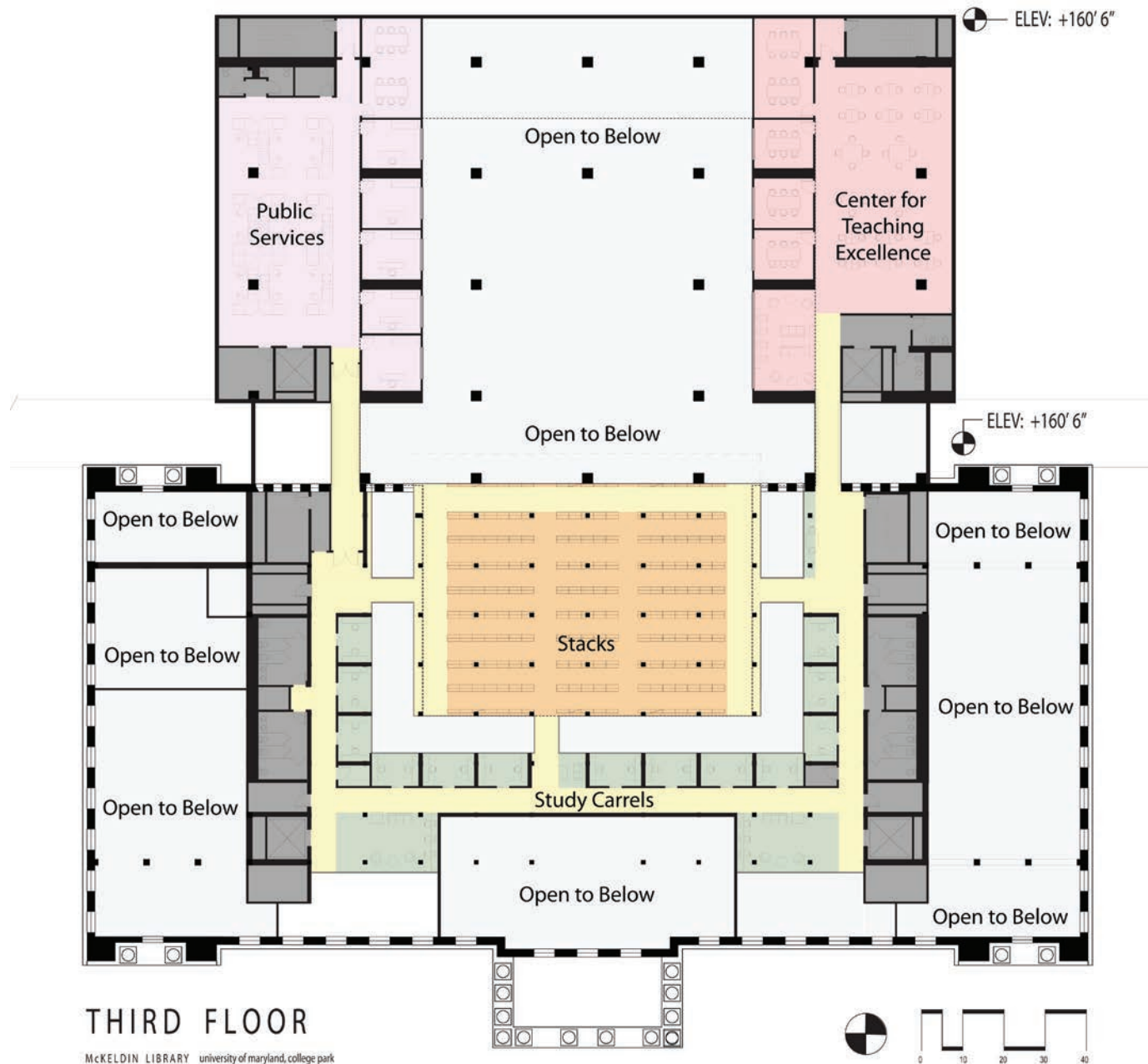


## APPENDIX 5.2 **Books as Heart Plans** by Arch 601 Spring 2012





## APPENDIX 5.2 **Books as Heart Plans** by Arch 601 Spring 2012



## APPENDIX 5.2 **Books as Heart Plans** by Arch 601 Spring 2012



## APPENDIX 5.2

# Books as Heart Plans

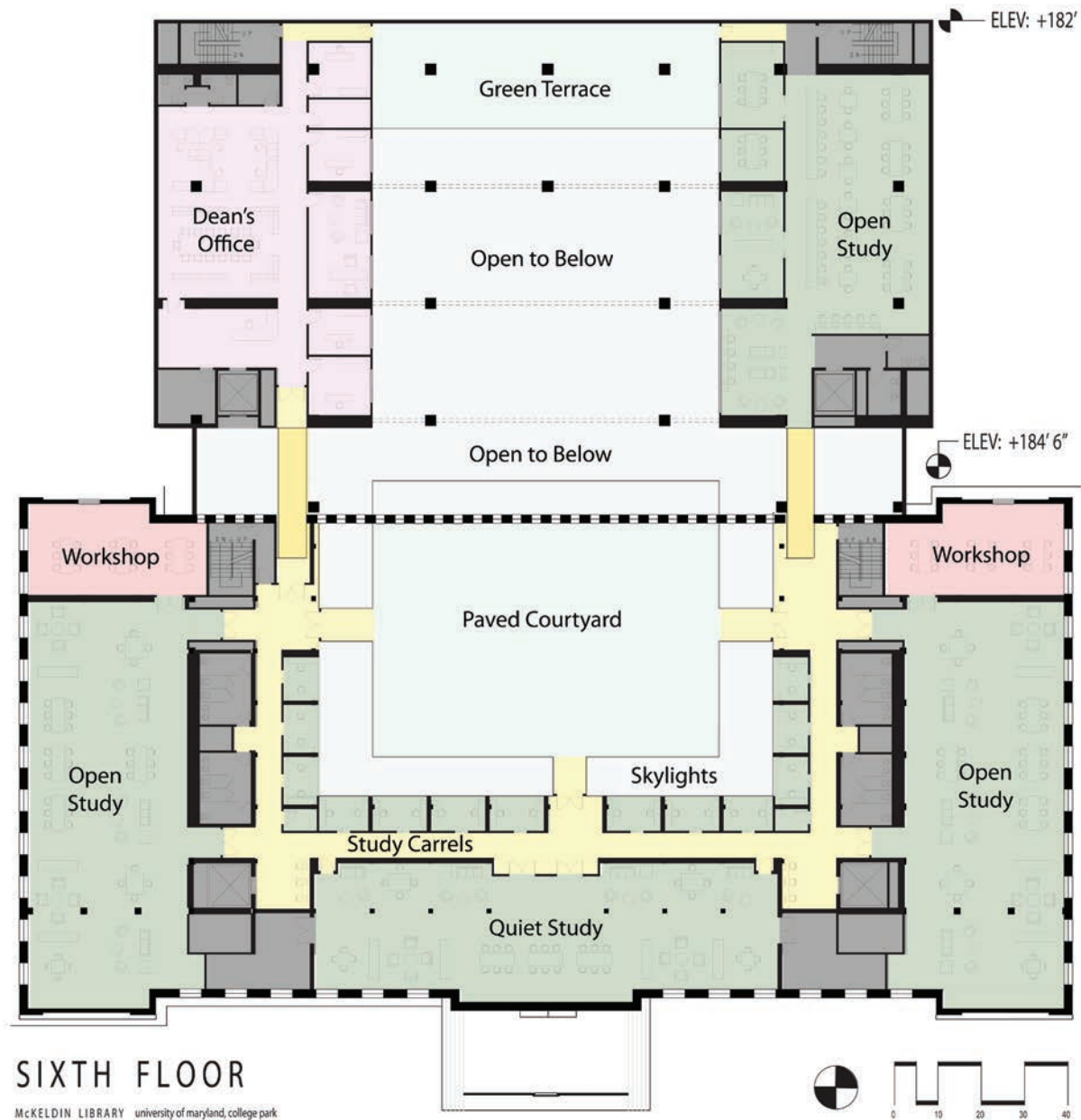
by Arch 601 Spring 2012



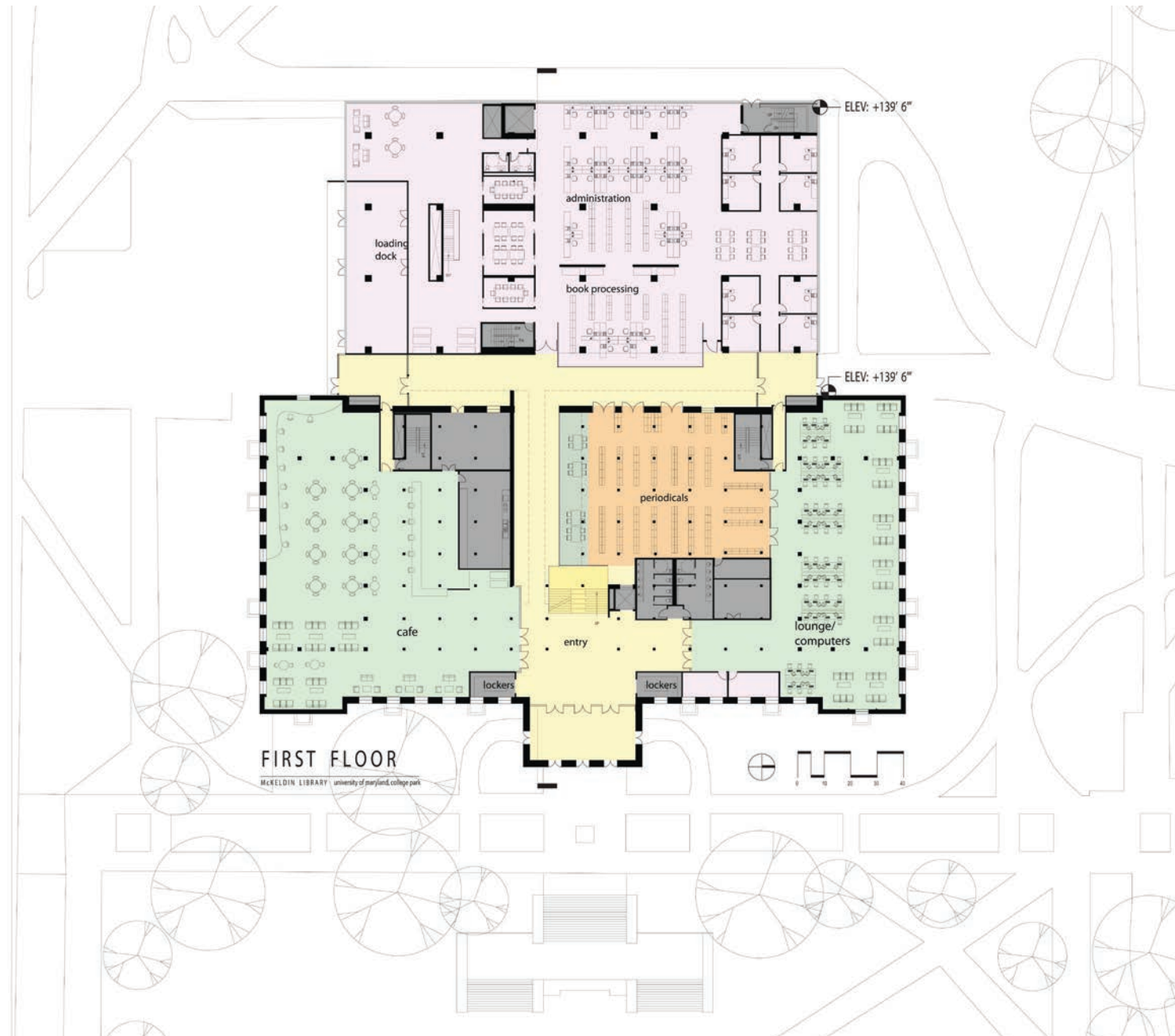
McKELDIN LIBRARY university of maryland, college park



## APPENDIX 5.2 **Books as Heart Plans** by Arch 601 Spring 2012



## APPENDIX 5.3 **Bridges and Connection Plans** by Arch 601 Spring 2012

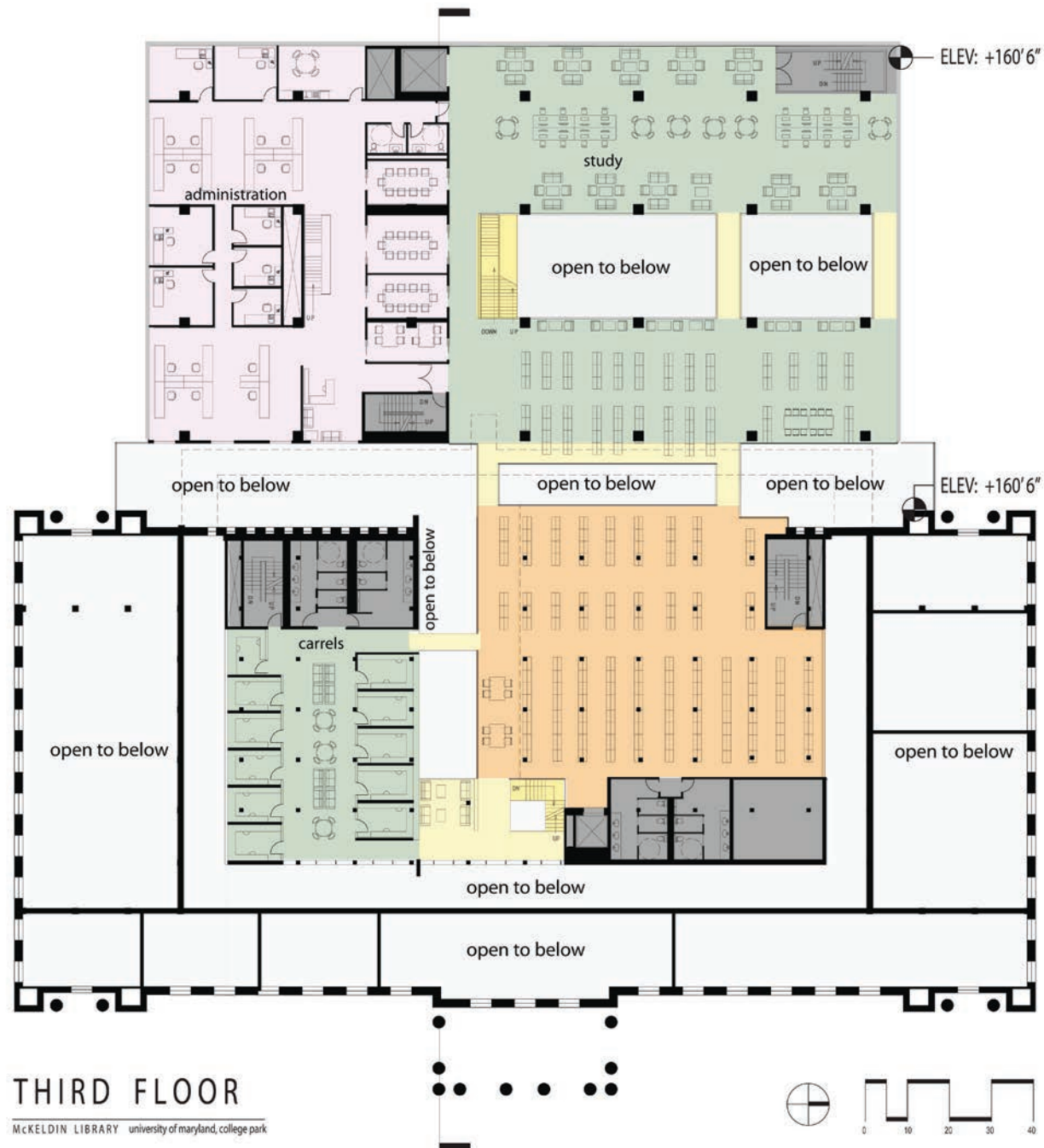


# APPENDIX 5.3 Bridges and Connection Plans by Arch 601 Spring 2012





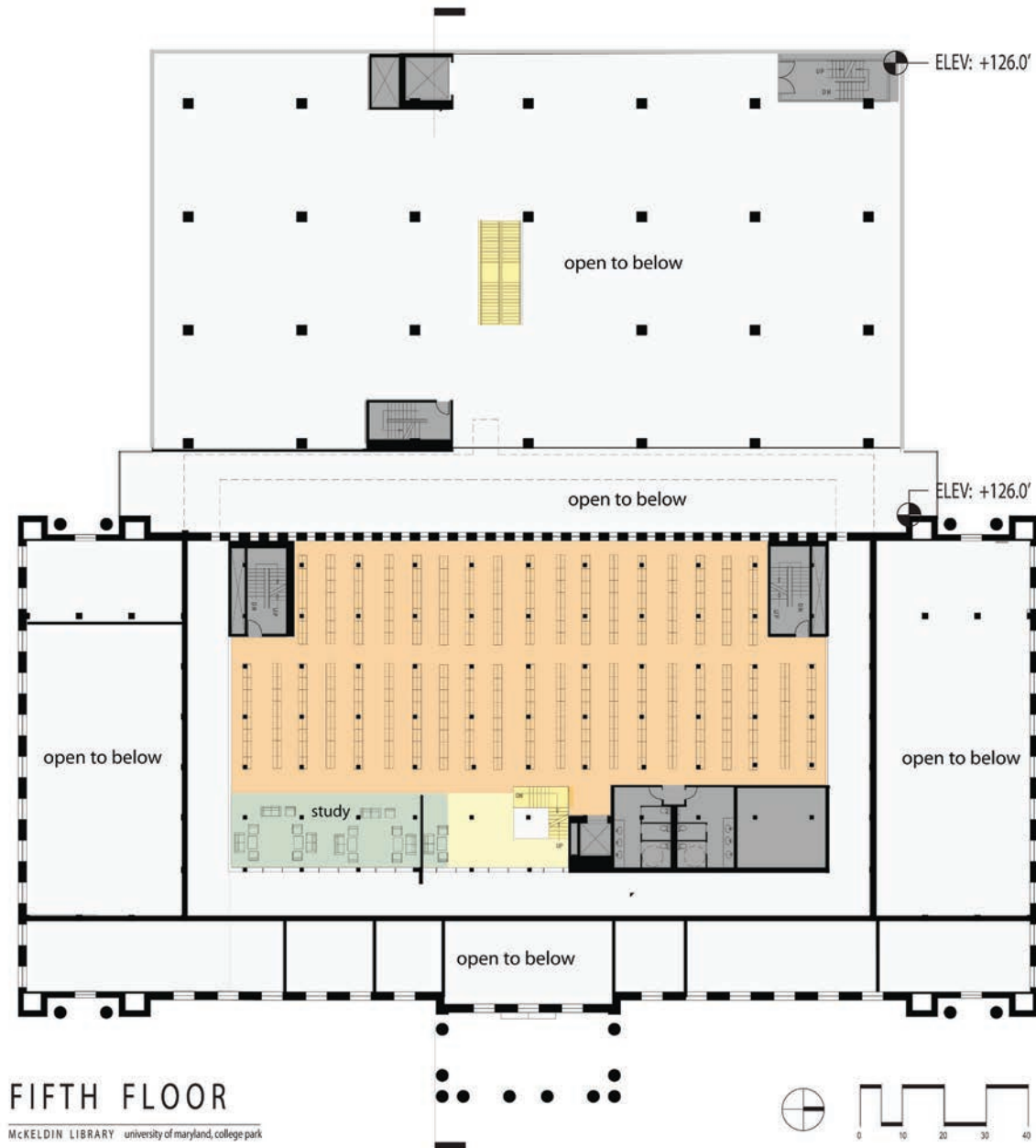
## APPENDIX 5.3 Bridges and Connection Plans by Arch 601 Spring 2012



## APPENDIX 5.3 Bridges and Connection Plans by Arch 601 Spring 2012

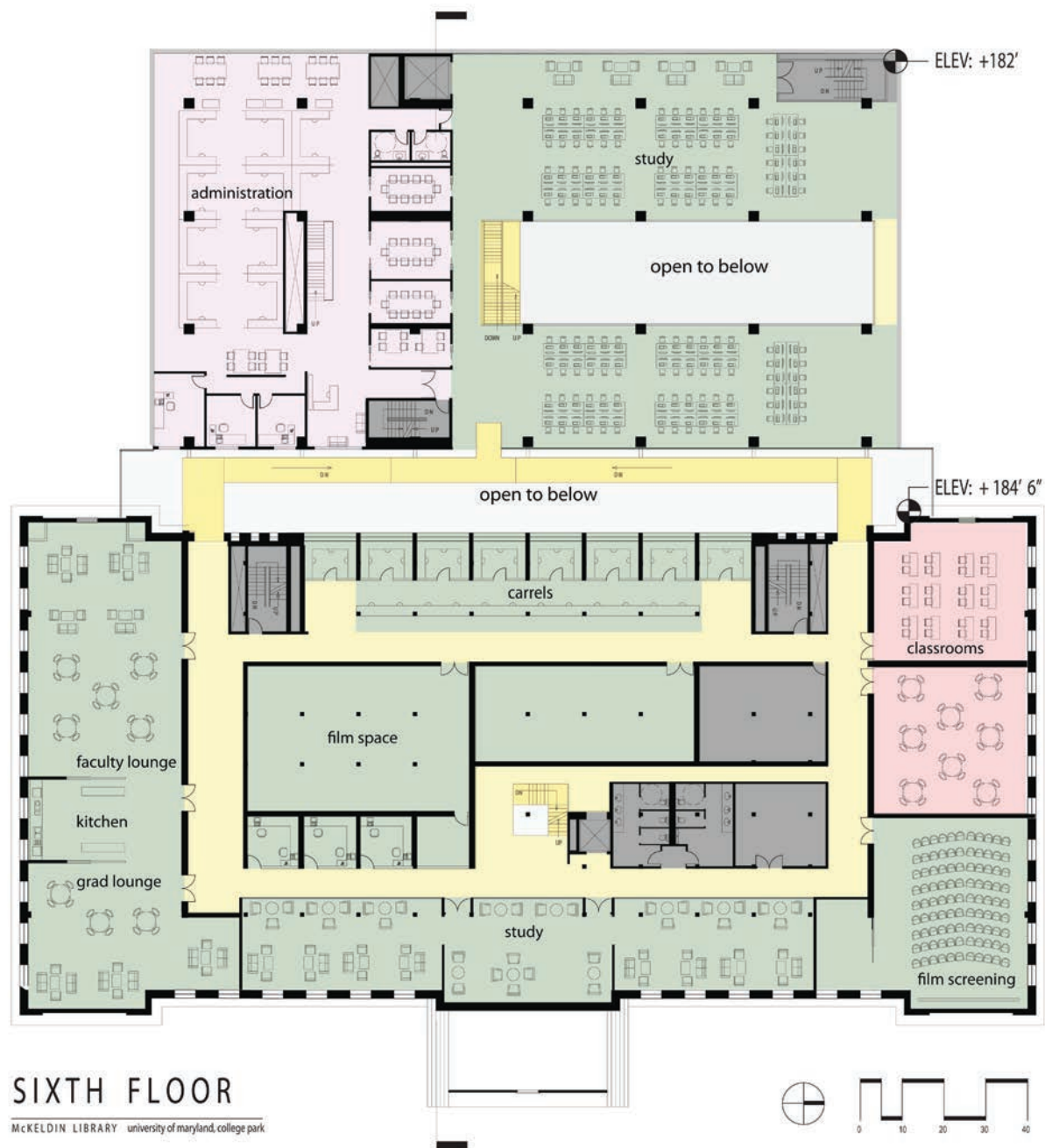


## APPENDIX 5.3 Bridges and Connection Plans by Arch 601 Spring 2012





## APPENDIX 5.3 Bridges and Connection Plans by Arch 601 Spring 2012



## APPENDIX 5.3 Bridges and Connection Plans by Arch 601 Spring 2012

