

ABSTRACT

Title: COSTUME DESIGN FOR RENT

Adriana Carolina Díaz, M.F.A., 2012

Directed By: Professor Helen Huang, Department of Theatre,
Dance, and Performance Studies

The following thesis documents the costume design process and execution for the production of *Rent* by Jonathan Larson. Supporting documents included are research, renderings, fabric samples, fitting photographs, and production photos. The Production presented in this paper was produced October 21, 2011 at the University of Maryland in the Ina and Jack Kay Theater a six hundred and fifty seat proscenium theatre. Alan Mingo Jr. directed the production, the set was designed by Douglas Clarke, the lighting was designed by Andrew Dorman, the projection design was designed by Jedediah Roe, and the sound was designed by Neil McFadden.

COSTUME DESIGN FOR RENT

Adriana Carolina Díaz

Thesis submitted to the Faculty of the Graduate School of the
University of Maryland, College Park, in partial fulfillment
of the requirements for the degree of

Master of fine Arts

2012

Advisory Committee:

Professor Helen Huang, Chair

Professor Brian MacDevitt

Associate Professor Misha Kachman

© Copyright by
Adriana Carolina Díaz
2012

TABLE OF CONTENTS

APPENDIX A: PRE PRODUCTION MATERIALS	
DESIGN CONCEPT AND STATEMENT	1
RESEARCH IMAGES	4
RENDERINGS.....	23
APPENDIX B: PROCESS	
FITTING PHOTO'S AND FABRIC SWATCHES.....	60
DISTRESSING REFERENCE MATERIAL.....	75
APPENDIX C: SUPPORTING PAPER WORK	
COSTUME PLOT.....	81
COSTUME PIECE LIST.....	87
APPENDIX D: PRODUCTION PHOTOGRAPHS.....	96
BIBLIOGRAPHY.....	110

APPENDIX A: DESIGN CONCEPT STATEMENT

“ The wider world perceives fashion a frivolity that should be done away with in the site of social upheavals and problems that are enormous. The point is in fact that fashion is the armor to survive the reality of every day life.”

- Bill Cunningham 1989

The chaotic guitar and the infectious drum beat of the first number, “Rent” has an overactive pulse that pulls the audience into this rock opera with a sense of urgency and liveliness. *Rent* embraces life with a sense of unashamed acceptance. For many of the characters in *Rent*, their world does not exist in the bleak cold streets of New York, but instead exists in a world of acceptance, love, and vibrancy. It was imperative that the costumes expressed this joy that the characters so readily embraced and created relationships with the audience.

By pushing the saturation of the colors on the homeless and creating individual ensemble characters, I was able to create a framework for the world that pushed away from the bleak exterior and chilling atmosphere created by the scenic and lighting designs. The most vivid example of this was through the life and evolution of Angel’s costumes. Though Angel is a drag queen, she is not a man who wants to be a woman. Angel is able to create unique outfits that give her freedom to be herself. Dresses are her form of expression that become her armor from the cruelty of life.

Angel’s costumes needs to reflect how deeply she cares about those around her and how she brings them together. It was through Pussy Galore’s costume that I best captured this quality. The pictures on Angel’s dress brought together images of

APPENDIX A: DESIGN CONCEPT STATEMENT

friends, past and present, in celebration of all the lives she has known. By developing a language for the show that embodies the characters love for life, it becomes more jarring when we fall back into reality. With the slow plucks of the guitar during “Without You” we return to that bleak world. The soft white lifeless drape of Angel’s final costume feels so cold, weighted down by the breathless pauses of life passing. The lack of the life and care that we have become accustomed to in Angel, is not present in this moment, almost stripping all the warmth that her presence normally provides. The costume made Angel more vulnerable allowing the audience to have more compassion for Collins during the soul wrenching cries in the “I’ll Cover You Reprise”.

Unlike Angel, Roger has lost his way to express love and has become encompassed with hopelessness and despair. Roger screams in pain, unable to protect himself from his fears, his brooding look causing him to slink into his empty world. From the dull green of his simple henley to the coldness of his worn in leather jacket, Roger smothers himself in his pain thus fading into the world around him. It is not until his return from Santa Fe at the end of the show that we see him starting to redeem his life. With the soft strums of the acoustic guitar the moonlight hits Roger’s back, his white shirt giving the sense of new innocence in the light of true love. Roger’s painful journey culminating with the discovery of joy through his love for Mimi, leaves the audience with a sense of re-found hope.

The message of joy and happiness found in moments of despair is one that rings true for any generation. However, I was worried that the younger generation

APPENDIX A: DESIGN CONCEPT STATEMENT

would not be able to make personal relationships with the costumes, losing the sense of intimacy created by the original production. As a thirteen year old girl seeing *Rent* for the first time, I felt an immediate connection with the characters through their costumes. Some costumes reflected my wardrobe while others inspired a new one. It was important to me that the costumes not only served the period, but were able to create a link for a 2011 audience. I used the modern emergence of the hipster fashion in our current society to open a window and make Mark a recognizable part of our culture. Though he is typically depicted with glasses, selecting the right Woody Allen inspired frames gave him a unique relationship with this audience.

Fashion is an intimate part of our daily lives; reflecting where we are, and who we are as people. Like the honest unfiltered piano of “Seasons of Love” the costumes display the souls of the characters and their resilience to the uncertainty of tomorrow. By finding ways that the silhouettes become familiar and exciting to a new audience, *Rent* continues shaking people to their core.

APPENDIX A: RESEARCH IMAGES



Mark Research Plate

APPENDIX A: RESEARCH IMAGES



Angel as a man Research plate

APPENDIX A: RESEARCH IMAGES



Angel wrapping paper dress Research Plate

A collage of fashion images. Top left: Two sleeveless dresses covered in colorful fabric flowers, hanging on hangers. Top right: A woman in a bright yellow plaid suit, beret, and gloves, sitting on a stone ledge by water. Middle left: A woman in a white mini dress with a large black belt and a voluminous, multi-colored feathered collar. Middle right: A woman in a yellow dress with large white polka dots. Bottom left: A close-up of a woman's face. Bottom center: A skirt featuring a collage of Pepsi logos. Bottom right: A brown patterned dress with a red collar and a green scarf.

Angel Research Plate

APPENDIX A: RESEARCH IMAGES



Roger Research Plate

APPENDIX A: RESEARCH IMAGES



Roger Main Research Image

APPENDIX A: RESEARCH IMAGES



Mimi Research Plate

APPENDIX A: RESEARCH IMAGES



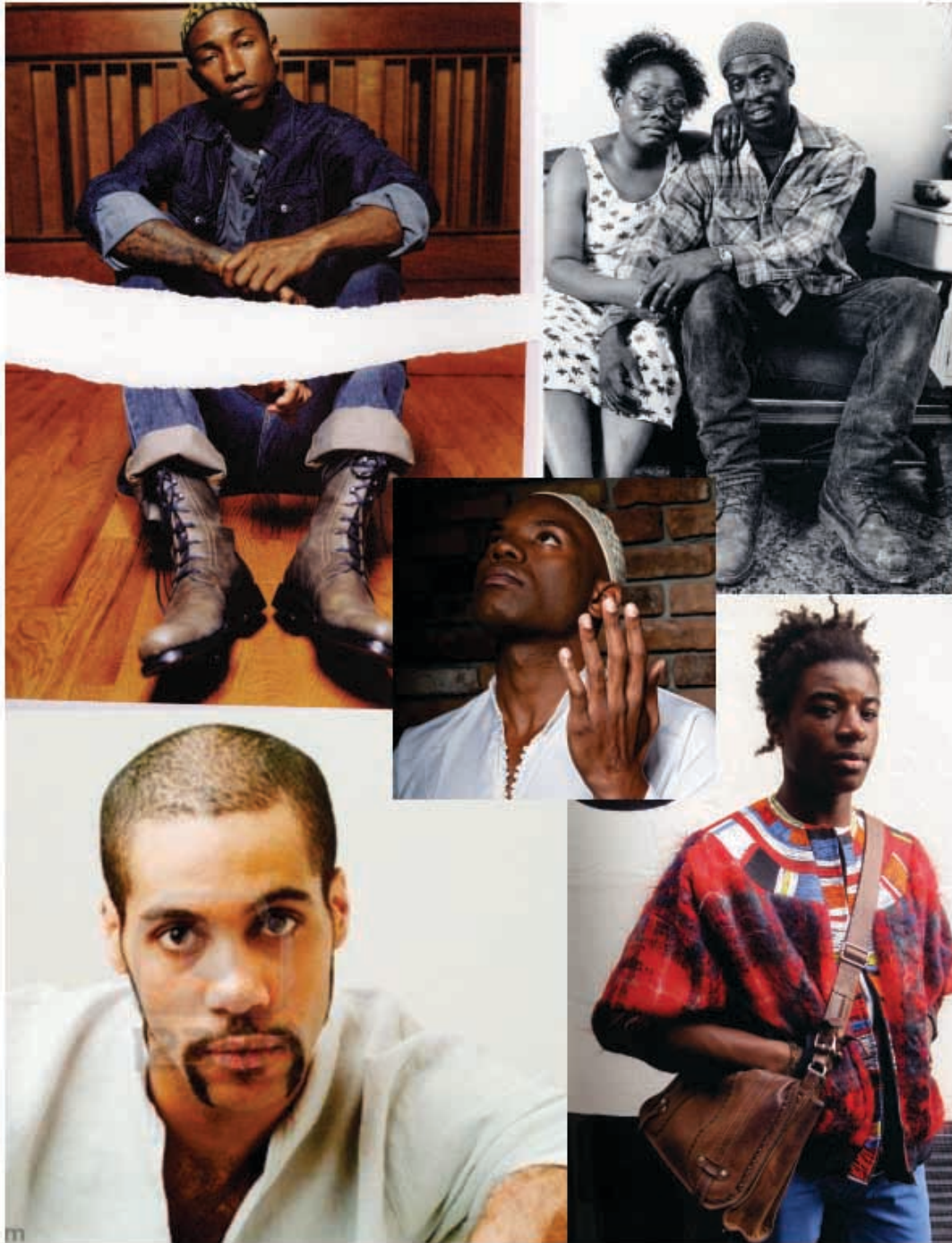
Maureen Research Plate

APPENDIX A: RESEARCH IMAGES



Joanne Research Plate

APPENDIX A: RESEARCH IMAGES



Tom Collins Research Plate

APPENDIX A: RESEARCH IMAGES



Ensemble Research Plate

APPENDIX A: RESEARCH IMAGES



Ensemble Research Plate

APPENDIX A: RESEARCH IMAGES



Ensemble Research Plate

APPENDIX A: RESEARCH IMAGES



Homeless Research Plate

APPENDIX A: RESEARCH IMAGES



Homeless Research Plate

APPENDIX A: RENDERINGS



APPENDIX A: RENDERINGS

RENT



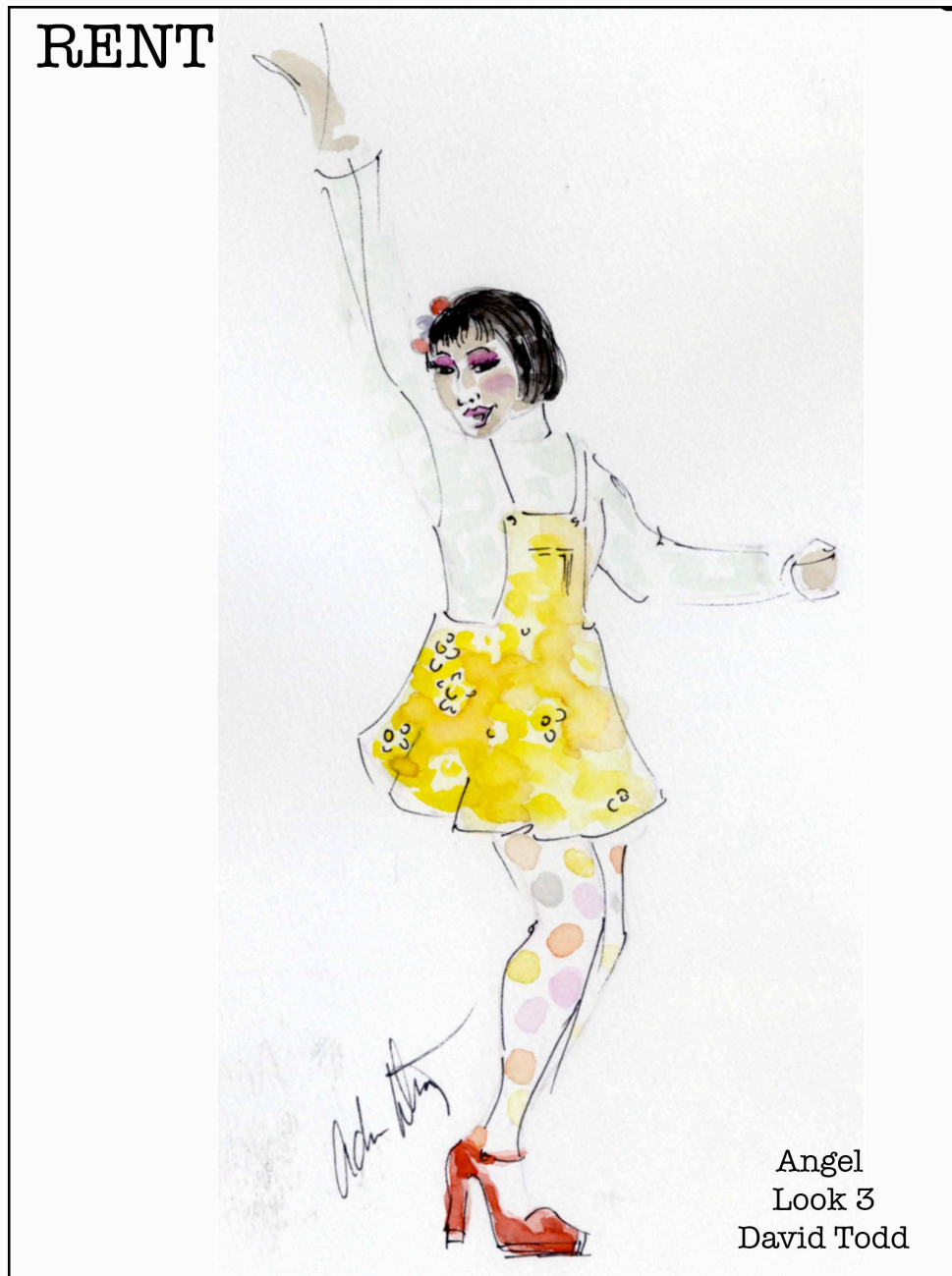
Angel
Look 1
David Todd

RENT



Angel
Look 2
David Todd

APPENDIX A: RENDERINGS



APPENDIX A: RENDERINGS



APPENDIX A: RENDERINGS

RENT



Angel
Look 5
David Todd

APPENDIX A: RENDERINGS



RENT



Rodger
Look 2
Jonathan Helwig



RENT



Mimi
Look 2
Erica Philpot

APPENDIX A: RENDERINGS

RENT



Mimi
Look 3
Erica Philpot

RENT



Mimi
Look 4
Erica Philpot

RENT



Maureen
Look 1
Kathryn Pace

APPENDEX A: RENDERINGS

RENT



Maureen
Look 2
Kathryn Pace

APPENDIX A: RENDERINGS

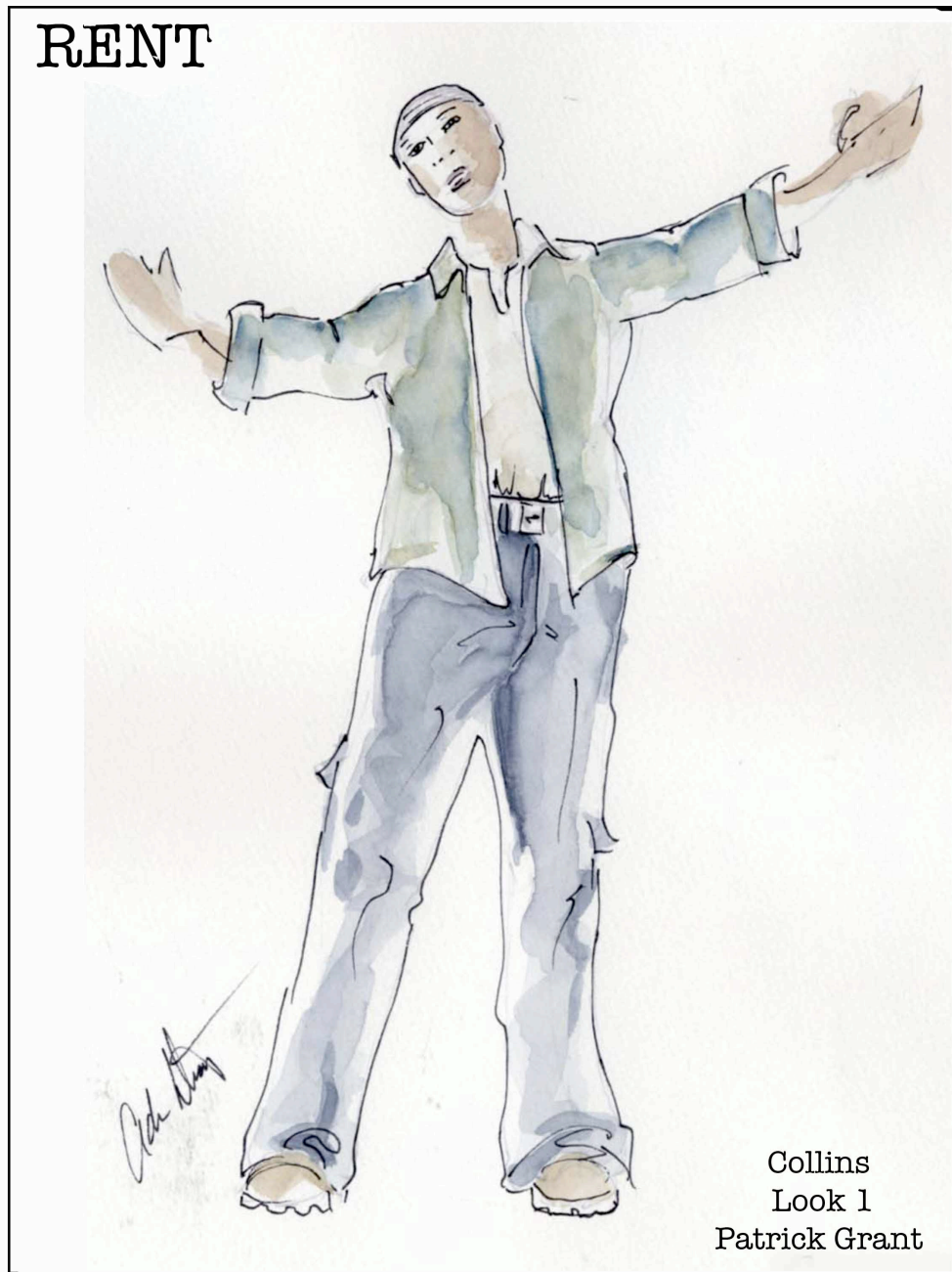


APPENDIX A: RENDERINGS





APPENDIX A: RENDERINGS



RENT



Collins
Look 2
Patrick Grant

APPENDIX A: RENDERINGS

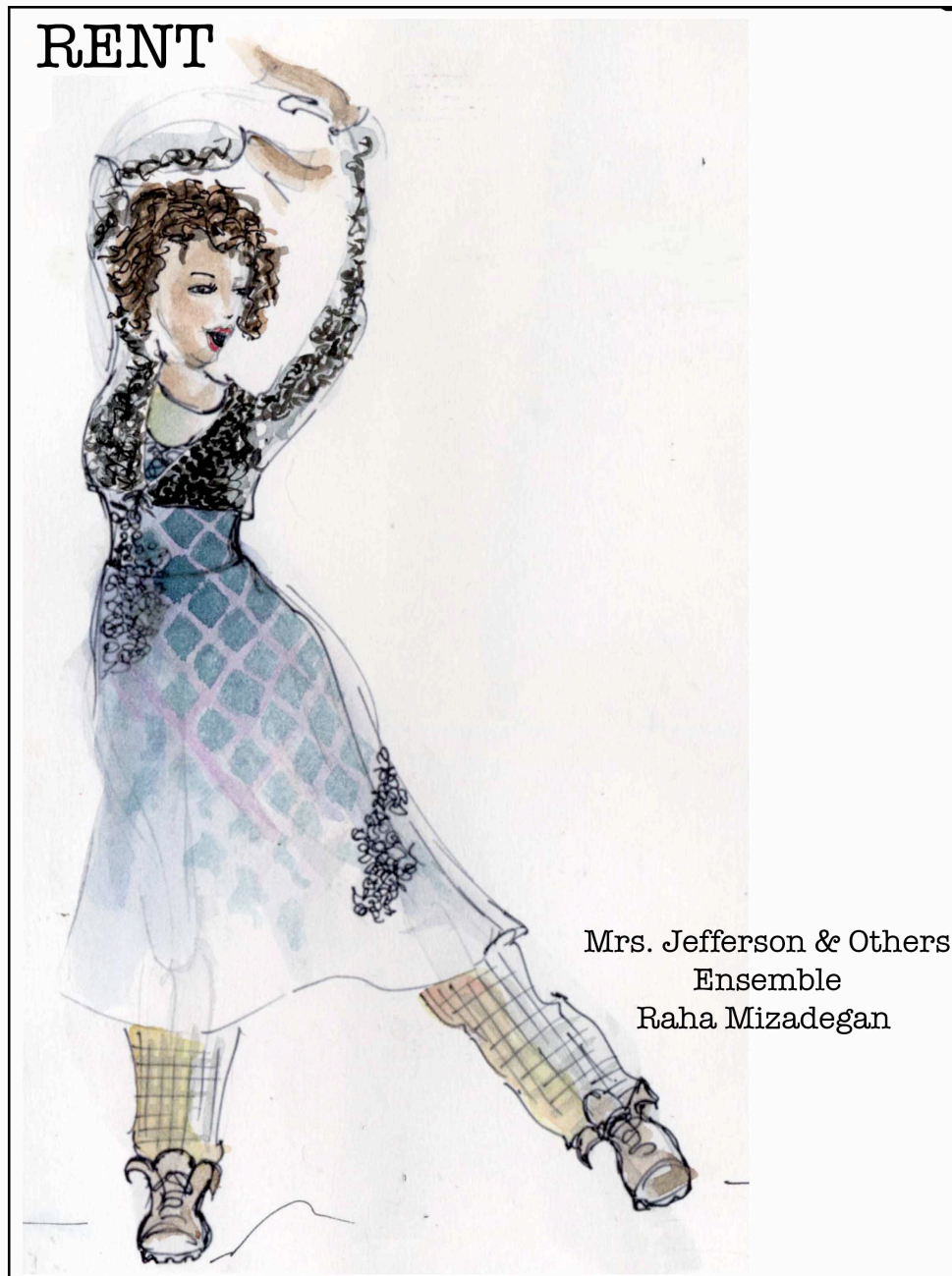


RENT



BENNY
Look 2
Patrick Prebula





RENT



Marks Mom & Others
Ensemble
Shayna Blass



RENT



Paul & Others
Ensemble
Tyler Johnson

RENT



Gordon & Others
Ensemble
Shane O'Loughlin

RENT



Mr. Jefferson & Others
Ensemble
Brenden Edward Kennedy





RENT



Marks Mom & Others
Homeless
Shayna Blass

RENT



Pual & Others
Homeless
Tyler Johnson

RENT



Mr. Jefferson & Others
Homeless
Brenden Edward Kennedy





RENT



Mr. Jefferson & Others
Mr. Jefferson
Brenden Edward Kennedy

RENT



Mark's Mom & Others
Mark's Mom
Shayna Blass

APPENDIX B: FITTING PHOTO'S



David Todd- Angel Chrstmass Mock up fitting and Fabric swatch

APPENDIX B: FITTING PHOTO'S



David Todd- Angel look #3 Mock up fitting and swatch of Table cloth

APPENDIX B: FITTING PHOTO'S



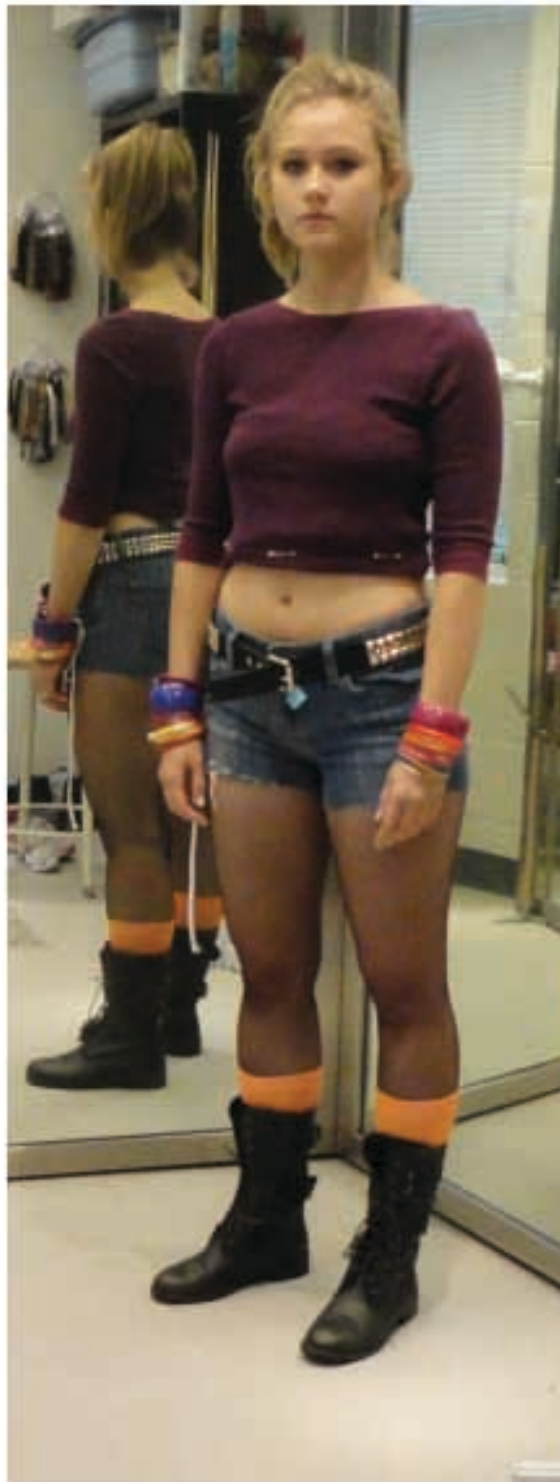
David Todd-Angel Pussy Galore mock up fitting

APPENDIX B: FITTING PHOTO'S



David Todd - Angel Final look and first look

APPENDIX B: FITTING PHOTO'S



Laura Gephord- Alexi Darling and others

APPENDIX B: FITTING PHOTO'S



Matt Hill- Mark We went through many options to find something that translated the best.

APPENDIX B: FITTING PHOTO'S



Erica Philpot- Mimi



APPENDIX B: FITTING PHOTO'S



Brendan Edward Kennedy- Mr. Jefferson and Others

APPENDIX B: FITTING PHOTO'S



Jonathan Helwig- Roger



APPENDIX B: FITTING PHOTO'S



Jenay McNeil- Joanne



APPENDIX B: FITTING PHOTO'S



Raha Mirzadegan- Mrs. Jefferson and Others

APPENDIX B: FITTING PHOTO'S



Javier del Pilar- Steve and Others

APPENDIX B: FITTING PHOTO'S



Patrick Grant- Collins

APPENDIX B: FITTING PHOTO'S



Sarah Lomke- Ensemble



APPENDIX B: FITTING PHOTO'S



Shane O'Loughlin- The Man and Others



APPENDIX B: DISTRESSING REFERENCE MATERIAL



Shane O' Laughlin
Mr. Jefferson and others

Black coat needs to be softened and distressed



Shoes need to feel worn in they not so clean

Jeans need to be broken down not heavy distress but the start of wear. fray the edges of the back of the pants



Tyler Johnson
Paul and others

Dye grey shirt purple

Distress the Pants (Fade them and maybe a little bleach)



Johnathan Hellwig
Roger

Shirt Dye over dye with a little lime green to liven it a bit.

Shoes Wear in a bit

APPENDIX B: DISTRESSING REFERENCE MATERIAL



Erica Philpot
Mimi

White tank top Stretch out (a lot) Break down fibers
tea dip

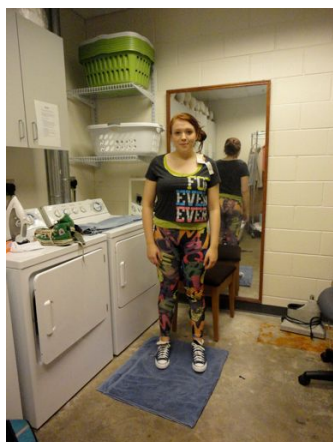
Skirt Break down fibers



David Todd

Angel

ecru dip pants and wife beater lightly



Rachel Barlem

Distress Shoes and laces
Stretch out green undershirt



APPENDIX B: DISTRESSING REFERENCE MATERIAL



Sarah Lomke, Billy G, Javier

NYPD POLICE - stenciled In black on back and front similar placement to Research photo



Billy

Swing
Homeless Distress Coat and mittins



Brenden Edward Kenedy

Hat (can we make more of a neon pink)

Coat dust with more of a burnt orange to bring down the color.

distress vest and coat (dirt stains)

APPENDIX B: DISTRESSING REFERENCE MATERIAL



Laura Gephord

Homeless

Coat distress (hem make sure to distress)



Tyler Johnson

homeless

Break in coat distress heavily

hat Paint on hat to distress dirty

scarf dirty distress



Javier

Homeless

coat break in Spray down color Dirty dingy

APPENDIX B: DISTRESSING REFERENCE MATERIAL



Sarah Lomke

Homeless

Distress Coat (break in Dirt and wear)

Dis color Hat



Josh Chick
Bomber hat distress

jacket distress

Pants distress (dull down spots)



Raha

Homeless

Distress hem of coat heavily. Add dirt and grim to all scarfs hats and yellow Jacket

APPENDIX B: DISTRESSING REFERENCE MATERIAL



Raha

Ensemble

Dye pants yellow green

Break down Fibers of shirt

Break in shoes Distress



Rachel Barlem

Homeless

Pants Dye (watercolor washy)

Dye Sweater

Distress hat and coat Wear down break down and dirt.

APPENDIX C: COSTUME PLOT

Act 1								
Character	Mark	Roger	Benny	Collins	Angel	Mimi	Joanne	Maureen
Actor	Matthew Hill	Jonathan Helwig	Patrick Prebula	Patrick Grant	David Todd	Erica Philpot	Jenay McNeil	Kathryn Pace
Prologue	button up shirt sweater Jeans Converse Glasses Leather Bracelet	Henley gold black pants 2 necklaces rubber bands Motorcycle boots	Shoes Pleated Khakis turtleneck Scarf leather Jkt	Work boots Carpenter jean Shirt Button up Shirt Kufi Topi Canvas Coat	Jersey Shirt Jean jacket Jean sweat pants rebock shoes Beanie Hat	Black mesh shirt black tank short skirt fishnets tattered socks addidas heels Cheatah jacket	Brown Suit cream vest brown boots	Black leggings pink bustier black boots leather motorcylce jacket
Tune up A	Same	Same	Same	Same	Same	Same	Same	Same
Voicemail #1	Same	Same	Same	Same	Same	Same	Same	same
Tune up B	Same	Same	Same	looses coat	Same	same	Same	same
Rent	Same	Same	Same			SAme		
				Add sleeve	Same		Same	same
X-mas Bells #1		Same			Same			
You Okay Honey		Same		Remove coat/ gain sleeve				
					Same			
Tune up Rep	Add Coat Add scarf	Same						
Glory		Same						
Light my Candle		same				boots w fur Short jersey skirt fishnets tattered knee socks lace shirt tank top		
Voicemail #2		Same						Same
Today for you A	Same	Same	Same	Same	Wrapping paper coat Pattern tights platform heels Short overall Table cloth dress lace turtleneck dress			
You'll See	Same	Same	Same	Same	Same			
Tango Maureen	Same	Same					Same	

APPENDIX C: COSTUME PLOT

Support Group	Same	Same		Same	Same			
Out tonight	Same	Same		Same	Same	Robe/ kimono Fishnet shirt leather halter Fringed wrap wet look pants knee high boots chopstick		
Another Day	Same	Same		Same	Same	Same		
Will I	Same	Same	Same	Same	Same	Same	Same	
On the street	Same			Same	Same			
Santa Fe	Same			Same	Same			
I'll cover You				Same	Same			
We're Okay							Same	
Christmas Bells	Same	Add Leather jkt	Add sunglasses	Add leather trench	same	add sunglasses cheetah jacket	Same	
Over the Moon	Same	same	same	same	same	remove sungla	Same	Tube socks gloves motorcycle helmet 2 studded belt sunglasses Remove leather jacket
La Vie Boheme	Remove coat	remove jkt	Remove leather coat Add Blue Blazer	Remove coat	remove coat	remove coat	same	Remove bell

APPENDIX C: COSTUME PLOT

Act 2								
Character	Mark	Roger	Benny	Collins	Angel	Mimi	Joanne	Maureen
Actor	Matthew Hill	Jonathan Helwig	Patrick Prebula	Patrick Grant	David Todd	Erica Philpot	Jenay McNeil	Kathryn Pace
Seasons of Love	Add coat add scarf	Add Leather coats	Remove blue blazer Add Leather jacket	Carpenter pants Henley T-shirt kufi Topi trench coat	Jersey Shirt Puff coat Jean sweat pants rebock shoes Beanie Hat	Cheetah coat dress thigh high boots fishnets tight	Long trench grey bustier black plazzo pants polka dot jacket black loafer heels	Black pants knee boots black bustier leather jacket
Happy New year	same	same		remove trench Tux jacket sunglasses	yellow tights picture dress white gogo boots purse	same	same	Remove coat Add cat ears
Voice Mail #3	same	same		same	same	same	same	same
Happy New year b	same	same	same	same	same	same	Same	Same
Take me or leave me	Same						Remove coat	Remove cat ears Add blue shirt
Seasons of Love B	Same	SAme	Same	SAme	Same	Same	Same	Same
With out you	same	Remove Henley Remove leather coat		same	Wife Beater PJ pants loose sweater	Same	Same	same
Voicemail 4	Same	Add Henely	Same	Same	same	Same	SAme	Same
Contact	Same	Same	Same	Carpenter pants Henley T-shirt kufi Topi	same	Same	Add white jacket	Same
I'll cover you	Same	Same	Same	Add trench		Same	Same	Same
Halloween	Same							
Good bye love	Same	Same	Same	Same		Same	Same	Same
What you own	Same	Same	Same					
Voice Mail #5								
Finale	Remove coat & scarf	Remove henley Add Dress Shirt Add vest						
Your Eyes	Same	Same		same		Jersey dress Distressed Fishnets Knit sweater Black fur boots distressed socks	Add paisley coat	Add leather coat
Finale B	Same	Same	Same	same	Jersey Shirt Jean jacket Jean sweat pants rebock shoes Beanie Hat	Same	Same	Same

APPENDIX C: COSTUME PLOT

Act 1										
Character	Mrs. Jefferson and others	Alexi and others	Marks mom and others	Paul and others	Gordon and others	steve and others	Mr. Jefferson and others	Swing 1	Swing 2	
Actor	Raha Mirzadegan	Laura Gepford	Rachel Barlam	Tyler Johnson	Shane O' Loughlin	Javier De Pillar	brendan Edward Kennedy	Sarah Lomke	Billy Geltzer	
Prologue	Base- Plaid Pants jumper Stripe Shirt lace tie bollero hiking boots Necklaces	Base- Fishnets tube socks military boots pink crop top jean shorts belt necklaces bracelets Swim/ bra	Base Flanel shirt Patched pants military boots white henely green white stripe	Base- maroon pants long sleeve cut off shirt short sleeve cut off shirt bandana adidas jean vest	Base yankees cap Jersey Shirt jeans Hoodie Coat	Base Hangover shirt black zip hoodie Bomber hat baseball hat mauve pants Galoshes blue distressed coat	Base Jersey shirt vest corduroy pants converse	Base- Number and letter leggings tank tops jersey shirt	Base Short black jeans jersey shirt cordroy shirt	
Tune up A	Same	Same	Same	Same	Same	Same	Same	Same	Same	
Voicemail #1	Same	Same	Add sweat Glasses	Same	Same	Same	Same	Same	Same	
Tune up B	Same	Same	Same	Same/ gangster- add homeless coat	Same/ gangster- put up hood	Same	Same	Same	Same	
Rent	Same	Same	base	Base- maroon pants long sleeve cut off shirt short sleeve cut off shirt bandana adidas jean vest	Same	Same	Same	Same	same	
X-mas Bells #1							Add Chunky scarf Neon hat gloves puffy coat puffy vest			
You Okay Honey										
Tune up Rep Glory										
Light my Candle										
Voicemail #2	Add Add scarf long coat Wig						Base plus suit Jacket fedora scarf			
Today for you A										
You'll See										
Tango Maureen										
Support Group	Base	Base	base	Add Wig Add X-mas Sweater	remove coa	remove blue coat and fur cap				
Out tonight	same	same	Same	Same	Same	Same				

APPENDIX C: COSTUME PLOT

Another Day	Same	same	Same	Same	Same	Same				
Will I	Same	same	Same	Same	Same	Same	Base			
On the street	Add knit caps 3 scarfs trench coat wind breaker gloves	Add trench Add scarf Add hat Add gloves	Yellow pants yellow coats cop hat	Homeless Add Green cord coat Orange knit cap Teal scarf	Homeless- zip up coat	base	Homeless Add-Chunky scarf Neon hat gloves puffy coat puffy vest	Yellow pants yellow coats cop hat	Yellow pants yellow coats cop hat	
Santa Fe	Same	Same	Homeless Add green With sweat knit cap Purple scarf brown gloves	Same	Same	Same	Same	Homeless Maroon Jacket yellow hat Scarf	Homeless Two knit blue coat orange scarf	
I'll cover You										
We're Okay										
Christmas Bells	same/ Base	Same/ base	same/ base	same / base / Add Yellow Pants Coat cop hat	Same/ put up hood	same	same/ base with coat	Add- Yellow yellow coat cop hat	Add-Yellow yellow coat cop hat	
Over the Moon	Base	Base	Base	Base	Base	Base	Base	Base	Base	
La Vie Boheme	Same	same	Same	Add Apron	The Man	Remove windbreaker	Ensemble	Add Apron	Mr. Grey- suit tie shirt black shoes glasses	

APPENDIX C: COSTUME PLOT

Act 2										
Character	Mrs. Jefferson and others	Lexi and others	Marks mom and others	Paul and others	Gordon and others	steve and others	Mr. Jefferson and others	Swing 1	Swing 2	
Actor	Raha Mirzadegan	Laura Gepford	Rachel Barlam	Tyler Johnson	Shane O' Loughlin	Javier Del Pilar	brendan Edward Kennedy	Sarah Lomke	Billy Geltzer	
Seasons of Love	Base plus Boyfriend coat	Base plus fur vest	Base plus leather coat with fur	Base	Base	Base	Base plus coat	Base plus coat	Base plus coat	
Happy New year										
Voice Mail #3	Add beanie Add Jacket	Add Glasses Add suit jacket	Add Sweater				Add Jacke Add scarf Fedora			
Happy New year b					put up hoodie					
Take me or leave me										
Seasons of Love B	base	base	base	base	base	Base	Base	Base	Base	
With out you										
Voicemail 4		Add Glasses Add suit jacket								
Contact	Long Sleeve b Overalls	Bikini top White cut up Jeans with p fishnets orange socks boots	Pink dress White Lace shirt	white cut off shirt neon pan	Gray Shorts A shirt yellow Vest	open w mauve boots	White Shirt White pan rainbow suspende	Pink bra Alphabet leggings little skirt	White sh Neon Sh black pa doc Mart	
I'll cover you	Same	Add pink Shir	Add Jacket	Add pants Add fur v	Remove Sho Remove vest Add Jeans Add sweater Add Vest	Remov Add Sv Hangov	Add base Leather V	Add Base	Add hen Add T-sh Add hen	
Halloween										
Good bye love										
What you own										
Voice Mail #5	Add Beanies	Add glasses Vest	Add Sweater							
Finale	Add 2 knit caps 3 scarfs trench coat wind breaker gloves	Add trench Add scarf Add hat add gloves	Add Yoga pants Add sweater hood Add Jacket Add knit cap	Add brown coat knit cap large scarf gloves	zip up coat	Add Galosh blue distress coat Orange plaid bomber hat	Add Chunky scarf Neon hat gloves puffy coat puffy vest	Homeles Maroon Jacket yellow hat Scarf	Homeles Two knit caps blue coat orange scarf	
Your Eyes										
Finale B	Base	Base	Base	Base	Base	Base	Base	Base	Base	

APPENDIX C: COSTUME PIECE LIST

Actor	Character		Item	notes
Erica Philpot	Mimi		Mesh body suit	Bra attached
			grey watch	
		Prologue	Skirt	
			black tank	
		Look 1	Boots with heels	Adidas stripes
			Short jersey skirt	Purple
			Tank top	White
			Lace shirt	Black
			Tattered over the knee socks	
			Fishnet tights	
		Christmas Bells	Cheetah Bolero	
			sunglasses	
		Look 2	Robe / kimono	
			Fishnet shirt	
			leather halter	
			Skirt	Black Sequin
			leggings	Pink Snake Skin
			Black knee high boots	
			Chopstick for hair	
		Christmas Bells	Sun glasses	
			Cheetah Jacket	
		Look 3	Cheetah print Coat	
			Dress	Pink
			thigh high boots	Black suede and leather
			distressed Fishnet tights	
		Look4	Large oversized sweater	Maroon Stripes
			Jersey dress	
Jenay McNeil	Joanne		Mic Pack	
			Bra	Black Strapless
			Black socks	

APPENDIX C: COSTUME PIECE LIST

Actor	Character		Item	notes
		Look 1	Vest	Cream gold stripe
			Suit Jacket	Tan dbl. breast
			Pants	Tan tapered suit
			dress boots	brown
		Look 2	Bustier	Grey with attached pantie
			Pants	Black Palazzo
			Boots	Combat boots
			Jacket	Black white Polka dot
			Jacket	White short jacket
			Dress shoes	Black oxfords
			Winter coat	Red cream Paisley
Kathryn Pace	Maureen		Mesh leo	Mic Pack
			Slimmer	
			Granny boots	
			Black short socks	
		Prologue	Black leggings	
		Look 1	Tube top	Pink with shorts attached
			2 studded belts	connected
			Tube socks gloves	white with green stripes
			Leather Jacket	black
			Motorcycle helmet	
			Sun glasses	Black with red stripe
		Look 2	bustier	Black
			Pants	black poly with belt
			Cat ear head band	
		Look 3	Blue satin blouse	
Raha Mirzadegan	Mrs. Jefferson and others		Mic belt	
			Socks	
			Combat boots	
		Base	Plaid pants	yellow

APPENDIX C: COSTUME PIECE LIST

Actor	Character		Item	notes
			Jumper	Blue plaid
			Lace tie bolero	Black
			Shirt	Red white stripe
			Chocker	Black
		Seasons of Love	Winter coat	Blue boyfriend coat
		Mrs. Jefferson	Long coat	Raspberry
			Scarf	Maroon Patterned
		Mimi's Mom	Black knit cap	
			Earrings	Clip on hoops
		Homeless	2 knit caps	Attached Yellow and cream
			3 scarfs	
			trench coat	Green scarf attached
			wind breaker	Yellow
			gloves	
		Contact	sports bra	White
			Overalls	Bleached with slashes
Laura Gepford	Alexi and others		Fishnet tights	Circle patterned
			Mic Pack	
			Tube socks	Orange
			Military boots	
		Base	Pink crop top	
			Jean shorts	With patches
			Studded belt	
			necklaces	
			bracelets	Attached
		Alexi Darling	Blazer	
			Glasses	
		Homeless	Pink trench	
			Felt hat	Orange
			Scarf	Blue

APPENDIX C: COSTUME PIECE LIST

Actor	Character		Item	notes
			Gloves	Green
		Roger's Mom	Braided vest	
			Glasses	
		Contact	bikini top	
			Sliced up tank top	
			jean shorts	
Rachel Barlem	Marks mom and others		Mic Pack	
			Black socks	
			boots	black combat boots
		Base	Plaid shirt	
			Patched jeans	
			henley	white
			short ribbed shirt	green white stripe
			Necklaces	
			Bracelets	
		Season's of Love	Coat	Lamb's wool
		Homeless	jacket	green with pink sweater
			Hat	green with pink pom pom
			layered yoga pants	Gray
			Scarf	Purple fuzzy
		Cop	Yellow Raincoat	
			Yellow Rain pants	
			Cop Hat	
		Mrs. Cohen	Christmas Sweater	
			Glasses	
		Contact	Dress	Pink halter
			shirt	White lace
Sarah Lokem	Swing 1		Mic Pack	
			Socks	White peds

APPENDIX C: COSTUME PIECE LIST

Actor	Character		Item	notes
			Shoes	Green Converse Shoes
		Base	Leggings	Alphabet Print
			Tank top	
			Grey shirt	Forever American Eagle
		Seasons of Love	Coat	Purple with fur around th
		Homeless	Maroon Coat	
			hat	yellow beanie
			Gloves	
			Scarf	Red pink stripe
		Contact	Skirt	Grey denim
			bra	Pink lace

Actor	Character	Look	Piece	Description
Mathew Hill	Mark	Base	White Socks	
			Mic Pack	
			Belt	Brown
			Shoes	White Converse
			Plaid shirt	Orange plaid
			Scarf	Red black white plaid
			Stripe sweater	black and white
			Coat	black and green plaid
			Glasses	square
			Leather Bracelet	1 brown 1 black
			Belt	Brown checkered
Jonathan Helwig	Roger	Base	Black Socks	
			Mic Pack	
			Motorcycle boots	black
			A-shirt	Gray
			Belt	Black
			pants	Gold window pane
			Henley	Green
			Leather Motorcycle Jacket	Black
			Rubber bands	
			2 necklaces	

APPENDIX C: COSTUME PIECE LIST

Actor	Character	Look	Piece	Description
		Look #2	White dress shirt	
			Vest	Black white stripe
Patrick Prebula	Benny	Base Look	WhiteSocks	
			Mic Pack	
			Spanx	
			Red tennis shoes	
			Pleated Khaki's	
			Green turtleneck	
			Leather Jacket	white stripe cuffs
			Sun glasses	with green stripe
		Look #2	Blue Blazer	black corduroy
Patrick Grant	Collins		White Socks	
			Mic Pack	
			Work boots	
		Look 1	Carpenter jeans	
			Button up shirt	Blue micro suede
			Kufi Topi	
			Canvas Windbreaker	
			Henley	Grey
		Look 2	Leather Trench coat	
			Shirt	Grey henley with black P
		Look 3 - james B	Tux Coat	
			sun glasses	
David Todd	Angel		White Briefs	
			Mic pack	
		Look 1	Jersey Shirt	With eagle feathers
			Jean jacket	
			Jean sweat pants	
			Shoes	White Adidas
			Beanie Hat	green
			Scarf	With stripe
			White socks	
		Look 2	Wrapping paper coa	holiday print fabric

APPENDIX C: COSTUME PIECE LIST

Actor	Character	Look	Piece	Description
			Tights	White
			Tights	Bingo ball patterned
			Bust pads	
			heels	Red platforms
		Look 3	Short overall dress	Table cloth
			Lace mock turtleneck	
		Look 4	Picture dress	Polyester
			White slip	
			Orange tights	
			Dance briefs	White
			White gogo boots	
			Purse	
		Look 5	White wife beater	
			White Jersey Pants	
			White jersey cardigan	
Tyler Johnson	Paul and others		Mic Pack	
			White Socks	
			Shoes	High top sneakers with g
		Base	long sleeve cut off sh	Purple
			short sleeve cut off s	teal
			Fur Vest	Lime green fur
			Maroon Pants	
		Paul	Christmas sweater	with green turtleneck att
			Wig	
		Waiter	Apron	White Apron
		Homeless	Coat	forest green cord
			knit cap	orange
			large scarf	teal
		Contact	White cut off shirt	
			bike shorts	green neon
Shane O'Laugh	Gordon and others		Mic Pack	
			Socks	

APPENDIX C: COSTUME PIECE LIST

Actor	Character	Look	Piece	Description
			Grey shoes	
		Base	long sleeve shirt	with purple and grey stri
			Jeans	
			Vest with hood	purple plaid with grey ho
			Belt	Colts beer
			hat	Yankees baseball hat
			Winter coat	Black
		Contact	white A shirt	
			grey shorts	
			yellow vest	
Javier Del Pilar	steve and others		Mic Pack	
			Socks	
		Base	Black hoodie	
			shirt	Yellow hangover
			pants	Mauve Top shop
			Baseball cap	
		only in act 2	Black combat boots	
		Seasons of Love	coat	Brown canvas
		Squigge	galoshes	
			Blue winter coat	
			bomber hat	orange plaid
			Scarf	red
		Contact	pleather pants	
			mesh shirt	
Brendan Edwar	Mr. Jefferson and others		Mic Pack	
			Socks	
			Converse	Green High tops
		Base	brown corduroy pants	
			Vest	Black leather
			Jersey Shirt	Mauve with Beatles
		Seasons of Love	winter coat	Blue with cord collar
		Mr. Jefferson	Suit jacket	Brown tweed

APPENDIX C: COSTUME PIECE LIST

Actor	Character	Look	Piece	Description
			Fedora	Brown
			Scarf	Brown orange grey plaid
			Chunky scarf	Blue green white stripe
			Neon hat	Orange
			gloves	Multi color
			puffy coat	orange
			puffy vest	blue
		Contact	muscle shirt	white
			neon suspenders	
			White jeans	
		Priest	shirt	black no collar
			collar	white priest collar and st
			black jeans	
Billy Geltzer	Swing 2		Mic Pack	
			Socks	
		Base	jeans	Black
			Henley	blue with grey stripe shir
			plaid shirt	green cream
			Doc Martins	Black
		Cop	Yellow rain coat	
			Rain pants	
			Cop Hat	
		Homeless	Coat	Blue with plaid cuffs
			scarf	orange
			hat	yellow / and maroon hat
			Gloves	grey with red design
		Contact	White wash jeans	
			neon A shirt	
			White jean jacket	

APPENDIX D: PRODUCTION PHOTOGRAPHS



APPENDIX D: PRODUCTION PHOTOGRAPHS



APPENDIX D: PRODUCTION PHOTOGRAPHS



APPENDIX D: PRODUCTION PHOTOGRAPHS



APPENDIX D: PRODUCTION PHOTOGRAPHS



APPENDIX D: PRODUCTION PHOTOGRAPHS



APPENDIX D: PRODUCTION PHOTOGRAPHS



APPENDIX D: PRODUCTION PHOTOGRAPHS



APPENDIX D: PRODUCTION PHOTOGRAPHS



APPENDIX D: PRODUCTION PHOTOGRAPHS



APPENDIX D: PRODUCTION PHOTOGRAPHS



APPENDIX D: PRODUCTION PHOTOGRAPHS



APPENDIX D: PRODUCTION PHOTOGRAPHS



APPENDIX D: PRODUCTION PHOTOGRAPHS



BIBLIOGRAPHY

- Banier, François-Marie. *Past, Present*. New York, NY: Distributed by Hearst, 1997. Print.
- Bill Cunningham New York*. Dir. Richard Press. Perf. Bill Cunningham, Tom Wolf, and Anna Wintour. First Thought Films/ Filmwelike, 2010. DVD.
- Braschler, Mathias. *Madison Avenue*. Zurich, Switzerland: A. Züst Verlag, 1999. Print.
- Brenner, Jackie. *Friday Night Grind: Bourbon Street, New Orleans*. [New Orleans, La.?]: Shine Media Group/Jackie Brenner, 2006. Print.
- Cohen, Esther. *Unseen America: Photos and Stories by Workers*. New York: Regan, 2006. Print.
- Corbis Images – Premium Quality Stock Photography and Illustrations*. Web. 11 Jan. 2012. <<http://www.corbisimages.com/>>.
- Davatz, Barbara. *Barbara Davatz: As Time Goes by : Portraits 1982, 1988, 1997*. Zürich: Ed. Patrick Frey, 1999. Print.
- Doster, Michael. *Michael Doster: 80/90*. Bologna: Damiani, 2009. Print.
- Google Images*. Web. 11 Jan. 2012. <<http://images.google.com/>>.
- Heine, Olaf. *Olaf Heine, Leaving the Comfort Zone: [photographs 1991 - 2008]*. Ostfildern: Hatje Cantz, 2008. Print.
- Hewitt, Marcus, and Robyn Selman. *Conceptual People Photography: Portraiture, Life Style, Fashion Beauty, Illustration*. New York: New York Gold, 1992. Print.
- Itkoff, Michael, Bill Kouwenhoven, and Aaron Schuman. *Street Portraits*. Milano: Charta, 2008. Print.
- Kismaric, Susan. *Fashioning Fiction in Photography since 1990*. New York: Museum of Modern Art, 2004. Print.
- Kwon, Sue. *Street Level: New York Photographs ; 1987 - 2007*. New York: Testify, 2009. Print.
- Larocca, Amy, and Jake Chessum. *New York Look Book: A Gallery of Street Fashion*. New York: Melcher Media, 2007. Print.
- Leigh-Bennett, E. P. *A London Club*. [London]: Junior Constitutional Club, 1932. Print.
- Rodic, Yvan. *Facehunter*. New York: Prestel, 2010. Print.
- Schuman, Scott. *The Sartorialist*. London: Penguin, 2009. Print.
- Seliger, Mark. *In My Stairwell*. New York: Rizzoli, 2005. Print.
- Stock Photography, Royalty-Free Photos, Video Footage & Music | Getty Images*. Web. 11 Jan. 2012. <<http://www.gettyimages.com/>>.
- Street View: The New Nylon Book of Global Style*. New York, NY: Universe Pub., 2010. Print.
- Trevillian, Nicole. *London Club*. Milano: Charta, 2009. Print.
- Watts, Ben. *Big up*. New York, NY: Princeton Architectural, 2003. Print.
- Watts, Ben. *Lickshot: A Photo Scrapbook*. New York: Princeton Architectural, 2009. Print.

BIBLIOGRAPHY

Welcome to Flickr - Photo Sharing. Web. 11 Jan. 2012. <<http://www.flickr.com/>>.