

ABSTRACT

Title of Thesis: LIGHTING DESIGN OF THE WINTER'S TALE
 THE INA AND JACK KAY THEATRE
 CLARICE SMITH PERFORMING ARTS CENTER
 UNIVERSITY OF MARYLAND, COLLEGE PARK

Brian C. Engel, Master of Fine Arts, 2009

Thesis Directed by: Assistant Professor, Harold F. Burgess II, Department of Theatre

The purpose of this Thesis is to provide research, supporting paperwork and production photographs that represent the lighting design for *The Winter's Tale* by William Shakespeare at the University of Maryland, Department of Theatre. This thesis contains the following documentation: Research Images which contribute to the intellectual design of the production and visually communicate to the director the ideas of texture, color, quality, and angle of light; a preliminary, rough, and final wish list used in the design development process; the scenic ground plan and section; all three plates of the light plot communicating to the electricians where to hang each individual lighting unit; the channel hookup and instrument schedule paperwork which support the light plot; the cue track used to develop and record the cue structure; and the magic sheet used to efficiently access the design tools. Archival production photographs are included to visually document the completed final design.

LIGHTING DESIGN OF THE WINTER'S TALE
THE INA AND JACK KAY THEATRE
CLARICE SMITH PERFORMING ARTS CENTER, UNIVERSITY OF MARYLAND

By

Brian Christopher Engel

Thesis submitted to the Faculty of the Graduate School of the
University of Maryland, College Park, in partial fulfillment
of the requirements for the degree of
Master of Fine Arts
2009

Advisory Committee:

Assistant Professor Harold F. Burgess II, Chair

Professor and Department Chair, Daniel MacLean Wagner

Assistant Professor Leigh Wilson Smiley

Assistant Professor Misha Kachman

TABLE OF CONTENTS

APPENDIX A: PRE PRODUCTION MATERIALS

DESIGN CONCEPT STATEMENT	1
RESEARCH IMAGES	3

APPENDIX B: PLATES

SCENIC GROUND PLAN	10
SCENIC SECTION	11
LIGHT PLOT	12

APPENDIX C: SUPPORTING PAPERWORK

PRELIMINARY WISH LIST	15
ROUGH WISH LIST	18
FINAL WISH LIST	29
CHANNEL HOOKUP	40
INSTRUMENT SCHEDULE	53
CUE TRACK	65
MAGIC SHEET	77

APPENDIX D: PRODUCTION PHOTOGRAPHS 78

BIBLIOGRAPHY 86

APPENDIX A: PRE PRODUCTION MATERIALS

Design Concept Statement for *The Winter's Tale*

The Winter's Tale by William Shakespeare is known as one of his problem plays. It is not easily categorized by plot structure like many of his comedies and tragedies. This created the opportunity to add an interesting conceptual approach to assist in the telling of the story. Leigh Smiley, the director of this production, offered the idea that the entire story would be told from the viewpoint of the young prince, Mamilius. This angle allowed the designers to find our own ways into the play.

I chose to approach the play in two different ways. First, I wanted to convey the descent into madness taken by Leontes, the Sicilian King. His stranglehold on his own version of the truth strips away all common sense and causes the death of his son and wife. I chose to represent this through the fragmentation of light. As Leontes becomes trapped deeper and deeper within his own mind, I slowly stripped away different sources of light. This culminated with the moment just prior to the trial of Hermione, when he is lit by only a single spotlight. After the Oracle has been denied and Leontes is brought out of his psychosis, light floods back into the room as he realizes his deadly mistake. This treatment of Leontes is motivated by my interpretation of how Mamilius views his father. When Mamilius sees his mother thrown in prison, he sees his father becoming isolated and distanced from the rest of the royal family.

Seeing the story from Mamilius' point of view also supports the second method I used to approach the play. During the end of Part I and through nearly all of Part II,

Mamilius is fabricating a story using components which he can only imagine. This gave me the opportunity to concentrate on sculpting the environment of Bohemia. Instead of following the emotional motivations which bound the story in Sicilia, I was able to use more natural motivation such as the passage of a single day in Bohemia. Though I chose to use more natural motivations, because the story is still a tale being told by Mamilius, I allowed for some extraordinary moments that shattered the realistic depiction. These moments specifically included the storm on the seashore, and several musical moments in and around the Bohemian sheep shearing festival.

The fantastical and magical moments in *The Winter's Tale* are accentuated by the conceptual idea that world of the play is viewed through the eyes of a young boy. This allowed me to explore the story from a non-realistic point of view. Capturing the emotional rawness of a young boy losing his mother, and the joy and mirth of a strange unknown land, provided a full spectrum of opportunities to visually support the imaginations of the prince.

RESEARCH IMAGES



THE WINTER'S TALE - LIGHTING RESEARCH
A TALE TOLD THROUGH MAMILIUS' EYES.



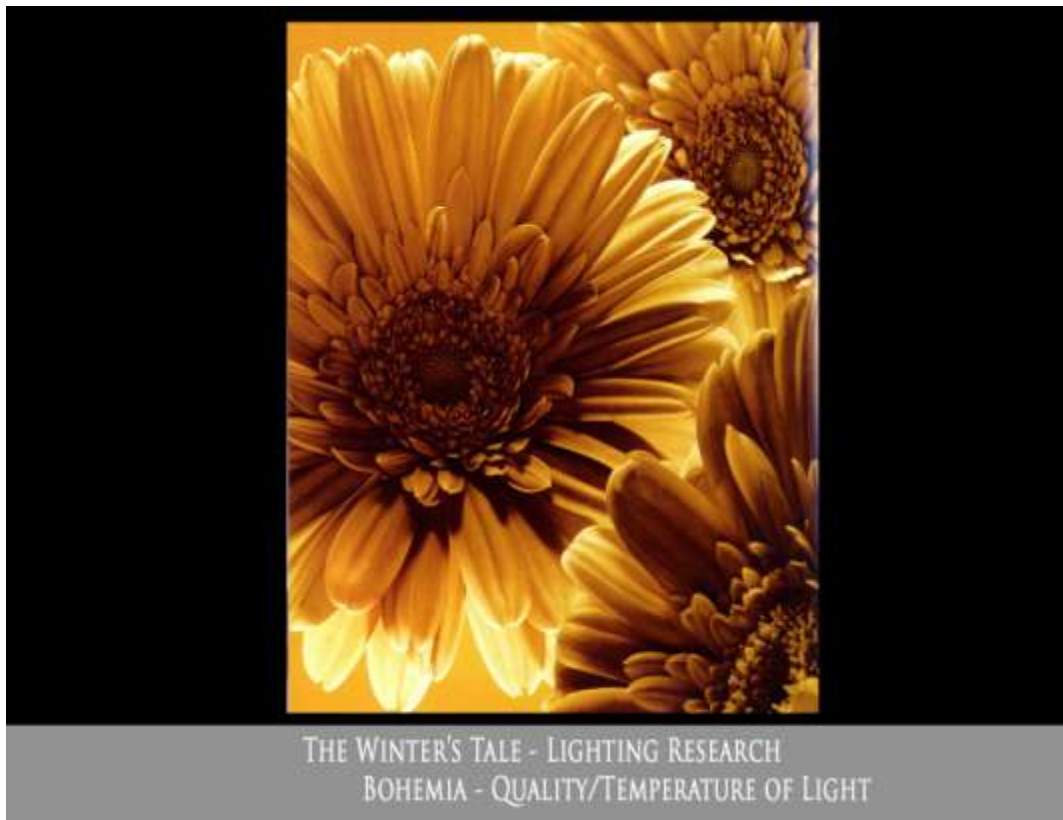
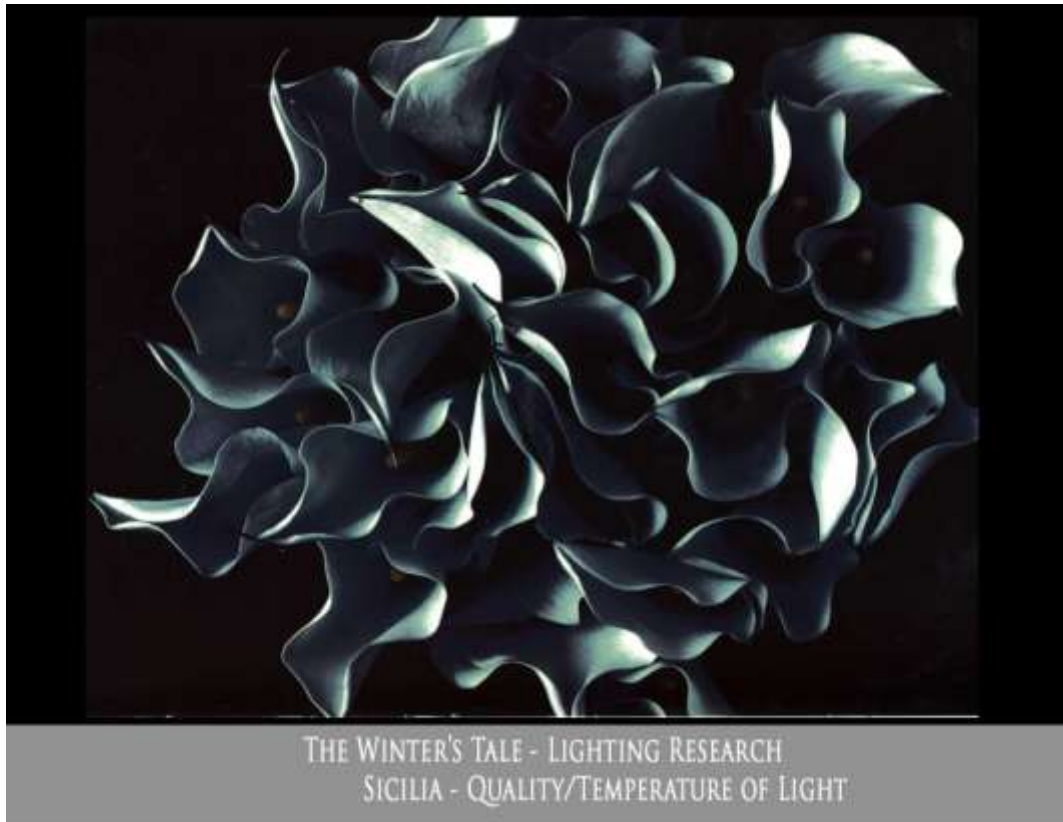
THE WINTER'S TALE - LIGHTING RESEARCH
SICILIA AS SEEN THROUGH THE EYES OF A FUTURE KING.



THE WINTER'S TALE - LIGHTING RESEARCH
DUALITY OF STORYTELLING - SICILIA/BOHEMIA



THE WINTER'S TALE - LIGHTING RESEARCH
CONCEPT ART - THE ABSTRACT STORYTELLER "TIME".





THE WINTER'S TALE - LIGHTING RESEARCH
SICILIA - LIGHTING TEXTURE



THE WINTER'S TALE - LIGHTING RESEARCH
SICILIA - LIGHTING TEXTURE



THE WINTER'S TALE - LIGHTING RESEARCH
BOHEMIA - ORGANIC TEXTURE INSPIRATION



THE WINTER'S TALE - LIGHTING RESEARCH
BOHEMIA - LIGHTING EMOTIONAL RESPONSE





THE WINTER'S TALE - LIGHTING RESEARCH
PAULINA'S CHAPEL - POST SUNRISE

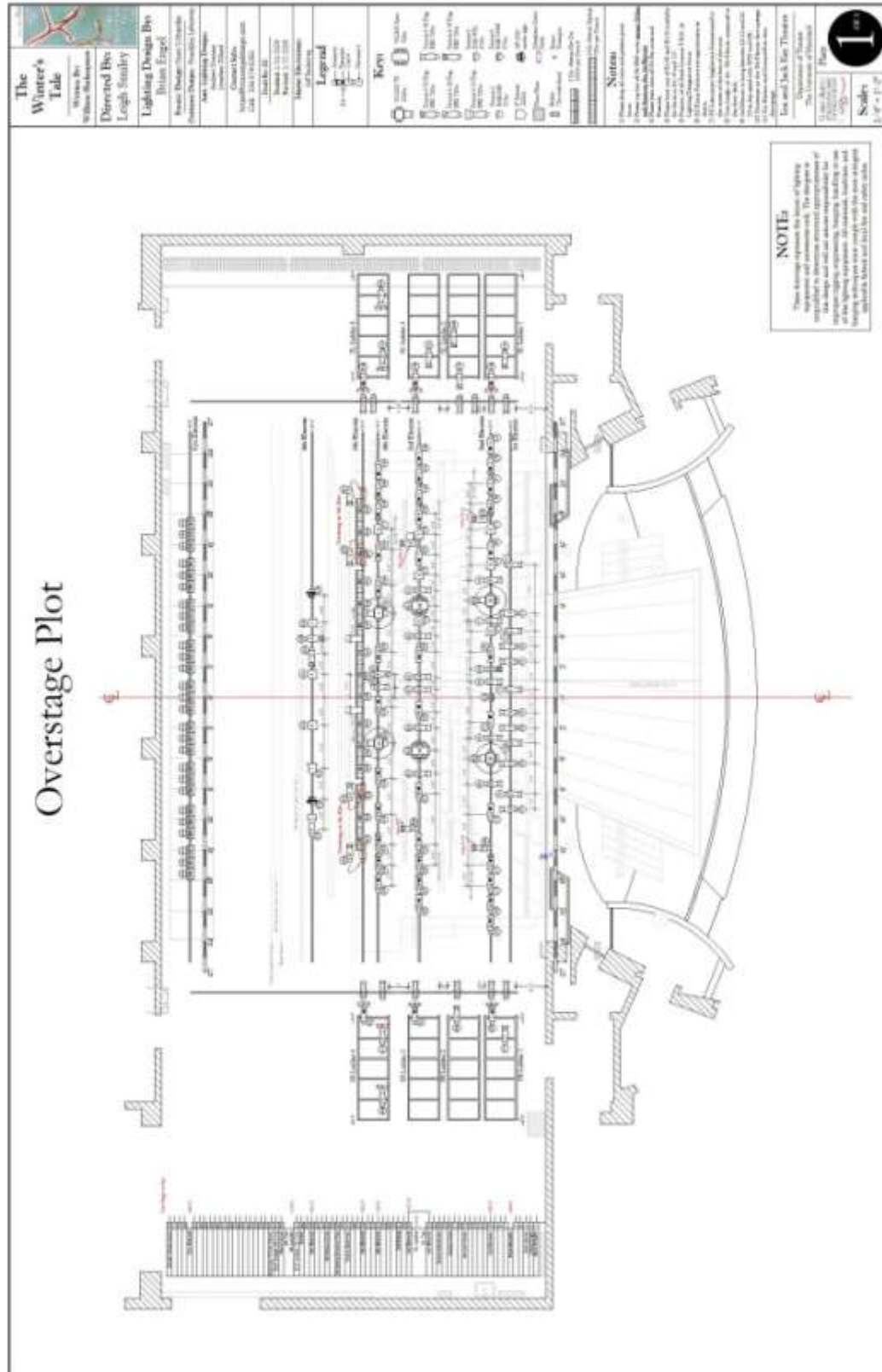


THE WINTER'S TALE - LIGHTING RESEARCH
PAULINA'S CHAPEL - SUNRISE

APPENDIX B: SCENIC GROUND PLAN



APPENDIX B: LIGHTING PLOT



APPENDIX C: PRE PRODUCTION PAPERWORK

PRELIMINARY WISHLIST

General Ideas:

Cecilia is vertically driven ⇕

- Cold – Blue/Green – Arc sources
- More Specific – Top Light Driven with Followspots.

Bohemia is horizontally driven ↔

- Warm – Yellows/Amber – Wheat and Sun
- More low angles and expansive.

Other Locations – Inbetween

- How are spaces defined? Hard edged vs. soft edge

Area Systems:

- Front Light
 - Face Light
 - Plays in both Cecilia and Bohemia
 - Follow set-pushing <L (neut. Lav.)
- Down Light
 - w/ Faders?
 - Straight down
 - Cut people away from the set.
 - Will play in Cecil. + Boh.
- Top Light
 - Push from SR
 - Toned for Cecil.

Zones:

- High Side
 - Patterned for Cecil.
 - Linear and Hard
- Pipe End
 - For Boh.
 - Patterned softer, than High Side
 - Organic
- Back Diag <UL
 - In Cecil.-push from UL
- Back Diag UR>
 - In Boh.- push from UR

- Low Angle <L
 - From Balc Rail L
 - Color control
 - Toning System
- Low Angle R>
 - From Balc Rail R
 - Color Control
 - Toning System
- Head High Highlight
 - At 7'-0"
 - Can continue off Balc. Rail
 - Neut. (Lav)

Specials:

- US
 - For Hermione
 - For Glass Box moment at end "I'm a Statue"
- DS
 - 3 across stage for Jail
- Train Station (MS Left?)
 - Bench special
- Herm. Trial Scene
 - @ C
 - From Balc. Rail
- Movers
 - DL Apron
 - DL Portal 1
 - CL Portal 2
 - UL of C
 - UR of C
 - CR Portal 2
 - DR Portal
- Effects
 - Lightning
 - Waterish seashore thing
 - Rotators? Deck mount rovers?
 - Magic for the bear
- Magic for Mam. Dies-shattering effect (back wall splits)
 - 3 2Ks
 - CYC at FL
- Magic for Herm. Brought back to life
 - Internal Box Mount?

Scenic Tools:

- Clock
- Pendulums light boxes
- Wheat
 - 3 in wheat wagons
- Back Wall
 - Color Control
 - Slashing
 - Can't reveal back wall as two pieces
 - R> and <L to break up symmetry
 - Mini Strip booms
 - Tail downs?
 - Mini Strips across top "framing"
 - Ground row set US of wall
 - shooting up for wagons
- Plexi Lights
 - Color Control
- Flat from wings for top "Truss special"
- Portal lighting
 - Could come from Balc. Rail
 - Slashing
 - Pushing out from C
 - Third push sideways from wings
 - Portal Texture??
 - Birdies
- CYC
 - Cloud Texture
 - Cecil. Texture-end show
 - CYC Elec.
 - CYC Ground row

ROUGH WISHLIST

Rough Wish List

The Winter's Tale

Area Tools

Front Light -Pushing From House Right (Following Set Line)-Face Light - Neutral Lav						
CH#	Focus	Unit Type	Notes	Position	Color	Temp.
1	A	ERS				
2	B	ERS				
3	C	ERS				
4	D	ERS				
5	E	ERS				
6	F	ERS				
7	G	ERS				
8	H	ERS				
9	J	ERS				
10	K	ERS				
11	L	ERS				
12	M	ERS				
13	N	ERS				
14	O	ERS				
15	P	ERS				
16	Q	ERS				
17	R	ERS				
18	S	ERS				
19	T	ERS				
20	U	ERS				
21	W	ERS				
22	X	ERS				
23	Y	ERS				
24	Z	ERS				
25	AA	ERS				
26	BB	ERS				

The Winter's Tale

Top Light - Pushing From House Left-Toned For Cecelia						
CH#	Focus	Unit Type	Notes	Position	Color	Temp.
31	A	ERS				
32	B	ERS				
33	C	ERS				
34	D	ERS				
35	E	ERS				
36	F	ERS				
37	G	ERS				
38	H	ERS				
39	J	ERS				
40	K	ERS				
41	L	ERS				
42	M	ERS				
43	N	ERS				
44	O	ERS				
45	P	ERS				
46	Q	ERS				
47	R	ERS				
48	S	ERS				
49	T	ERS				
50	U	ERS				
51	W	ERS				
52	X	ERS				
53	Y	ERS				
54	Z	ERS				
55	AA	ERS				
56	BB	ERS				

The Winter's Tale

Down Light - Used as Back Light In Both Cecilia And Bohemia						
CH#	Focus	Unit Type	Notes	Position	Color	Temp.
61	A	ERS				
62	B	ERS				
63	C	ERS				
64	D	ERS				
65	E	ERS				
66	F	ERS				
67	G	ERS				
68	H	ERS				
69	J	ERS				
70	K	ERS				
71	L	ERS				
72	M	ERS				
73	N	ERS				
74	O	ERS				
75	P	ERS				
76	Q	ERS				
77	R	ERS				
78	S	ERS				
79	T	ERS				
80	U	ERS				
81	W	ERS				
82	X	ERS				
83	Y	ERS				
84	Z	ERS				
85	AA	ERS				
86	BB	ERS				

The Winter's Tale

Lane Tools

SL High Side Light -Patterned for Cecilia(Linear, Focused Sharp)						
CH#	Focus	Unit Type	Notes	Position	Color	Temp.
91	Z-1	ERS				
92	Z-2	ERS				
93	Z-3	ERS				
94	Z-4	ERS				
95	Z-5	ERS				
96	Z-6	ERS				
97	Z-7	ERS				
98	Z-8	ERS				
99	Z-9	ERS				
100	Z-10	ERS				
101	Z-11	ERS				
102	Z-12	ERS				
103	Z-13	ERS				
104	Z-14	ERS				
105	Z-15	ERS				

SR High Side Light - Patterned for Cecilia (Linear, Focused Sharp)						
CH#	Focus	Unit Type	Notes	Position	Color	Temp.
111	Z-1	ERS				
112	Z-2	ERS				
113	Z-3	ERS				
114	Z-4	ERS				
115	Z-5	ERS				
116	Z-6	ERS				
117	Z-7	ERS				
118	Z-8	ERS				
119	Z-9	ERS				
120	Z-10	ERS				
121	Z-11	ERS				
122	Z-12	ERS				
123	Z-13	ERS				
124	Z-14	ERS				
125	Z-15	ERS				

The Winter's Tale

SL Pipe End Side Light - Patterned for Boh. (Organic, Focused In from Sharp)						
CH#	Focus	Unit Type	Notes	Position	Color	Temp.
131	Z-1	ERS				
132	Z-2	ERS				
133	Z-3	ERS				
134	Z-4	ERS				
135	Z-5	ERS				
136	Z-6	ERS				
137	Z-7	ERS				
138	Z-8	ERS				
139	Z-9	ERS				
140	Z-10	ERS				
141	Z-11	ERS				
142	Z-12	ERS				
143	Z-13	ERS				
144	Z-14	ERS				
145	Z-15	ERS				

SR Pipe End Side Light - Patterned for Boh. (Organic, Focused In from Sharp)						
CH#	Focus	Unit Type	Notes	Position	Color	Temp.
151	Z-1	ERS				
152	Z-2	ERS				
153	Z-3	ERS				
154	Z-4	ERS				
155	Z-5	ERS				
156	Z-6	ERS				
157	Z-7	ERS				
158	Z-8	ERS				
159	Z-9	ERS				
160	Z-10	ERS				
161	Z-11	ERS				
162	Z-12	ERS				
163	Z-13	ERS				
164	Z-14	ERS				
165	Z-15	ERS				

The Winter's Tale

USL Back Diag - For Cecillia - w/ movers - Single Source motivated. color to match. Punt.

CH#	Focus	Unit Type	Notes	Position	Color	Temp.
171		ERS				
172		ERS				
173		ERS				
174		ERS				
175		ERS				

USR Back Diag - For Boh. - w/ movers - Single Source motivated. color to match. Punt.

CH#	Focus	Unit Type	Notes	Position	Color	Temp.
176		ERS				
177		ERS				
178		ERS				
179		ERS				
180		ERS				

HR Balc. Rail - With Faders - Toning and wash tool.

CH#	Focus	Unit Type	Notes	Position	Color	Temp.
181	L	ERS			Fdr.	
182	LC	ERS			Fdr.	
183	C	ERS			Fdr.	
184	RC	ERS			Fdr.	
185	R	ERS			Fdr.	

HL Balc. Rail - With Faders - Toning and wash tool.

CH#	Area	Unit Type	Notes	Position	Color	Temp.
186	L	ERS			Fdr.	
187	LC	ERS			Fdr.	
188	C	ERS			Fdr.	
189	RC	ERS			Fdr.	
190	R	ERS			Fdr.	

The Winter's Tale

Head High Side Light - vert. 9' ish- w/ faders - Low interesting sculpting angle						
CH#	Area	Unit Type	Notes	Position	Color	Temp.
191	SL Ln 1	ERS			Fdr.	
192	SL Ln 2	ERS			Fdr.	
193	SL Ln 3	ERS			Fdr.	
194	SL Ln 4	ERS			Fdr.	
195	SL Ln 5	ERS			Fdr.	
196	SL Ln 6	ERS			Fdr.	
196	SR Ln 1	ERS			Fdr.	
197	SR Ln 2	ERS			Fdr.	
198	SR Ln 3	ERS			Fdr.	
199	SR Ln 4	ERS			Fdr.	
200	SR Ln 5	ERS			Fdr.	
201	SR Ln 6	ERS			Fdr.	

Foot Lights - Buried in Lip of Deck						
CH#	Area	Unit Type	Notes	Position	Color	Temp.
206	L	Birdie			Fdr.	
207	LC	Birdie			Fdr.	
208	C	Birdie			Fdr.	
209	RC	Birdie			Fdr.	
210	R	Birdie			Fdr.	

Specials

Massage Tables - Down - Opening Scene - Establish Place and Language.						
CH#	Area	Unit Type	Notes	Position	Color	Temp.
211		ERS				
212		ERS				

Jail Passage way - Down - Shuttered to floor squares						
CH#	Area	Unit Type	Notes	Position	Color	Temp.
213		ERS				
214		ERS				
215		ERS				

Train Station - Down - Bench Special - Soft Pool						
CH#	Area	Unit Type	Notes	Position	Color	Temp.
216		PAR				

The Winter's Tale

Trial Scene - Accentuate Vertical from US Door - Play on Floor - From Balc. Rail						
CH#	Area	Unit Type	Notes	Position	Color	Temp.
217		ERS				

Wall Shatters - Beams + Haze through wall - US of Back Wall						
CH#	Area	Unit Type	Notes	Position	Color	Temp.
218		8" Fresnel				
218		8" Fresnel				
218		8" Fresnel				
219		Haze				
220		Haze Fan				

Water Effect - PAR Floor Mount.						
CH#	Area	Unit Type	Notes	Position	Color	Temp.
221		PAR				
222		PAR				

Bear Specials -						
CH#	Area	Unit Type	Notes	Position	Color	Temp.
223		8" Fresnel	Bear Head From SR			
224		ERS	Shin From DSL			

Hermoine's Glass Box - specials and magic						
CH#	Area	Unit Type	Notes	Position	Color	Temp.
225		VNSP	Down Sp.			
226		MR-16		Internal		

Scenic Tools

Scenic specific elements						
CH#	Area	Unit Type	Notes	Position	Color	Temp.
231		ERS	Clock			
232		ERS	Clock			
233		ropelight	Pendulum			
234		PAR	Wheat			
235		PAR	Wheat			
236		PAR	Wheat			

The Winter's Tale

Portal Reveals - Translucent - Back Lit - w/ Faders						
CH#	Area	Unit Type	Notes	Position	Color	Temp.
251	DSL	ERS			Fdr.	
252	DSL	ERS			Fdr.	
253	DSC	ERS			Fdr.	
254	DSC	ERS			Fdr.	
255	DSR	ERS			Fdr.	
256	DSR	ERS			Fdr.	
257	MSL	ERS			Fdr.	
258	MSC	ERS			Fdr.	
259	MSC	ERS			Fdr.	
260	MSR	ERS			Fdr.	
261	USL	ERS			Fdr.	
262	USC	ERS			Fdr.	
263	USC	ERS			Fdr.	
264	USR	ERS			Fdr.	

Portal Reveal Up Lights						
CH#	Area	Unit Type	Notes	Position	Color	Temp.
265	DSL	Birdie / Inkie				
266	DSR	Birdie / Inkie				
267	MSL	Birdie / Inkie				
268	MSR	Birdie / Inkie				
269	USL	Birdie / Inkie				
270	USR	Birdie / Inkie				

Portal Facing - Flat Front -						
CH#	Area	Unit Type	Notes	Position	Color	Temp.
271	DSL	ERS		Balc. Box		
272	DSC	ERS		?		
273	DSC	ERS		?		
274	DSR	ERS		Balc. Box		
275	MSL	ERS		Balc. Box		
276	MSC	ERS		Midrail		
277	MSC	ERS		Midrail		
278	MSR	ERS		Balc. Box		
279	USL	ERS		Balc. Box		
280	USC	ERS		Midrail		
281	USC	ERS		Midrail		
282	USR	ERS		Balc. Box		

The Winter's Tale

Portal Slashes - From Offstage Pushing up and on,						
CH#	Area	Unit Type	Notes	Position	Color	Temp.
283	DSL	VNSP				
284	DSR	VNSP				
285	MSL	VNSP				
286	MSR	VNSP				
287	USL	VNSP				
288	USR	VNSP				

Back Wall - Color Control						
CH#	Area	Unit Type	Notes	Position	Color	Temp.
291	SL	Mini Strip	Hung Vertically			
292	SL	Mini Strip	Hung Vertically			
293	SL	Mini Strip	Hung Vertically			
294	SR	Mini Strip	Hung Vertically			
295	SR	Mini Strip	Hung Vertically			
296	SR	Mini Strip	Hung Vertically			

Back Wall Slashes						
CH#	Area	Unit Type	Notes	Position	Color	Temp.
297	SL	ERS				
298	SL	ERS				
299	SR	ERS				
300	SR	ERS				

Ground Row for Mt. Range - Under US Deck edge						
CH#	Area	Unit Type	Notes	Position	Color	Temp.
301		Mini Strip				
302		Mini Strip				
303		Mini Strip				
301		Mini Strip				
302		Mini Strip				
303		Mini Strip				

The Winter's Tale

Cyc Electric						
CH#	Area	Unit Type	Notes	Position	Color	Temp.
311		Cyc				
312		Cyc				
313		Cyc				

Ground Row						
CH#	Area	Unit Type	Notes	Position	Color	Temp.
314		Ground Row				
315		Ground Row				
316		Ground Row				

Proscenium Treatment - Patt. To hide excessive dump						
CH#	Area	Unit Type	Notes	Position	Color	Temp.
321		ERS				
322		ERS				
323		ERS				
324		ERS				
325		ERS				
326		ERS				

VL1000's - Magic and What not						
CH#	Area	Unit Type	Notes	Position	Color	Temp.
401	DSL	VL1000				
402	MSL	VL1000				
403	USL	VL1000				
404	DSR	VL1000				
405	MSR	VL1000				
406	USR	VL1000				

VL2000 - More Magic						
CH#	Area	Unit Type	Notes	Position	Color	Temp.
411	USL	VL2000				
412	USR	VL2000				

FINAL WISHLIST

Final Wishlist

Last update by BE

The Winter's Tale

Area Tools

Front Light -Pushing From House Right (Following Set Line)-Face Light - Neutral Lav						
CH#	Focus	Unit Type	Notes	Position	Color	Temp.
1	A	10° ERS		Cat 3 Low	R54	
2	B	10° ERS		Cat 3 Low	R54	
3	C	10° ERS		Cat 3 Low	R54	
4	D	10° ERS		Cat 3 Low	R54	
5	E	10° ERS		Cat 3 Low	R54	
6	F	10° ERS		Cat 3 Low	R54	
7	G	10° ERS		Cat 3 Low	R54	
8	H	10° ERS		Cat 3 Low	R54	
9	J	10° ERS		Cat 3 Low	R54	
10	K	10° ERS		Cat 3 Low	R54	
11	L	19° ERS		Cat 2 High	R54	
12	M	19° ERS		Cat 2 High	R54	
13	N	19° ERS		Cat 2 High	R54	
14	O	19° ERS		Cat 2 High	R54	
15	P	19° ERS		Cat 2 High	R54	
16	Q	10° ERS		Cat 2 Low	R54	
17	R	10° ERS		Cat 2 Low	R54	
18	S	10° ERS		Cat 2 Low	R54	
19	T	10° ERS		Cat 2 Low	R54	
20	U	10° ERS		Cat 2 Low	R54	
21	W	19° ERS		Cat 1 High	R54	
22	X	19° ERS		Cat 1 High	R54	
23	Y	19° ERS		Cat 1 High	R54	
24	Z	19° ERS		Cat 1 High	R54	
25	AA	19° ERS		Cat 1 High	R54	
26	BB	36° ERS		1 st Elec.	R54	

The Winter's Tale

Top Light - Pushing From House Left-Toned For Sicilia						
CH#	Focus	Unit Type	Notes	Position	Color	Temp.
31	A	19° ERS		Cat 2 Low	R361	
32	B	19° ERS		Cat 2 Low	R361	
33	C	19° ERS		Cat 2 Low	R361	
34	D	19° ERS		Cat 2 Low	R361	
35	E	19° ERS		Cat 2 Low	R361	
36	F	19° ERS		Cat 2 Low	R361	
37	G	19° ERS		Cat 2 Low	R361	
38	H	19° ERS		Cat 2 Low	R361	
39	J	19° ERS		Cat 2 Low	R361	
40	K	19° ERS		Cat 2 Low	R361	
41	L	26° ERS		Cat 1 High	R361	
42	M	26° ERS		Cat 1 High	R361	
43	N	26° ERS		Cat 1 High	R361	
44	O	26° ERS		Cat 1 Low	R361	
45	P	26° ERS		Cat 1 Low	R361	
46	Q	19° ERS		Cat 1 High	R361	
47	R	19° ERS		Cat 1 High	R361	
48	S	19° ERS		Cat 1 High	R361	
49	T	19° ERS		Cat 1 High	R361	
50	U	19° ERS		Cat 1 High	R361	
51	W	36° ERS		1 st Elec.	R361	
52	X	36° ERS		1 st Elec.	R361	
53	Y	36° ERS		1 st Elec.	R361	
54	Z	36° ERS		1 st Elec.	R361	
55	AA	36° ERS		1 st Elec.	R361	
56	BB	36° ERS		1 st Elec.	R361	

The Winter's Tale

Down Light - Used as Back Light In Both Sicilia And Bohemia						
CH#	Focus	Unit Type	Notes	Position	Color	Temp.
61	A	26° ERS		Cat 1	R364	
62	B	26° ERS		Cat 1	R364	
63	C	26° ERS		Cat 1	R364	
64	D	26° ERS		Cat 1	R364	
65	E	26° ERS		Cat 1	R364	
66	F	26° ERS		Cat 1	R364	
67	G	26° ERS		Cat 1	R364	
68	H	26° ERS		Cat 1	R364	
69	J	26° ERS		Cat 1	R364	
70	K	26° ERS		Cat 1	R364	
71	L	36° ERS		1 st Elec.	R364	
72	M	36° ERS		1 st Elec.	R364	
73	N	36° ERS		1 st Elec.	R364	
74	O	36° ERS		1 st Elec.	R364	
75	P	36° ERS		1 st Elec.	R364	
76	Q	36° ERS		2 nd Elec.	R364	
77	R	36° ERS		2 nd Elec.	R364	
78	S	36° ERS		2 nd Elec.	R364	
79	T	36° ERS		2 nd Elec.	R364	
80	U	36° ERS		2 nd Elec.	R364	
81	W	36° ERS		3 rd Elec.	R364	
82	X	36° ERS		3 rd Elec.	R364	
83	Y	36° ERS		3 rd Elec.	R364	
84	Z	36° ERS		3 rd Elec.	R364	
85	AA	36° ERS		3 rd Elec.	R364	
86	BB	50° ERS		4 th Elec.	R364	

The Winter's Tale

Lane Tools

SL High Side Light -Patterned for Sicilia(Linear, Focused Sharp) Construction D						
CH#	Focus	Unit Type	Notes	Position	Color	Temp.
91	Z-1	36° ERS		Tech Box Low	R355	G697
92	Z-2	26° ERS		Tech Box High	R355	G697
93	Z-3	26° ERS		Cat 1	R355	G697
94	Z-4	26° ERS		SL Slot	R355	G697
95	Z-5	26° ERS		SL Slot	R355	G697
96	Z-6	26° ERS		Cat 1	R355	G697
97	Z-7	36° ERS		2 nd Elec.	R355	G697
98	Z-8	36° ERS		2 nd Elec.	R355	G697
99	Z-9	36° ERS		2 nd Elec.	R355	G697
100	Z-10	36° ERS		3 rd Elec	R355	G697
101	Z-11	36° ERS		3 rd Elec	R355	G697
102	Z-12	36° ERS		3 rd Elec	R355	G697
103	Z-13	36° ERS		4 th Elec.	R355	G697
104	Z-14	36° ERS		4 th Elec.	R355	G697
105	Z-15	36° ERS		4 th Elec.	R355	G697

SR High Side Light - Patterned for Sicilia (Linear, Focused Sharp) Construction D						
CH#	Focus	Unit Type	Notes	Position	Color	Temp.
111	Z-1	26° ERS		Cat 1	R355	G697
112	Z-2	26° ERS		Tech Box High	R355	G697
113	Z-3	36° ERS		Tech Box Low	R355	G697
114	Z-4	26° ERS		Cat 1	R355	G697
115	Z-5	26° ERS		SR Slot	R355	G697
116	Z-6	26° ERS		SR Slot	R355	G697
117	Z-7	36° ERS		2 nd Elec.	R355	G697
118	Z-8	36° ERS		2 nd Elec.	R355	G697
119	Z-9	36° ERS		2 nd Elec.	R355	G697
120	Z-10	36° ERS		3 rd Elec	R355	G697
121	Z-11	36° ERS		3 rd Elec	R355	G697
122	Z-12	36° ERS		3 rd Elec	R355	G697
123	Z-13	36° ERS		4 th Elec.	R355	G697
124	Z-14	36° ERS		4 th Elec.	R355	G697
125	Z-15	36° ERS		4 th Elec.	R355	G697

The Winter's Tale

SL Pipe End Side Light - Patterned for Boh. (Organic, Focused In from Sharp) Realistic Leaves

CH#	Focus	Unit Type	Notes	Position	Color	Temp.
131	Z-1	36° ERS		Tech Box Low	R08	R7732
132	Z-2	26° ERS		Tech Box High	R08	R7732
133	Z-3	19° ERS		Tech Box High	R08	R7732
134	Z-4	26° ERS		SL Slot	R08	R7732
135	Z-5	26° ERS		SL Slot	R08	R7732
136	Z-6	19° ERS		SL Slot	R08	R7732
137	Z-7	36° ERS		2 nd Elec.	R08	R7732
138	Z-8	26° ERS		2 nd Elec.	R08	R7732
139	Z-9	19° ERS		2 nd Elec.	R08	R7732
140	Z-10	36° ERS		3 rd Elec.	R08	R7732
141	Z-11	26° ERS		3 rd Elec.	R08	R7732
142	Z-12	26° ERS		3 rd Elec.	R08	R7732
143	Z-13	36° ERS		4 th Elec.	R08	R7732
144	Z-14	26° ERS		4 th Elec.	R08	R7732
145	Z-15	26° ERS		4 th Elec.	R08	R7732

SR Pipe End Side Light - Patterned for Boh. (Organic, Focused In from Sharp) Realistic Leaves

CH#	Focus	Unit Type	Notes	Position	Color	Temp.
151	Z-1	19° ERS		Tech Box High	R08	R7732
152	Z-2	26° ERS		Tech Box High	R08	R7732
153	Z-3	36° ERS		Tech Box Low	R08	R7732
154	Z-4	19° ERS		SR Slot	R08	R7732
155	Z-5	26° ERS		SR Slot	R08	R7732
156	Z-6	36° ERS		SR Slot	R08	R7732
157	Z-7	19° ERS		2 nd Elec.	R08	R7732
158	Z-8	26° ERS		2 nd Elec.	R08	R7732
159	Z-9	26° ERS		2 nd Elec.	R08	R7732
160	Z-10	26° ERS		3 rd Elec.	R08	R7732
161	Z-11	26° ERS		3 rd Elec.	R08	R7732
162	Z-12	36° ERS		3 rd Elec.	R08	R7732
163	Z-13	26° ERS		4 th Elec.	R08	R7732
164	Z-14	26° ERS		4 th Elec.	R08	R7732
165	Z-15	36° ERS		4 th Elec.	R08	R7732

The Winter's Tale

USL Back Diag - For Sicilia - Single Source motivated. color to match.

CH#	Focus	Unit Type	Notes	Position	Color	Temp.
171	DL	8" Fresnel		2 nd Elec.	L202	
172	DC	8" Fresnel		2 nd Elec.	L202	
173	DR	8" Fresnel		2 nd Elec.	L202	
174	CL	8" Fresnel		3 rd Elec.	L202	
175	CC	8" Fresnel		3 rd Elec.	L202	
176	CR	8" Fresnel		3 rd Elec.	L202	
177	UL	8" Fresnel		4 th Elec.	L202	

HR Balc. Rail - With Faders - Toning and wash tool. w/ template Autumn Breakup

CH#	Focus	Unit Type	Notes	Position	Color	Temp.
181	L	26° ERS		Balc Rail	Fdr.	R7572
182	C	26° ERS		Balc Rail	Fdr.	R7572
183	R	26° ERS		Balc Rail	Fdr.	R7572

HL Balc. Rail - With Faders - Toning and wash tool. w/ template Autumn Breakup

CH#	Focus	Unit Type	Notes	Position	Color	Temp.
184	L	26° ERS		Balc Rail	Fdr.	R7572
185	C	26° ERS		Balc Rail	Fdr.	R7572
186	R	26° ERS		Balc Rail	Fdr.	R7572

Head High Side Light - vert. 9' ish- w/ faders - Low interesting sculpting angle Autumn Breakup

CH#	Focus	Unit Type	Notes	Position	Color	Temp.
191	SL Ln 1	36° ERS		Balc Box	Fdr.	R7572
192	SL Ln 2	26° ERS		SL Slot	Fdr.	R7572
193	SL Ln 3	26° ERS		SL Boom 1	Fdr.	R7572
194	SL Ln 4	26° ERS		SL Ladder 1	Fdr.	R7572
195	SL Ln 5	26° ERS		SL Ladder 3	Fdr.	R7572
196	SL Ln 6	26° ERS		SL Ladder 4	Fdr.	R7572
197	SR Ln 1	36° ERS		Balc Box	Fdr.	R7572
198	SR Ln 2	26° ERS		SR Slot	Fdr.	R7572
199	SR Ln 3	26° ERS		SR Boom 1	Fdr.	R7572
200	SR Ln 4	26° ERS		SR Ladder 1	Fdr.	R7572
201	SR Ln 5	26° ERS		SR Ladder 3	Fdr.	R7572
202	SR Ln 6	26° ERS		SR Ladder 4	Fdr.	R7572

The Winter's Tale

Paulina's Chapel Mini-system - Rays of color through stained glass - Back Diag - Glass Pattern + Window

CH#	Focus	Unit Type	Notes	Position	Color	Temp.
203	DS	26° ERS		SR Ladder 3	Glass	G389
204	US	26° ERS		SR Ladder 4	Glass	G389

Specials

Massage Tables - Down - Opening Scene - Establish Place and Language.

CH#	Focus	Unit Type	Notes	Position	Color	Temp.
210	L	NSP	Left Table	Cat 1 Low	N/C	
211	R	NSP	Right Table	Cat 1 Low	N/C	

Jail Passage way - Down - Shuttered to floor squares

CH#	Focus	Unit Type	Notes	Position	Color	Temp.
213		26° ERS		SL Balc Box	R87	

Trial Scene

CH#	Focus	Unit Type	Notes	Position	Color	Temp.
216		19° ERS	UC Door	Balc Rail	N/C	
217		36° ERS	HL Box	Cat 2	N/C	
218		19° ERS	HL Box - shallow fill	SL Slot	L201	

Wall Split - Beams + Haze through wall - US of Back Wall

CH#	Focus	Unit Type	Notes	Position	Color	Temp.
222		8" Fresnel		6 th Elec	N/C	
221		8" Fresnel		6 th Elec	N/C	
222		8" Fresnel		6 th Elec	N/C	
223		Haze		US Deck		
224		Haze Fan		US Deck		

Hermoine's Glass Box - specials and magic

CH#	Focus	Unit Type	Notes	Position	Color	Temp.
226		VNSP	Down Sp.	2 nd Elec	N/C	
227		MR-16		Internal	N/C	

The Winter's Tale

Mamilius Story telling Specials						
CH#	Focus	Unit Type	Notes	Position	Color	Temp.
228	DSR	19° ERS w/ Iris	Down Sp.	Cat 2	N/C	
229	DC	19° ERS w/ Iris	Down Sp.	2 nd Elec	N/C	

Sea Shore Specials						
CH#	Focus	Unit Type	Notes	Position	Color	Temp.
231	Bear	8" Fresnel	Bear Head From SR	6 th Elec	R318	
232	Bear	26° ERS	Shin From DSL	SL Ladder 2 Low	R318	
233	Boat	8" Fresnel	Boat - dark sky	6 th Elec	L200	
234	Boat	19° ERS	Boat Water Bounce	6 th Elec	L200	
235	Hermione Ghost	19° ERS	Water Bounce	6 th Elec	L200	
236-S.A.	DS	AF 150		Cat 1 Low		

Scenic Tools

Scenic specific elements						
CH#	Focus	Unit Type	Notes	Position	Color	Temp.
241		19° ERS w/ Iris	Clock	Balc Rail	N/C	
242		19° ERS w/ Iris	Clock	Balc Rail	R76	
243		ropelight	Pendulum			
244		ropelight	Sun			
245		WFL	Wheat		R316	
246		WFL	Wheat		R316	
247		WFL	Wheat		R316	
Portal Reveal Up Lights - Cool						
CH#	Focus	Unit Type	Notes	Position	Color	Temp.
251	DSL	Birdie / Inkie		Deck Mount	N/C	
252	DSR	Birdie / Inkie		Deck Mount	N/C	
253	MSL	Birdie / Inkie		Deck Mount	N/C	
254	MSR	Birdie / Inkie		Deck Mount	N/C	
255	USL	Birdie / Inkie		Deck Mount	N/C	
256	USR	Birdie / Inkie		Deck Mount	N/C	

The Winter's Tale

Portal Reveal Down Lights - Cool						
CH#	Focus	Unit Type	Notes	Position	Color	Temp.
257	DSL	Birdie / Inkie		Deck Mount	N/C	
258	DSR	Birdie / Inkie		Deck Mount	N/C	
259	MSL	Birdie / Inkie		Deck Mount	N/C	
260	MSR	Birdie / Inkie		Deck Mount	N/C	
261	USL	Birdie / Inkie		Deck Mount	N/C	
262	USR	Birdie / Inkie		Deck Mount	N/C	

Portal Reveals - Translucent - Back Lit -						
CH#	Focus	Unit Type	Notes	Position	Color	Temp.
263	DSL	26° ERS		1 st Elec.	N/C	
264	DSR	26° ERS		1 st Elec.	N/C	
265	MSL	19° ERS		SL Ladder 2	N/C	
266	MSR	19° ERS		SR Ladder 2	N/C	
267	USL	19° ERS		SL Ladder 4	N/C	
268	USR	19° ERS		SR Ladder 4	N/C	

Portal Facing - Flat Front - w/ template						
CH#	Focus	Unit Type	Notes	Position	Color	Temp.
271	DSL	26° ERS		Balc. Box	R364	G629
271	DSL	26° ERS		Balc. Box	R364	G629
272	DSR	26° ERS	Xing Center	Balc Box	R364	G629
272	DSR	26° ERS	Xing Center	Balc Box	R364	G629
273	DSC	26° ERS		Balc. Box	R364	G629
274	DSC	26° ERS		Balc. Box	R364	G629
275	MSL	26° ERS		SL Ladder 1	R364	G629
276	MSR	26° ERS	Xing Center	Ladder	R364	G629
277	MSC	26° ERS	Xing Center	Ladder	R364	G629
278	MSC	26° ERS		SR Ladder 1	R364	G629
279	USL	26° ERS		SL Ladder 2	R364	G629
280	USR	26° ERS	Xing Center	Ladder	R364	G629
281	USC	26° ERS	Xing Center	Ladder	R364	G629
282	USC	26° ERS		SR Ladder 2	R364	G629

The Winter's Tale

Portal Slashes - From Offstage Pushing up and on,						
CH#	Focus	Unit Type	Notes	Position	Color	Temp.
283	DSL	VNSP		Deck Mount	N/C	
284	MSL	VNSP		Deck Mount	N/C	
285	USL	VNSP		Deck Mount	N/C	
286	DSR	VNSP		Deck Mount	N/C	
287	MSR	VNSP		Deck Mount	N/C	
288	USR	VNSP		Deck Mount	N/C	

Back Wall - Color Control - From Above- 6 Units						
CH#	Focus	Unit Type	Notes	Position	Color	Temp.
291	SL	Mini Strip		5 th Elec	R361	
292	SL	Mini Strip		5 th Elec	R59	
293	SL	Mini Strip		5 th Elec	L202	
294	C	Mini Strip		5 th Elec	R361	
295	C	Mini Strip		5 th Elec	R59	
296	C	Mini Strip		5 th Elec	L202	
297	SR	Mini Strip		5 th Elec	R361	
298	SR	Mini Strip		5 th Elec	R59	
299	SR	Mini Strip		5 th Elec	L202	

Back Wall Slashes						
CH#	Focus	Unit Type	Notes	Position	Color	Temp.
301	SL	50° ERS	Over Hung	5 th Elec	N/C	
302	SL	50° ERS	Over Hung	5 th Elec	N/C	
303	SR	50° ERS	Over Hung	5 th Elec	N/C	
304	SR	50° ERS	Over Hung	5 th Elec	N/C	

Ground Row for Mt. Range - Under US Deck edge- 6 Units						
CH#	Focus	Unit Type	Notes	Position	Color	Temp.
311	SL	Mini Strip		Deck Mount	R361	
312	SL	Mini Strip		Deck Mount	R59	
313	SL	Mini Strip		Deck Mount	R18	
314	C	Mini Strip		Deck Mount	R361	
315	C	Mini Strip		Deck Mount	R59	
316	C	Mini Strip		Deck Mount	R18	
317	SR	Mini Strip		Deck Mount	R361	
318	SR	Mini Strip		Deck Mount	R59	
319	SR	Mini Strip		Deck Mount	R18	

The Winter's Tale

Proscenium Treatment - Patt. To hide excessive dump Random Lines

CH#	Focus	Unit Type	Notes	Position	Color	Temp.
321	SL Leg	26° ERS		Balc Rail	R355	R8023
322	SL Leg	26° ERS		Balc Rail	R355	R8023
323	SR Leg	26° ERS	Xing Center	Balc Rail	R355	R8023
324	SR Leg	26° ERS	Xing Center	Balc Rail	R355	R8023
325	C	26° ERS		Balc Rail	R355	R8023
326	C	26° ERS		Balc Rail	R355	R8023

Aisle Lights and Stair Downs -

CH#	Focus	Unit Type	Notes	Position	Color	Temp.
331	Upper Aisle	19° ERS		Cat 3	R364	
332	Lower Aisle	19° ERS		Cat 2	R364	
333	SL Stair	26° ERS		Cat1	R364	
334	Upper Aisle	19° ERS		Cat 3	R364	
335	Lower Aisle	19° ERS		Cat 2	R364	
336	SR Stair	26° ERS		Cat 1	R364	

VL1000's - Magic and What not

CH#	Focus	Unit Type	Notes	Position	Color	Temp.
401	DSL	VL1000		SL Tech Box		
402	MSL	VL1000		2nd Elec		
403	USL	VL1000		4th Elec		
404	DSR	VL1000		SR Tech Box		
405	MSR	VL1000		2nd Elec		
406	USR	VL1000		4th Elec		

VL2000 - More Magic

CH#	Focus	Unit Type	Notes	Position	Color	Temp.
411	USL	VL2000		3rd Elec		
412	USR	VL2000		3rd Elec		

The Winter's Tale

CHANNEL HOOKUP

Page 1

10 Mar 2009

Lighting Design: Brian Engel
ALD: Andrew Dorman, Jonathan Dillard

Ina and Jack Kay Theatre
Department of Theatre
University of Maryland

Channel	Purpose	Focus	Unit	Position	Type & Watts	Color & Tmp
(1)	Front	A	2	CAT. #3 Low	Source 4 10deg 750w	R54, T:-
(2)	Front	B	4	CAT. #3 Low	Source 4 10deg 750w	R54, T:-
(3)	Front	C	6	CAT. #3 Low	Source 4 10deg 750w	R54, T:-
(4)	Front	D	9	CAT. #3 Low	Source 4 10deg 750w	R54, T:-
(5)	Front	E	12	CAT. #3 Low	Source 4 10deg 750w	R54, T:-
(6)	Front	F	1	CAT. #3 Low	Source 4 10deg 750w	R54, T:-
(7)	Front	G	3	CAT. #3 Low	Source 4 10deg 750w	R54, T:-
(8)	Front	H	5	CAT. #3 Low	Source 4 10deg 750w	R54, T:-
(9)	Front	J	8	CAT. #3 Low	Source 4 10deg 750w	R54, T:-
(10)	Front	K	11	CAT. #3 Low	Source 4 10deg 750w	R54, T:-
(11)	Front	L	1	CAT. #2 High	Source 4 19deg 750w	R54, T:-
(12)	Front	M	2	CAT. #2 High	Source 4 19deg 750w	R54, T:-
(13)	Front	N	3	CAT. #2 High	Source 4 19deg 750w	R54, T:-
(14)	Front	O	5	CAT. #2 High	Source 4 19deg 750w	R54, T:-
(15)	Front	P	6	CAT. #2 High	Source 4 19deg 750w	R54, T:-
(16)	Front	Q	1	CAT. #2 Low	Source 4 10deg 750w	R54, T:-
(17)	Front	R	2	CAT. #2 Low	Source 4 10deg 750w	R54, T:-
(18)	Front	S	5	CAT. #2 Low	Source 4 10deg 750w	R54, T:-
(19)	Front	T	8	CAT. #2 Low	Source 4 10deg 750w	R54, T:-
(20)	Front	U	12	CAT. #2 Low	Source 4 10deg 750w	R54, T:-
(21)	Front	W	1	CAT. #1 High	Source 4 19deg 750w	R54, T:-
(22)	Front	X	4	CAT. #1 Low	Source 4 19deg 750w	R54, T:-
(23)	Front	Y	8	CAT. #1 Low	Source 4 19deg 750w	R54, T:-
(24)	Front	Z	11	CAT. #1 Low	Source 4 19deg 750w	R54, T:-
(25)	Front	AA	15	CAT. #1 Low	Source 4 19deg 750w	R54, T:-
(26)	Front	BB	5	1st Electric	Source 4 36deg 750w	R54, T:-
(31)	Top	A	7	CAT. #2 Low	Source 4 19deg 750w	R361, T:-
(32)	Top	B	10	CAT. #2 Low	Source 4 19deg 750w	R361, T:-
(33)	Top	C	14	CAT. #2 Low	Source 4 19deg 750w	R361, T:-
(34)	Top	D	18	CAT. #2 Low	Source 4 19deg 750w	R361, T:-

UMD Department of Theatre / Lightwright 4

(1) thru (34)

Channel	Purpose	Focus	Unit	Position	Type & Watts	Color & Tmp
(35)	Top	E	20	CAT. #2 Low	Source 4 19deg 750w	R361, T:-
(36)	Top	F	9	CAT. #2 Low	Source 4 19deg 750w	R361, T:-
(37)	Top	G	13	CAT. #2 Low	Source 4 19deg 750w	R361, T:-
(38)	Top	H	16	CAT. #2 Low	Source 4 19deg 750w	R361, T:-
(39)	Top	J	19	CAT. #2 Low	Source 4 19deg 750w	R361, T:-
(40)	Top	K	21	CAT. #2 Low	Source 4 19deg 750w	R361, T:-
(41)	Top	L	2	CAT. #1 High	Source 4 26deg 750w	R361, T:-
(42)	Top	M	4	CAT. #1 High	Source 4 26deg 750w	R361, T:-
(43)	Top	N	6	CAT. #1 High	Source 4 26deg 750w	R361, T:-
(44)	Top	O	18	CAT. #1 Low	Source 4 26deg 750w	R361, T:-
(45)	Top	P	22	CAT. #1 Low	Source 4 26deg 750w	R361, T:-
(46)	Top	Q	3	CAT. #1 High	Source 4 19deg 575w	R361, T:-
(47)	Top	R	5	CAT. #1 High	Source 4 19deg 575w	R361, T:-
(48)	Top	S	7	CAT. #1 High	Source 4 19deg 575w	R361, T:-
(49)	Top	T	8	CAT. #1 High	Source 4 19deg 575w	R361, T:-
(50)	Top	U	9	CAT. #1 High	Source 4 19deg 575w	R361, T:-
(51)	Top	W	3	1st Electric	Source 4 36deg 750w	R361, T:-
(52)	Top	X	6	1st Electric	Source 4 36deg 750w	R361, T:-
(53)	Top	Y	8	1st Electric	Source 4 36deg 750w	R361, T:-
(54)	Top	Z	11	1st Electric	Source 4 36deg 750w	R361, T:-
(55)	Top	AA	13	1st Electric	Source 4 36deg 750w	R361, T:-
(56)	Top	BB	9	1st Electric	Source 4 36deg 750w	R361, T:-
(61)	Down	A	5	CAT. #1 Low	Source 4 26deg 750w	R364, T:-
(62)	Down	B	7	CAT. #1 Low	Source 4 26deg 750w	R364, T:-
(63)	Down	C	13	CAT. #1 Low	Source 4 26deg 750w	R364, T:-
(64)	Down	D	17	CAT. #1 Low	Source 4 26deg 750w	R364, T:-
(65)	Down	E	20	CAT. #1 Low	Source 4 26deg 750w	R364, T:-
(66)	Down	F	6	CAT. #1 Low	Source 4 26deg 750w	R364, T:-
(67)	Down	G	9	CAT. #1 Low	Source 4 26deg 750w	R364, T:-
(68)	Down	H	12	CAT. #1 Low	Source 4 26deg 750w	R364, T:-
(69)	Down	J	16	CAT. #1 Low	Source 4 26deg 750w	R364, T:-
(70)	Down	K	19	CAT. #1 Low	Source 4 26deg 750w	R364, T:-

Channel	Purpose	Focus	Unit	Position	Type & Watts	Color & Tmp
(71)	Down	L	2	1st Electric	Source 4 36deg 750w	R364, T:-
(72)	Down	M	4	1st Electric	Source 4 36deg 750w	R364, T:-
(73)	Down	N	7	1st Electric	Source 4 36deg 750w	R364, T:-
(74)	Down	O	10	1st Electric	Source 4 36deg 750w	R364, T:-
(75)	Down	P	12	1st Electric	Source 4 36deg 750w	R364, T:-
(76)	Down	Q	9	2nd Electric	Source 4 36deg 750w	R364, T:-
(77)	Down	R	11	2nd Electric	Source 4 36deg 750w	R364, T:-
(78)	Down	S	15	2nd Electric	Source 4 36deg 750w	R364, T:-
(79)	Down	T	18	2nd Electric	Source 4 36deg 750w	R364, T:-
(80)	Down	U	20	2nd Electric	Source 4 36deg 750w	R364, T:-
(81)	Down	W	9	3rd Electric	Source 4 36deg 750w	R364, T:-
(82)	Down	X	12	3rd Electric	Source 4 36deg 750w	R364, T:-
(83)	Down	Y	14	3rd Electric	Source 4 36deg 750w	R364, T:-
(84)	Down	Z	17	3rd Electric	Source 4 36deg 750w	R364, T:-
(85)	Down	AA	19	3rd Electric	Source 4 36deg 750w	R364, T:-
(86)	Down	BB	9	4th Electric	Source 4 50deg 750w	R364, T:-
(91)	SL High Side	Z-1	2	SL Tech Box #1 Low	Source 4 36deg 750w	R355, T:G697
(92)	SL High Side	Z-2	3	SL Tech Box #1 High	Source 4 26deg 750w	R355, T:G697
(93)	SL High Side	Z-3	3	CAT. #1 Low	Source 4 26deg 750w	R355, T:G697
(94)	SL High Side	Z-4	4	SL Slot	Source 4 26deg 750w	R355, T:G697
(95)	SL High Side	Z-5	2	SL Slot	Source 4 26deg 750w	R355, T:G697
(96)	SL High Side	Z-6	2	CAT. #1 Low	Source 4 26deg 750w	R355, T:G697
(97)	SL High Side	Z-7	3	2nd Electric	Source 4 36deg 575w	R355, T:G697
(98)	SL High Side	Z-8	7	2nd Electric	Source 4 36deg 575w	R355, T:G697
(99)	SL High Side	Z-9	13	2nd Electric	Source 4 36deg 575w	R355, T:G697
(100)	SL High Side	Z-10	4	3rd Electric	Source 4 36deg 750w	R355, T:G697
(101)	SL High Side	Z-11	7	3rd Electric	Source 4 36deg 750w	R355, T:G697
(102)	SL High Side	Z-12	13	3rd Electric	Source 4 36deg 750w	R355, T:G697
(103)	SL High Side	Z-13	5	4th Electric	Source 4 36deg 750w	R355, T:G697
(104)	SL High Side	Z-14	6	4th Electric	Source 4 36deg 750w	R355, T:G697
(105)	SL High Side	Z-15	8	4th Electric	Source 4 36deg 750w	R355, T:G697

Channel	Purpose	Focus	Unit	Position	Type & Watts	Color & Temp
(111)	SR High Side	Z-1	21	CAT. #1 Low	Source 4 26deg 750w	R355, T:G697
(112)	SR High Side	Z-2	3	SR Tech Box #1 High	Source 4 26deg 750w	R355, T:G697
(113)	SR High Side	Z-3	3	SR Tech Box #1 Low	Source 4 36deg 750w	R355, T:G697
(114)	SR High Side	Z-4	23	CAT. #1 Low	Source 4 26deg 750w	R355, T:G697
(115)	SR High Side	Z-5	2	SR Slot	Source 4 26deg 750w	R355, T:G697
(116)	SR High Side	Z-6	4	SR Slot	Source 4 26deg 750w	R355, T:G697
(117)	SR High Side	Z-7	17	2nd Electric	Source 4 36deg 575w	R355, T:G697
(118)	SR High Side	Z-8	21	2nd Electric	Source 4 36deg 575w	R355, T:G697
(119)	SR High Side	Z-9	24	2nd Electric	Source 4 36deg 575w	R355, T:G697
(120)	SR High Side	Z-10	16	3rd Electric	Source 4 36deg 750w	R355, T:G697
(121)	SR High Side	Z-11	20	3rd Electric	Source 4 36deg 750w	R355, T:G697
(122)	SR High Side	Z-12	22	3rd Electric	Source 4 36deg 750w	R355, T:G697
(123)	SR High Side	Z-13	11	4th Electric	Source 4 36deg 750w	R355, T:G697
(124)	SR High Side	Z-14	13	4th Electric	Source 4 36deg 750w	R355, T:G697
(125)	SR High Side	Z-15	14	4th Electric	Source 4 36deg 750w	R355, T:G697
(131)	SL Pipe End	Z-1	1	SL Tech Box #1 Low	Source 4 36deg 750w	R08, T:R7732
(132)	SL Pipe End	Z-2	2	SL Tech Box #1 High	Source 4 26deg 750w	R08, T:R7732
(133)	SL Pipe End	Z-3	1	SL Tech Box #1 High	Source 4 19deg 575w	R08, T:R7732
(134)	SL Pipe End	Z-4	5	SL Slot	Source 4 26deg 750w	R08, T:R7732
(135)	SL Pipe End	Z-5	3	SL Slot	Source 4 26deg 750w	R08, T:R7732
(136)	SL Pipe End	Z-6	1	SL Slot	Source 4 19deg 750w	R08, T:R7732
(137)	SL Pipe End	Z-7	1	2nd Electric	Source 4 36deg 750w	R08, T:R7732
(138)	SL Pipe End	Z-8	2	2nd Electric	Source 4 26deg 750w	R08, T:R7732
(139)	SL Pipe End	Z-9	4	2nd Electric	Source 4 19deg 750w	R08, T:R7732
(140)	SL Pipe End	Z-10	1	3rd Electric	Source 4 36deg 750w	R08, T:R7732
(141)	SL Pipe End	Z-11	2	3rd Electric	Source 4 26deg 750w	R08, T:R7732
(142)	SL Pipe End	Z-12	3	3rd Electric	Source 4 26deg 750w	R08, T:R7732
(143)	SL Pipe End	Z-13	1	4th Electric	Source 4 36deg 750w	R08, T:R7732
(144)	SL Pipe End	Z-14	2	4th Electric	Source 4 26deg 750w	R08, T:R7732
(145)	SL Pipe End	Z-15	3	4th Electric	Source 4 26deg 750w	R08, T:R7732

Channel	Purpose	Focus	Unit	Position	Type & Watts	Color & Tmp
(151)	SR Pipe End	Z-1	1	SR Tech Box #1 High	Source 4 19deg 575w	R08, T:R7732
(152)	SR Pipe End	Z-2	2	SR Tech Box #1 High	Source 4 26deg 750w	R08, T:R7732
(153)	SR Pipe End	Z-3	2	SR Tech Box #1 Low	Source 4 36deg 750w	R08, T:R7732
(154)	SR Pipe End	Z-4	1	SR Slot	Source 4 19deg 750w	R08, T:R7732
(155)	SR Pipe End	Z-5	3	SR Slot	Source 4 26deg 750w	R08, T:R7732
(156)	SR Pipe End	Z-6	5	SR Slot	Source 4 26deg 750w	R08, T:R7732
(157)	SR Pipe End	Z-7	23	2nd Electric	Source 4 19deg 750w	R08, T:R7732
(158)	SR Pipe End	Z-8	25	2nd Electric	Source 4 26deg 750w	R08, T:R7732
(159)	SR Pipe End	Z-9	26	2nd Electric	Source 4 36deg 750w	R08, T:R7732
(160)	SR Pipe End	Z-10	23	3rd Electric	Source 4 26deg 750w	R08, T:R7732
(161)	SR Pipe End	Z-11	24	3rd Electric	Source 4 26deg 750w	R08, T:R7732
(162)	SR Pipe End	Z-12	25	3rd Electric	Source 4 36deg 750w	R08, T:R7732
(163)	SR Pipe End	Z-13	15	4th Electric	Source 4 26deg 750w	R08, T:R7732
(164)	SR Pipe End	Z-14	16	4th Electric	Source 4 26deg 750w	R08, T:R7732
(165)	SR Pipe End	Z-15	17	4th Electric	Source 4 36deg 750w	R08, T:R7732
(171)	Back Diag.	DSL	6	2nd Electric	8" Fres 1kw	L202, T:-
(172)	Back Diag.	DSC	8	2nd Electric	8" Fres 1kw	L202, T:-
(173)	Back Diag.	DSR	12	2nd Electric	8" Fres 1kw	L202, T:-
(174)	Back Diag.	MSL	5	3rd Electric	8" Fres 1kw	L202, T:-
(175)	Back Diag.	MSC	8	3rd Electric	8" Fres 1kw	L202, T:-
(176)	Back Diag.	MSR	11	3rd Electric	8" Fres 1kw	L202, T:-
(177)	Back Diag.	-	4	4th Electric	8" Fres 1kw	L202, T:-
(181)	Flat Front	SL	2	Balcony Rail	Source 4 26deg 575w	M-Fader, T: R7572
	Flat Front Fader	"	2a	"	M Fader	-, T:-
(182)	Flat Front	C	4	Balcony Rail	Source 4 26deg 575w	M-Fader, T: R7572
	Flat Front Fader	"	4a	"	M Fader	-, T:-
(183)	Flat Front	SR	6	Balcony Rail	Source 4 26deg 575w	M-Fader, T: R7572
	Flat Front Fader	"	6a	"	M Fader	-, T:-
(184)	Flat Front	SL	9	Balcony Rail	Source 4 26deg 575w	M-Fader, T: R7572
	Flat Front Fader	"	9a	"	M Fader	-, T:-

Channel	Purpose	Focus	Unit	Position	Type & Watts	Color & Tmp
(185)	Flat Front	C	11	Balcony Rail	Source 4 26deg 575w	M-Fader, T: R7572
	Flat Front Fader	"	11a	"	M Fader	-, T:-
(186)	Flat Front	SR	14	Balcony Rail	Source 4 26deg 575w	M-Fader, T: R7572
	Flat Front Fader	"	14a	"	M Fader	-, T:-
(191)	Head High	Lane 1	1	SL Balc. Box #1	Source 4 36deg 575w	M-Fader, T: R7572
	"	"	1a	"	M Fader	-, T:-
(192)	Head High	Lane 2	6	SL Slot	Source 4 26deg 575w	M-Fader, T: R7572
	"	"	6a	"	M Fader	-, T:-
(193)	Head High	Lane 3	1	SL Boom #1	Source 4 26deg 575w	M-Fader, T: R7572
	"	"	1a	"	M Fader	-, T:-
(194)	Head High	Lane 4	2	SL Ladder 1	Source 4 26deg 575w	M-Fader, T: R7572
	Head High Fader	"	2a	"	M Fader	-, T:-
(195)	Head High	Lane 5	2	SL Ladder 3	Source 4 26deg 575w	M-Fader, T: R7572
	Head High Fader	"	2a	"	M Fader	-, T:-
(196)	Head High	Lane 6	3	SL Ladder 4	Source 4 26deg 575w	M-Fader, T: R7572
	Head High Fader	"	3a	"	M Fader	-, T:-
(197)	Head High	Lane 1	1	SR Balc. Box #1	Source 4 36deg 575w	M-Fader, T: R7572
	"	"	1a	"	M Fader	-, T:-
(198)	Head High	Lane 2	7	SR Slot	Source 4 26deg 575w	M-Fader, T: R7572
	"	"	7a	"	M Fader	-, T:-
(199)	Head High	Lane 3	1	SR Boom #1	Source 4 26deg 575w	M-Fader, T: R7572
	"	"	1a	"	M Fader	-, T:-
(200)	Head High	Lane 4	2	SR Ladder 1	Source 4 26deg 575w	M-Fader, T: R7572
	Head High Fader	"	2a	"	M Fader	-, T:-
(201)	Head High	Lane 5	1	SR Ladder 3	Source 4 26deg 575w	M-Fader, T: R7572
	Head High Fader	"	1a	"	M Fader	-, T:-

Channel	Purpose	Focus	Unit	Position	Type & Watts	Color & Tmp
(202)	Head High	Lane 6	2	SR Ladder 4	Source 4 26deg 575w	M-Fader, T: R7572
	Head High Fader	"	2a	"	M Fader	-, T:-
(203)	Back Wall slash	US	1	SL Ladder 4	Source 4 36deg 575w	M-Fader, T: R77107
	"	"	1a	"	M Fader	-, T:-
(204)	Back Wall slash	US	1	SR Ladder 4	Source 4 36deg 575w	M-Fader, T: R77107
	"	"	1a	"	M Fader	-, T:-
(210)	Massage Table	SL Table	10	CAT. #1 Low	S4 PAR NSP 575w	N/C, T:-
(211)	Massage Table	SR Table	14	CAT. #1 Low	S4 PAR NSP 575w	N/C, T:-
(213)	Jail	Jail Diag.	3	SL Balc. Box #2	Source 4 26deg 750w	R87, T:-
(216)	Trial	US Door	8	Balcony Rail	Source 4 19deg 750w	N/C, T:-
(217)	Trial	HL Box	6	CAT. #2 Low	Source 4 36deg 750w	R53, T:-
(218)	Trial	HR Box Flat Front	6	SR Slot	Source 4 19deg 750w	L201, T:-
(221)	Wall Split	Center	5	6th Electric	8" Fres 1kw	N/C, T:-
(222)	Wall Split	SR	2	6th Electric	8" Fres 1kw	N/C, T:-
	"	SL	6	"	"	"
(223)	Haze	US	16	Deck Mount	Unique Hazer	-, T:-
(224)	Haze Fan	US	16	Deck Mount	Unique Hazer	-, T:-
(226)	Down Spc.	Herm. Box	16	2nd Electric	S4 PAR VNSP 575w	N/C, T:-
(227)	Mamilius Front	Lower Aisle	8	CAT. #2 High	Source 4 19deg 750w	R54, T:-
(228)	Mamilius Special	DSR	17	CAT. #2 Low	Source 4 19deg 750w	L202, T:-
(229)	Mamilius Special	DC	14	2nd Electric	Source 4 19deg 750w	L202, T:-
(231)	Special	Bear US	7	6th Electric	8" Fres 1kw	R318, T:-
(232)	Special	DSR Bear	1	SL Ladder 3	Source 4 26deg 750w	R318, T:-
(233)	Special	Boat US	4	6th Electric	Source 4 50deg 575w	L200, T:-
(235)	Water Bounce	Hermio ne Ghost	9	6th Electric	Source 4 10deg 575w	L200, T:-

Channel	Purpose	Focus	Unit	Position	Type & Watts	Color & Tmp
(236)	strobe	-	1	6th Electric	AF1000 1650w	-, T:-
(238)	strobe	-	8	6th Electric	AF1000 1650w	-, T:-
(240)	Herm. Down	Boat	3	6th Electric	Source 4 19deg 750w	L200, T:-
(241)	Clock	Clock	1	Balcony Rail	Source 4 19deg 750w	R68, T:-
(242)	Clock	Clock	13	Balcony Rail	Source 4 19deg 750w	N/C, T:-
(243)	Pendulum	-	7	Set Mount	Ropelight 20w	-, T:-
(244)	Sun Clock	-	8	Set Mount	Ropelight 20w	-, T:-
(245)	Wheat	DS	2	Deck Mount	S4 PAR WFL 575w	R321, T:-
(246)	Wheat	MS	8	Deck Mount	S4 PAR WFL 575w	R321, T:-
(247)	Wheat	US	5	Deck Mount	S4 PAR WFL 575w	R321, T:-
(248)	Clock Reveal	Clock	1	SL Ladder 2	Source 4 26deg 750w	L201, T:-
(251)	Water Texture	US Door	7	Balcony Rail	Source 4 19deg 750w	N/C, T:Cloud 12
(252)	Water Text.	-	7a	Balcony Rail	Rotator	-, T:R77572 + R33609
(255)	Mamilius Special	Off SL	1	SR Tech Box #1 Low	Source 4 36deg 575w	R355
(257)	Trial Back	Y	15	3rd Electric	Source 4 36deg 750w	L202, T:-
(258)	Trial Back	BB	10	4th Electric	Source 4 36deg 575w	L202, T:-
(261)	Moat Down	HL Box	4	CAT. #2 Low	Source 4 36deg 750w	R355, T:-
(262)	Moat Down	HL Box	11	CAT. #2 Low	Source 4 36deg 750w	R355, T:-
(263)	Moat Down	HL Box	15	CAT. #2 Low	Source 4 36deg 750w	R355, T:-
(265)	Portal Slash	-	5	2nd Electric	Source 4 50deg 575w	R355, T:-
(266)	Portal Slash	-	22	2nd Electric	Source 4 50deg 575w	-, T:-
(267)	Portal Slash	-	6	3rd Electric	Source 4 50deg 575w	-, T:-
(268)	Portal Slash	-	21	3rd Electric	Source 4 50deg 575w	-, T:-
(271)	Portal Facing	DSL Leg Lower	1	SR Balc. Box #2	Source 4 26deg 750w	R364, T:G629
	"	DSL Leg Upper	2	"	"	"

Channel	Purpose	Focus	Unit	Position	Type & Watts	Color & Tmp
(272)	Portal Facing	DSL Leg Lower	1	SL Balc. Box #2	Source 4 26deg 750w	R364, T:G629
	"	DSL Leg Upper	2	"	"	"
(273)	Portal Facing	Portal 1 Xing Center	2	SL Balc. Box #1	Source 4 26deg 750w	R364, T:G629
	"	"	"	SR Balc. Box #1	"	"
(274)	Portal Facing	Portal 2 SL Leg	3	SR Balc. Box #1	Source 4 26deg 750w	R364, T:G629
(275)	Portal Facing	Portal 2 SL Leg	3	SL Balc. Box #1	Source 4 26deg 750w	R364, T:G629
(276)	Portal Facing	Portal 2 Xing Center	1	SL Ladder 1	Source 4 26deg 750w	R364, T:G629
	"	"	"	SR Ladder 1	"	"
(277)	Portal Facing	Portal 3 Leg	4	SL Balc. Box #1	Source 4 26deg 750w	R364, T:G629
(278)	Portal Facing	Portal 3 Leg	4	SR Balc. Box #1	Source 4 26deg 750w	R364, T:G629
(279)	Portal Facing	Portal 3 Xing Center	2	SL Ladder 2	Source 4 26deg 750w	R364, T:G629
	"	"	1	SR Ladder 2	"	"
(283)	Portal Slash	Portal 1	1	Deck Mount	S4 PAR VN5P 575w	N/C, T:-
(284)	Portal Slash	Portal 1	6	Deck Mount	S4 PAR VN5P 575w	N/C, T:-
(285)	Portal Slash	Portal 2	3	Deck Mount	S4 PAR VN5P 575w	N/C, T:-
(286)	Portal Slash	Portal 2	7	Deck Mount	S4 PAR VN5P 575w	N/C, T:-
(287)	Portal Slash	Portal 2	4	Deck Mount	S4 PAR VN5P 575w	N/C, T:-
(288)	Portal Slash	Portal 3	9	Deck Mount	S4 PAR VN5P 575w	N/C, T:-
(291)	Color Wash	US Wall	A1	5th Electric	Altman Zip Strip Cell 750w	R359, T:-
	"	"	B1	"	"	"
(292)	Color Wash	US Wall	C1	5th Electric	Altman Zip Strip Cell 750w	R359, T:-
(293)	Color Wash	US Wall	D1	5th Electric	Altman Zip Strip Cell 750w	R359, T:-
	"	"	E1	"	"	"

Channel	Purpose	Focus	Unit	Position	Type & Watts	Color & Tmp
(294)	Color Wash	US Wall	A2	5th Electric	Altman Zip Strip Cell 750w	N/C, T:-
	"	"	B2	"	"	"
(295)	Color Wash	US Wall	C2	5th Electric	Altman Zip Strip Cell 750w	N/C, T:-
(296)	Color Wash	US Wall	D2	5th Electric	Altman Zip Strip Cell 750w	N/C, T:-
	"	"	E2	"	"	"
(297)	Color Wash	US Wall	A3	5th Electric	Altman Zip Strip Cell 750w	R365, T:-
	"	"	B3	"	"	"
(298)	Color Wash	US Wall	C3	5th Electric	Altman Zip Strip Cell 750w	R365, T:-
(299)	Color Wash	US Wall	D3	5th Electric	Altman Zip Strip Cell 750w	R365, T:-
	"	"	E3	"	"	"
(301)	Back Wall Slash -		1	5th Electric	Source 4 50deg 750w	N/C, T:-
(302)	Back Wall Slash -		2	5th Electric	Source 4 50deg 750w	N/C, T:-
(303)	Back Wall Slash -		3	5th Electric	Source 4 50deg 750w	N/C, T:-
(304)	Back Wall Slash -		4	5th Electric	Source 4 50deg 750w	N/C, T:-
(311)	Bohemia slash	US	2	SR Ladder 4	Source 4 36deg 575w	M-Fader, T: R77107
	"	Lane 6	2a	"	M Fader	-, T:-
(312)	Bohemia slash	US	2	SR Ladder 4	Source 4 36deg 575w	M-Fader, T: R77107
	"	Lane 6	2a	"	M Fader	-, T:-
(321)	Prosc. Treat.	SL Leg Lower	10	Balcony Rail	Source 4 26deg 750w	R355, T:R8023
(322)	Prosc. Treat.	SL Leg Upper	12	Balcony Rail	Source 4 26deg 750w	R355, T:R8023
(323)	Prosc. Treat.	SR Leg Lower	5	Balcony Rail	Source 4 26deg 750w	R355, T:R8023
(324)	Prosc. Treat.	SR Leg Upper	3	Balcony Rail	Source 4 26deg 750w	R355, T:R8023
(325)	Prosc. Treat.	Xing Center	3	SR Balc. Box #2	Source 4 26deg 750w	R355, T:R8023
(326)	Prosc. Treat.	Xing Center	4	SL Balc. Box #2	Source 4 26deg 750w	R355, T:R8023
(331)	Aisle Light	Upper Aisle	7	CAT. #3 Low	Source 4 19deg 750w	R364, T:-
(332)	Aisle Light	Lower Aisle	4	CAT. #2 High	Source 4 19deg 750w	R364, T:-

Channel	Purpose	Focus	Unit	Position	Type & Watts	Color & Tmp
(333)	Stair Special	SL Stairs	1	CAT. #1 Low	Source 4 26deg 750w	R364, T:-
(334)	Aisle Light	Upper Aisle	10	CAT. #3 Low	Source 4 19deg 750w	R364, T:-
(335)	Aisle Light	Lower Aisle	7	CAT. #2 High	Source 4 19deg 750w	R364, T:-
(336)	Stair Special	SR Stairs	24	CAT. #1 Low	Source 4 26deg 750w	R364, T:-
(341)	Cyc Wash	-	A1	Cyc Electric	3 Cell Sky Cyc Left 1kw	R365, T:-
	"	"	B1	"	"	"
	"	"	C1	"	"	"
	"	"	D1	"	"	"
	"	"	E1	"	"	"
	"	"	F1	"	"	"
	"	"	G1	"	"	"
	"	"	H1	"	"	"
	"	"	I1	"	"	"
(342)	Cyc Wash	-	A2	Cyc Electric	3 Cell Sky Cyc Center 1kw	L202, T:-
	"	"	B2	"	"	"
	"	"	C2	"	"	"
	"	"	D2	"	"	"
	"	"	E2	"	"	"
	"	"	F2	"	"	"
	"	"	G2	"	"	"
	"	"	H2	"	"	"
	"	"	I2	"	"	"
(343)	Cyc Wash	-	A3	Cyc Electric	3 Cell Sky Cyc Right 1kw	R80, T:-
	"	"	B3	"	"	"
	"	"	C3	"	"	"
	"	"	D3	"	"	"
	"	"	E3	"	"	"
	"	"	F3	"	"	"
	"	"	G3	"	"	"
	"	"	H3	"	"	"
	"	"	I3	"	"	"
(351)	Cyc Wash	-	A1	Trough	3 Cell Sky Cyc Left 1kw	R316, T:-
	"	"	C1	"	"	"
	"	"	D1	"	"	"
(352)	Cyc Wash	-	E1	Trough	3 Cell Sky Cyc Left 1kw	R316, T:-
	"	"	F1	"	"	"
	"	"	G1	"	"	"

Channel	Purpose	Focus	Unit	Position	Type & Watts	Color & Tmp
(353)	Cyc Wash	-	H1	Trough	3 Cell Sky Cyc Left 1kw	R316, T:-
	"	"	I1	"	"	"
	"	"	J1	"	"	"
(354)	Cyc Wash	-	A2	Trough	3 Cell Sky Cyc Center 1kw	R80, T:-
	"	"	C2	"	"	"
	"	"	D2	"	"	"
(355)	Cyc Wash	-	E2	Trough	3 Cell Sky Cyc Center 1kw	R80, T:-
	"	"	F2	"	"	"
	"	"	G2	"	"	"
(356)	Cyc Wash	-	H2	Trough	3 Cell Sky Cyc Center 1kw	R80, T:-
	"	"	I2	"	"	"
	"	"	J2	"	"	"
(357)	Cyc Wash	-	B1	Trough	3 Cell Sky Cyc Right 1kw	R32, T:-
	"	"	C3	"	"	"
	"	"	D3	"	"	"
(358)	Cyc Wash	-	E3	Trough	3 Cell Sky Cyc Right 1kw	R32, T:-
	"	"	F3	"	"	"
	"	"	G3	"	"	"
(359)	Cyc Wash	-	H3	Trough	3 Cell Sky Cyc Right 1kw	R32, T:-
	"	"	I3	"	"	"
	"	"	J3	"	"	"
(401)	VL special	-	4	SL Tech Box #1 High	VL 1000 1kw	-, T:-
(402)	VL special	-	10	2nd Electric	VL 1000 1kw	-, T:-
(403)	VL special	-	7	4th Electric	VL 1000 1kw	-, T:-
(404)	VL special	-	1	SR Tech Box #1	VL 1000 1kw	-, T:-
(405)	VL special	-	19	2nd Electric	VL 1000 1kw	-, T:-
(406)	VL special	-	12	4th Electric	VL 1000 1kw	-, T:-
(411)	VL special	-	10	3rd Electric	VL 2500 700w	-, T:-
(412)	VL special	-	18	3rd Electric	VL 2500 700w	-, T:-

Items WITHOUT Channel

Channel	Purpose	Focus	Unit	Position	Type & Watts	Color & Tmp
-	-	-		CAT. #4 HL	StarkLite Long Lens 1200w	-, T:-
	"	"		CAT. #4 HR	*	*

INSTRUMENT SCHEDULE

The Winter's Tale

INSTRUMENT SCHEDULE

Lighting Design: Brian Engel
ALD: Andrew Dorman, Jonathan Dillard

Page 1
10 Mar 2009
Ina and Jack Kay Theatre
Department of Theatre
University of Maryland

CAT. #4 HL

U#	Purpose	Color	Template	Chn	Focus	Type & Watts
-	-	-	-	-	-	StarkLite Long Lens 1200w

CAT. #4 HR

U#	Purpose	Color	Template	Chn	Focus	Type & Watts
-	-	-	-	-	-	StarkLite Long Lens 1200w

CAT. #3 Low

U#	Purpose	Color	Template	Chn	Focus	Type & Watts
1	Front	R54	-	(6)	F	Source 4 10deg 750w
2	Front	R54	-	(1)	A	Source 4 10deg 750w
3	Front	R54	-	(7)	G	Source 4 10deg 750w
4	Front	R54	-	(2)	B	Source 4 10deg 750w
5	Front	R54	-	(8)	H	Source 4 10deg 750w
6	Front	R54	-	(3)	C	Source 4 10deg 750w
7	Aisle Light	R364	-	(331)	Upper Aisle	Source 4 19deg 750w
8	Front	R54	-	(9)	J	Source 4 10deg 750w
9	Front	R54	-	(4)	D	Source 4 10deg 750w
10	Aisle Light	R364	-	(334)	Upper Aisle	Source 4 19deg 750w
11	Front	R54	-	(10)	K	Source 4 10deg 750w
12	Front	R54	-	(5)	E	Source 4 10deg 750w

CAT. #2 High

U#	Purpose	Color	Template	Chn	Focus	Type & Watts
1	Front	R54	-	(11)	L	Source 4 19deg 750w
2	Front	R54	-	(12)	M	Source 4 19deg 750w
3	Front	R54	-	(13)	N	Source 4 19deg 750w
4	Aisle Light	R364	-	(332)	Lower Aisle	Source 4 19deg 750w
5	Front	R54	-	(14)	O	Source 4 19deg 750w
6	Front	R54	-	(15)	P	Source 4 19deg 750w
7	Aisle Light	R364	-	(335)	Lower Aisle	Source 4 19deg 750w
8	Mamilius Front	R54	-	(227)	Lower Aisle	Source 4 19deg 750w

CAT. #2 Low

U# Purpose	Color	Template	Chn Focus	Type & Watts
1 Front	R54	-	(16) Q	Source 4 10deg 750w
2 Front	R54	-	(17) R	Source 4 10deg 750w
3 Moat Down	R355	-	(261) HL Box	Source 4 36deg 750w
4 Front	R54	-	(18) S	Source 4 10deg 750w
5 Trial	R53	-	(217) HL Box	Source 4 36deg 750w
6 Top	R361	-	(31) A	Source 4 19deg 750w
7 Front	R54	-	(19) T	Source 4 10deg 750w
8 Top	R361	-	(36) F	Source 4 19deg 750w
9 Top	R361	-	(32) B	Source 4 19deg 750w
10 Moat Down	R355	-	(262) HL Box	Source 4 36deg 750w
11 Front	R54	-	(20) U	Source 4 10deg 750w
12 Top	R361	-	(37) G	Source 4 19deg 750w
13 Top	R361	-	(33) C	Source 4 19deg 750w
14 Moat Down	R355	-	(263) HL Box	Source 4 36deg 750w
15 Top	R361	-	(38) H	Source 4 19deg 750w
16 Mamilius Special	L202	-	(228) DSR	Source 4 19deg 750w
17 Top	R361	-	(34) D	Source 4 19deg 750w
18 Top	R361	-	(39) J	Source 4 19deg 750w
19 Top	R361	-	(35) E	Source 4 19deg 750w
20 Top	R361	-	(40) K	Source 4 19deg 750w

CAT. #1 High

U# Purpose	Color	Template	Chn Focus	Type & Watts
1 Front	R54	-	(21) W	Source 4 19deg 750w
2 Top	R361	-	(41) L	Source 4 26deg 750w
3 Top	R361	-	(46) Q	Source 4 19deg 575w
4 Top	R361	-	(42) M	Source 4 26deg 750w
5 Top	R361	-	(47) R	Source 4 19deg 575w
6 Top	R361	-	(43) N	Source 4 26deg 750w
7 Top	R361	-	(48) S	Source 4 19deg 575w
8 Top	R361	-	(49) T	Source 4 19deg 575w
9 Top	R361	-	(50) U	Source 4 19deg 575w

CAT. #1 Low

U#	Purpose	Color	Template	Chn	Focus	Type & Watts
1	Stair Special	R364	-	(333)	SL Stairs	Source 4 26deg 750w
2	SL High Side	R355	G697	(96)	Z-6	Source 4 26deg 750w
3	SL High Side	R355	G697	(93)	Z-3	Source 4 26deg 750w
4	Front	R54	-	(22)	X	Source 4 19deg 750w
5	Down	R364	-	(61)	A	Source 4 26deg 750w
6	Down	R364	-	(66)	F	Source 4 26deg 750w
7	Down	R364	-	(62)	B	Source 4 26deg 750w
8	Front	R54	-	(23)	Y	Source 4 19deg 750w
9	Down	R364	-	(67)	G	Source 4 26deg 750w
10	Massage Table	N/C	-	(210)	SL Table	S4 PAR NSP 575w
11	Front	R54	-	(24)	Z	Source 4 19deg 750w
12	Down	R364	-	(68)	H	Source 4 26deg 750w
13	Down	R364	-	(63)	C	Source 4 26deg 750w
14	Massage Table	N/C	-	(211)	SR Table	S4 PAR NSP 575w
15	Front	R54	-	(25)	AA	Source 4 19deg 750w
16	Down	R364	-	(69)	J	Source 4 26deg 750w
17	Down	R364	-	(64)	D	Source 4 26deg 750w
18	Top	R361	-	(44)	O	Source 4 26deg 750w
19	Down	R364	-	(70)	K	Source 4 26deg 750w
20	Down	R364	-	(65)	E	Source 4 26deg 750w
21	SR High Side	R355	G697	(111)	Z-1	Source 4 26deg 750w
22	Top	R361	-	(45)	P	Source 4 26deg 750w
23	SR High Side	R355	G697	(114)	Z-4	Source 4 26deg 750w
24	Stair Special	R364	-	(336)	SR Stairs	Source 4 26deg 750w

Balcony Rail

U#	Purpose	Color	Template	Chn	Focus	Type & Watts
1	Clock	R68	-	(241)	Clock	Source 4 19deg 750w
2	Flat Front	M-Fader	R7572	(181)	SL	Source 4 26deg 575w
2a	Flat Front Fader	-	-	(181)	SL	M Fader
3	Prosc. Treat.	R355	R8023	(324)	SR Leg Upper	Source 4 26deg 750w
4	Flat Front	M-Fader	R7572	(182)	C	Source 4 26deg 575w
4a	Flat Front Fader	-	-	(182)	C	M Fader
5	Prosc. Treat.	R355	R8023	(323)	SR Leg Lower	Source 4 26deg 750w
6	Flat Front	M-Fader	R7572	(183)	SR	Source 4 26deg 575w
6a	Flat Front Fader	-	-	(183)	SR	M Fader
7	Water Texture	N/C	Cloud 12	(251)	US Door	Source 4 19deg 750w
7a	Water Text.	-	R77572 + R33609	(252)	-	Rotator
8	Trial	N/C	-	(216)	US Door	Source 4 19deg 750w
9	Flat Front	M-Fader	R7572	(184)	SL	Source 4 26deg 575w
9a	Flat Front Fader	-	-	(184)	SL	M Fader
10	Prosc. Treat.	R355	R8023	(321)	SL Leg Lower	Source 4 26deg 750w
11	Flat Front	M-Fader	R7572	(185)	C	Source 4 26deg 575w
11a	Flat Front Fader	-	-	(185)	C	M Fader
12	Prosc. Treat.	R355	R8023	(322)	SL Leg Upper	Source 4 26deg 750w
13	Clock	N/C	-	(242)	Clock	Source 4 19deg 750w
14	Flat Front	M-Fader	R7572	(186)	SR	Source 4 26deg 575w
14a	Flat Front Fader	-	-	(186)	SR	M Fader

1st Electric

U#	Purpose	Color	Template	Chn	Focus	Type & Watts
2	Down	R364	-	(71)	L	Source 4 36deg 750w
3	Top	R361	-	(51)	W	Source 4 36deg 750w
4	Down	R364	-	(72)	M	Source 4 36deg 750w
5	Front	R54	-	(26)	BB	Source 4 36deg 750w
6	Top	R361	-	(52)	X	Source 4 36deg 750w
7	Down	R364	-	(73)	N	Source 4 36deg 750w
8	Top	R361	-	(53)	Y	Source 4 36deg 750w
9	Top	R361	-	(56)	BB	Source 4 36deg 750w
10	Down	R364	-	(74)	O	Source 4 36deg 750w
11	Top	R361	-	(54)	Z	Source 4 36deg 750w
12	Down	R364	-	(75)	P	Source 4 36deg 750w
13	Top	R361	-	(55)	AA	Source 4 36deg 750w

2nd Electric

U#	Purpose	Color	Template	Chn	Focus	Type & Watts
1	SL Pipe End	R08	R7732	(137)	Z-7	Source 4 36deg 750w
2	SL Pipe End	R08	R7732	(138)	Z-8	Source 4 26deg 750w
3	SL High Side	R355	G697	(97)	Z-7	Source 4 36deg 575w
4	SL Pipe End	R08	R7732	(139)	Z-9	Source 4 19deg 750w
5	Portal Slash	R355	-	(265)	-	Source 4 50deg 575w
6	Back Diag.	L202	-	(171)	DSL	8" Fres 1kw
7	SL High Side	R355	G697	(98)	Z-8	Source 4 36deg 575w
8	Back Diag.	L202	-	(172)	DSC	8" Fres 1kw
9	Down	R364	-	(76)	Q	Source 4 36deg 750w
10	VL special	-	-	(402)	-	VL 1000 1kw
11	Down	R364	-	(77)	R	Source 4 36deg 750w
12	Back Diag.	L202	-	(173)	DSR	8" Fres 1kw
13	SL High Side	R355	G697	(99)	Z-9	Source 4 36deg 575w
14	Mamilius Special	L202	-	(229)	DC	Source 4 19deg 750w
15	Down	R364	-	(78)	S	Source 4 36deg 750w
16	Down Spc.	N/C	-	(226)	Herm. Box	S4 PAR VN5P 575w
17	SR High Side	R355	G697	(117)	Z-7	Source 4 36deg 575w
18	Down	R364	-	(79)	T	Source 4 36deg 750w
19	VL special	-	-	(405)	-	VL 1000 1kw
20	Down	R364	-	(80)	U	Source 4 36deg 750w
21	SR High Side	R355	G697	(118)	Z-8	Source 4 36deg 575w
22	Portal Slash	-	-	(266)	-	Source 4 50deg 575w
23	SR Pipe End	R08	R7732	(157)	Z-7	Source 4 19deg 750w
24	SR High Side	R355	G697	(119)	Z-9	Source 4 36deg 575w
25	SR Pipe End	R08	R7732	(158)	Z-8	Source 4 26deg 750w
26	SR Pipe End	R08	R7732	(159)	Z-9	Source 4 36deg 750w

3rd Electric

U#	Purpose	Color	Template	Chn	Focus	Type & Watts
1	SL Pipe End	R08	R7732	(140)	Z-10	Source 4 36deg 750w
2	SL Pipe End	R08	R7732	(141)	Z-11	Source 4 26deg 750w
3	SL Pipe End	R08	R7732	(142)	Z-12	Source 4 26deg 750w
4	SL High Side	R355	G697	(100)	Z-10	Source 4 36deg 750w
5	Back Diag.	L202	-	(174)	MSL	8" Fres 1kw
6	Portal Slash	-	-	(267)	-	Source 4 50deg 575w
7	SL High Side	R355	G697	(101)	Z-11	Source 4 36deg 750w
8	Back Diag.	L202	-	(175)	MSC	8" Fres 1kw
9	Down	R364	-	(81)	W	Source 4 36deg 750w
10	VL special	-	-	(411)	-	VL 2500 700w
11	Back Diag.	L202	-	(176)	MSR	8" Fres 1kw
12	Down	R364	-	(82)	X	Source 4 36deg 750w
13	SL High Side	R355	G697	(102)	Z-12	Source 4 36deg 750w
14	Down	R364	-	(83)	Y	Source 4 36deg 750w
15	Trial Back	L202	-	(257)	Y	Source 4 36deg 750w
16	SR High Side	R355	G697	(120)	Z-10	Source 4 36deg 750w
17	Down	R364	-	(84)	Z	Source 4 36deg 750w
18	VL special	-	-	(412)	-	VL 2500 700w
19	Down	R364	-	(85)	AA	Source 4 36deg 750w
20	SR High Side	R355	G697	(121)	Z-11	Source 4 36deg 750w
21	Portal Slash	-	-	(268)	-	Source 4 50deg 575w
22	SR High Side	R355	G697	(122)	Z-12	Source 4 36deg 750w
23	SR Pipe End	R08	R7732	(160)	Z-10	Source 4 26deg 750w
24	SR Pipe End	R08	R7732	(161)	Z-11	Source 4 26deg 750w
25	SR Pipe End	R08	R7732	(162)	Z-12	Source 4 36deg 750w

4th Electric

U#	Purpose	Color	Template	Chn	Focus	Type & Watts
1	SL Pipe End	R08	R7732	(143)	Z-13	Source 4 36deg 750w
2	SL Pipe End	R08	R7732	(144)	Z-14	Source 4 26deg 750w
3	SL Pipe End	R08	R7732	(145)	Z-15	Source 4 26deg 750w
4	Back Diag.	L202	-	(177)	-	8" Fres 1kw
5	SL High Side	R355	G697	(103)	Z-13	Source 4 36deg 750w
6	SL High Side	R355	G697	(104)	Z-14	Source 4 36deg 750w
7	VL special	-	-	(403)	-	VL 1000 1kw
8	SL High Side	R355	G697	(105)	Z-15	Source 4 36deg 750w
9	Down	R364	-	(86)	BB	Source 4 50deg 750w
10	Trial Back	L202	-	(258)	BB	Source 4 36deg 575w
11	SR High Side	R355	G697	(123)	Z-13	Source 4 36deg 750w
12	VL special	-	-	(406)	-	VL 1000 1kw
13	SR High Side	R355	G697	(124)	Z-14	Source 4 36deg 750w
14	SR High Side	R355	G697	(125)	Z-15	Source 4 36deg 750w
15	SR Pipe End	R08	R7732	(163)	Z-13	Source 4 26deg 750w
16	SR Pipe End	R08	R7732	(164)	Z-14	Source 4 26deg 750w
17	SR Pipe End	R08	R7732	(165)	Z-15	Source 4 36deg 750w

5th Electric

U#	Purpose	Color	Template	Chn	Focus	Type & Watts
1	Back Wall Slash	N/C	-	(301)	-	Source 4 50deg 750w
2	Back Wall Slash	N/C	-	(302)	-	Source 4 50deg 750w
3	Back Wall Slash	N/C	-	(303)	-	Source 4 50deg 750w
4	Back Wall Slash	N/C	-	(304)	-	Source 4 50deg 750w
A1	Color Wash	R359	-	(291)	US Wall	Altman Zip Strip Cell 750w
A2	Color Wash	N/C	-	(294)	US Wall	Altman Zip Strip Cell 750w
A3	Color Wash	R365	-	(297)	US Wall	Altman Zip Strip Cell 750w
B1	Color Wash	R359	-	(291)	US Wall	Altman Zip Strip Cell 750w
B2	Color Wash	N/C	-	(294)	US Wall	Altman Zip Strip Cell 750w
B3	Color Wash	R365	-	(297)	US Wall	Altman Zip Strip Cell 750w
C1	Color Wash	R359	-	(292)	US Wall	Altman Zip Strip Cell 750w
C2	Color Wash	N/C	-	(295)	US Wall	Altman Zip Strip Cell 750w
C3	Color Wash	R365	-	(298)	US Wall	Altman Zip Strip Cell 750w
D1	Color Wash	R359	-	(293)	US Wall	Altman Zip Strip Cell 750w
D2	Color Wash	N/C	-	(296)	US Wall	Altman Zip Strip Cell 750w
D3	Color Wash	R365	-	(299)	US Wall	Altman Zip Strip Cell 750w
E1	Color Wash	R359	-	(293)	US Wall	Altman Zip Strip Cell 750w
E2	Color Wash	N/C	-	(296)	US Wall	Altman Zip Strip Cell 750w
E3	Color Wash	R365	-	(299)	US Wall	Altman Zip Strip Cell 750w

6th Electric

U#	Purpose	Color	Template	Chn	Focus	Type & Watts
1	strobe	-	-	(236)	-	AF1000 1650w
2	Wall Split	N/C	-	(222)	SR	8" Fres 1kw
3	Herm. Down	L200	-	(240)	Boat	Source 4 19deg 750w
4	Special	L200	-	(233)	Boat US	Source 4 50deg 575w
5	Wall Split	N/C	-	(221)	Center	8" Fres 1kw
6	Wall Split	N/C	-	(222)	SL	8" Fres 1kw
7	Special	R318	-	(231)	Bear US	8" Fres 1kw
8	strobe	-	-	(238)	-	AF1000 1650w
9	Water Bounce	L200	-	(235)	Hermione Ghost	Source 4 10deg 575w

Cyc Electric

U#	Purpose	Color	Template	Chn	Focus	Type & Watts
A1	Cyc Wash	R365	-	(341)	-	3 Cell Sky Cyc Left 1kw
A2	Cyc Wash	L202	-	(342)	-	3 Cell Sky Cyc Center 1kw
A3	Cyc Wash	R80	-	(343)	-	3 Cell Sky Cyc Right 1kw
B1	Cyc Wash	R365	-	(341)	-	3 Cell Sky Cyc Left 1kw
B2	Cyc Wash	L202	-	(342)	-	3 Cell Sky Cyc Center 1kw
B3	Cyc Wash	R80	-	(343)	-	3 Cell Sky Cyc Right 1kw
C1	Cyc Wash	R365	-	(341)	-	3 Cell Sky Cyc Left 1kw
C2	Cyc Wash	L202	-	(342)	-	3 Cell Sky Cyc Center 1kw
C3	Cyc Wash	R80	-	(343)	-	3 Cell Sky Cyc Right 1kw
D1	Cyc Wash	R365	-	(341)	-	3 Cell Sky Cyc Left 1kw
D2	Cyc Wash	L202	-	(342)	-	3 Cell Sky Cyc Center 1kw
D3	Cyc Wash	R80	-	(343)	-	3 Cell Sky Cyc Right 1kw
E1	Cyc Wash	R365	-	(341)	-	3 Cell Sky Cyc Left 1kw
E2	Cyc Wash	L202	-	(342)	-	3 Cell Sky Cyc Center 1kw
E3	Cyc Wash	R80	-	(343)	-	3 Cell Sky Cyc Right 1kw
F1	Cyc Wash	R365	-	(341)	-	3 Cell Sky Cyc Left 1kw
F2	Cyc Wash	L202	-	(342)	-	3 Cell Sky Cyc Center 1kw
F3	Cyc Wash	R80	-	(343)	-	3 Cell Sky Cyc Right 1kw
G1	Cyc Wash	R365	-	(341)	-	3 Cell Sky Cyc Left 1kw
G2	Cyc Wash	L202	-	(342)	-	3 Cell Sky Cyc Center 1kw
G3	Cyc Wash	R80	-	(343)	-	3 Cell Sky Cyc Right 1kw
H1	Cyc Wash	R365	-	(341)	-	3 Cell Sky Cyc Left 1kw
H2	Cyc Wash	L202	-	(342)	-	3 Cell Sky Cyc Center 1kw
H3	Cyc Wash	R80	-	(343)	-	3 Cell Sky Cyc Right 1kw
I1	Cyc Wash	R365	-	(341)	-	3 Cell Sky Cyc Left 1kw
I2	Cyc Wash	L202	-	(342)	-	3 Cell Sky Cyc Center 1kw
I3	Cyc Wash	R80	-	(343)	-	3 Cell Sky Cyc Right 1kw

SL Tech Box #1 High

U#	Purpose	Color	Template	Chn	Focus	Type & Watts
1	SL Pipe End	R08	R7732	(133)	Z-3	Source 4 19deg 575w
2	SL Pipe End	R08	R7732	(132)	Z-2	Source 4 26deg 750w
3	SL High Side	R355	G697	(92)	Z-2	Source 4 26deg 750w
4	VL special	-	-	(401)	-	VL 1000 1kw

SL Tech Box #1 Low

U#	Purpose	Color	Template	Chn	Focus	Type & Watts
1	SL Pipe End	R08	R7732	(131)	Z-1	Source 4 36deg 750w
2	SL High Side	R355	G697	(91)	Z-1	Source 4 36deg 750w

SL Balc. Box #1

U#	Purpose	Color	Template	Chn	Focus	Type & Watts
1	Head High	M-Fader	R7572	(191)	Lane 1	Source 4 36deg 575w
1a	Head High	-	-	(191)	Lane 1	M Fader
2	Portal Facing	R364	G629	(273)	Portal 1 Xing Center	Source 4 26deg 750w
3	Portal Facing	R364	G629	(275)	Portal 2 SL Leg	Source 4 26deg 750w
4	Portal Facing	R364	G629	(277)	Portal 3 Leg	Source 4 26deg 750w

SL Balc. Box #2

U#	Purpose	Color	Template	Chn	Focus	Type & Watts
1	Portal Facing	R364	G629	(272)	DSL Leg Lower	Source 4 26deg 750w
2	Portal Facing	R364	G629	(272)	DSL Leg Upper	Source 4 26deg 750w
3	Jail	R87	-	(213)	Jail Diag.	Source 4 26deg 750w
4	Prosc. Treat.	R355	R8023	(326)	Xing Center	Source 4 26deg 750w

SL Slot

U#	Purpose	Color	Template	Chn	Focus	Type & Watts
1	SL Pipe End	R08	R7732	(136)	Z-6	Source 4 19deg 750w
2	SL High Side	R355	G697	(95)	Z-5	Source 4 26deg 750w
3	SL Pipe End	R08	R7732	(135)	Z-5	Source 4 26deg 750w
4	SL High Side	R355	G697	(94)	Z-4	Source 4 26deg 750w
5	SL Pipe End	R08	R7732	(134)	Z-4	Source 4 26deg 750w
6	Head High	M-Fader	R7572	(192)	Lane 2	Source 4 26deg 575w
6a	Head High	-	-	(192)	Lane 2	M Fader

SL Boom #1

U#	Purpose	Color	Template	Chn	Focus	Type & Watts
1	Head High	M-Fader	R7572	(193)	Lane 3	Source 4 26deg 575w
1a	Head High	-	-	(193)	Lane 3	M Fader

SL Ladder 1

U#	Purpose	Color	Template	Chn	Focus	Type & Watts
1	Portal Facing	R364	G629	(276)	Portal 2 Xing Center	Source 4 26deg 750w
2	Head High	M-Fader	R7572	(194)	Lane 4	Source 4 26deg 575w
2a	Head High Fader	-	-	(194)	Lane 4	M Fader

SL Ladder 2

U#	Purpose	Color	Template	Chn	Focus	Type & Watts
1	Clock Reveal	L201	-	(248)	Clock	Source 4 26deg 750w
2	Portal Facing	R364	G629	(279)	Portal 3 Xing Center	Source 4 26deg 750w

SL Ladder 3

U#	Purpose	Color	Template	Chn	Focus	Type & Watts
1	Special	R318	-	(232)	DSR Bear	Source 4 26deg 750w
2	Head High	M-Fader	R7572	(195)	Lane 5	Source 4 26deg 575w
2a	Head High Fader	-	-	(195)	Lane 5	M Fader

SL Ladder 4

U#	Purpose	Color	Template	Chn	Focus	Type & Watts
1	Back Wall slash	M-Fader	R77107	(203)	US	Source 4 36deg 575w
1a	Back Wall slash	-	-	(203)	US	M Fader
3	Head High	M-Fader	R7572	(196)	Lane 6	Source 4 26deg 575w
3a	Head High Fader	-	-	(196)	Lane 6	M Fader

SR Tech Box #1 High

U#	Purpose	Color	Template	Chn	Focus	Type & Watts
1	SR Pipe End	R08	R7732	(151)	Z-1	Source 4 19deg 575w
2	SR Pipe End	R08	R7732	(152)	Z-2	Source 4 26deg 750w
3	SR High Side	R355	G697	(112)	Z-2	Source 4 26deg 750w

SR Tech Box #1 Low

U#	Purpose	Color	Template	Chn	Focus	Type & Watts
1	Mamilius Special	R355		(255)	Off SL	Source 4 36deg 575w
2	SR Pipe End	R08	R7732	(153)	Z-3	Source 4 36deg 750w
3	SR High Side	R355	G697	(113)	Z-3	Source 4 36deg 750w

SR Tech Box #1

U#	Purpose	Color	Template	Chn	Focus	Type & Watts
1	VL special	-	-	(404)	-	VL 1000 1kw

SR Balc. Box #1

U#	Purpose	Color	Template	Chn	Focus	Type & Watts
1	Head High	M-Fader	R7572	(197)	Lane 1	Source 4 36deg 575w
1a	Head High	-	-	(197)	Lane 1	M Fader
2	Portal Facing	R364	G629	(273)	Portal 1 Xing Center	Source 4 26deg 750w
3	Portal Facing	R364	G629	(274)	Portal 2 SL Leg	Source 4 26deg 750w
4	Portal Facing	R364	G629	(278)	Portal 3 Leg	Source 4 26deg 750w

SR Balc. Box #2

U#	Purpose	Color	Template	Chn	Focus	Type & Watts
1	Portal Facing	R364	G629	(271)	DSL Leg Lower	Source 4 26deg 750w
2	Portal Facing	R364	G629	(271)	DSL Leg Upper	Source 4 26deg 750w
3	Prosc. Treat.	R355	R8023	(325)	Xing Center	Source 4 26deg 750w

SR Slot

U#	Purpose	Color	Template	Chn	Focus	Type & Watts
1	SR Pipe End	R08	R7732	(154)	Z-4	Source 4 19deg 750w
2	SR High Side	R355	G697	(115)	Z-5	Source 4 26deg 750w
3	SR Pipe End	R08	R7732	(155)	Z-5	Source 4 26deg 750w
4	SR High Side	R355	G697	(116)	Z-6	Source 4 26deg 750w
5	SR Pipe End	R08	R7732	(156)	Z-6	Source 4 26deg 750w
6	Trial	L201	-	(218)	HR Box Flat Front	Source 4 19deg 750w
7	Head High	M-Fader	R7572	(198)	Lane 2	Source 4 26deg 575w
7a	Head High	-	-	(198)	Lane 2	M Fader

SR Boom #1

U#	Purpose	Color	Template	Chn	Focus	Type & Watts
1	Head High	M-Fader	R7572	(199)	Lane 3	Source 4 26deg 575w
1a	Head High	-	-	(199)	Lane 3	M Fader

SR Ladder 1

U#	Purpose	Color	Template	Chn	Focus	Type & Watts
1	Portal Facing	R364	G629	(276)	Portal 2 Xing Center	Source 4 26deg 750w
2	Head High	M-Fader	R7572	(200)	Lane 4	Source 4 26deg 575w
2a	Head High Fader	-	-	(200)	Lane 4	M Fader

SR Ladder 2

U#	Purpose	Color	Template	Chn	Focus	Type & Watts
1	Portal Facing	R364	G629	(279)	Portal 3 Xing Center	Source 4 26deg 750w

SR Ladder 3

U#	Purpose	Color	Template	Chn	Focus	Type & Watts
1	Head High	M-Fader	R7572	(201)	Lane 5	Source 4 26deg 575w
1a	Head High Fader	-	-	(201)	Lane 5	M Fader

SR Ladder 4

U#	Purpose	Color	Template	Chn	Focus	Type & Watts
1	Back Wall slash	M-Fader	R77107	(204)	US	Source 4 36deg 575w
1a	Back Wall slash	-	-	(204)	US	M Fader
2	Head High	M-Fader	R7572	(202)	Lane 6	Source 4 26deg 575w
2	Bohemia slash	M-Fader	R77107	(312)	US	Source 4 36deg 575w
2	Bohemia slash	M-Fader	R77107	(311)	US	Source 4 36deg 575w
2a	Head High Fader	-	-	(202)	Lane 6	M Fader
2a	Bohemia slash	-	-	(311)	Lane 6	M Fader
2a	Bohemia slash	-	-	(312)	Lane 6	M Fader

Deck Mount

U#	Purpose	Color	Template	Chn	Focus	Type & Watts
1	Portal Slash	N/C	-	(283)	Portal 1	S4 PAR VN5P 575w
2	Wheat	R321	-	(245)	DS	S4 PAR WFL 575w
3	Portal Slash	N/C	-	(285)	Portal 2	S4 PAR VN5P 575w
4	Portal Slash	N/C	-	(287)	Portal 2	S4 PAR VN5P 575w
5	Wheat	R321	-	(247)	US	S4 PAR WFL 575w
6	Portal Slash	N/C	-	(284)	Portal 1	S4 PAR VN5P 575w
7	Portal Slash	N/C	-	(286)	Portal 2	S4 PAR VN5P 575w
8	Wheat	R321	-	(246)	MS	S4 PAR WFL 575w
9	Portal Slash	N/C	-	(288)	Portal 3	S4 PAR VN5P 575w
16	Haze Fan	-	-	(224)	US	Unique Hazer
16	Haze	-	-	(223)	US	Unique Hazer

Set Mount

U#	Purpose	Color	Template	Chn	Focus	Type & Watts
7	Pendulum	-	-	(243)	-	Ropelight 20w
8	Sun Clock	-	-	(244)	-	Ropelight 20w

Trough

U#	Purpose	Color	Template	Chn	Focus	Type & Watts
A1	Cyc Wash	R316	-	(351)	-	3 Cell Sky Cyc Left 1kw
A2	Cyc Wash	R80	-	(354)	-	3 Cell Sky Cyc Center 1kw
B1	Cyc Wash	R32	-	(357)	-	3 Cell Sky Cyc Right 1kw
C1	Cyc Wash	R316	-	(351)	-	3 Cell Sky Cyc Left 1kw
C2	Cyc Wash	R80	-	(354)	-	3 Cell Sky Cyc Center 1kw
C3	Cyc Wash	R32	-	(357)	-	3 Cell Sky Cyc Right 1kw
D1	Cyc Wash	R316	-	(351)	-	3 Cell Sky Cyc Left 1kw
D2	Cyc Wash	R80	-	(354)	-	3 Cell Sky Cyc Center 1kw
D3	Cyc Wash	R32	-	(357)	-	3 Cell Sky Cyc Right 1kw
E1	Cyc Wash	R316	-	(352)	-	3 Cell Sky Cyc Left 1kw
E2	Cyc Wash	R80	-	(355)	-	3 Cell Sky Cyc Center 1kw
E3	Cyc Wash	R32	-	(358)	-	3 Cell Sky Cyc Right 1kw
F1	Cyc Wash	R316	-	(352)	-	3 Cell Sky Cyc Left 1kw
F2	Cyc Wash	R80	-	(355)	-	3 Cell Sky Cyc Center 1kw
F3	Cyc Wash	R32	-	(358)	-	3 Cell Sky Cyc Right 1kw
G1	Cyc Wash	R316	-	(352)	-	3 Cell Sky Cyc Left 1kw
G2	Cyc Wash	R80	-	(355)	-	3 Cell Sky Cyc Center 1kw
G3	Cyc Wash	R32	-	(358)	-	3 Cell Sky Cyc Right 1kw
H1	Cyc Wash	R316	-	(353)	-	3 Cell Sky Cyc Left 1kw
H2	Cyc Wash	R80	-	(356)	-	3 Cell Sky Cyc Center 1kw
H3	Cyc Wash	R32	-	(359)	-	3 Cell Sky Cyc Right 1kw
I1	Cyc Wash	R316	-	(353)	-	3 Cell Sky Cyc Left 1kw
I2	Cyc Wash	R80	-	(356)	-	3 Cell Sky Cyc Center 1kw
I3	Cyc Wash	R32	-	(359)	-	3 Cell Sky Cyc Right 1kw
J1	Cyc Wash	R316	-	(353)	-	3 Cell Sky Cyc Left 1kw
J2	Cyc Wash	R80	-	(356)	-	3 Cell Sky Cyc Center 1kw
J3	Cyc Wash	R32	-	(359)	-	3 Cell Sky Cyc Right 1kw

CUE TRACK

Cue	PG #	PG # AS	Time Up	Time Dn	W	D	Action	Look	FS 1	FS 2
1	1						VL/Fader Check			
2	1		3	4			Preshow			
3	1		3	5			House ↓ 1/2			
4	1		3	5	2		House Out			
4.5	1		3	/				B.O. Get time into the house		
5	1		5	8			Time Trans Up	Time in Aisles - Mamilious DC	Up M.	
PT. 2	1		6	/						
6	1		1	/			Time finishes line	Transition into I.i	Dn M.	
9	1	4	1	2			Tables Leave	Pull to Center		
10	2	4	2	4			End of Scene	Transition to Sicilia Dance		
11	2	4	4	8			Dance	Full Stage - Emph Diags		
13	2	4	8	16			Dance	Emph Horizontal - Push Booms		
15	2	4	6	12			Bows			
18	3	5	8	16			Scene Up I.i.ii	Expand into scene		

The Winter's Tale
Cue Track

3/10/2009
2 of 11

Cue	PG #	AS	Time	W	D	Action	Look	FS 1	FS 2
21	3	7	3	5				Up. Polix.	
22	4	7	8	20		Leontes to SR stairs	SR Stairs Up		
22.5	4	7	8	20		X US	SR Up		
23	5	9	3	5		"play fellow"		Dn. Polix.	
24	5	9	3	20		"your queen and I are devils"		Up Leont.	
25	6	11	2	4		"too hot"	Pull Down to Leont. Push Back Diags	Dn. Herm.	
26	6	12	5	10		"Art thou my boy?"	Open to include Mamilius		
28	7	13	20	40		"hardening of my brows"	restore to Sicilia	Dn. Leont.	
30	8	15	8	16		"and with his varying childness"	prep SL for exit - push SL		
31	8	15	4	6		"I am angling" - anticipate	Leont. Aside and Pull Down	Up Leont.	
32	8	16	3	5		"Gone Already"	Release US exit, pull down to Leont. Push HS		
34	9	17	6	12		"how now, boy" - anticipate	Restore to Sicilia	Up Camil.	
35	9	17	40	1:20		Mamilius Exit	Sharpen the room		

The Winter's Tale
Cue Track

3/10/2009
3 of 11

Cue	PG #	AS	PG #	Time	W	D	Action	Look	FS 1	FS 2
41	12	23	10	40			"draught to me were cordial"	increase contrast		
43	12	24	20	40			Leont. Exit	add warmth back to the room		Dn. Leont.
44	13	25	8	12			Polix. Enters			Up. Polix.
47	14	29	3	30			"I do believe thee"	emotional shift - escape plan		
48	15	29	0.5	1			End of Scene	Transition	Dn. Camill.	Dn. Polix.
PT 2			0.5	/						
50	16	30	4	6			Into Scene	Nursery - Sunny in winter - Low angle push		
PT 2			3	/						
53	17	31	3	5			Move DSL	Pull down 1/4		
55	17	31	2	3			Enter Leont.		Up. Leont.	
57	18	33	2	10			"give me the boy"	Push Patts. Lowest moment		
58	18	33	20	40			anticipate herm speaking			Up Herm.
60	19	36	3	5	5		Hermione exits			Dn. Herm.
61	19	36	20	40			anticipate Antig.			Up Antig.
66	22	40	6	8			Into Jail Scene	Stark Jail Diags		Up Paul

The Winter's Tale
Cue Track

Lighting Design by: Brian Engel
ALD: Andrew Dorman, Jonathan Dillard

Cue	PG #	PG # AS	Time Up	W	D	Action	Look	FS 1	FS 2
PT. 2	22	40	8	/					
Pt. 3	22	40	6	/					
68	23	41	3	5	Emilia enters			Up Emil.	
69	24	42	3	5	Emilia Exits			Dn. Emil.	
71	24	43	1	/	End of Scene	Transition		Dn. Paul.	
PT. 2	24	43	1	2					
73	24	43	2	4	II.ii	Train station + puppets			
75	25	1	0.5	1	End of Scene	Transition			
77	25	43	3	6	II.iii	Leontes Office - Push Patts lane 3 & 4		Up Leont.	
PT 2			2	/					
78			3	5	Servant Ent.				
79	26	44	3	5	Servant Exit	Pull down to Leontes - moment of insanity			
80	26	45	3	5	Enter Paulina	Restore		Up Paul.	
83	27	46	3	5	Move to DS	Pull Focus DS			
85	27	47	10	25	Lays down the baby	Special UP			
90	29	50	40	1:20	Paulina Exits	Pull to Center		Dn. Paul.	

The Winter's Tale
Cue Track

Lighting Design by: Brian Engel
A.L.D.: Andrew Dorman, Jonathan Dillard

Cue	PG #	PG # AS	Time Up	Time Dn	W	D	Action	Look	FS 1	FS 2
94	31	52	5	10			Antigonus exit with child			Dn. Antig.
98	32	53	5	8			III.ii	Court Room	Up Leont.	
PT 2			5	/						
100	32	53	4	6			Hermione Enters	Back light flood		
101							Doors Close	Pull US out, help Doors closing		
102	32	53	20	40			Hermione Speaks - anticipate	Trial - Full Stage + HR box	Up Herm.	Dn. Offic.
104	33	57	3	5			Leont. Speaks	Direct to HL Box		
106	34		6	15			Hermione moves DSR			
108	35	61	3	5			Cleo and Dion Enter			
109			3	10			Balc Special Down			
110	35	62	3	5			Enter Servant	Push Patts - news of Mamil. Death	Dn. Herm.	
111	36	62	1	2			Hermione swoons	Draw Focus	Up Leont.	
113	36	62	8	16			Exit Paulina, ladies, Hermione	Shift to grief		
114	36	63	20	30			Paulina re-enters		Up Paul.	

The Winter's Tale
Cue Track

Lighting Design by: Brian Engel
ALD: Andrew Dorman, Jonathan Dillard

Cue	PG #	PG # AS	Time Up	W	D	Action	Look	FS 1	FS 2
115			3	20		Leont. Kneel down	lose mover		
119	38	66	1	/		End of Scene	Transition		Dn. Leont.
121	38	66	3	5		III.iii	A desert country near the sea	Up Antio.	Up Marin.
PT 2			2	/					
122	38	67	3	5		Exit Mariner			Dn. Marin.
125	39	67	0.5	/		Hermione's ghost appears	reveal hermione		
Pt 2			5	/	1				
PT 3			10	/					
127	39	68	0	/		Hermione exits			
129			0	/		Lightning			
131			0	/		Lightning			
132			1	/	4	Lightning			
PT. 2			0	/	.5				
133	39	69	0	/	12	Bear US	Lightning	Dn. Antio.	
PT 2			0	/	1				
133.5			4	8		reset movers			
137	39	69	20	40		Enter Shepard			Up Shep.
PT 2			3	/					

The Winter's Tale
Cue Track

Lighting Design by: Brian Engel
ALD: Andrew Dorman, Jonathan Dillard

Cue	PG #	AS	PG #	Time	W	D	Action	Look	FS 1	FS 2
140	40	70	6	12			Enter Clown		Up Clown	
143	41	74	1	/	5		End of Scene	B/O	Dn. Clown	Dn. Shep.
PT 2			3	/						
143.5	41	74	0	/				reset movers	Dn. Clown	Dn. Shep.
149	41	74	4	6			House Up	Intermission		
201	42	76	3	5			House to 1/2	Intermission		
202	42	76	3	5			House Out	B/O		
205	42	76	12	16			1V.i	Time + Mamilius + Haze		
PT 2			10	/	8					
206			3	5			Time Splits	Leon and Mam special		
206.5	42		4	8			Florizel X DSL			
206.6	42		3	4	2		Perdita DSR			
206.7	42		8	10			Florizel Exits			
206.8	42		3	4	3		Time Gathers around Mam.			
206.9	42		5	8						

The Winter's Tale
Cue Track

Lighting Design by: Brian Engel
ALD: Andrew Dorman, Jonathan Dillard

Cue	PG #	PG # AS	Time Up	Time Dn	W	D	Action	Look	FS 1	FS 2
207	42	77	3	5			End of Scene	Transition		
209	43	77	3	5			IV.ii	Bohemia Palace - DS only		
211	44	79	2	3			End Scene	Transition		
213	45	79	0	3	1:30		IV.iii	Shepard's Cottage - Center		
214			1	/			Autolycus enters			
215			20	/			restore			
220	48	88	3	5			Autolycus sings	Pull Down		
222	48	89	3	5			IV.iv	Angle shift.		
226	50	92	3	5			Enter Shep, Clown, et al.	Expand and advance time		
229	51	96	0	/			Perdita's song	Rock show	Up Perd.	
245	53	99	3	5			End Dance	Restore		
247	53	103	1	2	40		Enter Autolycus	sings song	Up Auto.	
248			20	/			restore			

The Winter's Tale
Cue Track

Lighting Design by: Brian Engel
A.L.D.: Andrew Dorman, Jonathan Dillard

Cue	PG #	PG # AS	Time Up	W	D	Action	Look	FS 1	FS 2
255	55	107	1	3		Beat box song	Pull DR		
259	56	108	2	3		End Song	Push to DL		
263	58	112	3	5		"But my daughter"	shift focus		
265	58	113	3	5		"He neither does nor shall"	reintroduce patts. For Polix.		
267	59	114	3	5		Polix. Big reveal	Push Back Diags.	Up Polix.	
269	60	115	8	16		Polix exits	Restore w/ lingering patts. Time Shift	Dn. Polix.	
271			8	16		"I'll hear you by and by"	Emph. DR		
273	61	118	3	5		Camillo's Aside	Pull down		
275	62	120	20	40		"How Camillo?"	Restore		
277	63	123	40	1:20		enter Autolycus	SR stairs up - Shift to Evening	Up Auto.	
279	63	124	3	5		"whole army"	Pull up DR	Dn. Auto	
283	65	127	3	5		Exit Florz, Perd, Camil.	Pull Down	Up Auto.	
285	65	127	40	1:20		Enter Clown and Shep.	Open Up	Dn. Auto.	

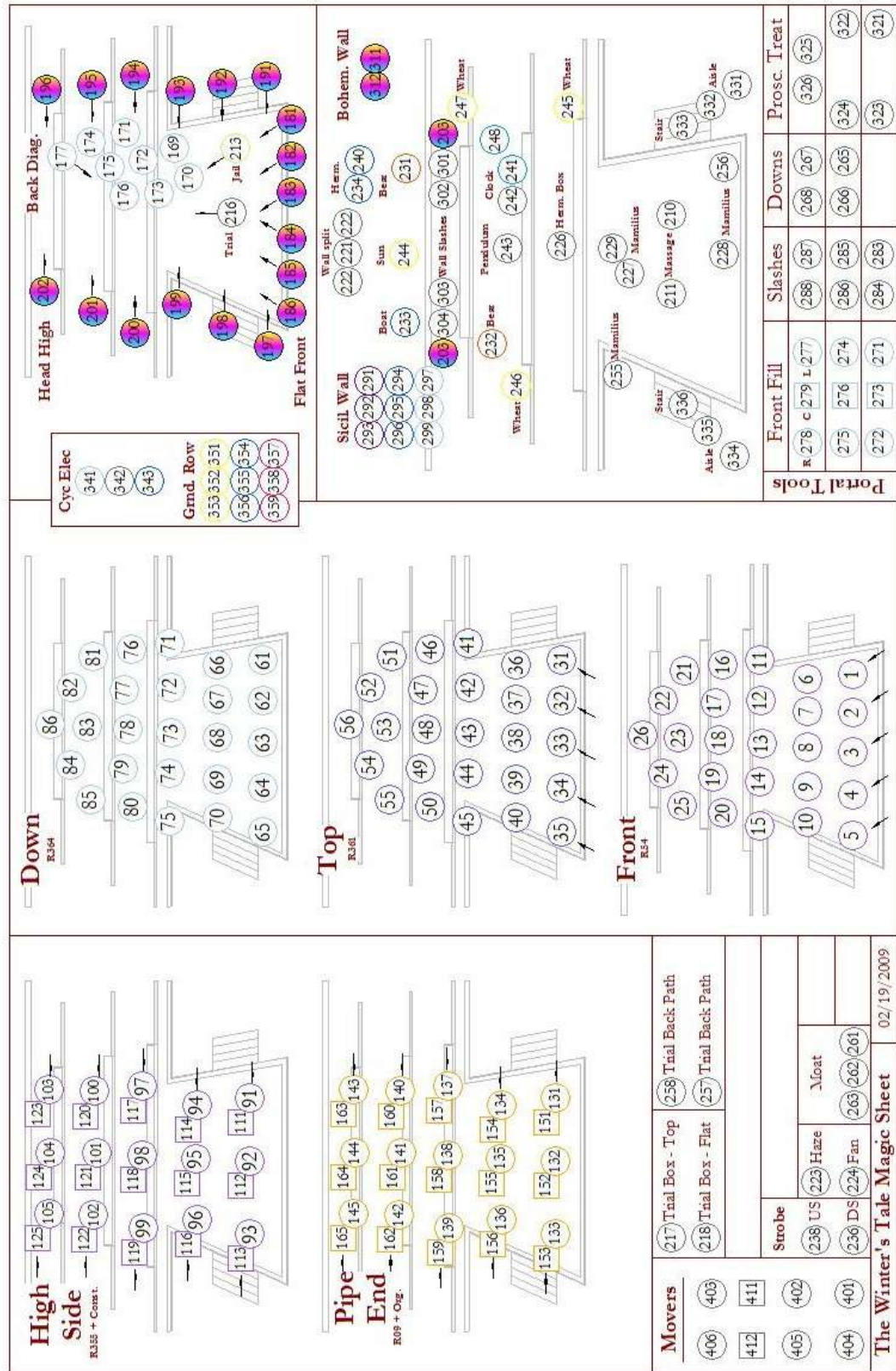
The Winter's Tale
Cue Track

Lighting Design by: Brian Engel
ALD: Andrew Dorman, Jonathan Dillard

Cue	PG #	PG # AS	Time Up	Time Dn	W	D	Action	Look	FS 1	FS 2
291	68	134	3	5			Exit Clown and Shep	Pull to Autolycus		Up Auto.
293	69	134	2	3			End Scene	Transition - Big Shift to Sicilia		Dn. Auto.
Pt 2			6	/		10				
301	70	135	3	5			V.i.	Leontes Palace - something has changed - tight	Up Leont.	Up Paul.
306	72	140	3	5			Enter Gentleman	From UL open the scene.		
308	73	141	8	16			Exit Cleo and others	Pull down to DC		
310	73	141	3	5			Enter Cleo, Floriz, Perd.	Open up area		Dn. Paul.
316	76	146	2	3			End Scene	Transition		Dn. Leont.
PT 2			3	/						
318	76	146	1	3			V.ii.	Gentlemen scene All DS and Outdoor		
323	79	151	3	4			Gentlemen Exit	Shift from Autolycus and Shep/Clown		
325	80	154	1	2			End of Scene	Big Transition / Scene SR stairs		
327	80	154	8	16			V.iii.	Paulina's Chapel - Push Glass From USR		
PT 2			40	/						
332	83	159	2	3			W/ Music	Begin Statue Magic		
334	83	159	6	12			Hermione moves	Big shift of angle and motivation	Up Herm.	

Cue	PG #	AS	PG # Time		W	D	Action	Look		FS 1	FS 2
			Up	dn							
336	83	159	8	16			"Lawful as eating"	For Polix. DR emph.			
338	83	160	8	16			Hermione Speaks	Pull down push dramatic angles			
340	84	161	10	20			Leontes Speaks		Dn. Herm.	Up Leont.	
343	84	161	4	16				Pull down to Leo and Herm.			
345	84	161	8	12			"lead away"	pull down to trans + Mamilius		Dn. Leont.	
346			0	1			B/O				
PT 2			2	/							
348	84	161	3	5			Curtain Call				
349	84	161	3	6			End of Call	Transition			
350	84	161	3	5			House Up	Post show			

MAGIC SHEET



APPENDIX D: PRODUCTION PHOTOGRAPHS



Preshow



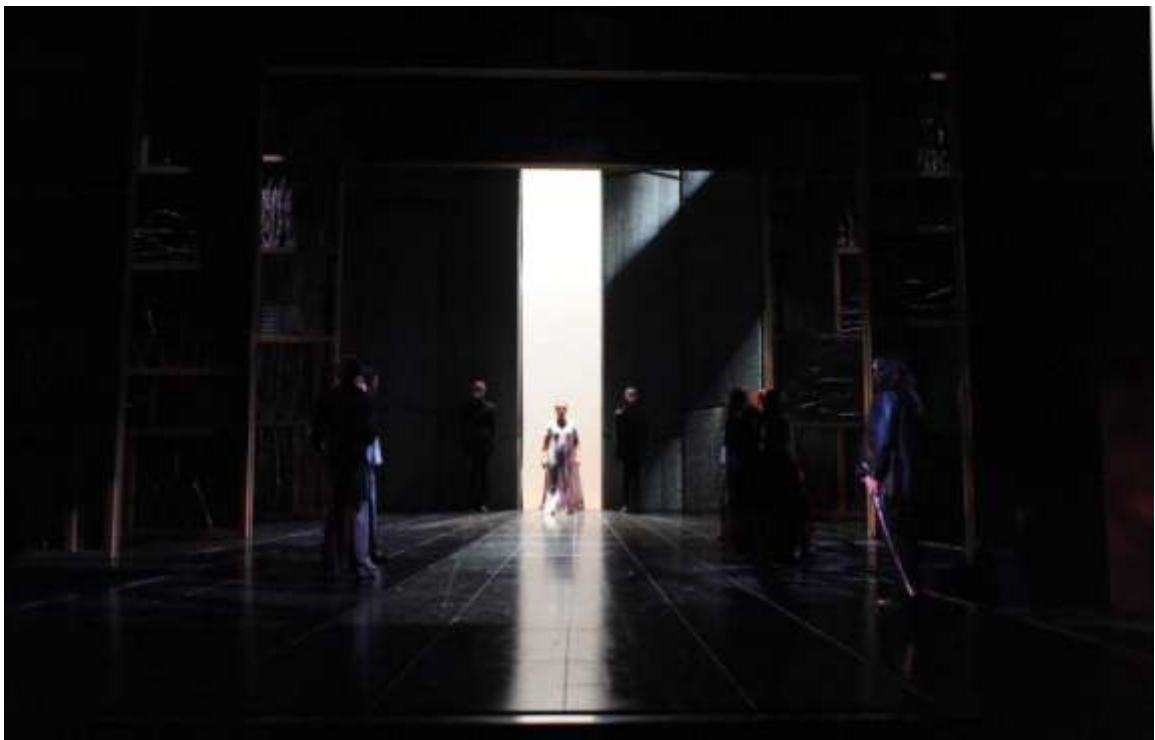
ACT I.i. – Sicilia Tango



ACT I.ii – The Palace in Sicilia



ACT II.iii. – The King's Office



ACT III.ii – The Trial of Hermione



ACT III.ii – The Trial of Hermione



ACT III.ii – Hermione's Death



ACT IV.i – The chorus introduction into Bohemia



ACT IV.iv – The Sheep Shearing Festival



ACT V.iii – Paulina's Garden

BIBLIOGRAPHY

Barouh, Stan. *Production Photography*.

Chevallier, Florence. *Enchantment*. Munich: Kehayoff Verlag, 2001.

Corbis online visual image database. <http://pro.corbis.com/>

Flickr online visual image database. <http://flickr.com/>

Lockwood, C.C. *Still Waters; Images, 1971-1999*. Baton Rouge: Louisiana State University Press, 2000.

Okun, Jenny. *Variations; The Architecture Photographs of Jenny Okun*. New York: Five Ties Publishing, 2007

Pafford, J.H.P., ed. *The Winter's Tale*. London: Thomson Learning, 2006

Rantoul, Neal. *American Series*. Boston: Pond Press, 2006.

Uelsmann, Jerry. *Other Realities*. New York: Bulfinch Press, 2005

Uelsmann, Jerry N. *Twenty-Five Years*. Boston: Little, Brown and Company, 1982.

Vallhonrat, Javier. *Javier Vallhonrat*. Barcelona: BOM, 2006.

Weingarten, Robert. *6:30 am*. Ostfildern-Ruit: Hatje Cantz Verlag, 2005.

Woodward, Richard B. *Aberlardo Morell*. New York: Phaidon, 2005.