

ABSTRACT

Title of Thesis: LIGHTING DESIGN OF THE ASHGIRL INA & JACK
KAY THEATRE CLARICE SMITH PERFORMING
ARTS CENTER UNIVERSITY OF MARYLAND

Rebecca Melissa Wolf, Master of Fine Arts, 2008

Thesis Directed by: Asst. Professor, Harold Burgess II, Department of Theatre

The purpose of this thesis defense is to provide all materials needed for the realization of the lighting design of the University of Maryland Department of Theatre's 2008 production of *The Ashgirl*. This thesis consists of the following; research images to aid in the conceptual process of the lighting design, a rough wishlist which is preliminary paperwork when developing ideas for the lighting design, draftings of all three plates for the lighting design to aid electricians in hanging the light plot, as well as a channel hookup and an instrument schedule needed for the process of mounting the production. A magic sheet has been included which is necessary for the lighting designer during the cueing process in order to locate channels as promptly as possible, as well as a cue track which organizes all the cues written by the lighting designer throughout the course of tech and dress rehearsals. Archival photographs of the production as seen in the performance have been included as well, in order to visually document the ultimate production.

LIGHTING OF THE ASHGIRL
INA & JACK KAY THEATRE
CLARICE SMITH PERFORMING ARTS CENTER UNIVERSITY OF MARYLAND

By

Rebecca Melissa Wolf

Thesis submitted to the Faculty of the Graduate School of the
University of Maryland, College Park in partial fulfillment
of the requirements for the degree of
Master of Fine Arts
2008

Advisory Committee:

Asst. Professor, Harold Burgess II, Chair

Asst. Professor, Leslie Felbain

Professor, Helen Huang

Table of Contents

Appendix A: Pre Production Materials

Design Concept Statement.....4

Research Materials.....6

Appendix B: Plates

Light Plot.....11

Appendix C: Supporting Paperwork

Wish List.....14

Magic Sheet.....20

Cue Track.....21

Channel Hookup.....32

Instrument Schedule.....44

Appendix D: Production Photographs.....58

Bibliography.....63

Appendix A: Pre Production Materials

Design Concept Statement for *The Ashgirl*.

The Ashgirl is based on the story of Cinderella with a few exceptions. There is a much darker undertone to the whole show due to the addition of the seven deadly sins as characters that interact with the human characters of the show. Themes such as bodily mutilation, self-esteem, parental desertion, physical and mental abuse, coming of age and coping with all of the seven deadly sins are just some of the topics *The Ashgirl* touches upon. There are three locations that we represented for this production, the house of the evil stepmother, the forest where the Sins lived and the palace where the royal family lived. Much of the change in setting was created by a drastic change in lighting with the exception of a window for the house and chandelier's that flew in for the palace.

Stylistically, we conceived of this production of *The Ashgirl* as a dark fairytale within a forest of nightmares. The forest being the surroundings for the main character Ashgirl; can be objects as well as people that help to create this nightmarish world she exists in. The idea that certain locations breed horror and self-doubt while others spawn hope and creativity was a goal for all designers, especially with the lighting design. Therefore, in breaking down the three main locations of the production one can see these emotions represented visually.

The forest was the most influential location for the characters and was also intended to permeate the visual emotion of the other settings as well. It was the source of all evil that existed in the play and seeped into the characters who interacted with it. For

the lighting design, this location was the darkest and extremely visually distorted. I created shadows to underscore the fear and mystery for spectators and bright colors to transform this location.

The house on the other hand used a less extreme angle, color and texture of light while keeping with the theme of the dark fairytale. At times this location was a haven, which is why the lighting in general is less extreme when compared to the forest lighting. Emanating light that supported the idea of the main character feeling abused by her family, I used a green sidelight that helped the characters appear cruel and abusive.

The final location was the palace, which was treated with magical tools and was meant to be the source of confidence and inspiration for the protagonist. The angles of light are at their highest in this location and the colors are at their warmest; creating an inviting and more comfortable atmosphere for the main character to discover her love and confidence.

The magical atmosphere of The Ashgirl played a major part in creating tools for my design. I kept the idea of a dark fairytale in mind while allowing optimism and love to remain slightly, until it was able to consume the final moments.

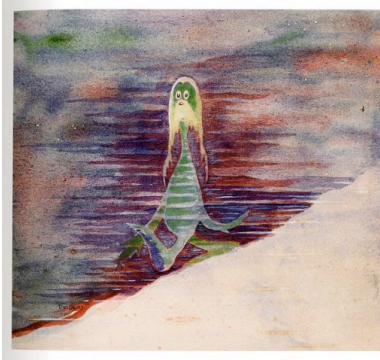
Appendix A: Pre Production Materials



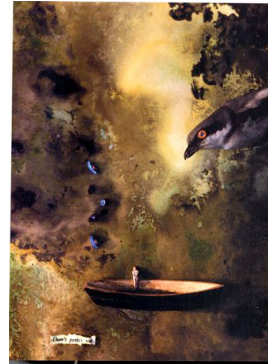
(Standen, Amy)



(<http://pro.corbis.com/>)



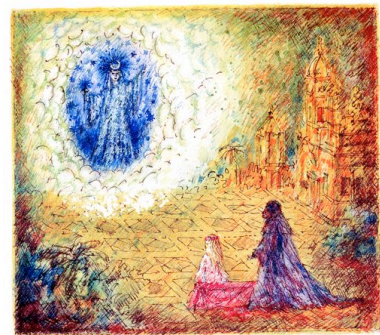
(Dr. Seuss)



(Standen, Amy)



(Standen, Amy)

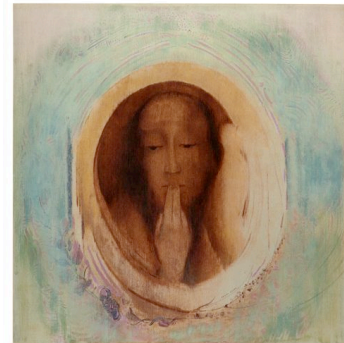


(Mancini, Andrea.)

Appendix A: Pre Production Materials



Hammacher, Abraham Marie



Garcia, Camille Rose



(<http://pro.corbis.com/>)



(Standen, Amy)



(Mancini, Andrea.)



(Venosa, Bob)

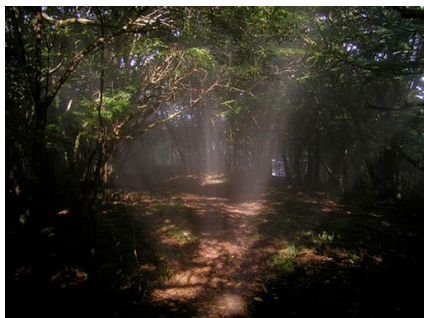
Appendix A: Pre Production Materials



(Dr. Seuss)



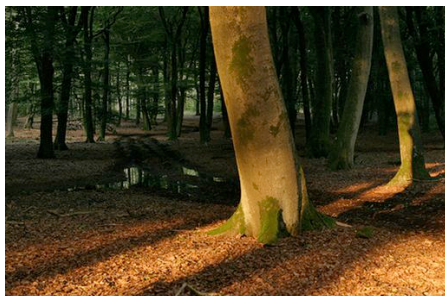
(Hammacher, Abraham Marie)



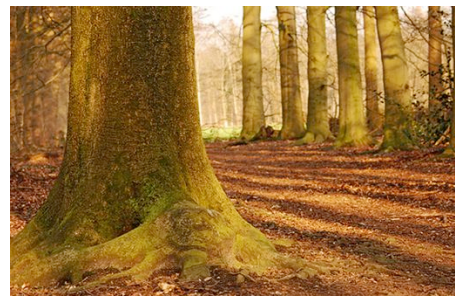
(<http://pro.corbis.com/>)



(Redon, Odilon)



(<http://pro.corbis.com/>)



(<http://pro.corbis.com/>)

Appendix A: Pre Production Materials



(<http://pro.corbis.com/>)



(<http://pro.corbis.com/>)



(Andera, Margaret)



(Mancini, Andrea.)



(Mancini, Andrea.)



(Redon, Odilon)

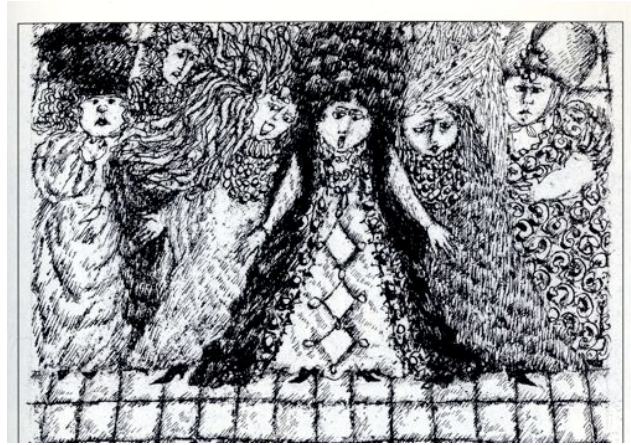
Appendix A: Pre Production Materials



(Redon, Odilon)



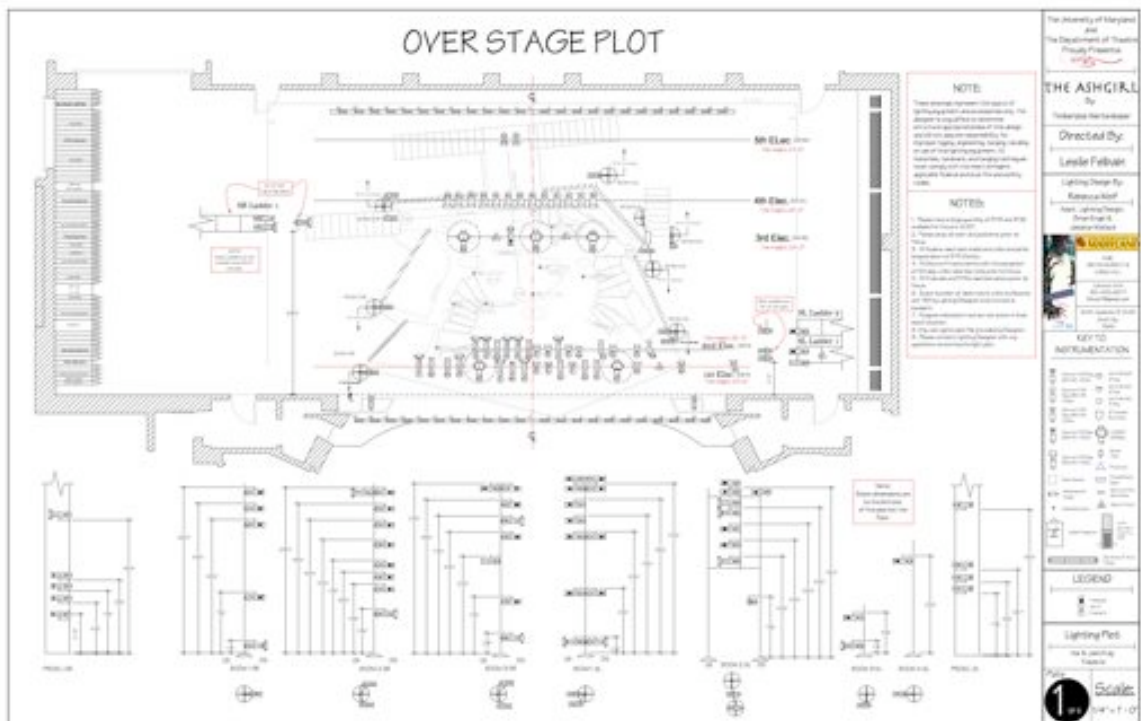
(Redon, Odilon)



(Mancini, Andrea)

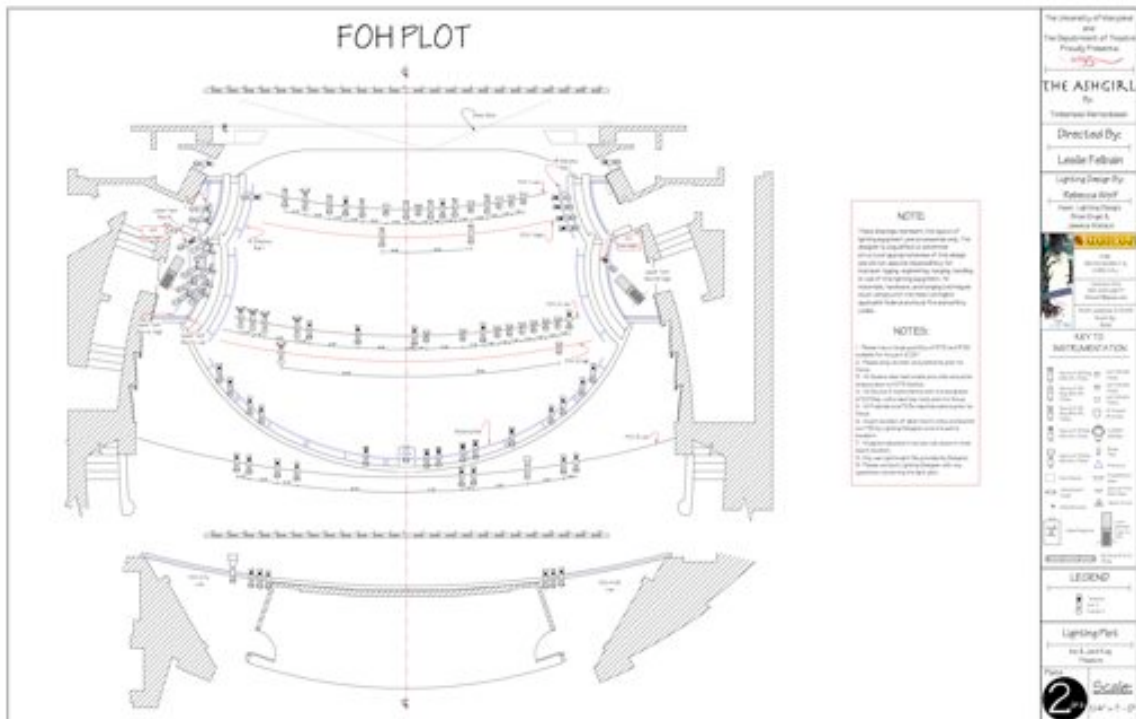
Appendix B: Plates

Plate 1



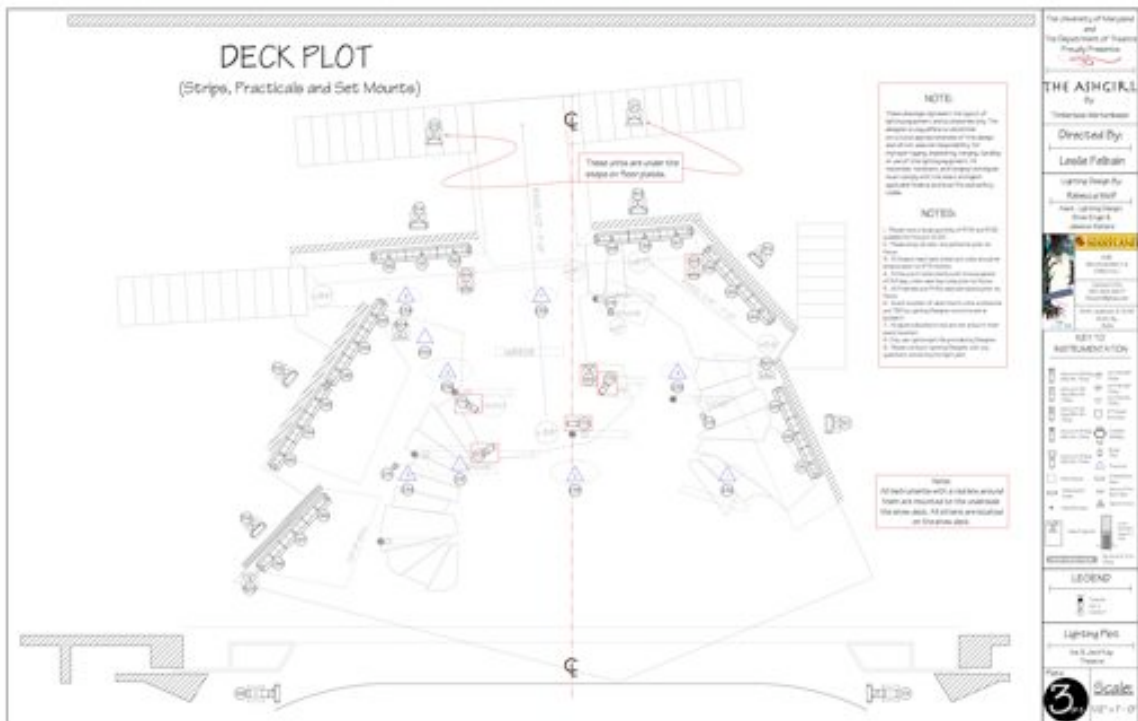
Appendix B: Plates

Plate 2



Appendix B: Plates

Plate 3



Appendix C: Supporting Paperwork

Wish List

1 of 4 Kajal Sharma		The Ash Girl				Last update by: AM 1/3/08	
Shared Tools							
The Mood Setter - Tuning System - OSR Diagonal Front - 45° vert. angle (2 Locations) - Pallets							
OW	Zone	Unit Type	Notes	Position	Color	Temp.	
1	A	34 19 DGL		10w 2			
2	B	34 19 DGL		10w 2			
3	C	34 19 DGL		10w 2			
4	D	34 19 DGL		SR 10CH 60W			
5	E	34 19 DGL		SR 10CH 60W			
6	F	34 19 DGL		10w 2			
7	G	34 19 DGL		SR 10CH 60W			
8	H	34 19 DGL		SR 10CH 60W			
9	I	34 19 DGL		SR 10CH 60W			
10	J	25 DGL		SR 10CH 60W			
11	K	25 DGL		10w 2			
12	L	25 DGL		SR 10CH 60W			
13	M	25 DGL		SR 10CH 60W			
14	N	25 DGL		SR 10CH 60W			
15	O	25 DGL		SR 10CH 60W			
16	P	25 DGL		10w 1			
17	Q	25 DGL		SR 10CH 60W			
18	R	25 DGL	AT 28W	1 ELCC			
19	S	25 DGL	AT 28W	1 ELCC			
20	T	25 DGL	AT 28W	2 ELCC			
21	U	25 DGL	AT 28W	1 ELCC			
22	V	25 DGL	AT 28W	1 ELCC			
23	W	25 DGL	AT 28W	1 ELCC			
24	X	25 DGL	AT 28W	1 ELCC			
25	Y	25 DGL	AT 28W	1 ELCC			
26	Z	25 DGL	AT 30W	2 ELCC			
27	AA	25 DGL	AT 28W	1 ELCC			
Halo Glow - Back Light - Radiating from Center - Cool							
OW	Zone	Unit Type	Notes	Position	Color	Temp.	
31	1	8" Fresnel		L.S. 45° about 20'			
32	2	8" Fresnel		L.S. 45°			
33	3	8" Fresnel		L.S. 45°			
34	4	8" Fresnel		L.S. 45°			
35	5	8" Fresnel		L.S. 45°			
36	6	8" Fresnel		L.S. 45°			
37	7	8" Fresnel		L.S. 45°			
38	8	8" Fresnel		L.S. 45°			
39	9	8" Fresnel		L.S. 45°			
40	10	8" Fresnel		L.S. 45°			
41	11	8" Fresnel		L.S. 45°			
42	12	8" Fresnel		L.S. 45°			
43	13	8" Fresnel		L.S. 45°			

Wish List

2 of 3 Rough notes	<i>The Ash Girl</i>				Last update by: RR 1/16/08	
Palace Tools						
Provides a lighter/Any feeling of grandure - DSL Diagonal Front/Top - 50° vert. - Get to Faces - KEY						
Ch#	Zone	Unit Type	Notes	Position	Color	Temp.
31	A	MSP FAS		POH 2		
32	B	MSP FAS		POH 2		
33	C	MSP FAS		POH 2		
34	D	MSP FAS		POH 2		
35	E	MSP FAS		POH 2		
36	F	MSP FAS		POH 2		
37	G	MSP FAS		POH 2		
38	H	MSP FAS		POH 2		
39	I	MSP FAS		POH 2		
40	J	MFL FAS		POH 1		
41	K	MFL FAS		POH 1		
42	L	MFL FAS		POH 1		
43	M	MFL FAS		POH 1		
44	N	MFL FAS		POH 1		
45	O	MFL FAS		POH 1		
46	P	MFL FAS		1 EL2C		
47	Q	MFL FAS	AT 28°W	1 EL2C		
48	R	MFL FAS	AT 28°W	1 EL2C		
49	S	MFL FAS	AT 28°W	1 EL2C		
50	T	MFL FAS	AT 28°W	1 EL2C		
51	U	MFL FAS	AT 28°W	1 EL2C		
52	V	MFL FAS	AT 28°W	1 EL2C		
53	W	MFL FAS	AT 28°W	1 EL2C		
54	X	MFL FAS	AT 28°W	1 EL2C		
55	Y	MFL FAS	AT 28°W	1 EL2C		
56	Z	MFL FAS	AT 50°D	2 EL2C		
57	AA	MFL FAS	AT 28°W	1 EL2C		
Twinkle system - Top of Booms Cross shots - Glass Pattern?						
Ch#	Zone	Unit Type	Notes	Position	Color	Temp.
61	DSL NEAR	24 DDC		SC001	warm	
62	DSL FAR	24 DDC		SC001	warm	
63	WALL	24 DDC		SC001	warm	
64	MSL NEAR	24 DDC		SC001	warm	
65	MSL FAR	24 DDC		SC001	warm	
66	WALL	24 DDC		SC001	warm	
67	USL NEAR	24 DDC		SC002	warm	
68	USL FAR	24 DDC		SC002	warm	
69	WALL	24 DDC		SC002	warm	
70	DSL NEAR	24 DDC		SC003	warm	
71	DSL FAR	24 DDC		SC003	warm	
72	WALL	24 DDC		SC003	warm	
73	MSL NEAR	24 DDC		SC004	warm	
74	MSL FAR	24 DDC		SC004	warm	
75	WALL	24 DDC		SC004	warm	
76	USL NEAR	24 DDC		SC005	warm	
77	USL FAR	24 DDC		SC005	warm	
78	WALL	24 DDC		SC005	warm	

Appendix C: Supporting Paperwork

Wish List

2 of 8 Tough Tracker		<i>The Ash Girl</i>				Last update by: RM 1/15/18	
Forest Tools							
<i>Faders creepily - Skin Side Light - Key</i>							
Ch#	Lane	Unit Type	Notes	Position	Color	Temp.	
101	APRON	26 DEC 185		FOH BOOM			
102	DS	26 DEC 185		ROOM 1			
103	MS	26 DEC 185		ROOM 1			
104	LS	26 DEC 185		ROOM 2			
105	APRON	26 DEC 185		FOH BOOM			
106	DS	26 DEC 185		ROOM 3			
107	MS	26 DEC 185		ROOM 4			
108	LS	26 DEC 185		ROOM 5			
Head High Side Light - Texture Pushes through set, adds to creepiness							
Ch#	Lane	Unit Type	Notes	Position	Color	Temp.	
111	APRON	26 DEC 185		SAUC BAR			
112	DS	26 DEC 185		ROOM 1	red	yes	
113	MS	26 DEC 185		ROOM 1			
114	LS	26 DEC 185		ROOM 2			
115	APRON	26 DEC 185		SAUC BAR			
116	DS	26 DEC 185		ROOM 3			
117	MS	26 DEC 185		ROOM 4			
118	LS	26 DEC 185		ROOM 5			
House Tools							
<i>Forceful/Oppressive - Top Light - Straight on - Area Driven.</i>							
Ch#	Area	Unit Type	Notes	Position	Color	Temp.	
121	A	26 DEC 185		FOH 1			
122	B	26 DEC 185		FOH 1			
123	C	26 DEC 185		FOH 1			
124	D	26 DEC 185		FOH 1			
125	E	26 DEC 185		FOH 1			
126	F	26 DEC 185		FOH 1			
127	G	26 DEC 185		FOH 1			
128	H	26 DEC 185		FOH 1			
129	I	26 DEC 185		FOH 1			
130	J	36 DEC 185		1 SLIC			
131	K	36 DEC 185		1 SLIC			
132	L	36 DEC 185		1 SLIC			
133	M	36 DEC 185		1 SLIC			
134	N	36 DEC 185		1 SLIC			
135	O	36 DEC 185		1 SLIC			
136	P	36 DEC 185		2 SLIC			
137	Q	36 DEC 185		2 SLIC			
138	R	36 DEC 185		2 SLIC			
139	S	36 DEC 185		2 SLIC			
140	V	36 DEC 185		2 SLIC			

Wish List

# of S. Wish Number	<i>The Ash Girl</i>					Last edited by: MK 3/15/08
Unnatural Sunlight - SL Side - Vert. Height 13' - Motivated by the Window - Open Template						
Dist	Lens	Unit Type	Notes	Position	Color	Temp.
141	NE WS	25 DEG 180		SCOM 1		per/flash
142	FAE	25 DEG 180		SCOM 1		
143	NE WS	25 DEG 180		SR PROS. TOWER		
144	FAE	25 DEG 180		SR PROS. TOWER		
VL System - 2/3 US, 2 on 1st E.						
Dist		Unit Type	Notes	Position	Color	Temp.
151		VL		1 ELEC.		
152		VL		1 ELEC.		
153		VL		3 ELEC.		
154		VL		1 ELEC.		
155		VL		1 ELEC.		
UC Door, Specials - Push and Front						
Dist	Area	Unit Type	Notes	Position	Color	Temp.
161		WP, FAE	Upper Back	1 ELEC.		
162		25 DEG 180	Upper Front	2 ELEC.		
163		WP, FAE	Lower Back	under US stairs		
164		WP, FAE	Lower Back	under US stairs		
165		WP, FAE	Lower Front	under deck mount?		
Hearth Illumination - Soft and Warm - Ashes safe place						
Dist	Area	Unit Type	Notes	Position	Color	Temp.
171		50 DEG 180	Front	Dist 3 LOW		
172		Birds	Back Diag	under deck		
173		Birds	Back Diag	under deck		
174		Birds	Back Diag	under deck		
175		Birds	Back Diag	under deck		
Scenic Tools						
DS Wall Treatment - Mirrors from the deck - Lower section of US walls also						
Dist	Area	Unit Type	Notes	Position	Color	Temp.
181	DL WALL	Wire strips	Palace - bright warm		warm	
182	ML WALL	Wire strips	House - dim warm		warm	
183	UL WALL	Wire strips	Forest			
184	DL WALL	Wire strips				
185	ML WALL	Wire strips				
186	UL WALL	Wire strips				
187	LR WALL	Wire strips			cool	

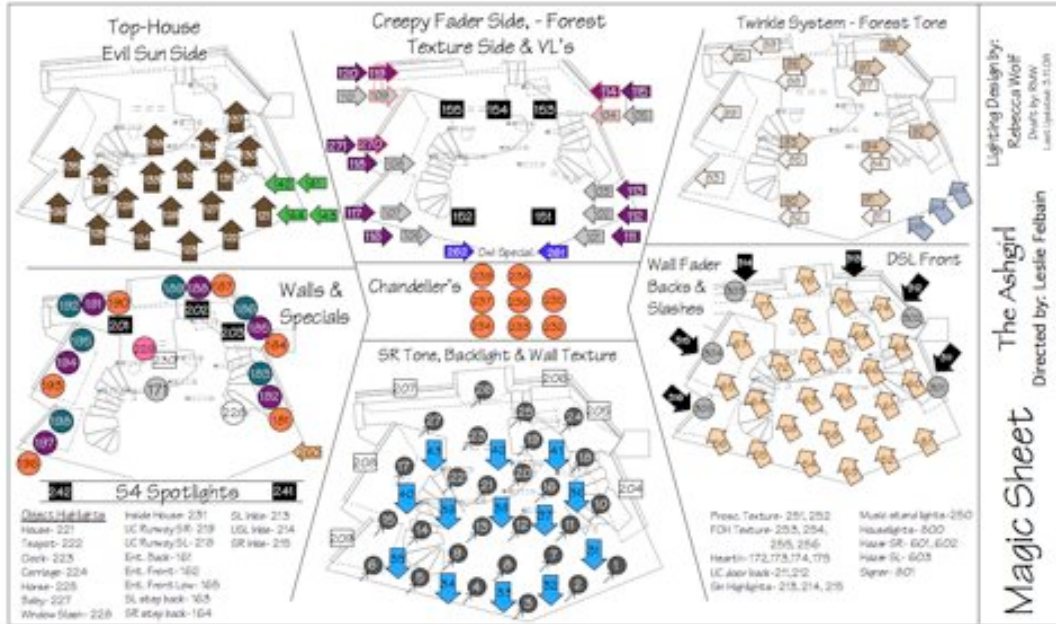
Wish List

1 of 3 Rough Interior	<i>The Ash Girl</i>					List updated by: MW 5/15/08
US Upper Wall Treatment - Faders from opposing Rooms - cool						
Q#	Area	Unit Type	Notes	Position	Color	Temp.
188	IA WALL	50 DEC ERS	no higher than 10'	ROOM 2		
189	IB WALL	34 DEC ERS	no higher than 10'	ROOM 2		
190	IC WALL	25 DEC ERS	above 13.2'	ROOM 3		
Wall Texture - from opposing Rooms with Templates - Organic - Used in 2 locations.						
Q#	Area	Unit Type	Notes	Position	Color	Temp.
191	DA WALL	50 DEC ERS		1 ELEC.		
192	DB WALL	24 DEC ERS		ROOM 1		
193	IA WALL	50 DEC ERS		ROOM 2		
194	DB WALL	50 DEC ERS		1 ELEC.		
195	IB WALL	34 DEC ERS		1 ELEC.		
196	IC WALL	34 DEC ERS		ROOM 2		
Intensify the Creep - Under Stairs - SL and SR						
Q#	Area	Unit Type	Notes	Position	Color	Temp.
201		WFL F48		under SL stairs	Cool	
202		WFL F48		under SR stairs	Cool	
Bridles for Sins - Need Locations						
Q#	Area	Unit Type	Notes	Position	Color	Temp.
203		Bridles				
204		Bridles				
205		Bridles				
206		Bridles			Cool	
207		Bridles			Cool	
Object Highlights - above head height, Proscenium L and R						
Q#	Area	Unit Type	Notes	Position	Color	Temp.
211		19 DEC ERS	house	SR PROSCENIUM		
212		19 DEC ERS	teapot (RST)	SR PROSCENIUM		
213		19 DEC ERS	clock (RST)	SR PROSCENIUM		
214		19 DEC ERS	carriage	SL PROSCENIUM		
215		19 DEC ERS	rocking horse	SL PROSCENIUM		
216		19 DEC ERS	key			
217		19 DEC ERS	baty			
Window Specials						
Q#	Area	Unit Type	Notes	Position	Color	Temp.
218		19 DEC ERS	Sheen	2 ELEC.	Warm	

Wish List

ID#	Area	Unit Type	Notes	Position	Color	Temp.
Mirror Special - For Fairy entrance + rotator						
219		24 205 185	rotator	I.G.C.	W/C	
220			rotator			
Practicals						
Objects on Poles						
ID#	Area	Unit Type	Notes	Position	Color	Temp.
221		A-Lamp	House			
Chandeliers						
ID#	Area	Unit Type	Notes	Position	Color	Temp.
222	OS	780	Chandeliers			
223	OS	780	Chandeliers			
224	OS	780	Chandeliers			
225	MS	780	Chandeliers			
226	MS	780	Chandeliers			
227	MS	780	Chandeliers			
228	US	780	Chandeliers			
229	US	780	Chandeliers			
230	US	780	Chandeliers			
Follow Spots from Tech Boxes at - J operators						
ID#	Area	Unit Type	Notes	Position	Color	Temp.
231		14' 185			Cool	Yes
232		14' 185			Cool	Yes
		75				
		75				
House						
ID#	Area	Unit Type	Notes	Position	Color	Temp.
233			Power, food			
FOH wall treatment - Template - Organic tied to US Walls.						
ID#	Area	Unit Type	Notes	Position	Color	Temp.
234		895			Warm	
235		895			Warm	
?		895			Warm	
?		895			Warm	
?		895			Warm	
?		895			Warm	
Signer						
ID#	Area	Unit Type	Notes	Position	Color	Temp.
300	Signer	895			Warm	

Magic Sheet



Cue Track

The Ashes University of Westland New Zealand		The Book				Lighting Design Reference Table 1/1/19		
Cue	Page	Time Up	Time Down	W	Action	Look	Follow 1 -	Follow 2 -
1	1	3	11			Pre-show		
2	1	7	9		Music over Video	House 1/2		
3	1	9	9			Fade to B/O		
3.1	1	9	9		Video Out	Downer close		
4								
5	1	7	9	7	Light Up			
6		8	8					
7								
8	1	10	12		Fix Action	Faces		
9								
10	11	8	7	3	Ash reveals video's error	widens up a bit		
10.1	11	10	12					
11	11	8	7		Up on Ash	brighten		
12								
13								
14								
15	11	7	9		with actors	Prep for scene change		
16								
17	11	12	14		Shift w/ Music	Father @ window + Ash DSR		
18								
19	11	8	12		just before Ash to search	@ search		
20								

Cue Track

The Ring		The Deck		Lighting Design			
University of Maryland				Admission Hall			
Theater of the Future				1/15/18			
Act	Scene	Time	W	Action	Look	Follow 1 -	Follow 2 -
21	11	15	12	Family Enters	Open up		
22							
23							
24	11	16	20		Mimic emotions of speech		
25							
26	11	18	14		Shift back to their world		
27	11	19	1		Shift for emotions again		
28							
29							
30	17	8	15	w/ music	Shift to upper palace		
31							
32							
33							
34							
35	18	8	15	Paul's entrance	Color shift for Paul + under deck for sara		
36							
37	19	12	14	Transition	Transfer to Forest		
38							
39	20	8	4	Anger jumps down	Intensity for Anger		

Cue Track

The Academy of Motion Picture Arts and Sciences					Cue Track		Lighting Design February 2018 3/3/18	
CP	Page	Time Up	Time Out	W	Action	Look	Follow 1 -	Follow 2 -
40								
41								
42	31	1	11		Pavel's entrance	Open upper platform		
43								
44	31	8	7		Angel's jump down from platform	Intensify - red's		
45								
46	31	12	11		as sadness enters	Subtle darkness for Sadness		
47								
48	31	7	9		as sadness exits	Restore to Sim		
49	31	15	11		As Sim leaves	lighting dip		1 frame 3.6
50								
51	31	18	11	7	no music	shift to house		4
52	31	4	9			fade to black		
53								
54								
55	31	13	14		with mother's jealousy	Pull up look for emotions		
56		3	7	7		VI prep		
56.1		3.5	11	7		VI prep		
57	31	12	14		Sadness appears	shift into Sadness		
58		3	9	4	look up		1 - Ann frame 3.6	1 - Sadness frame 3.8
58.1		3	9			VI prep		
59	31	6	7		Owl enters	Owl brings hope		

Cue Track

The College University of Maryland Dept. of Theatre				Cue Track		Lighting Design Delaney Hall 1/1/18		
C/P	F/P	Time Up	Time Down	W	Action	Look	Fellow 1 -	Fellow 2 -
18								
19	16	18	16		Judith enters	light under platform for Judith	↓	↓
20								
21								
22	17	14	12		Mirror flies in	up on Fairy UC		
23	17	13	12		Fairy exits	mirror Sp. up		
24								
25	18	10	11			Hope builds		
26	18				Spot out on Sedress			
27								
28								
29								
30	18	8	10		Fairy exposed	Fairy Up		↑ Frame 5.8
31	18				Spot out on Fairy			↓
32		4	10					
33	18	7	10			change for Othello		
34	18	9	10		For UC Entrance	Move		
35	18	3	8			UC entrance down		
36								
37	18	10	10			pull down to shelf		
38								

Cue Track

The Citadel University of Maryland Dept. of Theatre				Cue Track		Lighting Design Fabrice Wolf 3/3/18		
Cue	Page	Time Start	Time End	W	Action	Look	Follow 1 -	Follow 2 -
100	41	11	14			pull into Fairy		
100								
100.4	41	2	3			spot, VL prep		
101	41	14	14		Spiders Enter	Enter UC		
102								
103	41	8	10		As they reach her	Spider look - with VLs	↑ frame 1.6	
104								
105	41	3	3		speed up w/ music	Flash VLs		
106								
107	41	12	10		transform	Restore to house with twinkie system		
108	41	8	10		spiders enter	Spot Fairy	↑ frame 1.6	
109	41	3	3		w/ music	exit look - twinkie system	↓	
110	41	10	12			Exit		
111	41	10	12	30	interruption	House Up- Spot out on fairy as she exits in house	↓	
111.5	41	10	10			VL prep		
111.7	41	3	3			VL prep		
112	41	3	3			House 1/2		
112.5	41	5	5		Mother enters with headlights up	Spot mother in house	↑ frame 1.6	
113	41	5	7	12	family on platform & one below	House out = dancer look onstage		
113.5		3	3			VL prep		
114	41	5	7					
115	41	2	5		Dancer exit	Father creeps onstage from DL		
116								
117	41	3	5		Fir Ash and Otter enter	Enter UC		

Cue Track

The Script		Scene		Time		W	Action	LOOK	Follow 1 -	Follow 2 -
Page	Line	Start	End	Start	End					
118	41						Spits up	Ash and Amir	T Frame 3.0	T Frame 3.0
119										
120										
121										
122	41	3	5				Move to Platform	DS VLS	J	J
123	41	5	6				mom's entrance	open UC platform - VLS down		
124	41	6	7				for Zefira	brings warmth		
125										
126										
127	41	8	8				with character action	Trans to DS	T - Ash here 3.4	T - Amir here 3.4
128	41	8	8					Slow darkness - open UC lower exit		
129										
130	41						Spot out on Ash		J	
131	41	9	10					still to darkness - close UC exit		
132										
133										
134	41	9	9				Trans	spot & Trans into forest	T - Ash here 3.6	
135	41	9	9				He grabs Ash	Set Spot up on Man		T - Man here 1.4
136										
137	41						Spot out on Man			J

Cue Track

The School University of Maryland Dept. of Theatre		Cue Track				Lighting Design Fall 2011 11/1/11	
✓	Foot	Time	W	Action	Look	Follow 1 -	Follow 2 -
	Size	Start	End				
138							
139							
140							
141							
142	60	7	10	owl enters	he brings a little softness		
143	60	8	10		deeper sadness		
144	60	3	6	change for Owl	hand for her to see him		
145	17	7	8	mouse enter	hope from mouse - shift O/S		
146	17	8		Spot out slowly		J	
147	17	3	4	"mouse are nice..."	brighten - hopeful - quick!		
148	18	3	5	scene up	transition into house - w/ shts		
149							
150							
151							
152	60	4	8	scene up	Transition into split scene - shts under		
153							
154	60	3		Spot Up	Ash enters	F - Ash there i.e.	
155							
156	60	3	8		Magic returns		
157							

Cue Track

The Light University of Maryland Dept. of Theatre				Cue Book		Lighting Design Andrew Hall 4/4/18		
Cue #	Page	Time In	Time Out	W	Action	Look	Follow 1 -	Follow 2 -
155	51	7	9			green tender - VL for Amir		
156	51	12	12		Fairy enters	equality of light for both levels	↓	
157								
158	51	8	11		Trans	trans into house w/ sime below US		at top T - Great
159								
160								
161	51	8	10			slow fade to green		
162								
163	51	7	9			pull down keep spot - almost forest look		
164								
165	51	5	7			trans to forest - the sime song Low light		↓
166								
167	51	6	9		After song	returns to forest		
168								
169	51	5	7		3 x Spots Up		T - over	T - Past
170								
171	51	6	9			intensity look		
172								
173	51	4			Spots out		↓	↓
174								
175	51	3	9		Family Enters	open all of DS - keep forest look		

Cue Track

The Inherit		University of Maryland		Dept. of Theatre		Cue Track		Lighting Design	
								Admission Ticket	
								11/4/18	
Act	Scene	Time	Start	End	Action	Look	Follow 1 -	Follow 2 -	
111									
112	10	8	10			Trans for Ashie - creepify	F - Ashie here 1.1		
113									
114									
115									
116									
117									
118	10	9	7	7		Trans for DC forest - no hope - Dark			
119	10	8	11		Judith stands	pull in tighter			
120									
121	10	8	10			pull light - use side light			
122									
123	10	8	8			open up for family a little	J		
124									
125	10	8	10			shift in focus - subtle, slow, very wrong - sits in forest			
126	10	11	12		look up		F - Ashie here 1.1		
127									
128	10	7	10			subtle brightening - small			
129									
130	10	8	8			build look up - intensely spot			
131									
132	10	8	8			Brighten			

Cue Track

The Stage University of Maryland Dept. of Theatre			Cue Track			Lighting Design Edmund Hoff 1/14/18	
Page	Time Start	Time End	W	Action	Look	Follow 1 -	Follow 2 -
187	15	4			VL Shift		
188							
189	15	4		Spot out		L	
190							
191	15	6	4		Shift to Honestly - open for father		
192	15	11	10		green shift for Ruth + fairy UC platform VLS		
193							
194							
195	15	8	11	music for Zahra	Zahra UC on Floor	T - Amaliah hanna 3.0	T - Zahra hanna 3.0
196							
197							
198							
199							
200							
201	15	11	5		Pull to Zahra DC = dim spots on Ash and Amir	Dim to 1/2	
202							
203	15	8	8		Open SR steps for fairy - lose VL up top. Keep DC open		L - Zahra
204	15	8	8		pull into Ash, don't lose Zahra		
205							
206	15	9	10		lose steps - spot steps w/ Ash		T - Fairy hanna 3.0
207							

Cue Track

The Adelphi University of Warwick Dept. of Theatre		Cue Track				Lighting Design Richard Hull 1/18/18		
Cue	Act	Time	Sec	W	Action	Look	Follow 1 -	Follow 2 -
216								
217	41	1	30			pop KNS a bit		
218	41	18	20			pull in - concentrate on Ash & Anne DC - Twinkle Sys		
219								
220	41	8	8			pull down into twinkle system		L - Fats
221								
222								
223								
224	41	14	46			creepy look for everyone - open crawling in on Fats		
225	41	4				spot out on Ash		L - Ash
226	41	1	1			B/O feet		
227	41	3	8			Spots		
228	41	8	14			Darken for Sins		
229								
230	41	8	7			House up - Post show		

Channel Hookup

The Ash Girl

CHANNEL HOOKUP

Page 1
5/2/08

LD: Rebecca Wulf
The Univ. of Maryland
Dept. of Theatre

Channel	Dim	Position	UF	Type, Accessories, Watts	Purpose	Color/Temp
(1)	50	FOH 2 High	2	Source 4 19degair- 575w	DSR TONE	Heat, T->
		"	2a	M Faderair-	DMX 1037	-, T->
(2)	46	FOH 2 Low	15	Source 4 19degair- 575w	DSR TONE	Heat, T->
		"	15a	M Faderair-	DMX 1148	-, T->
(3)	47	FOH 2 Low	17	Source 4 19degair- 575w	DSR TONE	Heat, T->
		"	17a	M Faderair-	DMX 1201	-, T->
(4)	120	Upr Tech Box HL Top	4	Source 4 19degair- 575w	DSR TONE	Heat, T->
		"	4a	M Faderair-	DMX 1025	-, T->
(5)	81	Lwr Tech Box HL Top	1	Source 4 19degair- 575w	DSR TONE	Heat, T->
		"	2a	M Faderair/TH	DMX 1145	-, T->
(6)	51	FOH 2 Low	14	Source 4 19degair- 575w	DSR TONE	Heat, T->
		"	14a	M Faderair-	DMX 1115	-, T->
(7)	119	Upr Tech Box HL Bot	1	Source 4 19degair- 575w	DSR TONE	Heat, T->
		"	1a	M Faderair-	DMX 1339	-, T->
(8)	118	Upr Tech Box HL Bot	5	Source 4 19degair- 575w	DSR TONE	Heat, T->
		"	5a	M Faderair-	DMX 1328	-, T->
(9)	83	Upr Tech Box HL Bot	4	Source 4 19degair- 575w	DSR TONE	Heat, T->
		"	4a	M Faderair-	DMX 1061	-, T->
(10)	117	Upr Tech Box HL Top	3	Source 4 19degair- 575w	DSR TONE	Heat, T->
		"	3a	M Faderair-	DMX 1088	-, T->
(11)	48	FOH 2 Low	16	Source 4 19degair- 575w	DSR TONE	Heat, T->
		"	16a	M Faderair-	DMX 1103	-, T->
(12)	115	Upr Tech Box HL Bot	3	Source 4 19degair- 575w	DSR TONE	Heat, T->
		"	3a	M Faderair-	DMX 1310	-, T->
(13)	114	Upr Tech Box HL Bot	2	Source 4 19degair- 575w	DSR TONE	Heat, T->
		"	2a	M Faderair-	DMX 1048	-, T->
(14)	113	Upr Tech Box HL Top	2	Source 4 19degair- 575w	DSR TONE	Heat, T->
		"	2a	M Faderair-	DMX 1097	-, T->
(15)	85	FOH 1 Low	15	Source 4 19degair- 575w	DSR TONE	Heat, T->
		"	15a	M Faderair-	DMX 1106	-, T->

Channel Hookup

The Ash Girl

CHANNEL HOOKUP

Page 2
5/2/08

Channel	Dim	Position	UF	Type, Accessories, Watts	Purpose	ColorTemp
(16)		Ler Tech Box HL Top	2	Source 4 18degel- 575w	DSR TONE	Heat, T-
		"	2a	M Faderel-	DMX 1031	-, T-
(17)	212	1 Elec	17	Source 4 26degel- 575w	DSR TONE	Heat, T-
		"	17a	M Faderel-	DMX 1142	-, T-
(18)	280	2 Elec	15	Source 4 26degel- 575w	DSR TONE	Heat, T-
		"	15a	M Faderel-	DMX 1094	-, T-
(19)	281	2 Elec	16	Source 4 26degel- 575w	DSR TONE	Heat, T-
		"	16a	M Faderel-	DMX 1118	-, T-
(20)	207	1 Elec	14	Source 4 36degel- 575w	DSR TONE	Heat, T-
		"	14a	M Faderel-	DMX 1109	-, T-
(21)	202	1 Elec	12	Source 4 36degel- 575w	DSR TONE	Heat, T-
		"	12a	M Faderel-	DMX 1112	-, T-
(22)	358	SR BOOM 2	3	Source 4 36degel- 575w	DSR TONE	Heat, T-
		"	3a	M Faderel-	DMX 1055	-, T-
(23)	357	SR PROSC	2	Source 4 36degel- 575w	DSR TONE	Heat, T-
		"	2a	M Faderel-	DMX 1065	-, T-
(24)	199	1 Elec	10	Source 4 36degel- 575w	DSR TONE	Heat, T-
		"	10a	M Faderel-	DMX 1049	-, T-
(25)	217	2 Elec	12	Source 4 26degel- 575w	DSR TONE	Heat, T-
		"	12a	M Faderel-	DMX 1124	-, T-
(26)	218	2 Elec	13	Source 4 26degel- 575w	DSR TONE	Heat, T-
		"	13a	M Faderel-	DMX 1079	-, T-
(27)	213	2 Elec	8	Source 4 26degel- 575w	DSR TONE	Heat, T-
		"	8a	M Faderel-	DMX 1058	-, T-
(31)	257	4 Elec	2	8" Fresnel- 2kw	BACKLIGHT	R362, T-
(32)	254	4 Elec	5	8" Fresnel- 2kw	BACKLIGHT	R362, T-
(33)	383	4 Elec	7	8" Fresnel- 2kw	BACKLIGHT	R362, T-
(34)	263	4 Elec	9	8" Fresnel- 2kw	BACKLIGHT	R362, T-
(35)	261	4 Elec	11	8" Fresnel- 2kw	BACKLIGHT	R362, T-
(36)	258	4 Elec	1	8" Fresnel- 2kw	BACKLIGHT	R362, T-
(37)	255	4 Elec	4	8" Fresnel- 2kw	BACKLIGHT	R362, T-
(38)	253	4 Elec	6	8" Fresnel- 2kw	BACKLIGHT	R362, T-
(39)	262	4 Elec	10	8" Fresnel- 2kw	BACKLIGHT	R362, T-

Channel Hookup

The Ash Girl

CHANNEL HOOKUP

Page 3
5/2/08

Channel	Dim	Position	UM	Type, Accessories, Watts	Purpose	ColorTemp
(40)	259	4 Elec	13	8" Fresnel- 2kw	BACKLIGHT	R362, T-
(41)	256	4 Elec	3	8" Fresnel- 2kw	BACKLIGHT	R362, T-
(42)	264	4 Elec	8	8" Fresnel- 2kw	BACKLIGHT	R362, T-
(43)	260	4 Elec	12	8" Fresnel- 2kw	BACKLIGHT	R362, T-
(51)	70	FDH 2 Low	5	S4 PAR NSPwr- 575w	DSL FRONT	R04, T-
(52)	72	FDH 2 High	1	S4 PAR NSPwr- 575w	DSL FRONT	R04, T-
(53)	74	FDH 2 Low	3	S4 PAR NSPwr- 575w	DSL FRONT	R04, T-
(54)	69	FDH 2 Low	6	S4 PAR NSPwr- 575w	DSL FRONT	R04, T-
(55)	66	FDH 2 Low	9	S4 PAR NSPwr- 575w	DSL FRONT	R04, T-
(56)	62	FDH 2 Low	10	S4 PAR NSPwr- 575w	DSL FRONT	R04, T-
(57)	73	FDH 2 Low	2	S4 PAR NSPwr- 575w	DSL FRONT	R04, T-
(58)	71	FDH 2 Low	4	S4 PAR NSPwr- 575w	DSL FRONT	R04, T-
(59)	68	FDH 2 Low	7	S4 PAR NSPwr- 575w	DSL FRONT	R04, T-
(60)	107	FDH 1 Low	1	S4 PAR MFLwr- 575w	DSL FRONT	R04, T-
(61)	106	FDH 1 Low	2	S4 PAR MFLwr- 575w	DSL FRONT	R04, T-
(62)	105	FDH 1 Low	3	S4 PAR MFLwr- 575w	DSL FRONT	R04, T-
(63)	103	FDH 1 Low	5	S4 PAR MFLwr- 575w	DSL FRONT	R04, T-
(64)	97	FDH 1 Low	9	S4 PAR MFLwr- 575w	DSL FRONT	R04, T-
(65)	94	FDH 1 Low	11	S4 PAR MFLwr- 575w	DSL FRONT	R04, T-
(66)	165	1 Elec	2	S4 PAR MFLwr- 575w	DSL FRONT	R04, T-
(67)	198	1 Elec	9	S4 PAR MFLwr- 575w	DSL FRONT	R04, T-
(68)	240	1 Elec	1	S4 PAR MFLwr- 575w	DSL FRONT	R04, T-
(69)	237	2 Elec	3	S4 PAR WFLwr- 575w	DSL FRONT	R04, T-
(70)	238	2 Elec	4	S4 PAR MFLwr- 575w	DSL FRONT	R04, T-
(71)	194	1 Elec	6	S4 PAR WFLwr- 575w	DSL FRONT	R04, T-
(72)	196	1 Elec	8	S4 PAR WFLwr- 575w	DSL FRONT	R04, T-
(73)	272	2 Elec	7	S4 PAR MFLwr- 575w	DSL FRONT	R04, T-
(74)	182	2 Elec	6	S4 PAR WFLwr- 575w	DSL FRONT	R04, T-
(75)	236	2 Elec	2	S4 PAR MFLwr- 575w	DSL FRONT	R04, T-

Channel Hookup

The Ash Girl

CHANNEL HOOKUP

Page 4
5/2/08

Channel	Dim	Position	LR	Type, Accessories, Watts	Purpose	Color/Temp
(76)	274	2 Elec	9	S4 PAR MFLw/- 575w	DSL FRONT	RD4, T:-
(77)	275	2 Elec	10	S4 PAR MFLw/- 575w	DSL FRONT	RD4, T:-
(81)	399	SL BOOM 1	5	Source 4 36degw/TH 750w	TWINKLE SYSTEM	N/C, T:G548
(82)	397	SL BOOM 1	3	Source 4 36degw/TH 750w	TWINKLE SYSTEM	N/C, T:G548
(83)	395	SL BOOM 1	1	Source 4 26degw/TH 750w	TWINKLE SYSTEM	N/C, T: R55005
(84)	400	SL BOOM 1	6	Source 4 36degw/TH 750w	TWINKLE SYSTEM	N/C, T:G548
(85)	398	SL BOOM 1	3	Source 4 36degw/TH 750w	TWINKLE SYSTEM	N/C, T:G548
(86)	396	SL BOOM 1	1	Source 4 26degw/TH 750w	Spare	N/C, T:-
(87)	299	SL BOOM 2	5	Source 4 30degw/- 750w	TWINKLE SYSTEM	N/C, T:G548
(88)	296	SL BOOM 2	2	Source 4 36degw/- 750w	TWINKLE SYSTEM	N/C, T:G548
(89)	295	SL BOOM 2	1	Source 4 26degw/- 750w	TWINKLE SYSTEM	N/C, T: R55005
(90)	225	SR BOOM 1	3	Source 4 36degw/TH 750w	TWINKLE SYSTEM	N/C, T:G548
(91)	224	SR BOOM 1	2	Source 4 36degw/TH 750w	TWINKLE SYSTEM	N/C, T:G548
(92)	223	SR BOOM 1	1	Source 4 26degw/TH 750w	TWINKLE SYSTEM	N/C, T: R55005
(93)	221	SR BOOM 2	3	Source 4 36degw/TH 750w	TWINKLE SYSTEM	N/C, T:G548
(94)	220	SR BOOM 2	2	Source 4 36degw/- 750w	TWINKLE SYSTEM	N/C, T:G548
(95)	229	SR BOOM 2	1	Source 4 26degw/TH 750w	TWINKLE SYSTEM	N/C, T: R55005
(96)	285	SR BOOM 3	3	Source 4 30degw/- 750w	TWINKLE SYSTEM	N/C, T:G548
(97)	283	SR BOOM 3	1	Source 4 36degw/TH 750w	TWINKLE SYSTEM	N/C, T:G548
(98)	284	SR BOOM 3	2	Source 4 26degw/TH 750w	TWINKLE SYSTEM	N/C, T: R55005
(99)	301	SL BOOM 2		Source 4 36degw/- 750w	TWINKLE SYSTEM	- , T:R55005
(101)	382	DECK SL	1	Source 4 26degw/- 575w	FADER SIDELIGHT	Heat, T:-
			1a	M Faderw/-	DMX 1082	- , T:-
(102)	293	SL BOOM 1	11	Source 4 26degw/- 575w	FADER SIDELIGHT	Heat, T:-
			11a	M Faderw/-	DMX 1127	- , T:-
(103)	294	SL BOOM 1	12	Source 4 26degw/- 575w	FADER SIDELIGHT	Heat, T:-
			12a	M Faderw/-	DMX 1154	- , T:-
(104)	403	SL BOOM 3	2	Source 4 26degw/- 575w	FADER SIDELIGHT	Heat, T:-
			2a	M Faderw/-	DMX 1345	- , T:-

Channel Hookup

The Ash Girl

CHANNEL HOOKUP

Page 5
5/2/08

Channel	Dim	Position	UR	Type, Accessories, Watts	Purpose	Color/Temp
(105)	401	SL BOOM 2	7	Source 4 26degw/ 575w	FADER SIDELIGHT	Heat, T-
			7a	M Faderw/-	DMX 1130	-, T-
(106)	358	DECK SR	2	Source 4 26degw/ 575w	FADER SIDELIGHT	Heat, T-
			2a	M Faderw/-	DMX 1043	-, T-
(107)	227	SR BOOM 1	5	Source 4 26degw/ 575w	FADER SIDELIGHT	Heat, T-
			5a	M Faderw/-	DMX 1052	-, T-
(108)	233	SR BOOM 2	5	Source 4 26degw/ 575w	FADER SIDELIGHT	Heat, T-
			5a	M Faderw/-	DMX 1133	-, T-
(109)	258	SR BOOM 3	8	Source 4 26degw/ 575w	FADER SIDELIGHT	Heat, T-
			8a	M Faderw/-	DMX 1034	-, T-
(110)	388	SR LADDER 1	1	Source 4 26degw/ 575w	FADER SIDELIGHT	Heat, T-
			1a	M Faderw/-	DMX 1121	-, T-
(111)	160	HR BALC	1	Source 4 26degw/TH 750w	TEXTURE SIDE	R57, T.G674
(112)	291	SL BOOM 1	9	Source 4 26degw/TH 750w	TEXTURE SIDE	R57, T.G674
(113)	292	SL BOOM 1	10	Source 4 26degw/TH 750w	TEXTURE SIDE	R57, T.G674
(114)	402	SL BOOM 3	1	Source 4 26degw/TH 750w	TEXTURE SIDE	R57, T.G674
(115)	300	SL BOOM 2	6	Source 4 26degw/ 750w	TEXTURE SIDE	R57, T.G674
(116)	143	HL BALC	1	Source 4 26degw/TH 750w	TEXTURE SIDE	R57, T.G674
(117)	228	SR BOOM 1	4	Source 4 26degw/TH 750w	TEXTURE SIDE	R57, T.G674
(118)	232	SR BOOM 2	4	Source 4 26degw/TH 750w	TEXTURE SIDE	R57, T.G674
(119)	255	SR BOOM 3	7	Source 4 26degw/TH 750w	TEXTURE SIDE	R57, T.G674
(120)	287	SR BOOM 3	5	Source 4 26degw/TH 750w	TEXTURE SIDE	R57, T.G674
(121)	104	FDH 1 Low	4	Source 4 26degw/TH 750w	TOPLIGHT	L747, T-
(122)	102	FDH 1 High	1	Source 4 26degw/TH 750w	TOPLIGHT	L747, T-
(123)	100	FDH 1 Low	8	Source 4 26degw/TH 750w	TOPLIGHT	L747, T-
(124)	93	FDH 1 High	2	Source 4 26degw/TH 750w	TOPLIGHT	L747, T-
(125)	90	FDH 1 Low	14	Source 4 26degw/TH 750w	TOPLIGHT	L747, T-
(126)	84	FDH 1 Low	16	Source 4 26degw/TH 750w	TOPLIGHT	L747, T-
(127)	101	FDH 1 Low	6	Source 4 26degw/TH 750w	TOPLIGHT	L747, T-
(128)	98	FDH 1 Low	10	Source 4 26degw/TH 750w	TOPLIGHT	L747, T-
(129)	92	FDH 1 Low	12	Source 4 26degw/TH 750w	TOPLIGHT	L747, T-

Channel Hookup

The Ash Girl

CHANNEL HOOKUP

Page 6
5/2/08

Channel	Dim	Position	UM	Type, Accessories, Watts	Purpose	Color/Temp
(130)	235	2 Elec	1	Source 4 36degr/TH 750w	TOPLIGHT	L747, T-
(131)	190	1 Elec	4	Source 4 36degr/TH 750w	TOPLIGHT	L747, T-
(132)	195	1 Elec	7	Source 4 36degr/TH 750w	TOPLIGHT	L747, T-
(133)	279	2 Elec	14	Source 4 36degr/TH 750w	TOPLIGHT	L747, T-
(134)	208	1 Elec	15	Source 4 36degr/TH 750w	TOPLIGHT	L747, T-
(135)	210	1 Elec	16	Source 4 36degr/TH 750w	TOPLIGHT	L747, T-
(136)	192	1 Elec	5	Source 4 36degr/TH 750w	TOPLIGHT	L747, T-
(137)	239	2 Elec	5	Source 4 36degr/TH 750w	TOPLIGHT	L747, T-
(138)	276	2 Elec	11	Source 4 36degr/ 750w	TOPLIGHT	L747, T-
(141)	289	SL BOOM 1	7	Source 4 25degr/TH 750w	SUNLIGHT SIDE	R87, T.G676
(142)	290	SL BOOM 1	8	Source 4 25degr/TH 750w	SUNLIGHT SIDE	R87, T.G676
(143)	394	SL LADDER 1	2	Source 4 25degr/ 750w	SUNLIGHT SIDE	R87, T.G676
(144)	393	SL LADDER 1	1	Source 4 25degr/ 750w	SUNLIGHT SIDE	R87, T.G676
(151)	187	1 Elec	3	VL 1000w/ 1kw	DMX 1424	-, T-
(152)	204	1 Elec	13	VL 1000w/ 1kw	DMX 1454	-, T-
(153)	250	3 Elec	1	VL 1000w/ 1kw	DMX 1596	-, T-
(154)	249	3 Elec	2	VL 1000w/ 1kw	DMX 1926	-, T-
(155)	247	3 Elec	4	VL 1000w/ 1kw	DMX 1666	-, T-
(161)	384	5 Elec	1	S4 PAR WFLw/BD 575w	ENT. BACK	R16, T-
	-	-	2	-	-	-
(162)	200	1 Elec	11	Source 4 25degr/TH 750w	UPPER ENT.	R82, T-
(163)	448	UNDER SHOW DECK	1	S4 PAR MFLw/TH 575w	SL STEP BACK	R16, T-
(164)	451	UNDER SHOW DECK	2	S4 PAR MFLw/TH 575w	SR STEP BACK	R16, T-
(165)	452	UNDER SHOW DECK	3	S4 PAR WFLw/ 575w	UC ENT FRONT	R82, T-
(171)	31	FCH 3 Low	3	Source 4 10degr/ 750w	HEARTH	-, T-
(172)	454	UNDER SHOW DECK	1	Birdiew/ 75w	HEARTH	R03, T-
(173)	456	UNDER SHOW DECK	2	Birdiew/ 75w	HEARTH	R03, T-
(174)	455	UNDER SHOW DECK	3	Birdiew/ 75w	HEARTH	R03, T-

Channel Hookup

The Ash Girl

CHANNEL HOOKUP

Page 7
5/2/08

Channel	Dim	Position	UF	Type, Accessories, Walls	Purpose	Color/Temp
(175)	453	UNDER SHOW DECK	4	Birdiesl- 75w	HEARTH	R03, T-
(181)	431	DECK	1a	6' Zipstripel- 750w	GROUND ROW	R17+R104, T-
(182)	430	DECK	1b	6' Zipstripel- 750w	GROUND ROW	R57+R104, T-
(183)	429	DECK	1c	6' Zipstripel- 750w	GROUND ROW	R93+R104, T-
(184)	434	DECK	2a	6' Zipstripel- 750w	GROUND ROW	R17+R104, T-
(185)	433	DECK	2b	6' Zipstripel- 750w	GROUND ROW	R57+R104, T-
(186)	432	DECK	2c	6' Zipstripel- 750w	GROUND ROW	R93+R104, T-
(187)	441	DECK	3a	6' Zipstripel- 750w	GROUND ROW	R17+R104, T-
(188)	440	DECK	3b	6' Zipstripel- 750w	GROUND ROW	R57+R104, T-
(189)	439	DECK	3c	6' Zipstripel- 750w	GROUND ROW	R93+R104, T-
(190)	437	DECK	4a	6' Zipstripel- 750w	GROUND ROW	R17+R104, T-
(191)	436	DECK	4b	6' Zipstripel- 750w	GROUND ROW	R57+R104, T-
(192)	435	DECK	4c	6' Zipstripel- 750w	GROUND ROW	R93+R104, T-
(193)	425	DECK	5a	6' Zipstripel- 750w	GROUND ROW	R17+R104, T-
			5a			
(194)	424	DECK	5b	6' Zipstripel- 750w	GROUND ROW	R57+R104, T-
			5b			
(195)	423	DECK	5c	6' Zipstripel- 750w	GROUND ROW	R93+R104, T-
			5c			
(196)	428	DECK	7a	6' Zipstripel- 750w	GROUND ROW	R17+R104, T-
(197)	427	DECK	7b	6' Zipstripel- 750w	GROUND ROW	R57+R104, T-
(198)	426	DECK	7c	6' Zipstripel- 750w	GROUND ROW	R93+R104, T-
(201)	297	SL BOOM 2	4	Source 4 50degel- 575w	WALL TREATMENT	-, T-
			4a	M Faderel-	DMX 1040	

Channel Hookup

The Ash Girl

CHANNEL HOOKUP

Page 8
5/2/08

Channel	Dim	Position	UF	Type, Accessories, Watts	Purpose	Color/Temp
(202)	298	SL BOOM 2	3	Source 4 36degel- 575w	WALL TREATMENT	-, T-
		"	3a	M Faderel-	DMX 1028	"
(203)	286	SR BOOM 3	4	Source 4 26degel- 575w	WALL TREATMENT	-, T-
		"	4a	M Faderel-	DMX 1319	"
(204)	147	BALCONY RAIL	11	Source 4 19degel/TH 750w	WALL TEXTURE	NC, T:0630
(205)	148	BALCONY RAIL	6	Source 4 19degel/TH 750w	WALL TEXTURE	NC, T:0630
(206)	155	BALCONY RAIL	7	Source 4 19degel/TH 750w	WALL TEXTURE	NC, T:0630
(207)	150	BALCONY RAIL	9	Source 4 19degel/TH 750w	WALL TEXTURE	NC, T:0630
(208)	152	BALCONY RAIL	10	Source 4 19degel/TH 750w	WALL TEXTURE	NC, T:0630
(209)	156	BALCONY RAIL	5	Source 4 19degel/TH 750w	WALL TEXTURE	NC, T:0630
(211)	446	DECK	1	S4 PAR WFLw/BO 575w	UC DOOR BACK	R78, T-
(212)	447	DECK	2	S4 PAR WFLw/BO 575w	UC DOOR BACK	R78, T-
(213)	443	DECK	1	3" Fresnel- 100w	HIGHLIGHT	NC, T-
(214)	444	DECK	2	3" Fresnel- 100w	HIGHLIGHT	NC, T-
(215)	445	DECK	3	3" Fresnel- 100w	HIGHLIGHT	NC, T-
(218)	404	BOOM 4 SL	1	Source 4 26degel/TH 750w	US RUNWAY	R305, T:0674
(219)	288	SR BOOM 3	6	Source 4 36degel/TH 750w	US RUNWAY	R305, T:0674
(221)	360	SL PROSC	4	Source 4 19degel/TH 750w	OBJECT HIGHLIGHT	NC, T-
	359	"	5	"	"	"
(222)	360	SR PROSC	3	Source 4 19degel/TH 750w	OBJECT HIGHLIGHT	NC, T-
(223)	257	FOH 4 HL Low		Source 4 56degel- 575w	OBJECT HIGHLIGHT	-, T-
(224)	354	SR PROSC	4	Source 4 19degel/TH 750w	OBJECT HIGHLIGHT	NC, T-
(225)	361	SL PROSC	2	Source 4 19degel/TH 750w	OBJECT HIGHLIGHT	NC, T-
(226)		SL PROSC	3	Source 4 19degel/TH 750w	Cut	NC, T-
(227)	353	SR PROSC	5	Source 4 19degel/TH 750w	OBJECT HIGHLIGHT	NC, T-
(228)	364	SL PROSC	1	Source 4 19degel/TH 750w	WINDOW SLASH	NC, T-
(229)	248	3 Elec	3	Source 4 26degel/TH 750w	MIRROR ROTATOR	R37, T:0371, 0793
(230)		3rd Elec	3a	Gobo Rotatorel-	-	-, T-

Channel Hookup

The Ash Girl

CHANNEL HOOKUP

Page 9
5/2/08

Channel	Dim.	Position	LR	Type, Accessories, Watts	Purpose	Color/Temp
(231)	417	HOUSE	1	Lightel- 100w	PRACTICAL	NC, T-
(232)	379	LS 18	1	Lightel- 100w	PRACTICAL	~, T-
(233)	378	LS 18	2	Lightel- 100w	PRACTICAL	~, T-
(234)	377	LS 18	3	Lightel- 100w	PRACTICAL	~, T-
(235)	406	LS 30	4	Lightel- 100w	PRACTICAL	~, T-
(236)	405	LS 30	5	Lightel- 100w	PRACTICAL	~, T-
(237)		LS 39	6	Lightel- 100w	Cut	~, T-
(238)	387	LS 39	7	Lightel- 100w	PRACTICAL	~, T-
(239)	381	LS 39	8	Lightel- 100w	PRACTICAL	~, T-
(241)	124	Upr Tech Box HR Top	1	Source 4 18degel- 750w	SPOTLIGHT	BOOMERAN G, T.G 216
(242)	83	Upr Tech Box HL Top	1	Source 4 18degel- 750w	SPOTLIGHT	BOOMERAN G, T.G 216
(250)	499	DECK		Stand Lightel-	-	~, T-
(251)	118	BALCONY RAIL	1	Source 4 36degel/Th 750w	FOH TEXTURE	R99, T.G629
	"	"	2	"	"	"
	144	"	14	"	"	"
	"	"	15	"	"	"
(252)	119	BALCONY RAIL	3	Source 4 36degel/Th 750w	FOH TEXTURE	R99, T.G629
	"	"	4	"	"	"
	145	"	12	"	"	"
	"	"	13	"	"	"
(253)	34	FOH 3 Low	1	Source 4 36degel/Th 750w	FOH TEXTURE	R99, T.G629
	33	"	2	"	"	"
	8	"	8	"	"	"
	7	"	9	"	"	"
(254)	3	FOH 4 HL Low	1	Source 4 36degel/Th 750w	FOH TEXTURE	R99, T.G629
	2	"	2	"	"	"
	1	"	3	"	"	"
	40	FOH 4 HR Low	1	"	"	"
	39	"	2	"	"	"
	38	"	3	"	"	"

Channel Hookup

The Ash Girl

CHANNEL HOOKUP

Page 10
5/2/08

Channel	Dim	Position	UF	Type, Accessories, Watts	Purpose	Color/Temp
(255)	75	FOH 2 Low	1	Source 4 36degel/TH 750w	FOH TEXTURE	-, T-
	66	"	8	"	"	"
	61	"	11	"	"	"
	58	"	12	"	"	"
	53	"	13	"	"	"
	13	FOH 3 Low	4	Source 4 36degel/TH 575w	"	"
	17	"	5	"	"	"
	21	"	6	"	"	"
	26	"	7	"	"	"
(256)	99	FOH 1 Low	7	Source 4 36degel/TH 750w	FOH TEXTURE	-, T-
	91	"	13	"	"	"
(260)	392	SL LADDER 1		Source 4 36degel- 575w	Puppet Ent	R80, T-
(261)	173	SL Slot	1	Source 4 36degel/TH 575w	-	R80, T- Jagged Breakup
(262)	185	SR Slot	1	Source 4 36degel- 575w	-	R80, T- Jagged Breakup
(263)	172	HR BALC	2	Source 4 26degel/TH 750w	-	R52, T-Cloud
(264)	161	HR BALC	3	Source 4 26degel/TH 575w	-	R52, T-Cloud
(265)	162	HR BALC	4	Source 4 26degel/TH 575w	-	R52, T-Cloud
(270)	164	SR BOOM 2		Source 4 36degel/TH 575w	-	R52, T-G784
	-	"		"	"	"
(271)	245	SR BOOM 2		Source 4 36degel/TH 575w	-	R52, T-G784
(301)	307	DECK		S4 PAR NSPwr- 575w	WALL SLASHES	N/C, T-
(302)	310	SL BOOM 2		S4 PAR NSPwr- 575w	WALL SLASHES	N/C, T-
(303)	275	SR LADDER 1		Source 4 26degel- 575w	WALL SLASHES	N/C, T-
(304)	241	DECK		S4 PAR NSPwr- 575w	WALL SLASHES	N/C, T-
(305)	243	DECK		S4 PAR NSPwr- 575w	WALL SLASHES	N/C, T-
(311)	308	DECK		S4 PAR WFLwr- 575w	BACK WALL WASH	-, T-
		"		M Federal- 575w	CMX 1160	Heat, T-
(312)	309	DECK		S4 PAR WFLwr- 575w	BACK WALL WASH	Heat, T-
		"		M Federal- 575w	CMX 1157	"
(313)	311	DECK		S4 PAR WFLwr- 575w	BACK WALL WASH	Heat, T-
		"		M Federal- 575w	CMX 1172	"

Channel Hookup

The Ash Girl

CHANNEL HOOKUP

Page 11
5/2/08

Channel	Dim	Position	UF	Type, Accessories, Watts	Purpose	Coord/Temp
(314)	209	DECK		S4 PAR WFLwr- 575w	BACK WALL WASH	Heat, T:-
		*		M Federal- 575w	DMX 1163	*
(315)	242	DECK		S4 PAR WFLwr- 575w	BACK WALL WASH	Heat, T:-
		*		M Federal- 575w	DMX 1160	*
(316)	244	DECK		S4 PAR WFLwr- 575w	BACK WALL WASH	Heat, T:-
		*		M Federal- 575w	DMX 1169	*
(600)	213	1 Elec.		wr-	NO Power for 1E and 3E	-, T:-
	214	*		*	-	*
	386	Grid		*	-	*
(601)	468	Midrail SR		DF-50wr-	Haze	-, T:-
(602)	1525	Midrail SL		Uniquewr-	Haze	-, T:-
(603)	1525	Midrail SL		Unique Hazewr-	Haze	-, T:-
(604)	1538	BALCONY RAIL		Douzenwr-	-	-, T:-
(801)	28	FOH 3 Low		Source 4 10deg 750w	Signer	R 33

Channel Hookup

The Ash Girl		CHANNEL HOOKUP			Page 12 5/2/08	
Items WITHOUT Channel						
Channel	Qty	Position	U#	Type, Accessories, Vatts	Purpose	Color/Temp
267		BALCONY RAIL 3rd Elec	8	Source 4 19degel/TH T50w w/TH	Spire -	NIC, T- < T > -

Instrument Schedule

The Ash Girl

INSTRUMENT SCHEDULE

Page 1
5/2/08

LD: Rebecca Wolf
The Univ. of Maryland
Dept. of Theatre

LS 18

UF	Purpose	Type & Accessories	Watts	Color	Template	Dim	Chan
1	PRACTICAL	Lighter-	100w	-	-	378	(232)
2	PRACTICAL	Lighter-	100w	-	-	378	(233)
3	PRACTICAL	Lighter-	100w	-	-	377	(234)

LS 30

UF	Purpose	Type & Accessories	Watts	Color	Template	Dim	Chan
4	PRACTICAL	Lighter-	100w	-	-	406	(235)
5	PRACTICAL	Lighter-	100w	-	-	405	(236)

LS 39

UF	Purpose	Type & Accessories	Watts	Color	Template	Dim	Chan
6	Cut	Lighter-	100w	-	-		(237)
7	PRACTICAL	Lighter-	100w	-	-	387	(238)
8	PRACTICAL	Lighter-	100w	-	-	381	(239)

HOUSE

UF	Purpose	Type & Accessories	Watts	Color	Template	Dim	Chan
1	PRACTICAL	Lighter-	100w	NC	-	417	(231)

UNDER SHOW DECK

UF	Purpose	Type & Accessories	Watts	Color	Template	Dim	Chan
1	SL STEP BACK	S4 PAR MFLw/TH	575w	R16	-	448	(153)
1	HEARTH	Birdseal-	75w	R03	-	454	(172)
2	SR STEP BACK	S4 PAR MFLw/TH	575w	R16	-	451	(164)
2	HEARTH	Birdseal-	75w	R03	-	456	(173)
3	UC ENT FRONT	S4 PAR WFLw/-	575w	R52	-	452	(165)
3	HEARTH	Birdseal-	75w	R03	-	455	(174)
4	HEARTH	Birdseal-	75w	R03	-	453	(175)

Instrument Schedule

The Ash Girl

INSTRUMENT SCHEDULE

Page 2
5/2/08

DECK

UP	Purpose	Type & Accessories	Watts	Color	Template	Dim	Chan
	BACK WALL WASH	S4 PAR WFLen	575w	Heat	-	344	(316)
	BACK WALL WASH	S4 PAR WFLen	575w	Heat	-	343	(315)
	BACK WALL WASH	S4 PAR WFLen	575w	-	-	308	(311)
	BACK WALL WASH	S4 PAR WFLen	575w	Heat	-	309	(312)
	BACK WALL WASH	S4 PAR WFLen	575w	Heat	-	311	(313)
	BACK WALL WASH	S4 PAR WFLen	575w	Heat	-	269	(314)
	WALL SLASHES	S4 PAR NSPEn	575w	NC	-	241	(304)
	WALL SLASHES	S4 PAR NSPEn	575w	NC	-	243	(305)
	WALL SLASHES	S4 PAR NSPEn	575w	NC	-	307	(301)
	-	Stand Lightwh	-	-	-	499	(250)
	DMX 1160	M Faderen	575w	Heat	-	-	(311)
	DMX 1166	M Faderen	575w	Heat	-	-	(315)
	DMX 1169	M Faderen	575w	Heat	-	-	(316)
	DMX 1172	M Faderen	575w	Heat	-	-	(313)
	DMX 1163	M Faderen	575w	Heat	-	-	(314)
	DMX 1167	M Faderen	575w	Heat	-	-	(312)
1	UC DOOR BACK	S4 PAR WFLw/BD	575w	R76	-	446	(211)
1	HIGHLIGHT	3" Fresnelen	100w	NC	-	443	(213)
1a	GROUND ROW	6' Zstripen	750w	R17+ R104	-	431	(181)
1b	GROUND ROW	6' Zstripen	750w	R57+ R104	-	430	(182)
1c	GROUND ROW	6' Zstripen	750w	R93+ R104	-	429	(183)
2	UC DOOR BACK	S4 PAR WFLw/BD	575w	R76	-	447	(212)
2	HIGHLIGHT	3" Fresnelen	100w	NC	-	444	(214)
2a	GROUND ROW	6' Zstripen	750w	R17+ R104	-	434	(184)
2b	GROUND ROW	6' Zstripen	750w	R57+ R104	-	433	(185)
2c	GROUND ROW	6' Zstripen	750w	R93+ R104	-	432	(186)
3	HIGHLIGHT	3" Fresnelen	100w	NC	-	445	(215)
3a	GROUND ROW	6' Zstripen	750w	R17+ R104	-	441	(187)
3b	GROUND ROW	6' Zstripen	750w	R57+ R104	-	440	(188)
3c	GROUND ROW	6' Zstripen	750w	R93+ R104	-	439	(189)

Instrument Schedule

The Ash Girl

INSTRUMENT SCHEDULE

Page 3
5/2/08

DECK

U#	Purpose	Type & Accessories	Watts	Color	Template	Dim	Chan
4a	GROUND ROW	6' Zipstripel-	750w	R17+ R104	-	437	(192)
4b	GROUND ROW	6' Zipstripel-	750w	R57+ R104	-	436	(191)
4c	GROUND ROW	6' Zipstripel-	750w	R93+ R104	-	435	(192)
5a	GROUND ROW	6' Zipstripel-	750w	R17+ R104	-	425	(193)
5b	GROUND ROW	6' Zipstripel-	750w	R57+ R104	-	424	(194)
5c	GROUND ROW	6' Zipstripel-	750w	R93+ R104	-	423	(195)
6a	GROUND ROW	6' Zipstripel-	750w	R17+ R104	-	425	(193)
6b	GROUND ROW	6' Zipstripel-	750w	R57+ R104	-	424	(194)
6c	GROUND ROW	6' Zipstripel-	750w	R93+ R104	-	423	(195)
7a	GROUND ROW	6' Zipstripel-	750w	R17+ R104	-	428	(196)
7b	GROUND ROW	6' Zipstripel-	750w	R57+ R104	-	427	(197)
7c	GROUND ROW	6' Zipstripel-	750w	R93+ R104	-	426	(198)

DECK SR

U#	Purpose	Type & Accessories	Watts	Color	Template	Dim	Chan
2	FADER SIDELIGHT	Source 4 36degel-	575w	Heat	-	356	(106)
2a	DMX 1043	M Faderel-		-	-		(106)

DECK SL

U#	Purpose	Type & Accessories	Watts	Color	Template	Dim	Chan
1	FADER SIDELIGHT	Source 4 26degel-	575w	Heat	-	362	(101)
1a	DMX 1082	M Faderel-		-	-		(101)

Instrument Schedule

The Ash Girl

INSTRUMENT SCHEDULE

Page 4
5/2/08

1 Elec.

UM	Purpose	Type & Accessories	Watts	Color	Template	Dim	Chan
	ND Power for 1E and 3E	-w/-		-	-	214	(800)
	ND Power for 1E and 3E	-w/-		-	-	213	(800)
1	DSL FRONT	S4 PAR MF/Lw/-	575w	R04	-	240	(68)
2	DSL FRONT	S4 PAR MF/Lw/-	575w	R04	-	188	(68)
3	DMX 1424	VL 1000w/-	11w	-	-	187	(151)
4	TOPLIGHT	Source 4 36degr/TH	750w	L747	-	190	(131)
5	TOPLIGHT	Source 4 36degr/TH	750w	L747	-	192	(136)
6	DSL FRONT	S4 PAR WF/Lw/-	575w	R04	-	194	(71)
7	TOPLIGHT	Source 4 36degr/TH	750w	L747	-	195	(132)
8	DSL FRONT	S4 PAR WF/Lw/-	575w	R04	-	196	(72)
9	DSL FRONT	S4 PAR MF/Lw/-	575w	R04	-	198	(67)
10	DSR TONE	Source 4 36degr/-	575w	Heat	-	199	(24)
10a	DMX 1040	M Faderw/-		-	-		(24)
11	UPPER ENT	Source 4 26degr/TH	750w	R52	-	200	(162)
12	DSR TONE	Source 4 36degr/-	575w	Heat	-	202	(21)
12a	DMX 1112	M Faderw/-		-	-		(21)
13	DMX 1454	VL 1000w/-	11w	-	-	204	(152)
14	DSR TONE	Source 4 36degr/-	575w	Heat	-	207	(20)
14a	DMX 1109	M Faderw/-		-	-		(20)
15	TOPLIGHT	Source 4 36degr/TH	750w	L747	-	208	(134)
16	TOPLIGHT	Source 4 36degr/TH	750w	L747	-	210	(136)
17	DSR TONE	Source 4 26degr/-	575w	Heat	-	212	(17)
17a	DMX 1142	M Faderw/-		-	-		(17)

Instrument Schedule

The Ash Girl

INSTRUMENT SCHEDULE

Page 5
5/2/08

2 Elec.

U#	Purpose	Type & Accessories	Watts	Color	Template	Dm	Chan
1	TOPLIGHT	Source 4 36degr/TH	750w	L747	-	235	(130)
2	DSL FRONT	S4 PAR MF/Lw/-	575w	R04	-	236	(76)
3	DSL FRONT	S4 PAR WF/Lw/-	575w	R04	-	237	(88)
4	DSL FRONT	S4 PAR MF/Lw/-	575w	R04	-	238	(70)
5	TOPLIGHT	Source 4 36degr/TH	750w	L747	-	239	(137)
6	DSL FRONT	S4 PAR WF/Lw/-	575w	R04	-	183	(74)
7	DSL FRONT	S4 PAR MF/Lw/-	575w	R04	-	273	(73)
8	DSR TONE	Source 4 26degr/-	575w	Heat	-	273	(27)
8a	DMX 1058	M Faderw/-	-	-	-	-	(27)
9	DSL FRONT	S4 PAR MF/Lw/-	575w	R04	-	274	(78)
10	DSL FRONT	S4 PAR MF/Lw/-	575w	R04	-	275	(77)
11	TOPLIGHT	Source 4 36degr/-	750w	L747	-	276	(138)
12	DSR TONE	Source 4 26degr/-	575w	Heat	-	277	(25)
12a	DMX 1124	M Faderw/-	-	-	-	-	(25)
13	DSR TONE	Source 4 26degr/-	575w	Heat	-	278	(26)
13a	DMX 1070	M Faderw/-	-	-	-	-	(26)
14	TOPLIGHT	Source 4 36degr/TH	750w	L747	-	279	(133)
15	DSR TONE	Source 4 26degr/-	575w	Heat	-	280	(18)
15a	DMX 1094	M Faderw/-	-	-	-	-	(18)
16	DSR TONE	Source 4 26degr/-	575w	Heat	-	281	(19)
16a	DMX 1118	M Faderw/-	-	-	-	-	(19)

3 Elec.

U#	Purpose	Type & Accessories	Watts	Color	Template	Dm	Chan
1	DMX 1096	VL 1000w/-	1kw	-	-	280	(153)
2	DMX 1925	VL 1000w/-	1kw	-	-	249	(164)
3	MIRROR ROTATOR	Source 4 26degr/TH	750w	R37	G271, G793	248	(229)
4	DMX 1066	VL 1000w/-	1kw	-	-	247	(155)

Instrument Schedule

The Ash Girl

INSTRUMENT SCHEDULE

Page 6
5/2/08

4 Elec.

U#	Purpose	Type & Accessories	Watts	Color	Template	Dim	Chan
1	BACKLIGHT	8" Fresnel	2kw	R362	-	254	(36)
2	BACKLIGHT	8" Fresnel	2kw	R362	-	257	(31)
3	BACKLIGHT	8" Fresnel	2kw	R362	-	256	(41)
4	BACKLIGHT	8" Fresnel	2kw	R362	-	255	(37)
5	BACKLIGHT	8" Fresnel	2kw	R362	-	254	(32)
6	BACKLIGHT	8" Fresnel	2kw	R362	-	253	(38)
7	BACKLIGHT	8" Fresnel	2kw	R362	-	252	(33)
8	BACKLIGHT	8" Fresnel	2kw	R362	-	254	(42)
9	BACKLIGHT	8" Fresnel	2kw	R362	-	253	(34)
10	BACKLIGHT	8" Fresnel	2kw	R362	-	252	(39)
11	BACKLIGHT	8" Fresnel	2kw	R362	-	251	(35)
12	BACKLIGHT	8" Fresnel	2kw	R362	-	250	(43)
13	BACKLIGHT	8" Fresnel	2kw	R362	-	250	(40)

5 Elec.

U#	Purpose	Type & Accessories	Watts	Color	Template	Dim	Chan
1	ENT. BACK	S4 PAR WFLwRD	575w	R16	-	384	(161)
2	ENT. BACK	S4 PAR WFLwRD	575w	R16	-	384	(161)

FOH 1 Low

U#	Purpose	Type & Accessories	Watts	Color	Template	Dim	Chan
1	DSL FRONT	S4 PAR MFLwL	575w	R04	-	107	(60)
2	DSL FRONT	S4 PAR MFLwL	575w	R04	-	106	(61)
3	DSL FRONT	S4 PAR MFLwL	575w	R04	-	105	(62)
4	TOPLIGHT	Source 4 25degr/TH	750w	L747	-	104	(121)
5	DSL FRONT	S4 PAR MFLwL	575w	R04	-	103	(63)
6	TOPLIGHT	Source 4 25degr/TH	750w	L747	-	101	(127)
7	FOH TEXTURE	Source 4 36degr/TH	750w	-	-	99	(256)
8	TOPLIGHT	Source 4 25degr/TH	750w	L747	-	100	(123)
9	DSL FRONT	S4 PAR MFLwL	575w	R04	-	97	(64)
10	TOPLIGHT	Source 4 25degr/TH	750w	L747	-	98	(128)
11	DSL FRONT	S4 PAR MFLwL	575w	R04	-	94	(65)
12	TOPLIGHT	Source 4 25degr/TH	750w	L747	-	92	(129)
13	FOH TEXTURE	Source 4 36degr/TH	750w	-	-	91	(256)
14	TOPLIGHT	Source 4 25degr/TH	750w	L747	-	90	(125)
15	DSR TONE	Source 4 19degr/	575w	Heat	-	85	(15)
15a	DMX 1106	M Faderw/	-	-	-	-	(15)
16	TOPLIGHT	Source 4 25degr/TH	750w	L747	-	84	(126)

UMD Department of Theatre / Lightwright 4

4 Elec. thru FOH 1 Low

Instrument Schedule

The Ash Girl

INSTRUMENT SCHEDULE

Page 7
5/2/08

FOH 1 High

UF	Purpose	Type & Accessories	Watts	Color	Template	Dim	Chan
1	TOPLIGHT	Source 4 26degree/TH	750w	L747	-	102	(122)
2	TOPLIGHT	Source 4 26degree/TH	750w	L747	-	93	(124)

FOH 2 Low

UF	Purpose	Type & Accessories	Watts	Color	Template	Dim	Chan
1	FOH TEXTURE	Source 4 36degree/TH	750w	-	-	75	(255)
2	DSL FRONT	S4 PAR NSPwr-	575w	R04	-	73	(57)
3	DSL FRONT	S4 PAR NSPwr-	575w	R04	-	74	(53)
4	DSL FRONT	S4 PAR NSPwr-	575w	R04	-	71	(58)
5	DSL FRONT	S4 PAR NSPwr-	575w	R04	-	70	(51)
6	DSL FRONT	S4 PAR NSPwr-	575w	R04	-	69	(54)
7	DSL FRONT	S4 PAR NSPwr-	575w	R04	-	68	(58)
8	FOH TEXTURE	Source 4 36degree/TH	750w	-	-	66	(255)
9	DSL FRONT	S4 PAR NSPwr-	575w	R04	-	65	(55)
10	DSL FRONT	S4 PAR NSPwr-	575w	R04	-	62	(58)
11	FOH TEXTURE	Source 4 36degree/TH	750w	-	-	61	(255)
12	FOH TEXTURE	Source 4 36degree/TH	750w	-	-	58	(255)
13	FOH TEXTURE	Source 4 36degree/TH	750w	-	-	53	(255)
14	DSR TONE	Source 4 19degree/-	575w	Heat	-	51	(6)
14a	DMX 1115	M Faderw/-	-	-	-	-	(6)
15	DSR TONE	Source 4 19degree/-	575w	Heat	-	49	(2)
15a	DMX 1148	M Faderw/-	-	-	-	-	(2)
16	DSR TONE	Source 4 19degree/-	575w	Heat	-	48	(11)
16a	DMX 1103	M Faderw/-	-	-	-	-	(11)
17	DSR TONE	Source 4 19degree/-	575w	Heat	-	47	(3)
17a	DMX 1091	M Faderw/-	-	-	-	-	(3)

FOH 2 High

UF	Purpose	Type & Accessories	Watts	Color	Template	Dim	Chan
1	DSL FRONT	S4 PAR NSPwr-	575w	R04	-	72	(52)
2	DSR TONE	Source 4 19degree/-	575w	Heat	-	50	(1)
2a	DMX 1037	M Faderw/-	-	-	-	-	(1)

Instrument Schedule

The Ash Girl

INSTRUMENT SCHEDULE

Page 8
5/2/08

BALCONY RAIL

UM	Purpose	Type & Accessories	Watts	Color	Template	Dim	Chan
-	-	Doublers/-	-	-	-	1538	(504)
1	FOH TEXTURE	Source 4 36degr/TH	750w	R99	G629	158	(251)
2	FOH TEXTURE	Source 4 36degr/TH	750w	R99	G629	158	(251)
3	FOH TEXTURE	Source 4 36degr/TH	750w	R99	G629	159	(252)
4	FOH TEXTURE	Source 4 36degr/TH	750w	R99	G629	159	(252)
5	WALL TEXTURE	Source 4 19degr/TH	750w	NIC	G630	156	(209)
6	WALL TEXTURE	Source 4 19degr/TH	750w	NIC	G630	148	(205)
7	WALL TEXTURE	Source 4 19degr/TH	750w	NIC	G630	155	(206)
8	Spars	Source 4 19degr/TH	750w	NIC	-	267	
9	WALL TEXTURE	Source 4 19degr/TH	750w	NIC	G630	150	(207)
10	WALL TEXTURE	Source 4 19degr/TH	750w	NIC	G630	152	(208)
11	WALL TEXTURE	Source 4 19degr/TH	750w	NIC	G630	147	(204)
12	FOH TEXTURE	Source 4 36degr/TH	750w	R99	G629	145	(252)
13	FOH TEXTURE	Source 4 36degr/TH	750w	R99	G629	145	(252)
14	FOH TEXTURE	Source 4 36degr/TH	750w	R99	G629	144	(251)
15	FOH TEXTURE	Source 4 36degr/TH	750w	R99	G629	144	(251)

FOH 3 Low

UM	Purpose	Type & Accessories	Watts	Color	Template	Dim	Chan
-	Signer	Source 4 10deg	750w	R 33	-	28	(901)
1	FOH TEXTURE	Source 4 36degr/TH	750w	R99	G629	34	(253)
2	FOH TEXTURE	Source 4 36degr/TH	750w	R99	G629	33	(253)
3	HEARTH	Source 4 10degr/-	750w	-	-	31	(171)
4	FOH TEXTURE	Source 4 36degr/TH	575w	-	-	13	(256)
5	FOH TEXTURE	Source 4 36degr/TH	575w	-	-	17	(256)
6	FOH TEXTURE	Source 4 36degr/TH	575w	-	-	21	(256)
7	FOH TEXTURE	Source 4 36degr/TH	575w	-	-	26	(256)
8	FOH TEXTURE	Source 4 36degr/TH	750w	R99	G629	8	(253)
9	FOH TEXTURE	Source 4 36degr/TH	750w	R99	G629	7	(253)

HL BALC

UM	Purpose	Type & Accessories	Watts	Color	Template	Dim	Chan
1	TEXTURE SIDE	Source 4 28degr/TH	750w	R67	G674	143	(116)

Instrument Schedule

The Ash Girl

INSTRUMENT SCHEDULE

Page 9
5/2/08

FOH 4 HL Low

UF	Purpose	Type & Accessories	Watts	Color	Template	Dim	Chan
	OBJECT HIGHLIGHT	Source 4 5degree	575w	-	-	267	(233)
1	FOH TEXTURE	Source 4 35degree/TH	750w	R99	G629	3	(254)
2	FOH TEXTURE	Source 4 35degree/TH	750w	R99	G629	2	(254)
3	FOH TEXTURE	Source 4 35degree/TH	750w	R99	G629	1	(254)

FOH 4 HR Low

UF	Purpose	Type & Accessories	Watts	Color	Template	Dim	Chan
1	FOH TEXTURE	Source 4 35degree/TH	750w	R99	G629	40	(254)
2	FOH TEXTURE	Source 4 35degree/TH	750w	R99	G629	39	(254)
3	FOH TEXTURE	Source 4 35degree/TH	750w	R99	G629	38	(254)

HR BALC

UF	Purpose	Type & Accessories	Watts	Color	Template	Dim	Chan
1	TEXTURE SIDE	Source 4 25degree/TH	750w	R57	G674	160	(111)
2	-	Source 4 25degree/TH	750w	R52	Cloud	172	(263)
3	-	Source 4 25degree/TH	575w	R52	Cloud	161	(264)
4	-	Source 4 25degree/TH	575w	R52	Cloud	162	(265)

SR BOOM 1

UF	Purpose	Type & Accessories	Watts	Color	Template	Dim	Chan
1	TWINKLE SYSTEM	Source 4 25degree/TH	750w	NC	R55005	223	(92)
2	TWINKLE SYSTEM	Source 4 35degree/TH	750w	NC	G548	224	(91)
3	TWINKLE SYSTEM	Source 4 35degree/TH	750w	NC	G548	225	(90)
4	TEXTURE SIDE	Source 4 25degree/TH	750w	R57	G674	226	(117)
5	FADER SIDELIGHT	Source 4 25degree	575w	Heat	-	227	(107)
5a	DMX 1052	M Fader	-	-	-	-	(107)

Instrument Schedule

The Ash Girl

INSTRUMENT SCHEDULE

Page 10
5/2/08

SR BOOM 2

UF	Purpose	Type & Accessories	Watts	Color	Template	Dim	Chan
-		Source 4 36degw/TH	575w	R52	G764	164	(270)
-		Source 4 36degw/TH	575w	R52	G764	164	(270)
-		Source 4 36degw/TH	575w	R52	G764	245	(271)
1	TWINKLE SYSTEM	Source 4 26degw/TH	750w	NC	R55005	229	(96)
2	TWINKLE SYSTEM	Source 4 36degw/TH	750w	NC	G548	230	(94)
3	TWINKLE SYSTEM	Source 4 36degw/TH	750w	NC	G548	231	(93)
3	DSR TONE	Source 4 36degw/TH	575w	Heat	-	258	(22)
3a	DMX 1055	M Faderw/TH	-	-	-	-	(22)
4	TEXTURE SIDE	Source 4 26degw/TH	750w	R57	G674	232	(119)
5	FADER SIDELIGHT	Source 4 26degw/TH	575w	Heat	-	233	(108)
5a	DMX 1133	M Faderw/TH	-	-	-	-	(108)

SR BOOM 3

UF	Purpose	Type & Accessories	Watts	Color	Template	Dim	Chan
1	TWINKLE SYSTEM	Source 4 36degw/TH	750w	NC	G548	283	(97)
2	TWINKLE SYSTEM	Source 4 26degw/TH	750w	NC	R55005	284	(98)
3	TWINKLE SYSTEM	Source 4 50degw/TH	750w	NC	G548	285	(96)
4	WALL TREATMENT	Source 4 26degw/TH	575w	-	-	286	(203)
4a	DMX 1319	M Faderw/TH	-	-	-	-	(203)
5	TEXTURE SIDE	Source 4 26degw/TH	750w	R57	G674	287	(120)
6	US RUNWAY	Source 4 36degw/TH	750w	R305	G674	288	(219)
7	TEXTURE SIDE	Source 4 26degw/TH	750w	R57	G674	289	(119)
8	FADER SIDELIGHT	Source 4 26degw/TH	575w	Heat	-	286	(109)
8a	DMX 1034	M Faderw/TH	-	-	-	-	(109)

Instrument Schedule

The Ash Girl

INSTRUMENT SCHEDULE

Page 11
5/2/08

SL BOOM 2

UF	Purpose	Type & Accessories	Watts	Color	Template	Dim	Chan
	WALL SLASHES	S4 PAR NSPar-	575w	N/C	-	310	(302)
	TWINKLE SYSTEM	Source 4 36degel-	750w	-	R55005	301	(98)
1	TWINKLE SYSTEM	Source 4 26degel-	750w	N/C	R55005	295	(88)
2	TWINKLE SYSTEM	Source 4 36degel-	750w	N/C	G848	296	(88)
3	WALL TREATMENT	Source 4 36degel-	575w	-	-	298	(202)
3a	DMX 1028	M Faderel-	-	-	-	-	(202)
4	WALL TREATMENT	Source 4 50degel-	575w	-	-	297	(201)
4a	DMX 1040	M Faderel-	-	-	-	-	(201)
5	TWINKLE SYSTEM	Source 4 50degel-	750w	N/C	G848	299	(87)
6	TEXTURE SIDE	Source 4 26degel-	750w	R57	G874	300	(115)
7	FADER SIDELIGHT	Source 4 26degel-	575w	Heat	-	401	(105)
7a	DMX 1130	M Faderel-	-	-	-	-	(105)

SL BOOM 3

UF	Purpose	Type & Accessories	Watts	Color	Template	Dim	Chan
1	TEXTURE SIDE	Source 4 26degel/TH	750w	R57	G874	402	(114)
2	FADER SIDELIGHT	Source 4 26degel-	575w	Heat	-	403	(104)
2a	DMX 1345	M Faderel-	-	-	-	-	(104)

SR PROSC.

UF	Purpose	Type & Accessories	Watts	Color	Template	Dim	Chan
2	DSR TONE	Source 4 36degel-	575w	Heat	-	357	(23)
2a	DMX 1085	M Faderel-	-	-	-	-	(23)
3	OBJECT HIGHLIGHT	Source 4 19degel/TH	750w	N/C	-	360	(222)
4	OBJECT HIGHLIGHT	Source 4 19degel/TH	750w	N/C	-	364	(224)
5	OBJECT HIGHLIGHT	Source 4 19degel/TH	750w	N/C	-	363	(227)

SL PROSC.

UF	Purpose	Type & Accessories	Watts	Color	Template	Dim	Chan
1	WINDOW SLASH	Source 4 19degel/TH	750w	N/C	-	364	(228)
2	OBJECT HIGHLIGHT	Source 4 19degel/TH	750w	N/C	-	361	(225)
3	Cut	Source 4 19degel/TH	750w	N/C	-	-	(226)
4	OBJECT HIGHLIGHT	Source 4 19degel/TH	750w	N/C	-	360	(221)
5	OBJECT HIGHLIGHT	Source 4 19degel/TH	750w	N/C	-	359	(221)

Instrument Schedule

The Ash Girl

INSTRUMENT SCHEDULE

Page 12
5/2/08

SL LADDER 1

UF	Purpose	Type & Accessories	Watts	Color	Template	Dim	Chan
	Puppet Ent	Source 4 36degal-	575w	R03	-	392	(290)
1	SUNLIGHT SIDE	Source 4 26degal-	750w	R87	G878	393	(144)
2	SUNLIGHT SIDE	Source 4 26degal-	750w	R87	G878	394	(143)

BOOM 4 SL

UF	Purpose	Type & Accessories	Watts	Color	Template	Dim	Chan
1	US RUNNY	Source 4 26degal/TH	750w	R305	G874	404	(218)

SR LADDER 1

UF	Purpose	Type & Accessories	Watts	Color	Template	Dim	Chan
	WALL SLASHES	Source 4 26degal-	575w	NIC	-	275	(303)
1	FADER SIDELIGHT	Source 4 26degal-	575w	Heat	-	388	(110)
1a	DMX 1121	M Faderal-	-	-	-	-	(110)

SL Slot

UF	Purpose	Type & Accessories	Watts	Color	Template	Dim	Chan
1	-	Source 4 36degal/TH	575w	R80	Jagged Breakup	173	(281)

SR Slot

UF	Purpose	Type & Accessories	Watts	Color	Template	Dim	Chan
1	-	Source 4 36degal-	575w	R80	Jagged Breakup	185	(262)

3rd Elec.

UF	Purpose	Type & Accessories	Watts	Color	Template	Dim	Chan
	Spars	-w/TH	-	-	-	-	-
	Spars	-w/TH	-	-	-	-	-
3a	-	Gobo Rotatoral-	-	-	-	-	(230)

Upr Tech Box HL Top

UF	Purpose	Type & Accessories	Watts	Color	Template	Dim	Chan
1	SPOTLIGHT	Source 4 19degal-	750w	BOOME RANG	G 216	83	(242)
2	DSR TONE	Source 4 19degal-	575w	Heat	-	113	(14)
2a	DMX 1097	M Faderal-	-	-	-	-	(14)
3	DSR TONE	Source 4 19degal-	575w	Heat	-	117	(12)
3a	DMX 1088	M Faderal-	-	-	-	-	(12)
4	DSR TONE	Source 4 19degal-	575w	Heat	-	120	(4)
4a	DMX 1025	M Faderal-	-	-	-	-	(4)

UMD Department of Theatre / Lightwright 4

SL LADDER 1 thru Upr Tech Box HL Top

Instrument Schedule

The Ash Girl

INSTRUMENT SCHEDULE

Page 13
5/2/08

Lwr Tech Box HL Top

U#	Purpose	Type & Accessories	Watts	Color	Template	Dim	Chan
1	DSR TONE	Source 4 19depe/-	575w	Heat	-	81	(8)
2	DSR TONE	Source 4 19depe/-	575w	Heat	-	82	(16)
2a	DMX 1145	M Fader/-/TH	-	-	-	-	(8)
2a	DMX 1031	M Fader/-	-	-	-	-	(16)

Upr Tech Box HL Bot

U#	Purpose	Type & Accessories	Watts	Color	Template	Dim	Chan
1	DSR TONE	Source 4 19depe/-	575w	Heat	-	119	(7)
1a	DMX 1339	M Fader/-	-	-	-	-	(7)
2	DSR TONE	Source 4 19depe/-	575w	Heat	-	114	(13)
2a	DMX 1046	M Fader/-	-	-	-	-	(13)
3	DSR TONE	Source 4 19depe/-	575w	Heat	-	115	(12)
3a	DMX 1316	M Fader/-	-	-	-	-	(12)
4	DSR TONE	Source 4 19depe/-	575w	Heat	-	83	(9)
4a	DMX 1061	M Fader/-	-	-	-	-	(9)
5	DSR TONE	Source 4 19depe/-	575w	Heat	-	118	(8)
5a	DMX 1338	M Fader/-	-	-	-	-	(8)

SL BOOM 1

U#	Purpose	Type & Accessories	Watts	Color	Template	Dim	Chan
1	TWINKLE SYSTEM	Source 4 26depe/TH	750w	N/C	R55005	395	(83)
1	Spare	Source 4 26depe/TH	750w	N/C	-	396	(86)
2	TWINKLE SYSTEM	Source 4 26depe/TH	750w	N/C	G548	397	(82)
3	TWINKLE SYSTEM	Source 4 26depe/TH	750w	N/C	G548	398	(85)
5	TWINKLE SYSTEM	Source 4 26depe/TH	750w	N/C	G548	399	(81)
6	TWINKLE SYSTEM	Source 4 26depe/TH	750w	N/C	G548	400	(84)
7	SUNLIGHT SIDE	Source 4 26depe/TH	750w	R87	G676	289	(141)
8	SUNLIGHT SIDE	Source 4 26depe/TH	750w	R87	G676	290	(142)
9	TEXTURE SIDE	Source 4 26depe/TH	750w	R57	G674	291	(112)
10	TEXTURE SIDE	Source 4 26depe/TH	750w	R57	G674	292	(113)
11	FADER SIDELIGHT	Source 4 26depe/-	575w	Heat	-	293	(102)
11a	DMX 1127	M Fader/-	-	-	-	-	(102)
12	FADER SIDELIGHT	Source 4 26depe/-	575w	Heat	-	294	(103)
12a	DMX 1154	M Fader/-	-	-	-	-	(103)

Upr Tech Box HR Top

U#	Purpose	Type & Accessories	Watts	Color	Template	Dim	Chan
1	SPOTLIGHT	Source 4 19depe/-	750w	BOCME G 216 RANG	-	124	(241)

UMD Department of Theatre / Lightwright 4

Lwr Tech Box HL Top thru Upr Tech Box HR Top

Instrument Schedule

The Ash Girl

INSTRUMENT SCHEDULE

Page 14
5/2/08

Grid

U#	Purpose	Type & Accessories	Watts	Color	Template	Dim	Chan
	NO Power for 1E and 3E	-el-		-	-	348	(500)

Midrail SL

U#	Purpose	Type & Accessories	Watts	Color	Template	Dim	Chan
	Haze	Unique/el-		-	-	1525	(502)
	Haze	Unique Hazer/el-		-	-	1526	(503)

Midrail SR

U#	Purpose	Type & Accessories	Watts	Color	Template	Dim	Chan
	Haze	DF-50/el-		-	-	468	(501)

Appendix D: Production Photographs



Sadness and Ashgirl.



The forest.



The forest.



The Palace.

Appendix D: Production Photographs



The forest.



The forest.



Sadness and Ashgirl



The Fairy enters.

Appendix D: Production Photographs



Ashgirl transforms.



Puppets appear.



The palace and the house.



The forest.

Appendix D: Production Photographs



Wicked stepmother and sisters.



Ashgirl consumed by sins.



Final moment.



Gluttonoad.

Appendix D: Production Photographs



Dragon puppet.



Ashgirl.

Bibliography

Andera, Margaret. *Magnetic north : the landscapes of Tom Uttech*. Milwaukee, WI : Milwaukee Art Museum, 2004.

Dr. Seuss. *The Secret Art of Dr. Seuss*. New York: Random House Inc., 1995.

Fabian Miller, Garry. *Illumine : photographs : a retrospective*. New York: Merrell, 2005.

Garcia, Camille Rose. *The saddest place on Earth : the art of Camille Rose Garcia*. San Francisco: Last Gasp, 2005.

Hammacher, Abraham Marie. *Phantoms of the imagination : fantasy in art and literature from Blake to Dali*. New York: H. N. Abrams, 1981.

Hauptman, Jodi. *Beyond the visible : the art of Odilon Redon*. New York: Museum of Modern Art, 2005

Mancini, Andrea. *Casa di fiori, Casa di stelle. House of flowers, House of stars*. Italy: Fondazione Aida, 2004.

Merkel, Klaus. *The reading of time in the text of nature : images and insights*. Switzerland: Lars Muller Publishers, 2000.

Prigann, Herman. *Ecological Aesthetics: Art in Environmental Design: Theory and Practic*. Boston: Birkhauser, 2004.

Redon, Odilon. *Odilon Redon : la natura dell'invisibile*. Milan: Skira, 1996.

Redon, Odilon. *Odilon Redon : prince of dreams, 1840-1916*. Chicago: Art Institute of Chicago, 1994.

Standen, Amy. *Maggie Taylor's Landscape of Dreams*. Berkeley Ca.: Peachpit, 2005.

Venosa, Bob. *Robert Venosa : illuminatus*. S.I.: Interface, 1999.

Zafran, Eric. *Fantasy and faith : the art of Gustave Doré*. New York: Yale University Press, 2007.

Corbis online visual image database. <http://pro.corbis.com/>

Borough, Stan. Production photos.