



**Making Consortial Resource
Sharing a Reality: ILLiad and
Resource Sharing in the
University System of Maryland
and Affiliated Institutions
Consortium of Libraries
(<http://usmai.umd.edu/>)**

Tanner Wray, Jamie Bush, Robin Moskal,
& Carol Vaeth



Panelists

- Tanner Wray – Director of Public Services, UM College Park (UMC)
- Robin Moskal – Head of Collection Management/Interlibrary Loan & Accounting & Receiving, UM Baltimore County (MUB)
- Carol Vaeth – ILL Coordinator, University of Baltimore (BAL)
- Jamie Bush – Integrated Library System Manager, USMAI Information Technology Division (ITD)



Overview of Talk

- USMAI Library Consortium
- ILLiad Implementation Background
- Mechanics of Implementing ILLiad for 8 Campuses
- Technical Issues
- Wrap Up



**The University System of
Maryland and Affiliated
Institutions Consortium of
Libraries (USMAI)
(<http://usmai.umd.edu/>)**



USMAI Consortium

- University System of Maryland and Affiliated Institutions
 - 14 Colleges and Universities of the University System of Maryland
 - St. Mary's College of Maryland and Morgan State University
- Serves Over 140,000 Students in Maryland and Beyond



USMAI Institutions

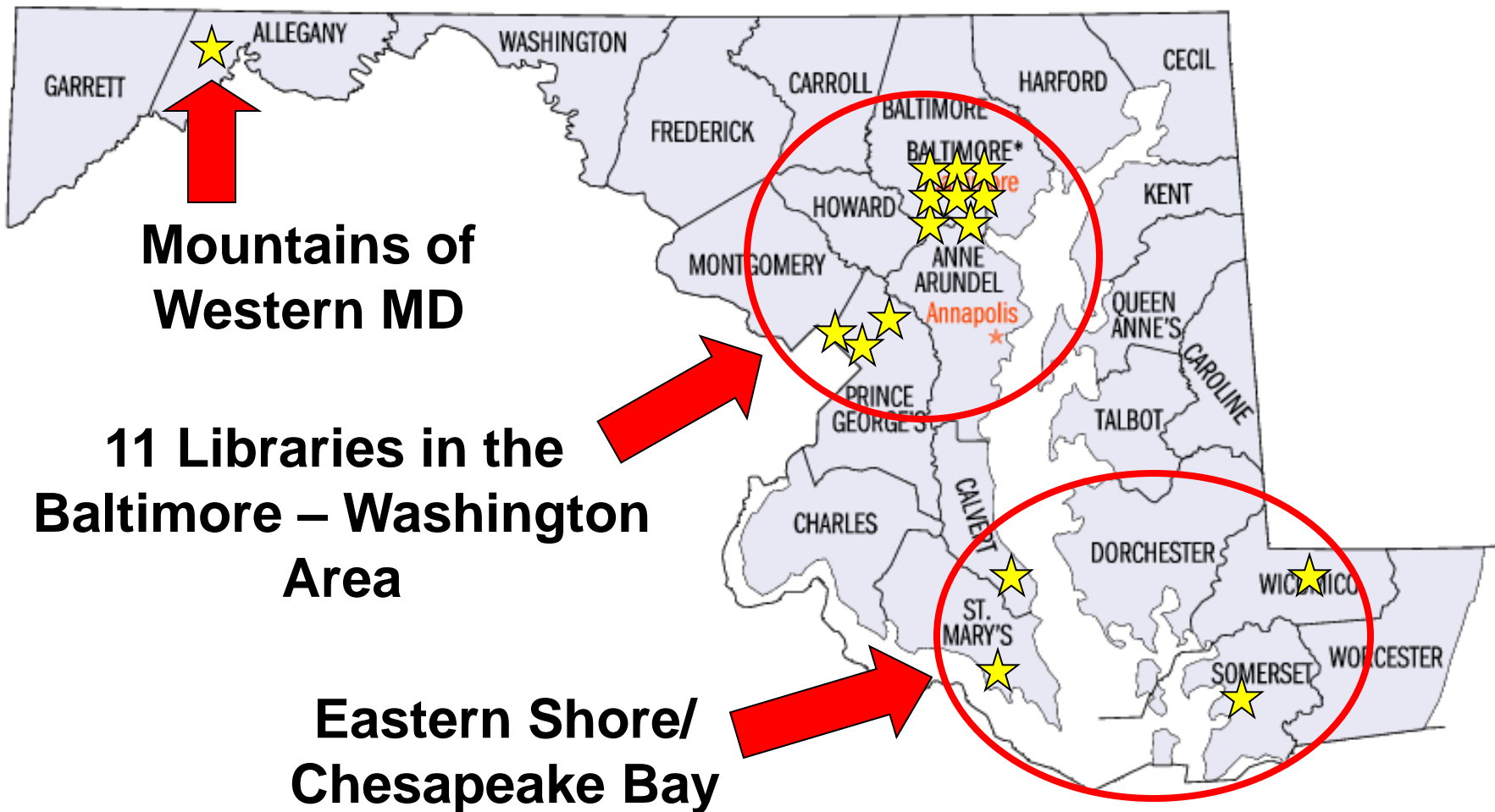


USMAI





USMAI Institution Locations





USMAI Library Consortium

- Founded in the Late 1990s
- Shared Integrated Library System (ExLibris' ALEPH)
- Global Catalog with a Shared Bibliographic Records
- Patron Placed Holds (PPH) Service
- Metasearching and Linking Capabilities through MetaLib and SFX
- Consortial Implementation of ILLiad



ILLiad Project Background



About the Project – Why ILLiad?

- In 2005
 - 8 USMAI Libraries Had ILLiad
 - 8 USMAI Libraries Lacked ILLiad
- *ILLiad Includes Integrated Electronic Article Delivery Services*
- Opportunity to Create Level Playing Field



Why ILLiad for USMAI?

- *Desktop Article Delivery*
- Odyssey – For Intercampus Article Delivery
- Patron Self Service
 - 24/7 Access
 - Request Tracking → Fewer Calls to ILL Office
 - Request History
 - Confidentiality: Can Break Patron—Request Links
- Compatible with MetaLib & SFX Used by USMAI
- Auto-generated Patron Emails
- Web-based Management Statistics
- Simple One-time Patron Registration
- Staff Efficiencies
- Works with Major ILL Service Providers
- Handles Billing Processes



Resource Sharing Model

- ALEPH PPH Used to Move Books Among USMAI
- ILLiad/Odyssey/ARIEL Used to Move Articles Among USMAI
- ILLiad/Odyssey/ARIEL Used for Out-of-consortium Resource Sharing



USMAI ILLiad Sites

Standalone Sites

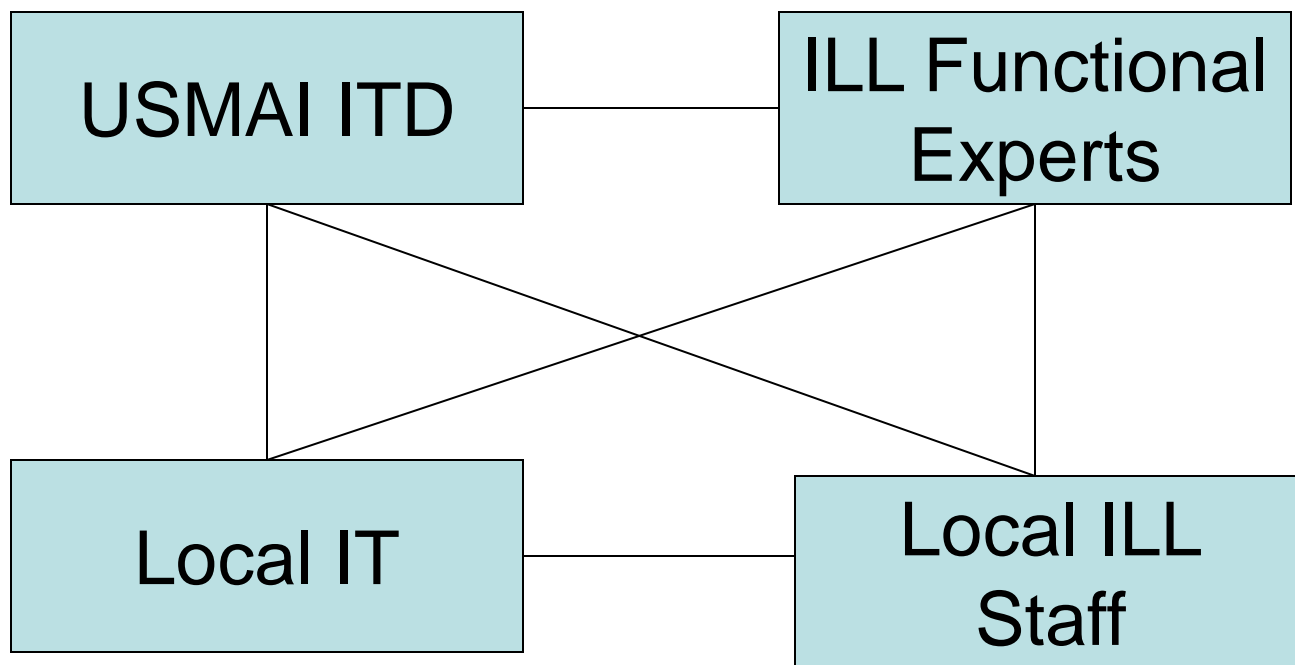
- Towson University
- University of Baltimore
- University of Baltimore Law Library
- UM Health Sciences and Human Services Library
- UM Baltimore County
- UM College Park
- UM Law Library
- UM University College

Shared Sites

- Bowie State University
- Center for Environmental Science
- Coppin State University
- Frostburg State University
- Morgan State University
- Salisbury University
- St. Mary's College of Maryland
- UM Eastern Shore



Collaborative Implementation





Getting Organized for Implementation



Implementation Model

- ILLiad Implementation for 8 Libraries without ILLiad
 - Centralized Training
 - Centralized ITD Support and OCLC Contact
 - Shared, Locally Hosted Server at ITD
 - Centralized Financial Support
 - Standard Look and Feel/Implementation
 - Authentication Against Existing Library Patron Database Used by All Campuses
- 8 Sites Already on ILLiad Maintain Separate Installations for Now



Implementation Team

- Initial Team: 3 RSTG Members + 3 More
 - 4 from Standalone ILLiad Sites
 - 1 from ITD
 - 1 from Satellite Site
- Final Team
 - 2 from Standalone ILLiad Sites
 - 1 from ITD
- Buddies



Information Gathering

- Surveys
 - Workstation Hardware/Software
 - ILL Volume and Staffing
 - Campus IT Cooperation
- Customization Manager Spreadsheet
- Equipment Needed



ILLiad Workstations Survey

Please answer the questions below and if you cannot answer the questions, refer them to the appropriate person. If you have any questions, please use the ILUG email reflector.

- How many workstations do you plan to have set up with ILLiad?
- Of the number stated above, how many of these workstations will be set up with both ILLiad and ALEPH? (circulation)
- Please supply the IP address for each workstation and identify them as ILLiad or both ILLiad/ALEPH
- Where will each workstation be located and identify them as ILLiad or both ILLiad/ALEPH? (Room number)
- Of the number of workstations stated in question 1, how many will be set up with ARIEL, and indicate if it will be on an ILLiad or an ILLiad/ALEPH workstation? (include room number)
- Please indicate if you are currently running a VPN client (networking) on these workstations and identify which one(s). If you cannot answer this question, please ask your IT support person.



Pre-Implementation

- Annual USMAI ILL Meeting
 - Consortial ILL Agreements
 - Buddies
 - ILL Staff Contacts Lists
- Atlas Training
 - Multiple Campus Training
 - Community Building and Networking
- Communication
 - Regular Email & Phone Communication
 - ILUG Reflector



Bringing Up the Test Site

- ITD Tested ILLiad Environment
- Delivered Client to 1st Satellite Site
- Broad Training Plan Developed

- ITD & Local Library IT Configured System
- Trainers Began with Customization Manager
- Staff Trained in Functionality
- Day's Events Documented



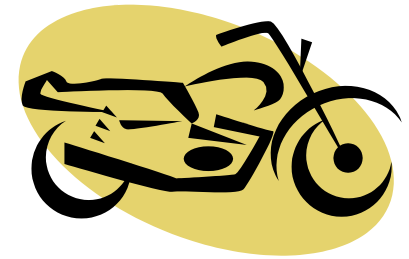
Planning Subsequent Implementations

- Reinforced What was Needed as Core Equipment and Software
 - Reminders Lists and Communication
- Revamp Implementation Plan
- ITD Downloads
- Training Outline
- Logistics



And So the Implementation Began...

- On the Road
- Implementation Team
- Training Plan
 - Customization Manager
 - Test Requests





Each Site Visit Was Different

- Equipment
 - ARIEL Problems
 - Scanners not Connected, etc.
 - Word Docs
- IT
 - Local IT
 - Desktop Configurations and Software
 - Firewalls
 - Network Problems



Each Site Visit Was Different – pt. 2

- Training the Staff
 - Trepidation and Excitement
 - Problems, Problems, Problems



Post Visit Support

- Supporting New Sites
 - Consortial Tips and Tricks Manual
 - Trouble-shooting and Continuing Support
 - Rx System
 - Access to Consortial ILLiad Outside ITD
 - Atlas On-line Training for Borrowing
 - Annual ILL Meeting



Things We've Learned

- Training Team
 - Who Will Travel?
 - Who Will Pay?
- Teaching Outline for Consistent Training
- Take Notes!
- Impact Elsewhere
- Be Kind to Your Trainers!



Technical Issues



Technical Issues

- ITD Team
- Remote Installations
- Specific Issues - VPN, Shibboleth, etc.
- Technical Support



ITD Implementation Team

- Systems Librarian
 - 1st Level
- Programmer
 - Applications (ILLiad, Odyssey)
 - Shibboleth
- Network Administrator
 - VPN
 - System Administration
 - Networking Support



Remote Sites

- Pre-visit Work
 - Install VPN Client
 - Install Applications
 - Web Environment Setup
- Site Visit
 - Verify Install
 - Minor Customization in Web
 - Borrower Types
 - Request Types

Main Menu of ILLiad for Lea Messman

Status: Choose an option from the choices below.

Request Types

Request a Photocopy

Use this button to request a photocopy of an article within a larger work, or to request a journal, a paper within a conference proceedings, or a single chapter within an article.

Request a Book

Use this button to request the loan of an entire work. Examples include books, entire microfilm reels and microfiche.

Request a Thesis or Dissertation

This will request a thesis or dissertation.

Review Requests

View/Modify Outstanding Requests

Use this button to view and edit your outstanding requests, including detailed request information.

View/Download Electronically Received Articles

Use this button to view items that you have received for web delivery.

View/Renew Checked Out Items

Use this button to view items that you have checked out along with due dates and a list of items that are available for renewal.

View Request History

Use this button to view your completed requests.

Use this button to view items that have been cancelled either by you or the InterLibrary Loan Department.

Done

Start



RxWeb - Windows Inter...

ILLiad Main Menu - Wi...

rx1.doc - Microsoft Word

Local Disk (C:)

Microsoft PowerPoint - [...]

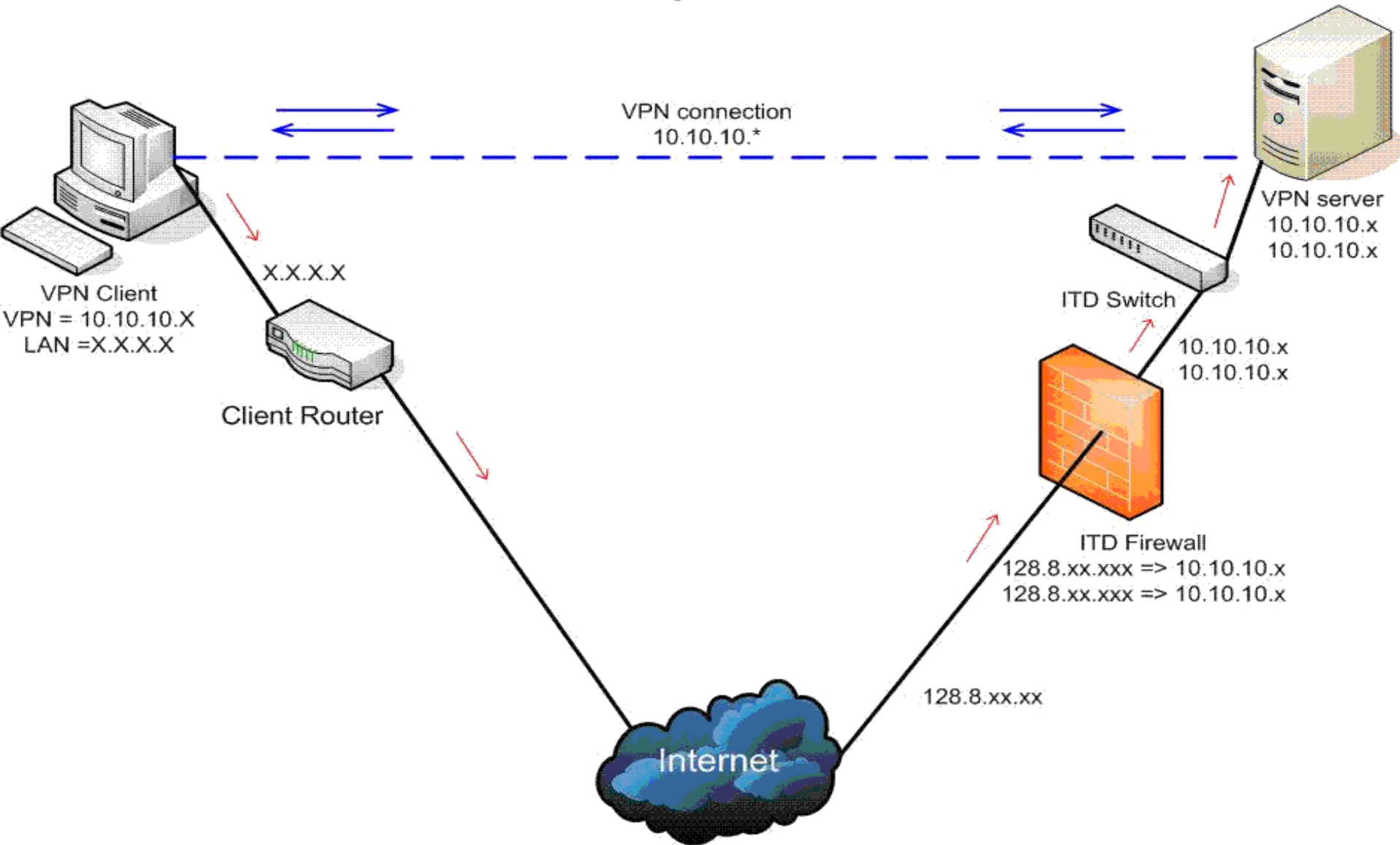
ALEPH Circ



Virtual Private Network (VPN)

- Allows Access Through Campus Firewalls
- Customized USMAI VPN
 - Only Routes ILLiad/Odyssey Traffic
 - Ease of Setup to Avoid User Having System Administrator Account
 - Needed to be “Plug and Play”
 - Secure

VPN Configuration Diagram





Shibboleth

- Provides Authentication Across Library Applications
 - Single Login
 - Supplies Users Attributes
 - Already in Place for Access to Databases (MetaLib)
- Programmer and Atlas Worked Closely Together



SFX and OpenURL

- SFX Passes Citation to ILLiad
- “Find It” Menu is Conditional Based on Format of Item

catalogusmai

[basic search](#) | [advanced search](#) | [multi-campus search](#) | [recent searches](#) | [basket](#) | [results](#) | [preferences](#)

[CATALOG](#) | [JOURNALS](#) | [COURSE RESERVES](#) | [choose campus](#)

▶ You are here: [Catalog - University of Maryland, College Park](#) | [library home](#)

! A maximum of 5000 records can be displayed and sorted.

Results for Words= boston;

Sorted by: Year, then Author Sort options: [Year/Author](#) [Author/Year](#) [Title/Year](#) [Format/Author](#)

Records 1 - 10 of 73067

1 [Intercultural communication in the global workplace / Linda Beamer, Iris Varner.](#)

Source: Experiencing nature : [0-7923-4477-4] Debus yr: 1997

Is it online? No electronic full text available for this item via Find It.

Is it in the library? Check availability at all USMAI campuses GO

How can I get it from another library? Request item from another USMAI campus GO Use only if item cannot be checked out from your home campus.

Reviews, save/email, and help

Source: Brain research [0006-8993]

Is it online? No electronic full text available for this item via Find It.

Is it in the library? Check availability at all USMAI campuses GO

How can I get it from another library? Request a document via Interlibrary Loan (ILL) GO Use ONLY if item cannot be requested from a USMAI campus.

Reviews, save/email, and help



USMAI Technical Support

- Diversity In Experience and Resources
 - Have's vs. Have Not's
 - Technology and Human Resources
- Determining Factors
 - Organization Structure of Library
 - Size of ILL Staff
 - Internal and External IT Support



USMAI Technical Support

- ITD ILLiad Support Model
 - USMAI Sites Report Problems to ITD
 - ITD Communicates with OCLC Support
- Rx System
 - Web Based Reporting and Tracking Tool Used for ILS and ILLiad
 - Reports Distributed to Email Reflectors
 - Users Reply Using Rx Forms

RxWeb Form **RxWeb** RxWeb Statistics

Select one of the following to filter reports.

- Acquisitions
- Circulation
- Cataloging
- Item Maintenance
- Reserves
- ILL
- Serials
- Web OPAC
- Technical
- New
- Pending
- Active
- Change Request
- Closed
- Report Requests
- All Summaries

FILTER = ILL

SORT = ID

ORDER = Descending

[Learn more about RxWeb](#)

[USMAI Alerts](#)

* Indicates an ITD response has been made. Go to report # : GO

Basic Search

Next Page >

Last Page >>

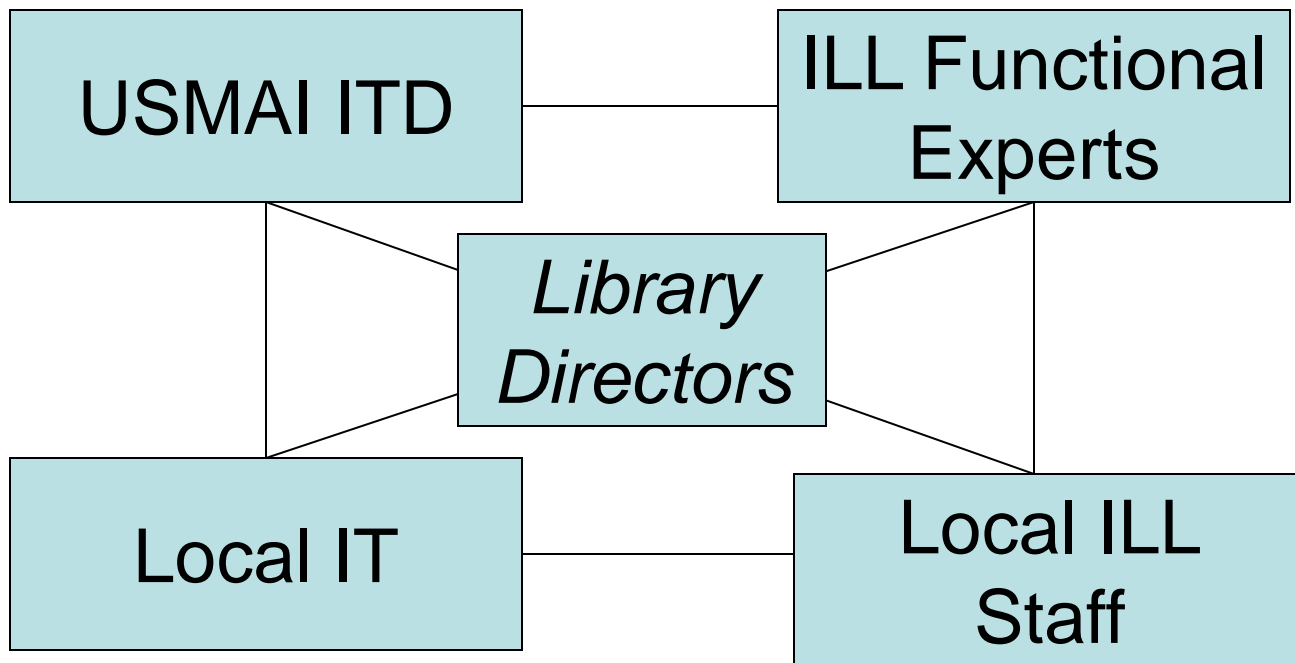
ID	Summary	Functional Area	Name	Campus	Status	Date	Replies
* # 2692	E-mail from Illiad not working	ILL	Kathy Heil	CES	user input needed	02/28/07	10
* # 2654	ILLIAD Email delivery failure	ILL	Kathy Showalter	FSU	closed	02/16/07	
* # 2634	Odyssey	ILL	Sharon Payne	SU	pending	02/07/07	4
# 2626	Admin Report IFM	ILL	Kathy	CES	new	02/06/07	1
* # 2619	Statistics	ILL	Kathy Heil	CES	closed	02/05/07	
* # 2595	Odyssey problem	ILL	Sharon Payne	SU	pending	01/24/07	3
* # 2555	Shibboleth Error	ILL	Celia Rabinowitz	SMCM	pending	01/10/07	1
* # 2486	VPN disconnecting	ILL	Brenda Rodgers	SMCM	closed	12/06/06	2
* # 2465	It's back - TN6122	ILL	Kathy Heil	CES	closed	11/29/06	7
* # 2459	need TN deleted	ILL	Kathy Heil	CES	closed	11/28/06	2
* # 2455	Unable to access ILLiad web reports	ILL	Robernette Smith	CSC	closed	11/22/06	
* # 2452	Change name	ILL	Kathy Heil	CES	closed	11/21/06	



Wrap Up



What Would We Do Differently?





Implementation Team Considerations

- Impact at Sites Managing Implementation
 - Staff Are Busy or Away Supporting Other Campuses
 - Potential Patron Service Impact
- Travel Support
- Implementation Team



Future & Next Steps

- Communication, Communication, Communication
- Help Last Site Come Up Fully
- Expand Odyssey to All 16 Sites
- Support Libraries in Improving Work Processes
- Plan for Version 7.2 Upgrade
- As Needed, USMAI Members Develop Documentation

- Improve Workflows Between Systems (PPH \leftrightarrow ILLiad)
- Improve Resource Sharing Systems Messaging at Critical Junctures
- Explore Other Resource Sharing Opportunities in State
- Future Relationship of Standalones and Satellites?



Contacts

Tanner Wray - UMC

twray@umd.edu

<http://www.lib.umd.edu/>

Robin Moskal - MUB

moskal@umbc.edu

<http://www.umbc.edu/aok/main/index.html>

Jamie Bush - USMAI

gjbush@umd.edu

<http://usmai.umd.edu/itd/>

Carol Vaeth - BAL

cvaeth@ubalt.edu

<http://langsdale.ubalt.edu/>

Resource Sharing Task Group
(RSTG) Website:

<http://usmai.umd.edu/resshare/>



Questions?



Making Consortial Resource Sharing a Reality: ILLiad and Resource Sharing in the University System of Maryland and Affiliated Institutions Consortium of Libraries (<http://usmai.umd.edu/>)

Copyright Tanner Wray, Jamie Bush, Robin Moskal, & Carol Vaeth, 2007. This work is the intellectual property of the authors. Permission is granted for this material to be shared for non-commercial, educational purposes, provided that this copyright statement appears on the reproduced materials and notice is given that the copying is by permission of the authors. To disseminate otherwise or to republish requires written permission from the authors.